



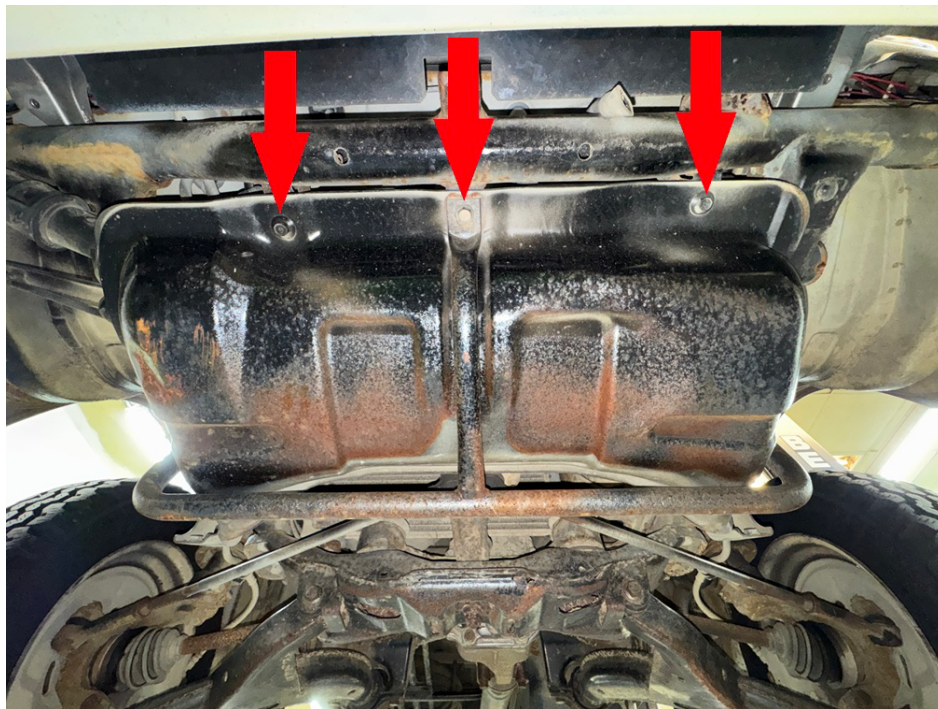
Skid plate installation guide
Professional installation is recommended

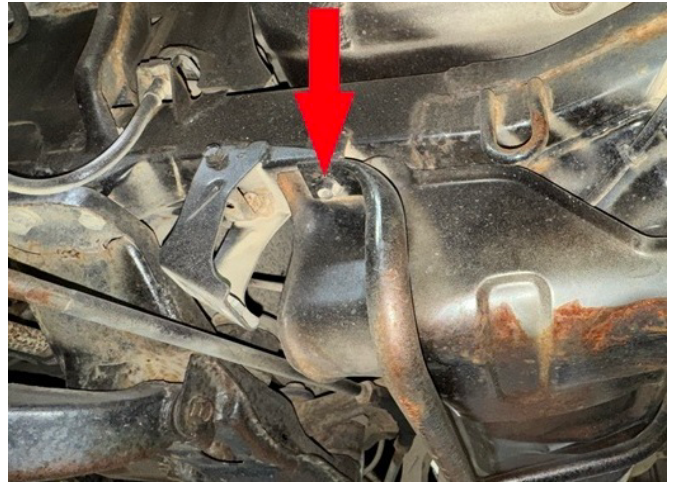
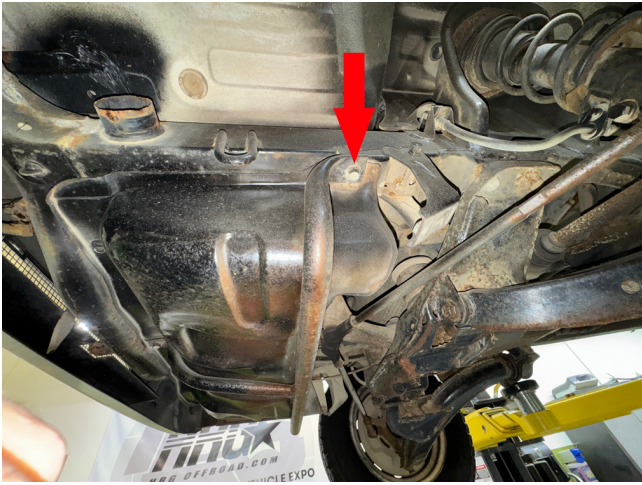
Included in the kit:

- 4 M10 "T" bolts
- 4 M10 nuts
- 1 Skid plate
- 1 Fish wire

Step 1. Lift vehicle and support with jack stands.

Step 2. Remove existing splash guard and bars.





Step 3. Wrap about 4-5 inches of the fish wire around a 1/4-inch socket extension or an ordinary pen in a counterclockwise direction.

Step 4. Pass fish wire through the holes in the bar behind the front bumper, coiled end first. Push the coiled end of the wire out through the side of the bar.



Step 5. Thread one T bolt into the wire and pull through the hole.



Step 6. Repeat this process for the other bolt.

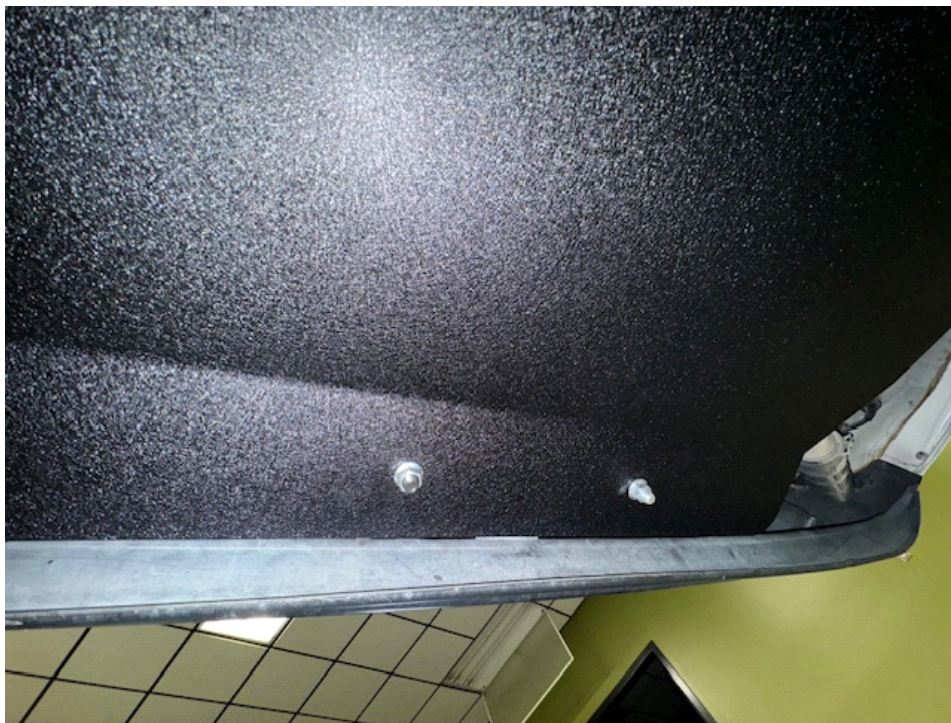
Step 7. Carefully line up holes in skid plate with T-bolts so they pass through. Loosely thread 2 M10 nuts onto the bolts, supporting skid plate.

NOTE: If the bolts get pushed back into the bar, use an air gun to blow them out the opposite end. Then repeat steps 4-6.

Step 8. Drop remaining 2 T bolts through slots on bottom of subframe.



Step 9. Line up holes in skid plate with T bolts so they pass through. Thread on 2 M10 nuts onto the bolts.



Step 10. Tighten all nuts, torque to 40 ft-lb.

Step 11. Find some trails!!

**For tech support, please call 1-844- HRG LIFT (474-5438) from 8-4:30 PM EST
Mon-Thu 8-3:30 PM Fri or email us 24/7 at support@hrgoffroad.com.**

Copyright HRG Offroad 2026