



1999-09 Acty 1.5" (38mm) lift kit installation guide

Professional installation is recommended

IMPORTANT!

Lifting and modifying the suspension on your vehicle may result in drive line vibrations, damaged bushings, erratic handling characteristics, and shortened suspension component life. HRG Off-road recommends the following:

- Checking and/or replacing worn drive axles with new parts, not remanufactured.
- Checking and/or replacing all worn factory rubber bushings with urethane bushings, such as Prothane.
- Checking and/or replacing worn shock absorbers and bump stops.
- Performing a 4-wheel alignment after working on suspension components.

Lift kits may not be legal for use on public highways in your area. Please check local laws before installing!

WARNING!

Lifted vehicles are more prone to rolling over.

Some HRG Offroad products are designed to improve off-road capabilities. Modifying the suspension of your vehicle may result in handling characteristics that are different from a factory equipped vehicle. Extreme care must be used to prevent a rollover or loss of control. Always operate your modified vehicle at a reduced speed to ensure your ability to maintain control under all driving conditions. Driving your vehicle in an unsafe manner may result in serious injury or death. HRG Offroad lift kits are designed and tested to work together. HRG Offroad does not recommend combining this lift kit with any other type of suspension or body lift. Always wear your seat belt.

Recommended tire/wheel sizes:

Stock: 145/80R12 (21.1")

+2" 23x8.0R12 (23")**

13 inch wheels:

+0.5" 155/70R13 (21.5")

+1" 175/65R13 (22")

+1.6" 175/70R13 (22.6")

+2.3" 165/80R13 (23.4")**

14 inch wheels:

+1" 185/55R14 (22")

+1.4" 215/50R14 (22.5")

+1.6" 185/60R14 (22.7")

+2" 175/65R14 (23")**

15 inch wheels:

+1" 165/55R15 (22.1)

**May require fender modification

Be sure to check fitment prior to installation! These sizes are only suggestions. HRG is not responsible for improperly fitted wheels/tires!

Included in the kit:

- 2 1.5" (38mm) offset lift spacers (1 Left, 1 Right)
- 2 1.5" rear spring blocks
- 2 1.5" rear shock extensions
- 4 U bolts (rear lift blocks)
- 2 M10x50 bolts (rear shock extensions)
- 6 M10 nuts (front spacers)
- 2 M10 nuts (rear shock extensions)

Approximate installation time: 1.5-3 hours

Skill level: MODERATE

Front installation:

Parts required: 2 front spacers, 6 nuts

Tools required: Floor jack, Impact gun/19mm socket, 3/8" ratchet, 14mm socket, 12mm socket, 14mm wrenches, heavy hammer, torque wrench.

Step 1. Remove 3 14mm nuts holding passenger side strut to shock tower. (located underneath the dash)

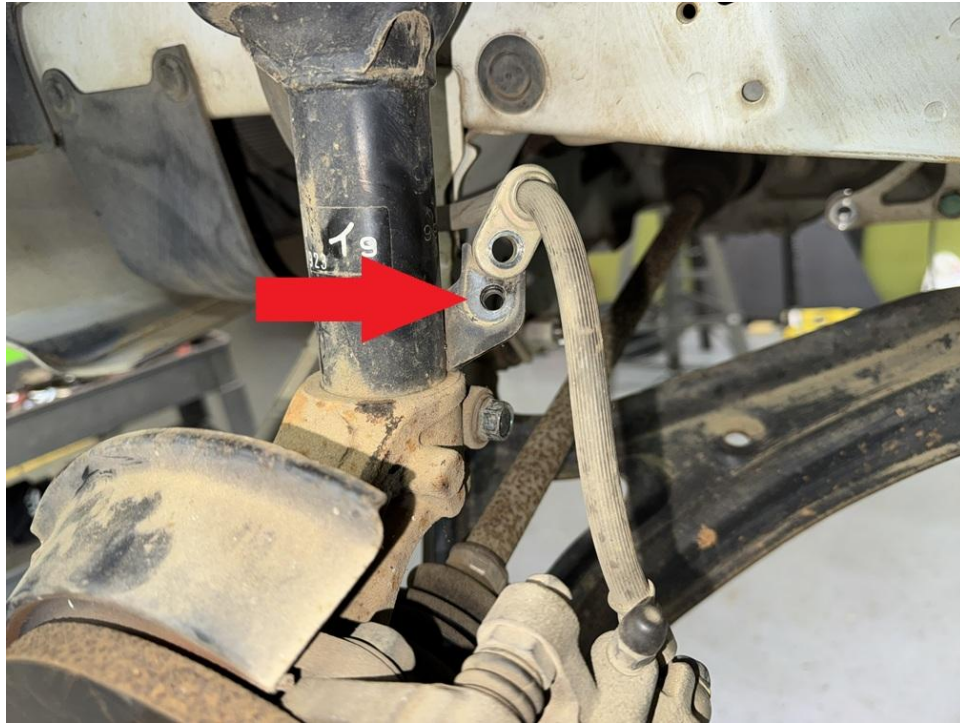


Step 5. Repeat on driver side.

Step 8. Lift vehicle and support with jack stands.

Step 9. Remove front wheels.

Step 10. Remove 12mm bolt holding brake lines to driver side (RIGHT) strut.



Step 11. Remove 14mm bolt holding strut to knuckle.



Step 12. Remove strut.

Step 13. Attach spacer to strut using hardware provided in the kit. (See photo)



Step 14. Reinstall strut back into place with the "R" (DRIVER SIDE) oriented as shown in photo and install the original 14mm nuts. torque strut mounting nuts to 35 ft-lb. NOTE: Installing the spacers incorrectly will cause extreme wheel misalignment.



Step 15. Slide strut back into knuckle. Be sure to align pin on strut with gap on back of knuckle. Install 14mm bolt. Torque bolt to 52 ft-lb.

Step 16. Reattach brake line.

Step 17. Repeat installation process on passenger side.

Step 18. Reinstall wheels.

Rear Installation:

Parts required: 2 1.5 inch lift blocks, 4 "U" bolts, 2 shock extensions, 2 M10x50 bolts, 2 M10 nuts.

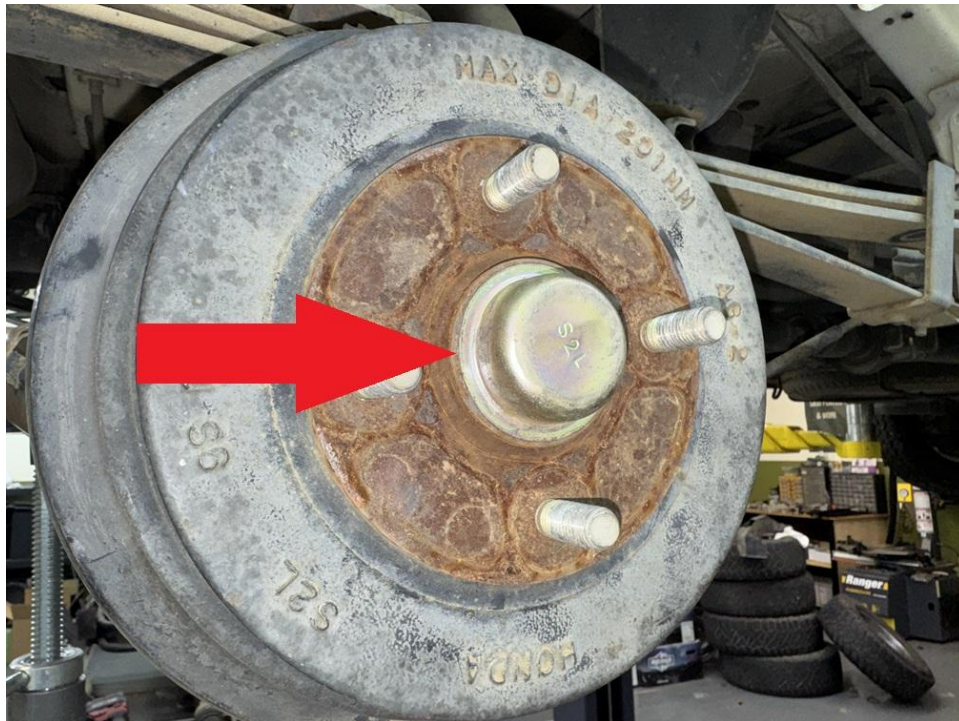
Tools required: Floor jack, jack stands, impact gun/19mm socket, 32mm socket, 3/8" ratchet, 12, 14, and 17mm sockets, 14mm wrench, flat screwdriver, rubber mallet, heavy hammer, pry bar, torque wrench.

Step 1. Lift vehicle and support with jack stands.

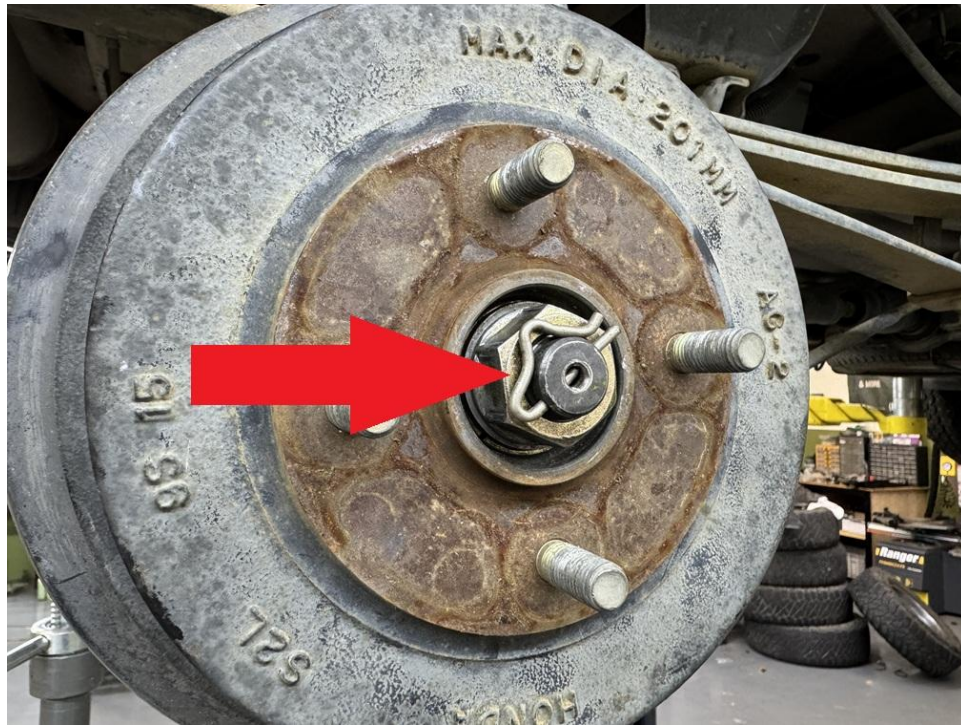
Step 2. Remove rear wheels.

Step 3. Support rear axle beam with floor jack.

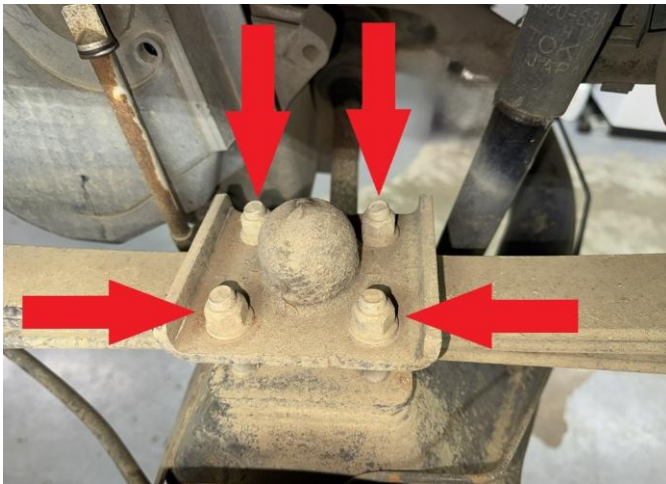
Step 4. Using a flat screwdriver, pry up and remove dust caps on both driver and passenger side.



Step 5. Remove spring clip and 32mm nut.



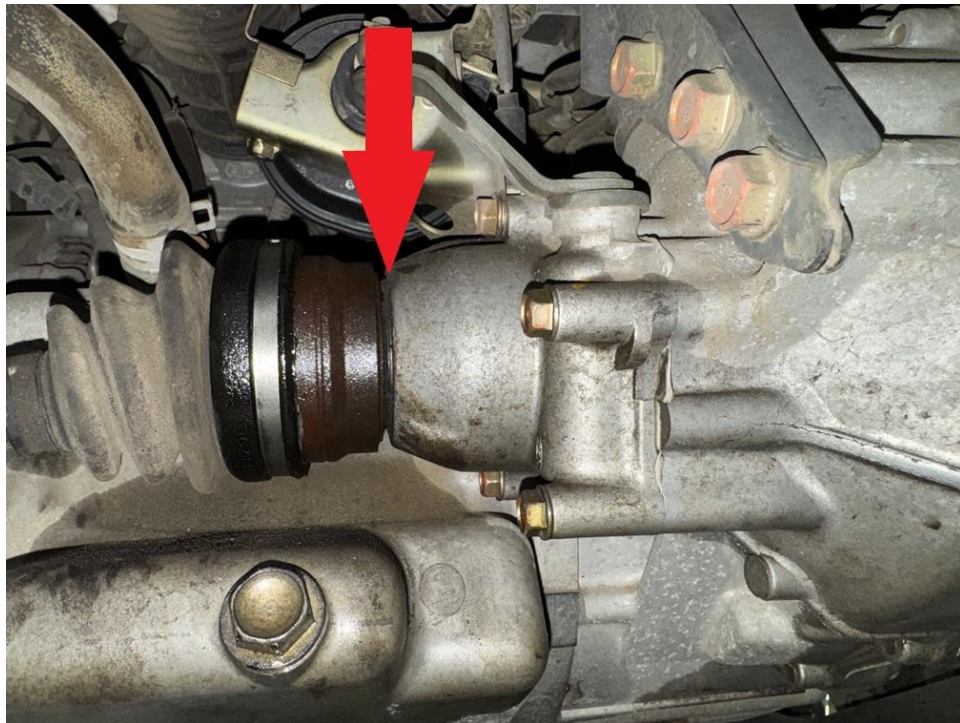
Step 6. Remove bolts holding leaf spring to axle on both driver and passenger side.



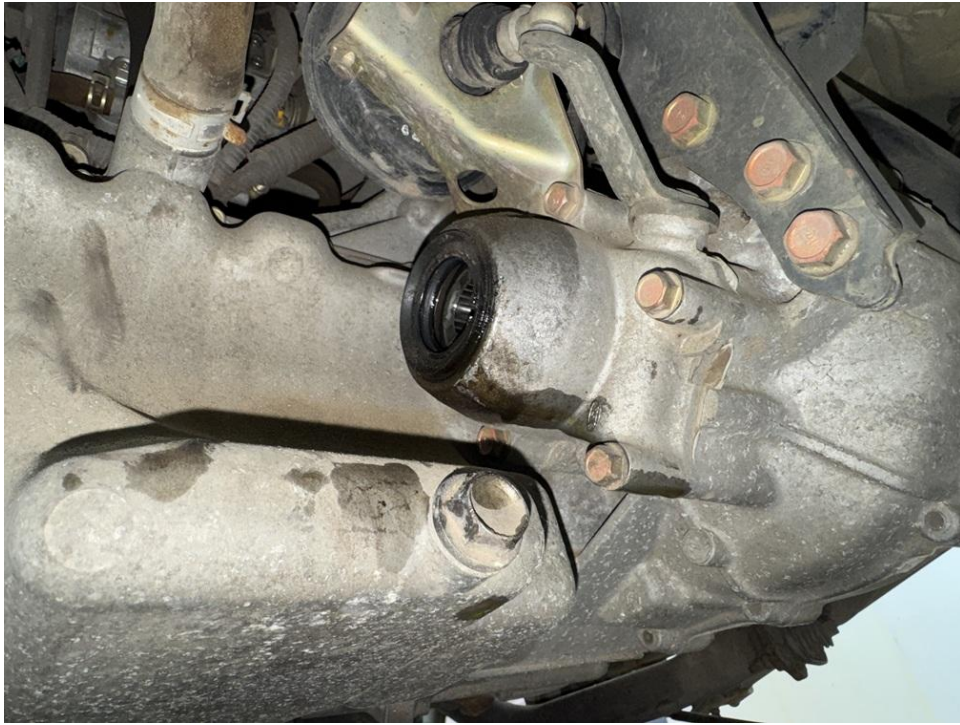
Step 7. Remove bolts holding rear shocks to axle beam.



Step 8. Using a pry bar, pop passenger side axle out of transmission.



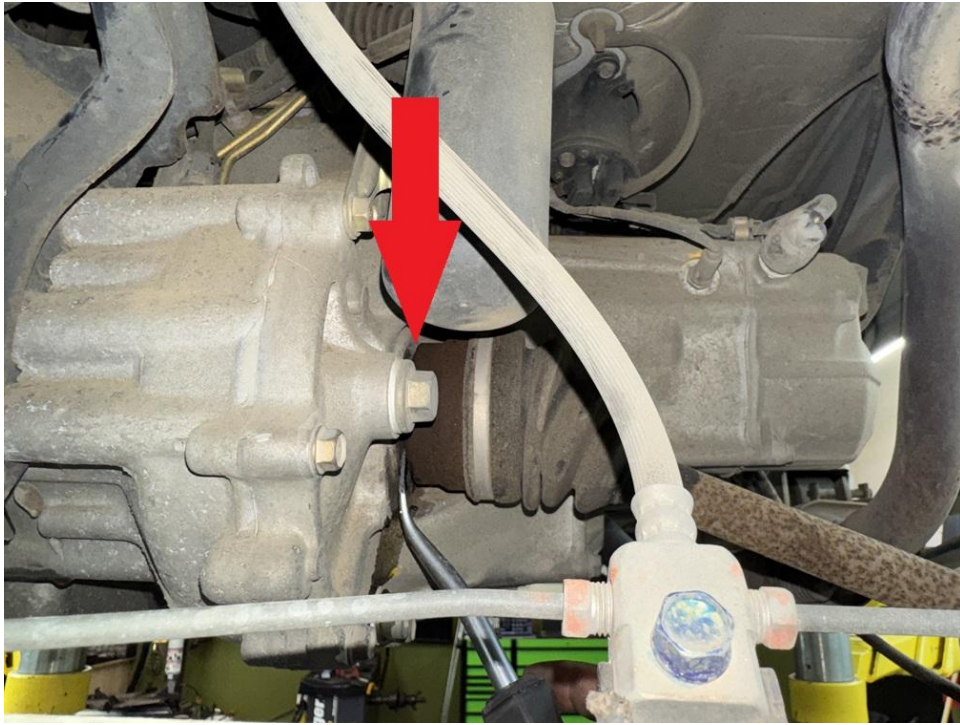
Step 9. Shift rear axle beam over far enough to allow the passenger side axle to come completely out of the transmission.



Step 10. Using a heavy hammer, tap axle out of outer hub. Take care not to damage the end of the axle! Remove axle. Take care not to lose OEM washers.



Step 11. Repeat process on driver side.



Step 12. With axles removed, remove OEM "U" bolts, and install longer "U" bolts included in the kit.





Step 13. Reinstall passenger side axle into hub, secure with OEM washers and 32mm nut. Torque nut to 240 ft-lb

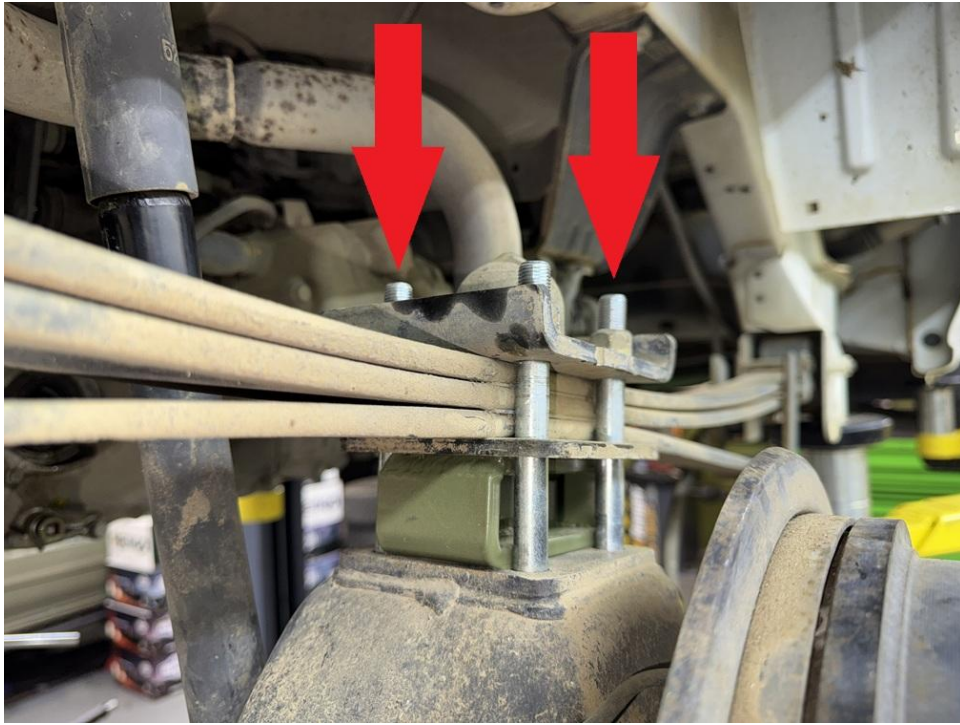
Step 12. Repeat "U" bolt and axle installation on driver side.

Step 13. Using a rubber mallet, carefully pop axles back into transmission. Be sure the axles are fully seated.

Step 14. Place lift block with centering pin facing down. Install OEM base plate between lift block and spring pack as shown in photo.



Step 15. Slide "U" bolts through mounting plate and secure using OEM hardware.



Step 16. Repeat lift block installation on opposite side. Torque nuts to 75 ft-lb.

Step 17. Install shock extensions as shown.



Step 18. Reinstall wheels.

Step 19. Get a professional alignment.

Step 20. Find some trails!

Note: Installing a lift kit will change the suspension geometry and will require a 4-wheel alignment.

Warning: Failure to follow the procedures in these installation instructions may result in unsafe handling characteristics, damage to vehicle, or loss of control.

For tech support, please call 1-844- HRG LIFT (474-5438) from 8-4:30 EST Mon-Fri or email us 24/7 at support@hrgoffroad.com.

This product is intended for off-road use only!!

Copyright HRG Offroad 2026

Checklist:

- 99-09 Acty 1.5F **5900** (1L, 1R)
- 99-09 Acty 1.5 Rear Lift Blocks **5605** (2)
- M12-1.25x120 "U" Bolts (4)
- Acty/Sambar RSE **9052** (2)
- Sticker
- Instruction Card