



STEPWGN 2WD/4WD 3" Ultimate lift kit installation guide

Professional installation is recommended

FOR OFF-ROAD USE ONLY!

IMPORTANT!

Lifting and modifying the suspension on your vehicle may result in drive line vibrations, damaged bushings, erratic handling characteristics, and shortened suspension component life. HRG Offroad recommends the following:

- Checking and/or replacing worn drive axles with new parts, not remanufactured.
- Checking and/or replacing all worn factory rubber bushings with urethane bushings, such as Prothane.
- Checking and/or replacing worn shock absorbers and bump stops.
- Performing a 4 wheel alignment after working on suspension components.

Lift kits may not be legal for use on public highways in your area. Please check local laws before installing!!

WARNING!

Lifted vehicles are more prone to rolling over.

Some HRG Offroad products are designed to improve off-road capabilities. Modifying the suspension of your vehicle may result in handling characteristics that are different from a factory equipped vehicle. Extreme care must be used to prevent a rollover or loss of control. Always operate your modified vehicle at a reduced speed to ensure your ability to maintain control under all driving conditions. Driving your vehicle in an unsafe manner may result in serious injury or death. HRG Offroad lift kits are designed and tested to work together. HRG Offroad does not recommend combining this lift kit with any other type of suspension or body lift. Always wear your seat belt.

Recommended tire/wheel sizes:

Stock size: 205/60/16 (25.7")

225/60/16 (26.6")

215/65/16 (27")MAX SIZE

Stock size: 205/55/17(25.7")

215/55/17 (26.3")

215/60/17 (27.2")MAX SIZE

Included in the kit:

- 2 2.5" (64mm) lift spacers (front)
- 1 1.0" (25.4mm) lift spacers (rear)
- 2 1.5" rear shock extensions
- 1 1.5" steering shaft extension
- 9 1.25x1.5 M12 spacers
- 4 2.25x1 M14 spacers (rear subframe)

- 2 1.5 H spacers (torque mounts)
- 8 1.25x1.5 M14 (front subframe)
- 2 front brake line brackets
- 2 front ABS wire brackets
- 2 rear brake line brackets
- 1 wiring bracket
- 4 M14x150 bolts (rear subframe)
- 4 M14x135 (front subframe)
- 4 M14x125 (front subframe)
- 2 M12x60 (engine mount)
- 4 M12x80 (rear trailing arm mounts)
- 2 M12x80 (transmission mount)
- 4 M10x60 (torque mounts)
- 5 Extended exhaust hangers
- 0.5x1/M6x40 (1 pack of 2)
- 1 1.5" Foam seal
- 1 HRG koozie
- 1 HRG T-shirt
- 1 Ruler (for measuring bolt length in mm)
- 1 Instruction Card

Tools required:

Floor jack, lug wrench, metric socket set up to 21mm, metric wrench set up to 21mm, impact wrench, body saw or similar tool for cutting plastic, torque wrench, paint pen.

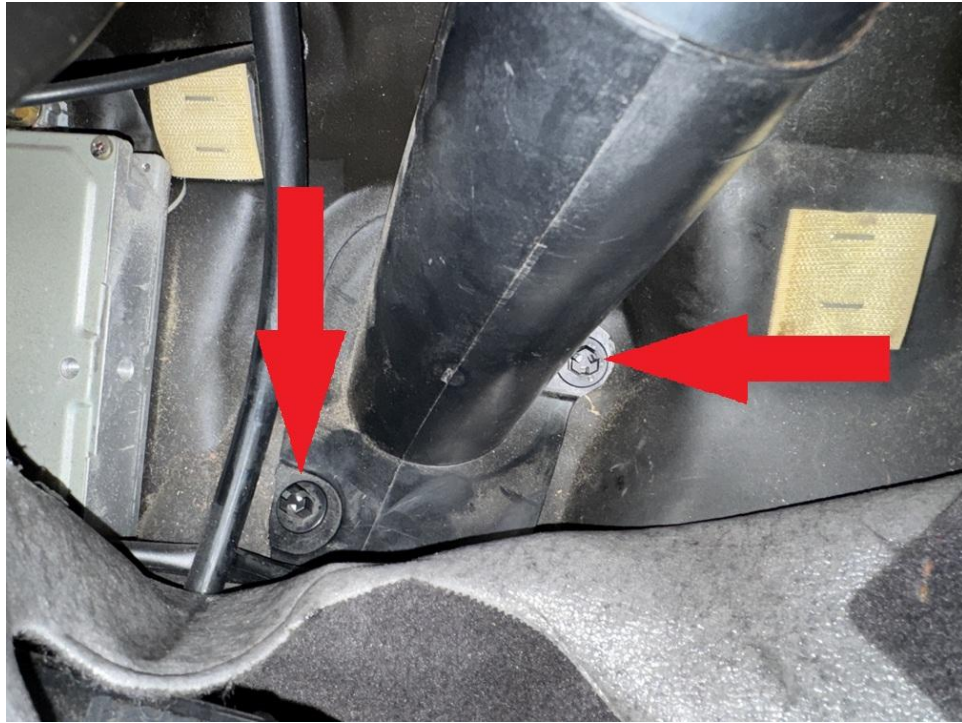
Skill level: Moderate

Installation time: 4-6 hours

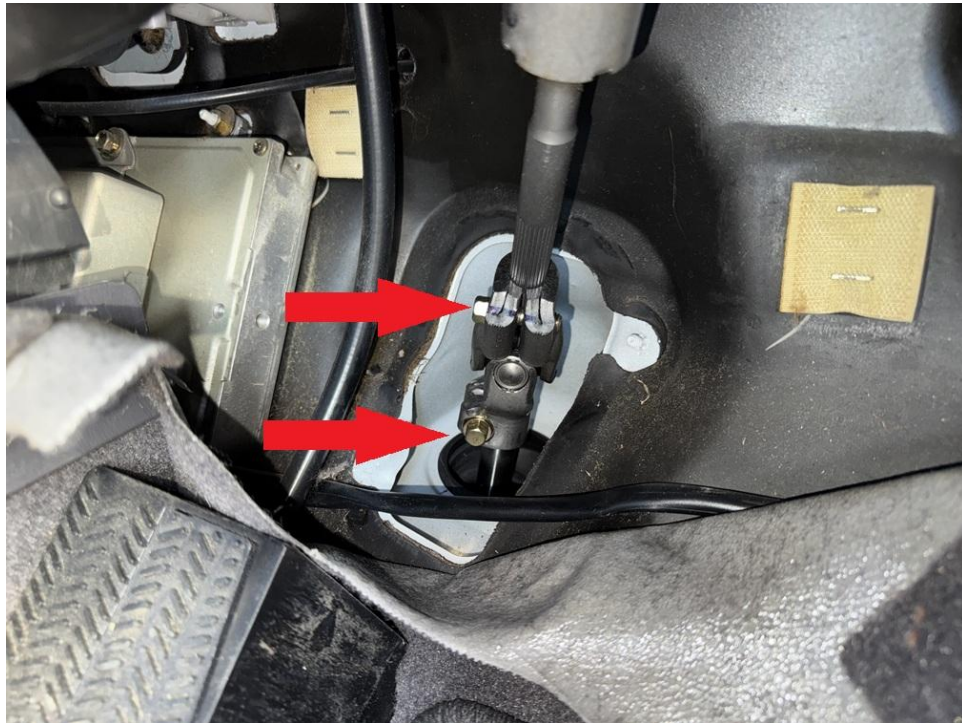
Front installation:

Step 1. Pass seat belt through steering wheel to prevent rotation.

Step 2. Remove plastic cover on steering column.



Step 3. Remove steering coupler.



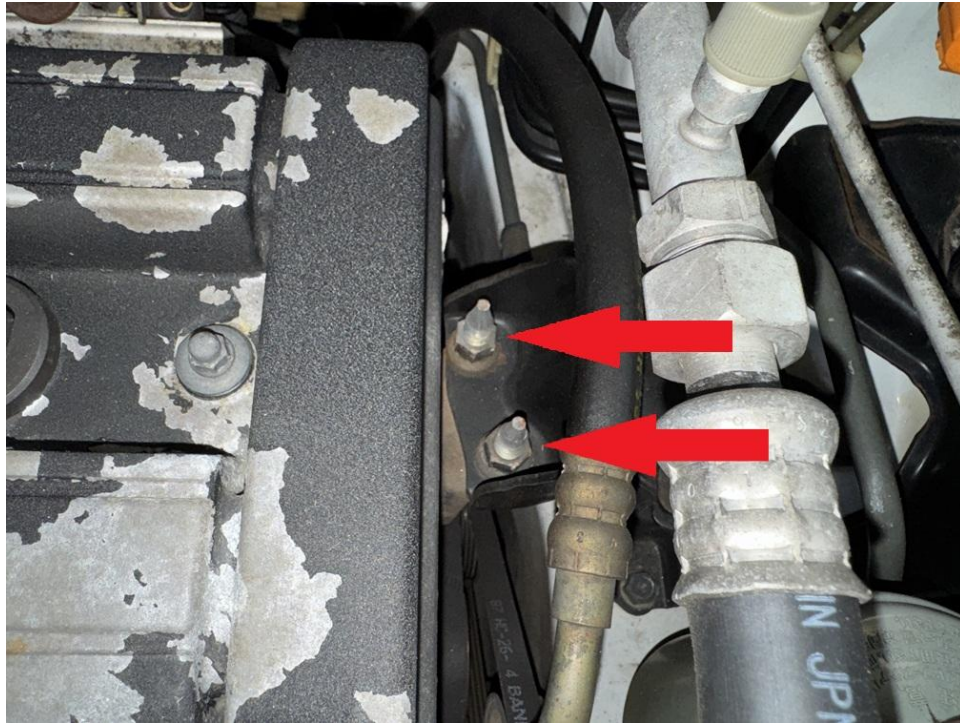
Step 3. Place steering extension on steering rack as shown. Steering coupler will be reinstalled in a later step.



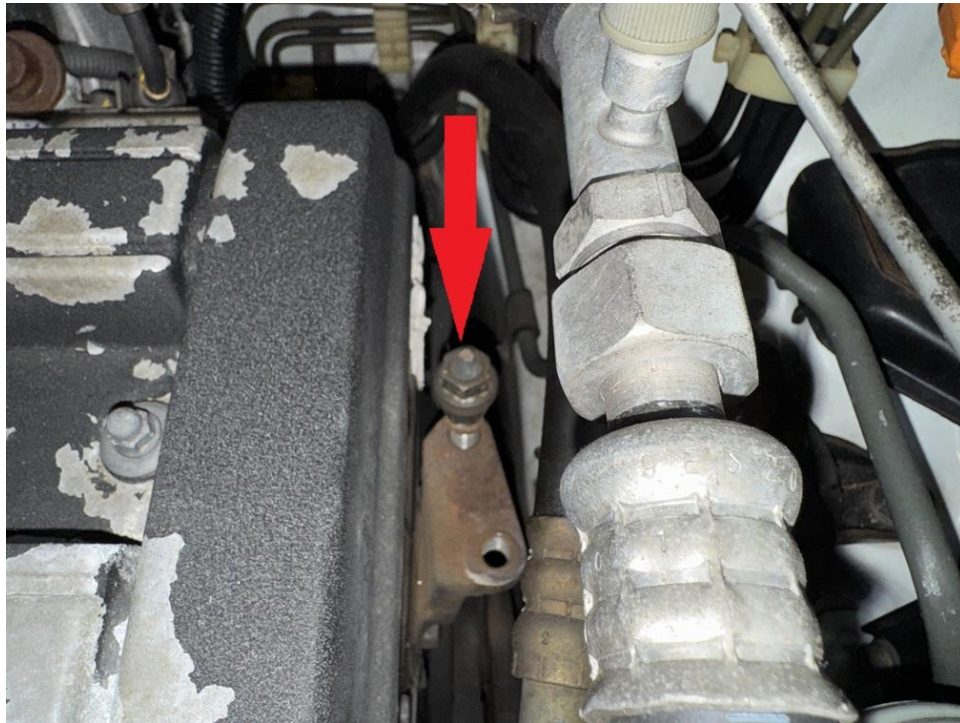
Step 4. Support engine/transmission with floor jack, taking care not to dent oil pan.



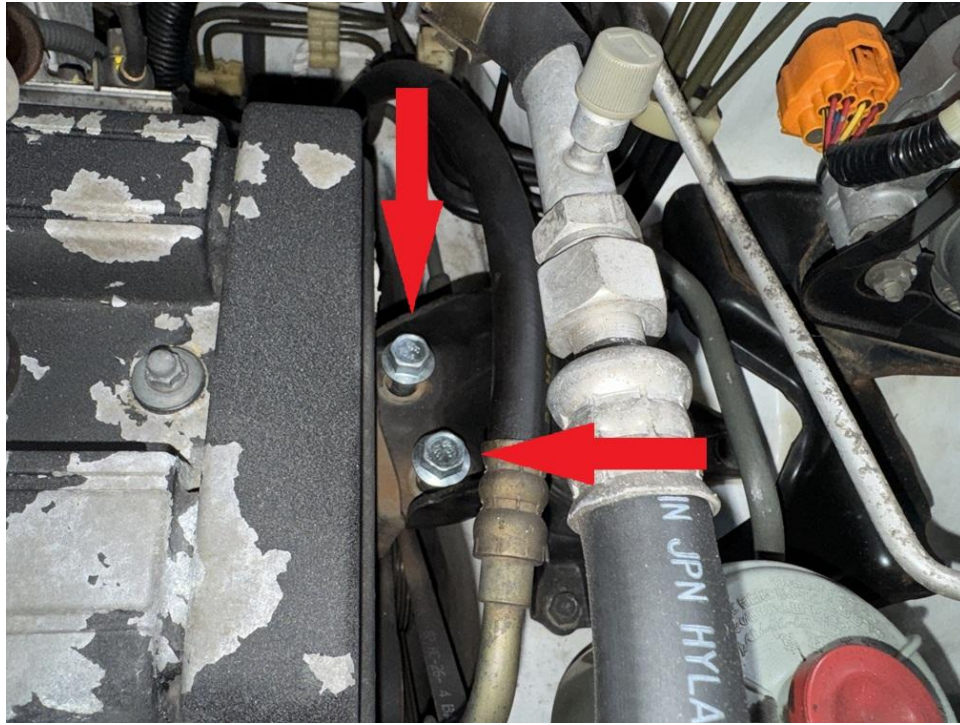
Step 5. Remove nuts holding engine mounting bracket in place. Remove engine mounting bracket.



Step 6. Remove studs. Method 1: tighten 2 nuts against one another and back the stud out. Method 2. Weld nut to stud and back the stud out.



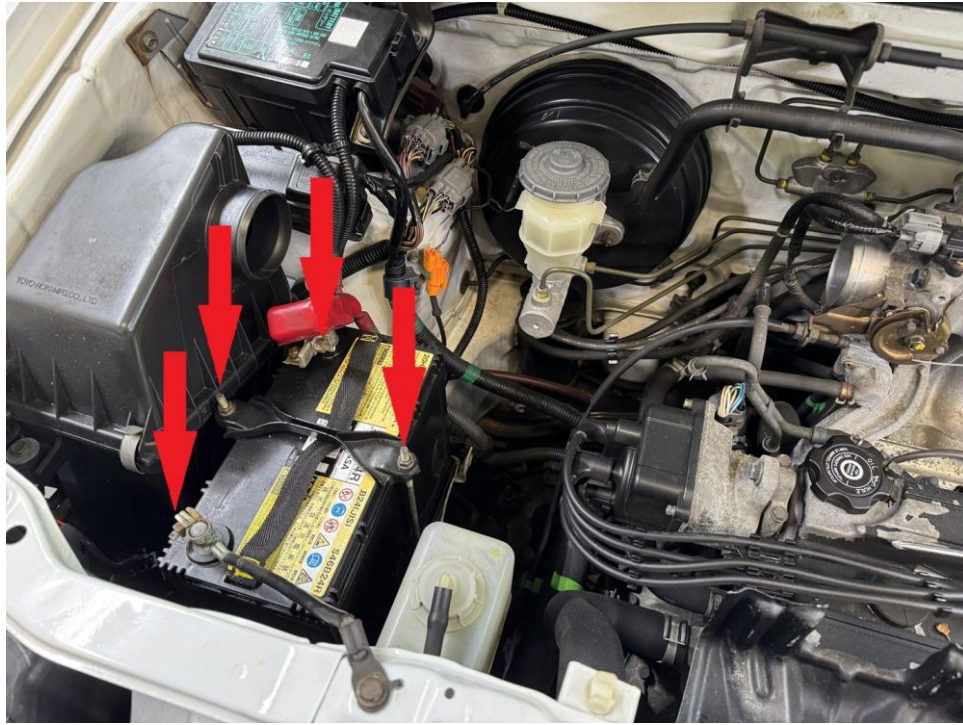
Step 7. Temporarily thread in M12x60 bolts included with the kit to keep engine in place when lowering subframe. Be sure to allow at least a 1.5 inch gap between engine and engine bracket.



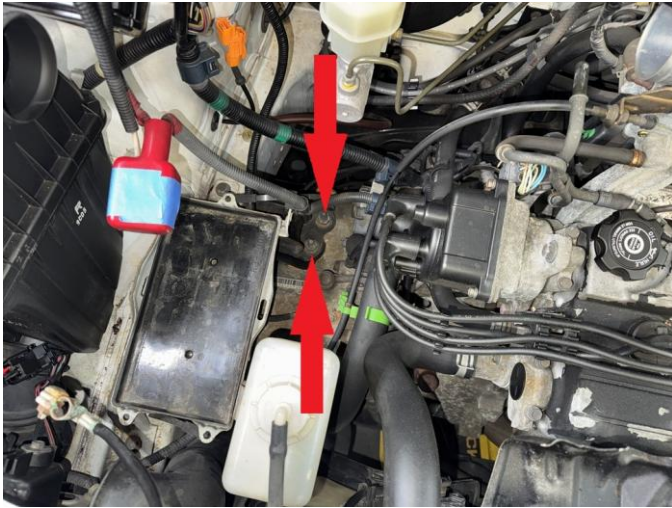
Step 8. Remove air intake tube.



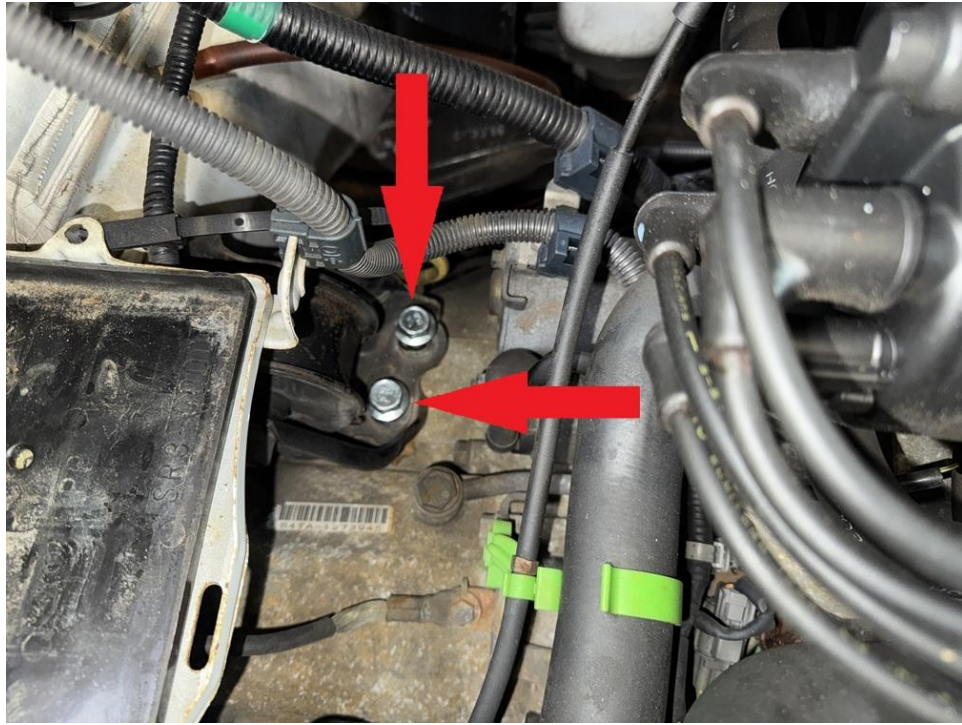
Step 9. Disconnect battery and remove mounting bracket.



Step 10. Remove transmission studs.

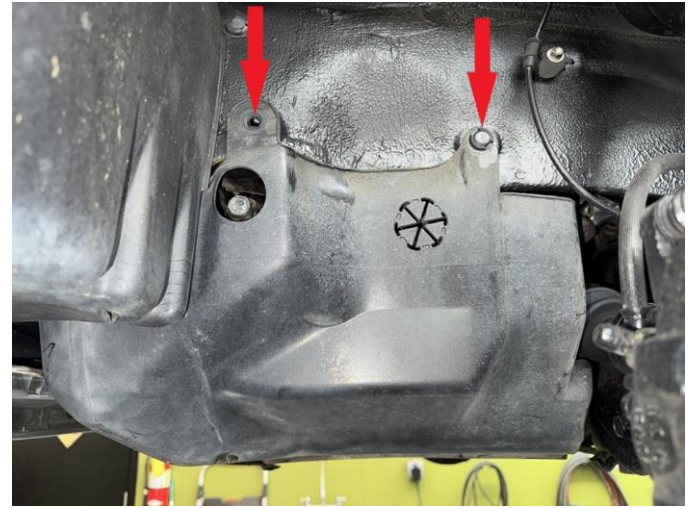


Step 11. Temporarily install M12x80 bolts into transmission. Be sure to allow at least a 1.5 inch gap between the transmission bracket and transmission.



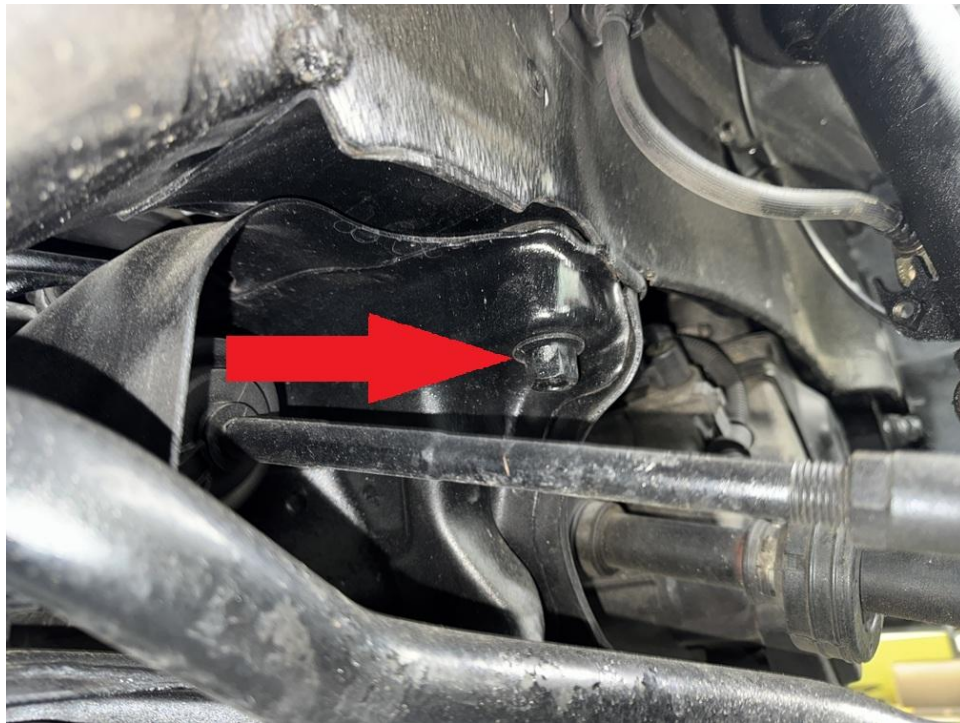
Step 12. Remove plastic clips and screws holding plastic splash guard.





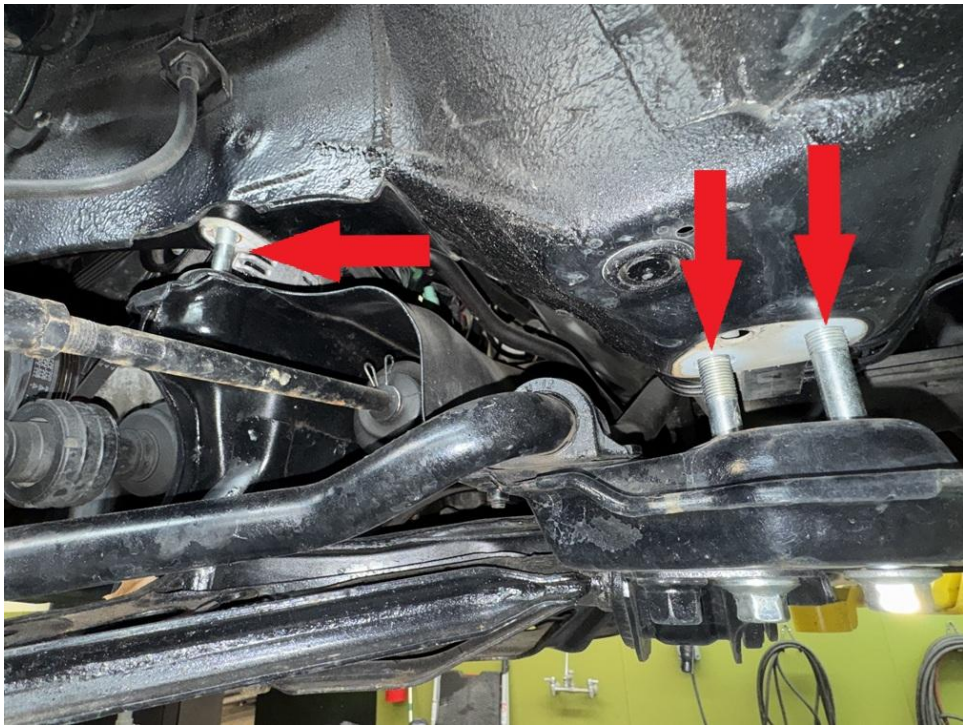
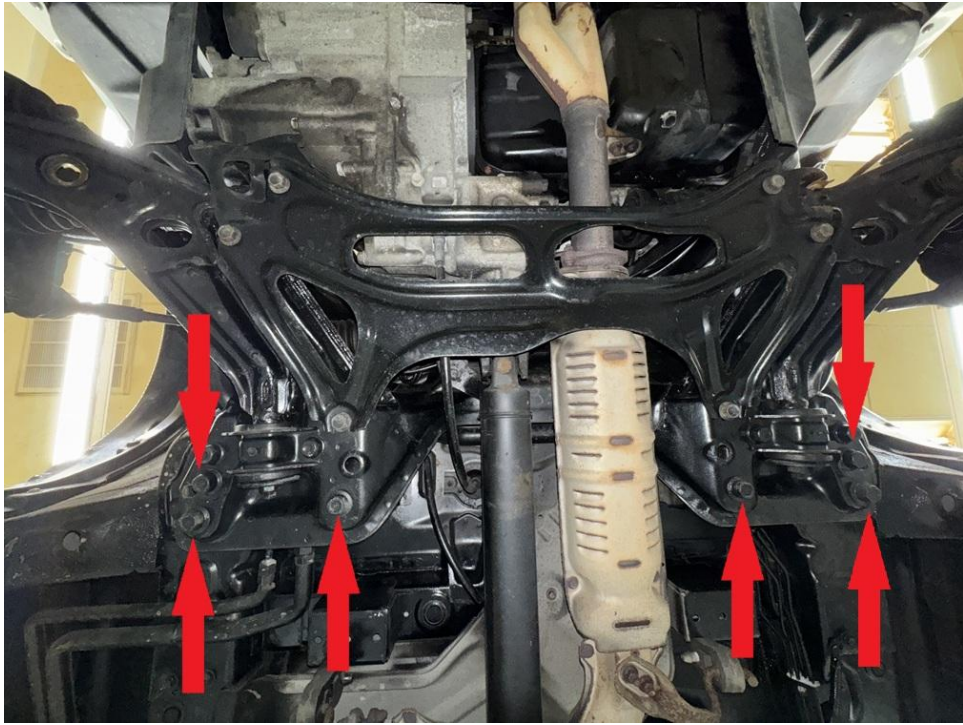
Step 13. Support front subframe with floor jack or screw jack.

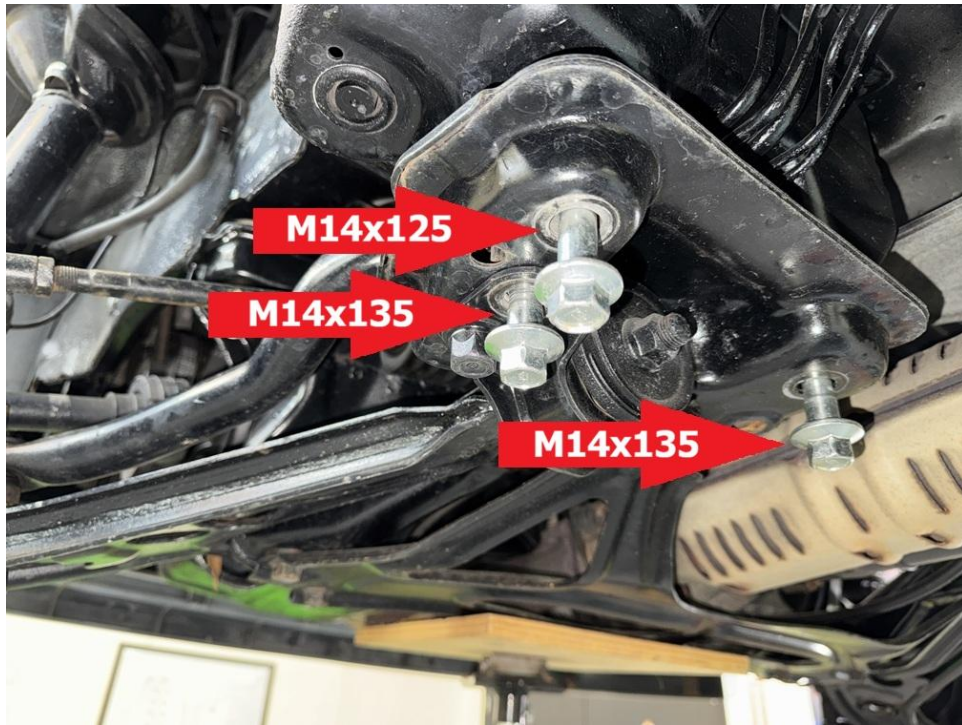
Step 14. Remove subframe bolt in the driver side wheel well. (see photo)



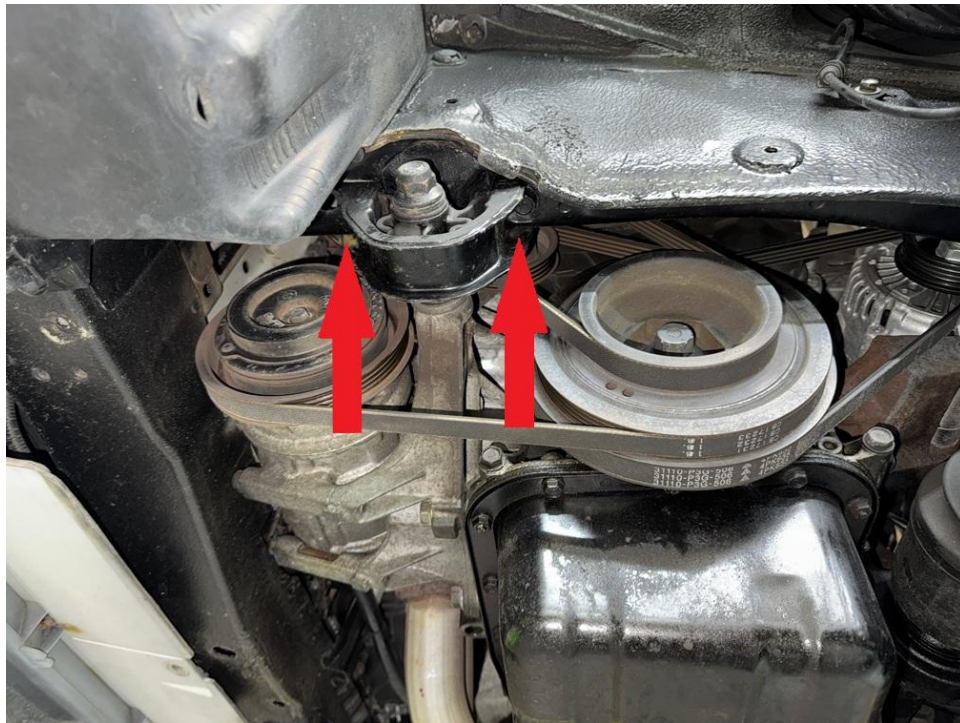
Step 15. Temporarily thread in M14x125 bolt included in the kit. Repeat on passenger side.

Step 16. Remove remaining subframe bolts ONE AT A TIME and replace with longer M14x125 and M14x135 bolts included with the kit. (see photos)



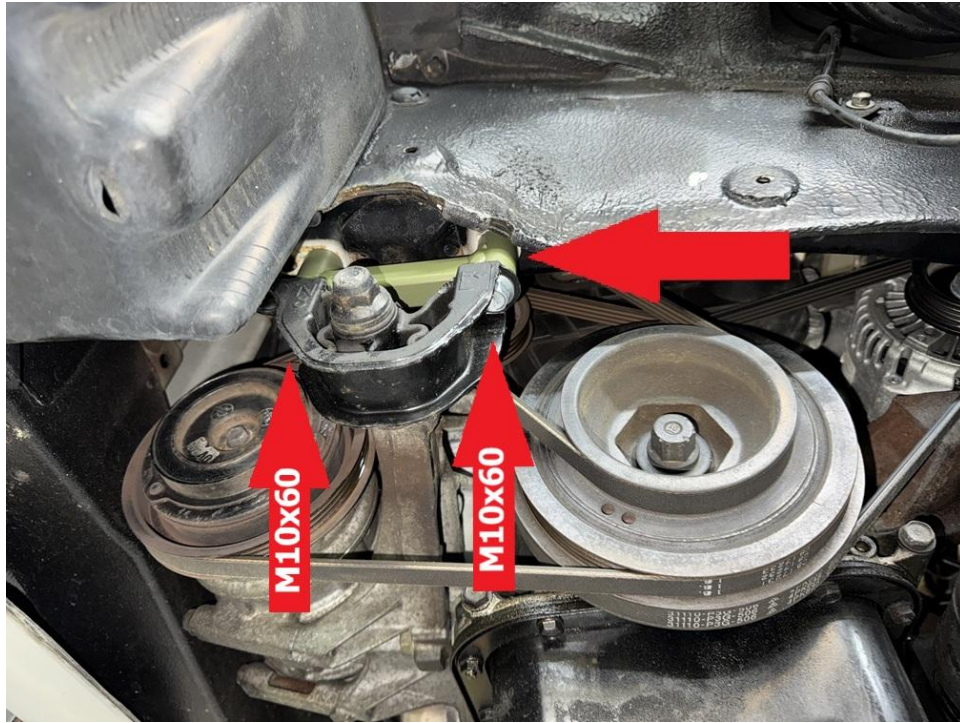


Step 17. Remove bolts holding driver side torque mount. Repeat for passenger side.



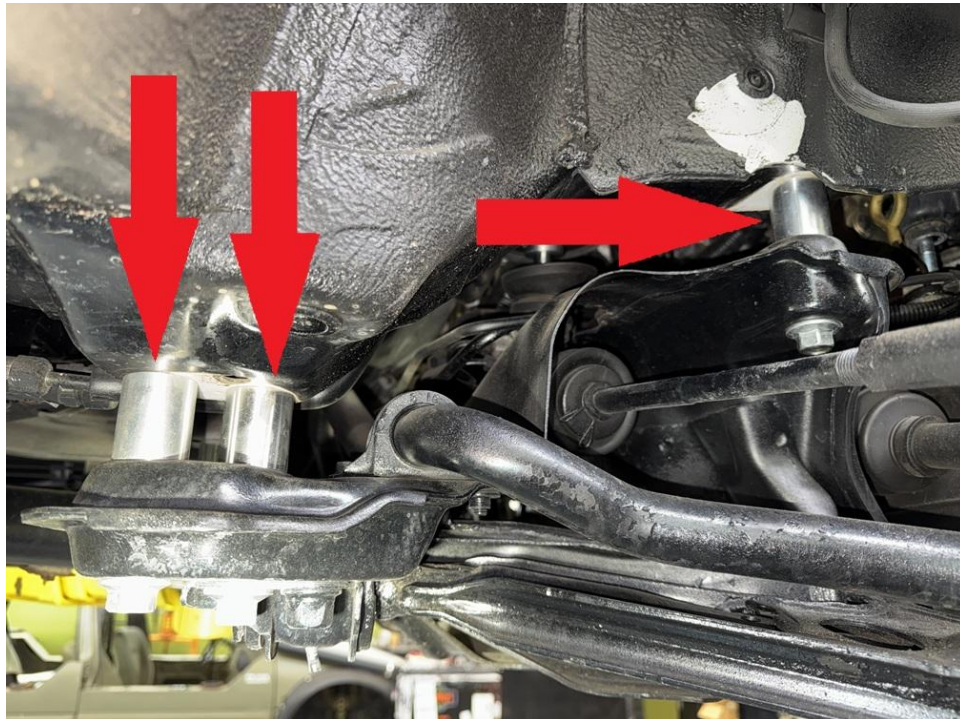
Step 18. Carefully lower engine and subframe approximately 1.5 inches.

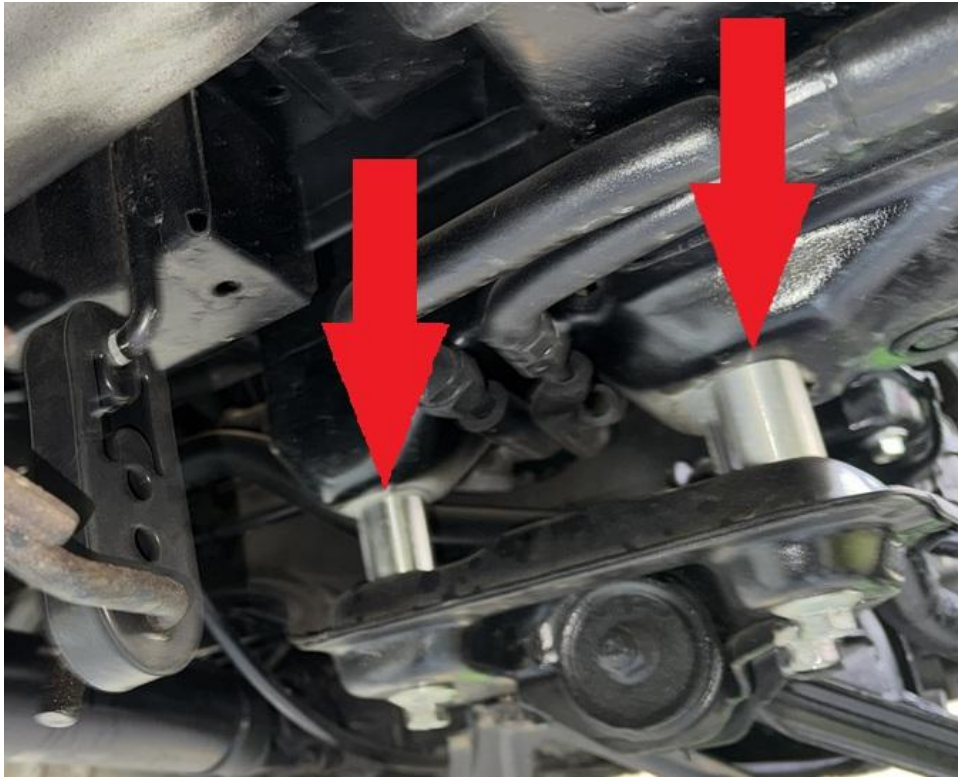
Step 19. Install 1.5 inch "H" spacer between driver side torque mount and frame rail. Install M10x60 bolts. Repeat for passenger side.



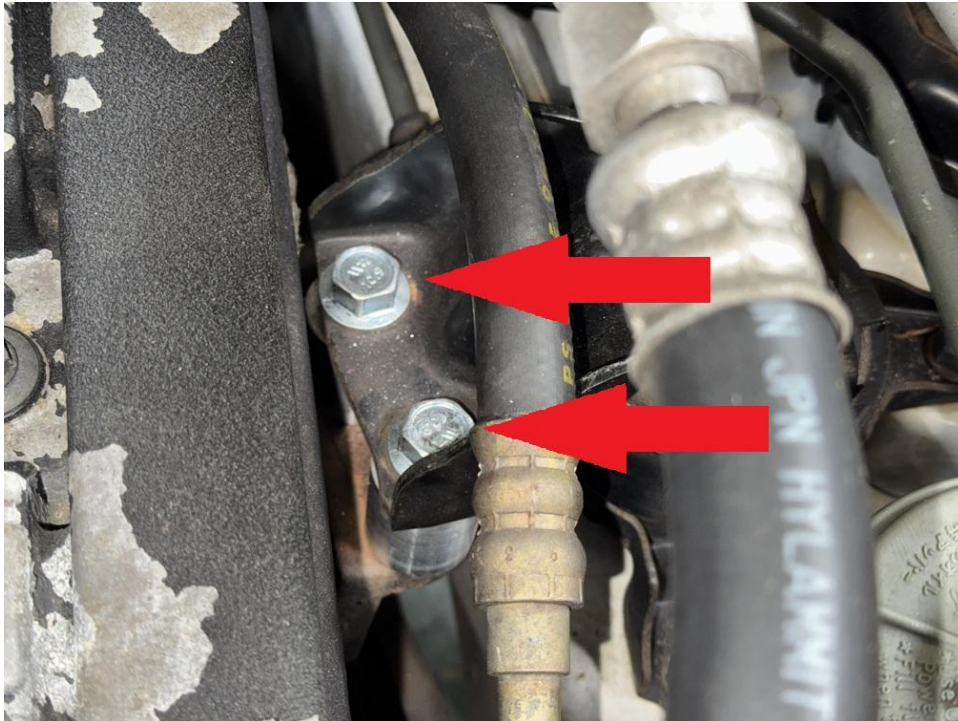
Step 20. Loosen all subframe mounting bolts to allow at least a 1.5 inch gap between the subframe and the body.

Step 21. Remove M14x125 bolt in the driver side wheel well, place 1.25x1.5 M14 spacer between subframe and frame rail. Repeat process for ALL subframe bolts. Torque bolts to 115 ft-lb.





Step 22. Remove bolts in engine mounting bracket. Place 1.25x1.5 M12 spacer between engine bracket and engine. Reinstall bolts. Torque to 80 ft-lb.

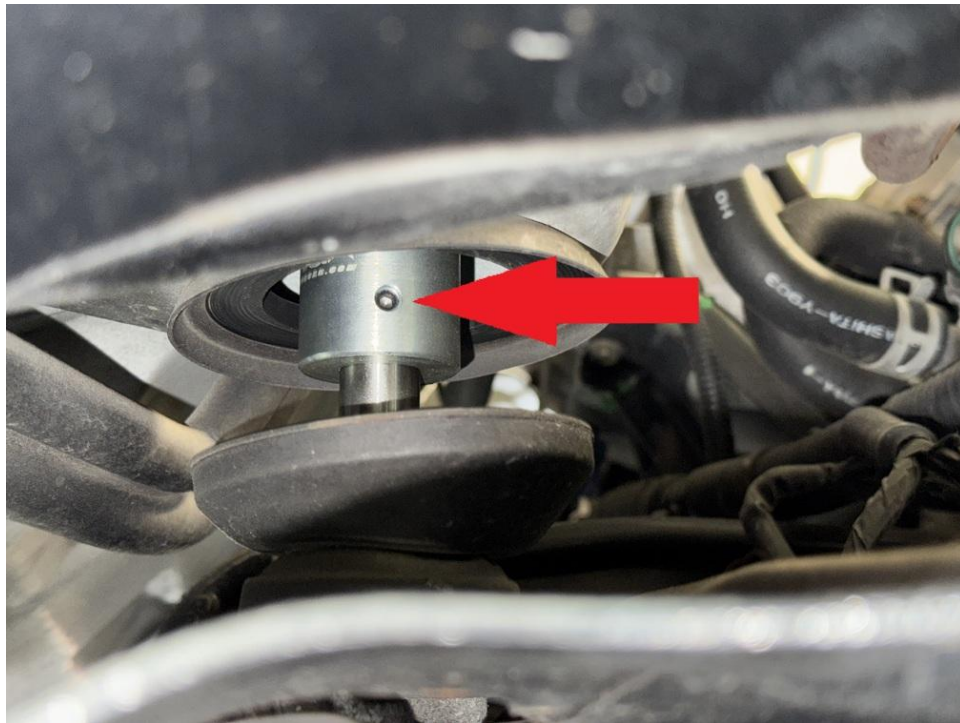


Step 23. Remove bolts in transmission bracket. Place 1 1.25x1.5 M12 spacers between transmission mounting bracket and transmission. Torque bolts to 80 ft-lb.

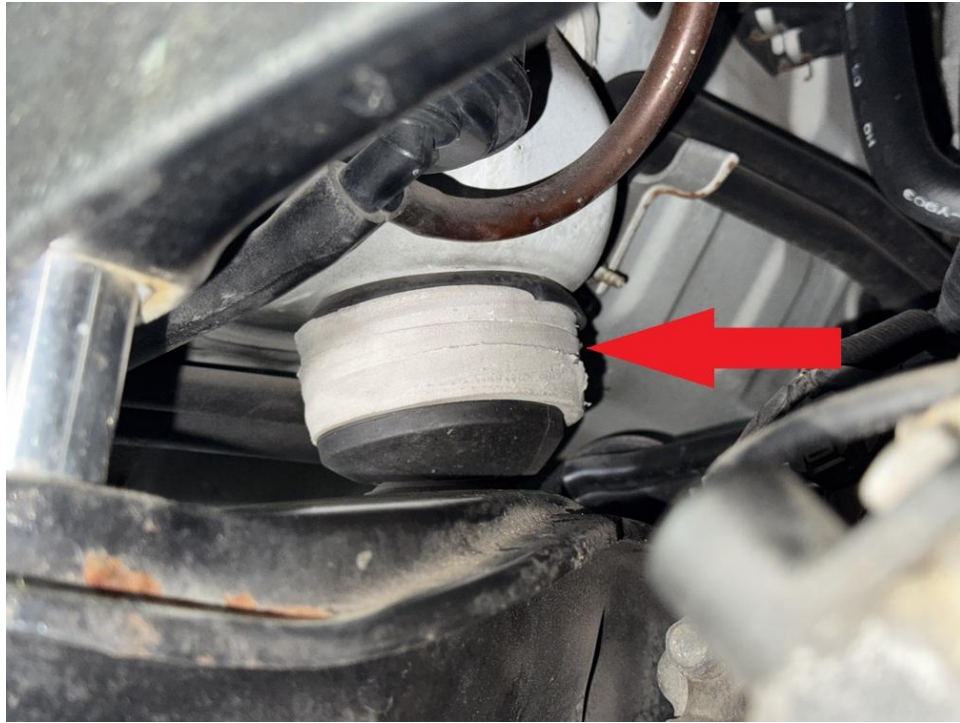
Step 24. Reinstall steering coupler and plastic cover.



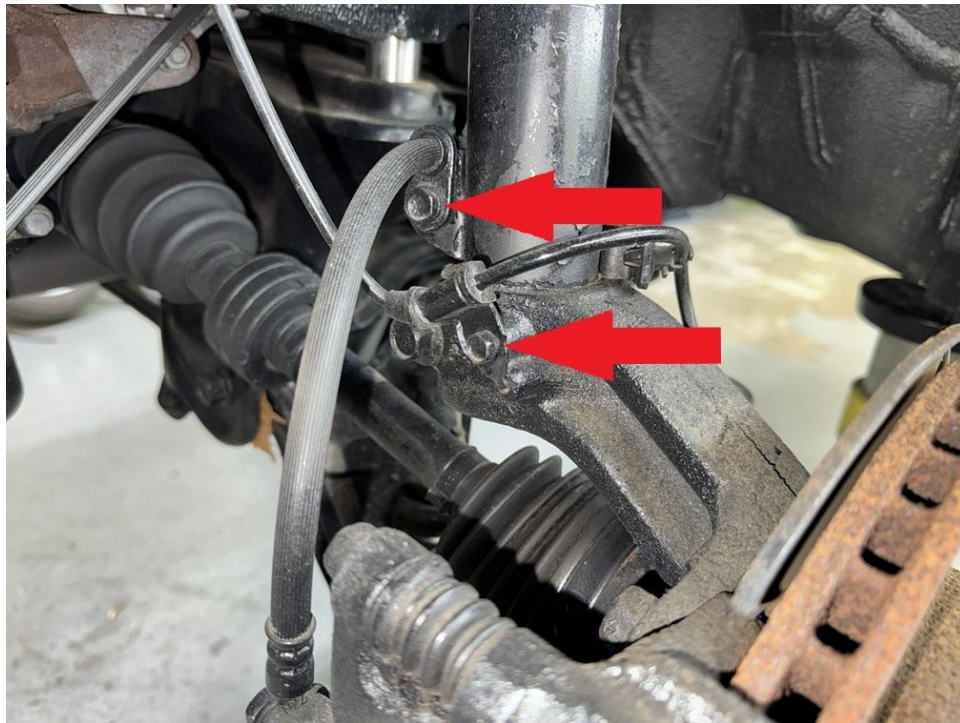
Step 25. Tighten set screws on steering extension.



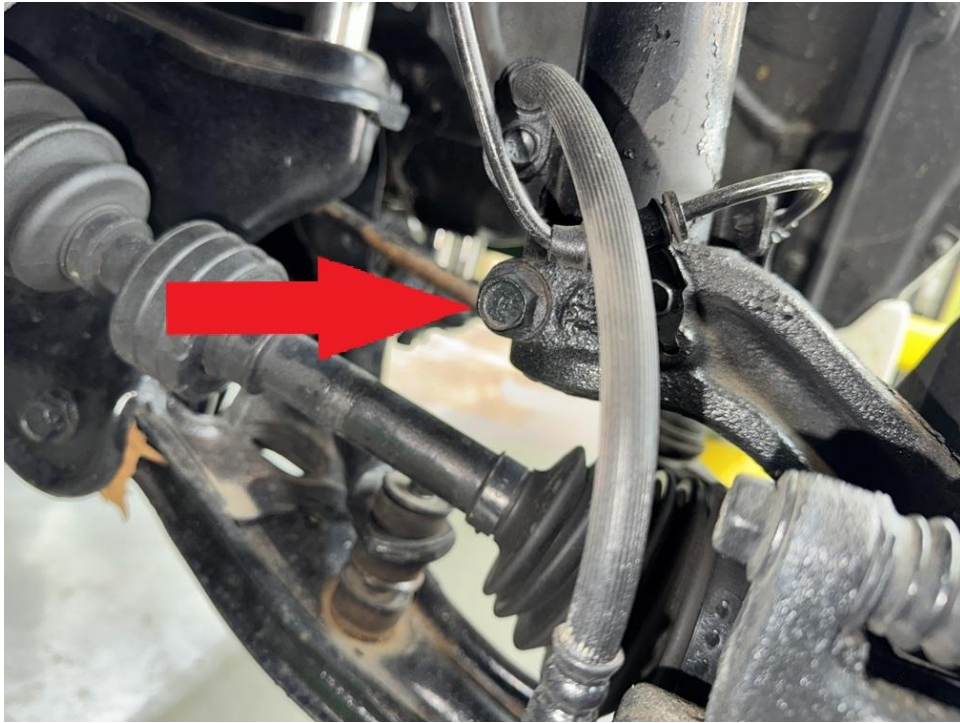
Step 26. Install foam seal as shown.



Step 27. Remove bolts holding ABS wire and brake line to driver side strut.



Step 28. Remove 17mm bolt holding strut to knuckle.

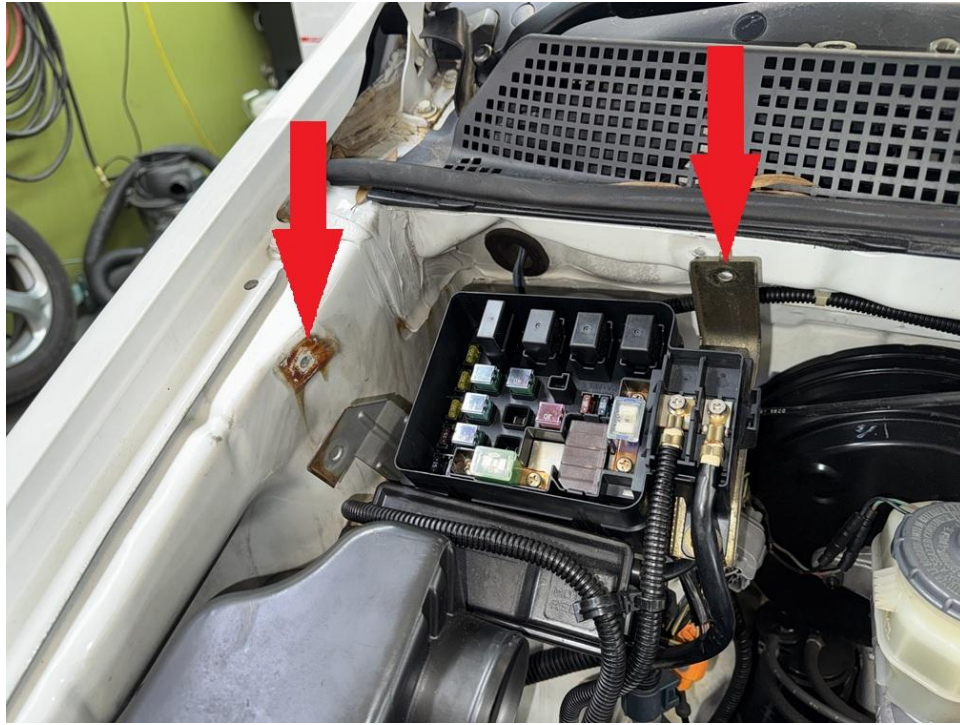


Step 29. Remove sway bar end link. Take note of where all the pieces go for reassembly later.

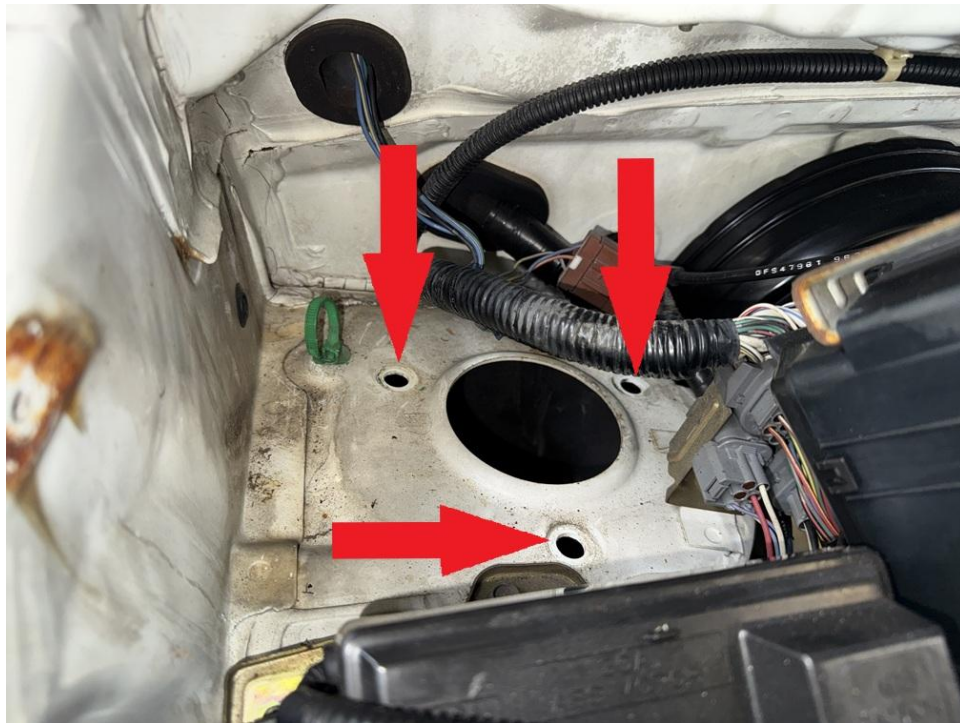


Step 30. Repeat disassembly process for passenger side.

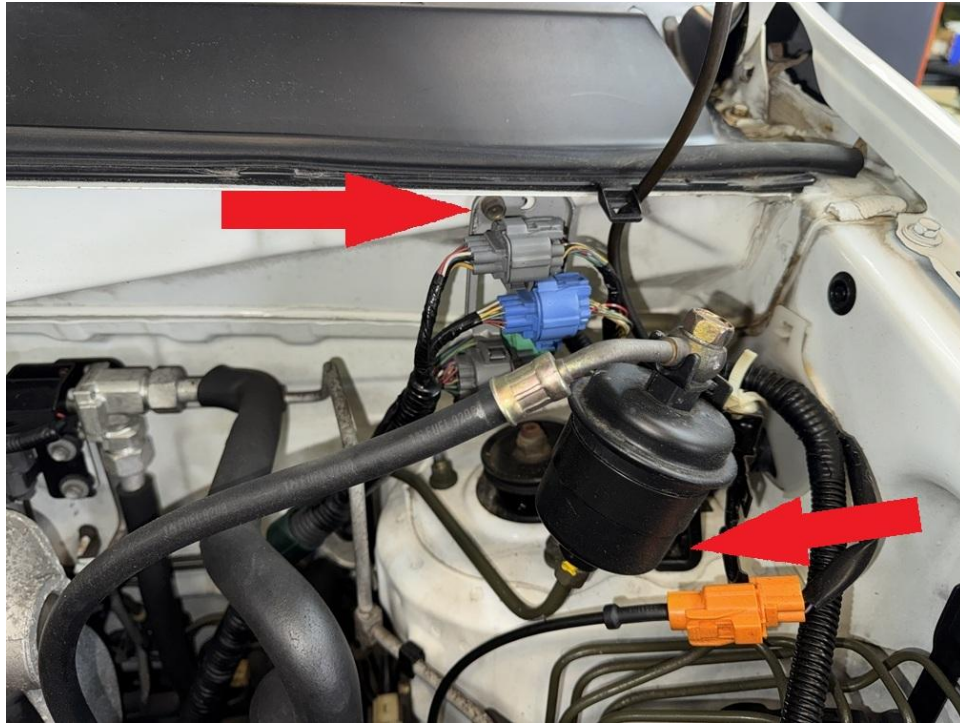
Step 31. Remove bolts holding fuse box to firewall to gain access to driver side shock tower.



Step 32. Remove 14mm nuts from top of driver side strut, remove strut.



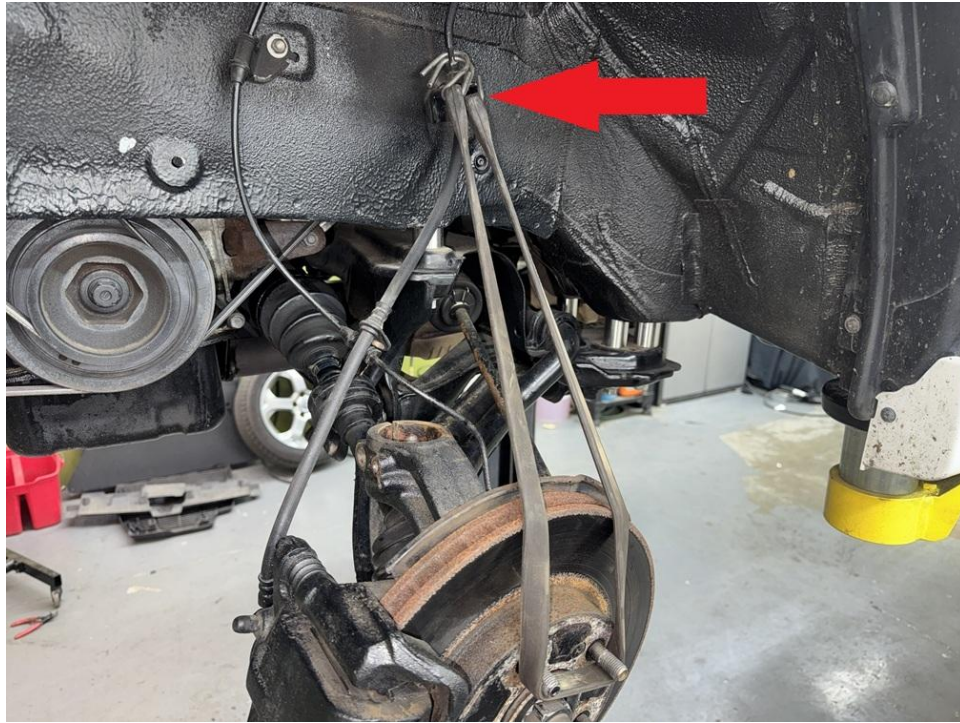
Step 33. Remove harness bracket and fuel filter from shock tower to gain access to passenger side strut mounting nuts.



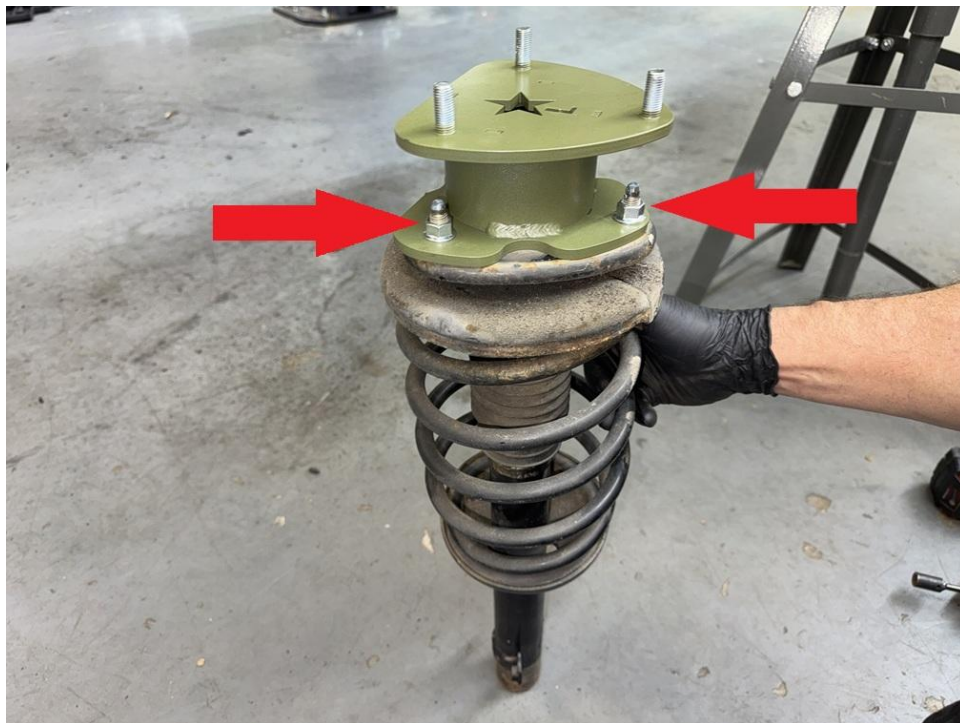
Step 34. Remove passenger strut.



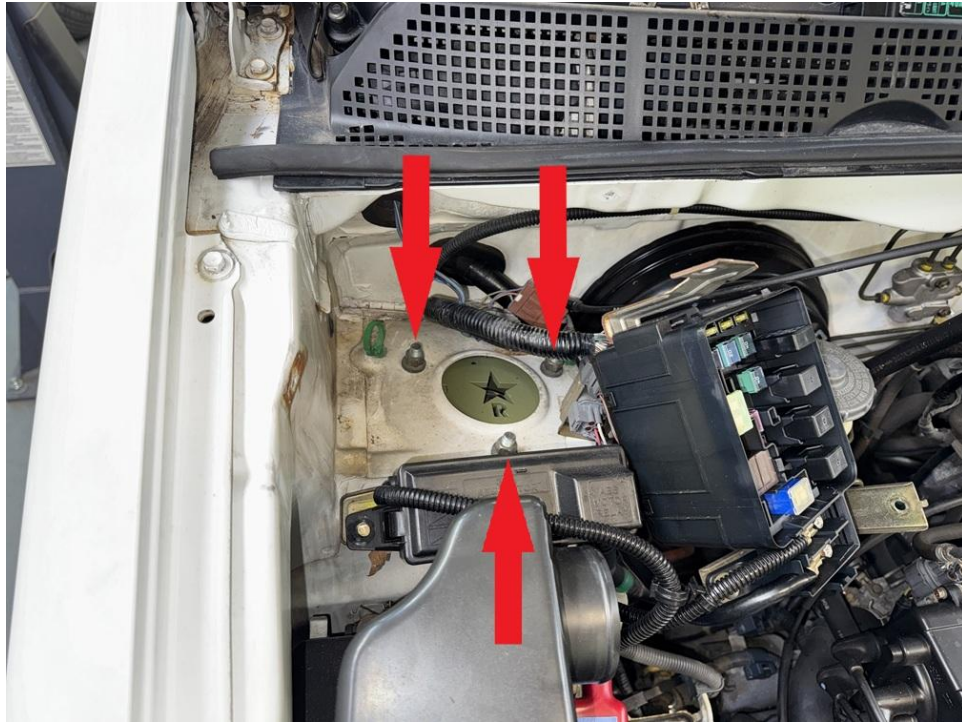
Step 35. Pull strut clear from knuckle. Take care not to let the axle come out of the inner CV joint!



Step 36. Install lift spacers onto struts using OEM hardware. Spacer marked "L" goes on the PASSENGER SIDE, spacer marked "R" goes on the DRIVER SIDE in JDM RHD models.

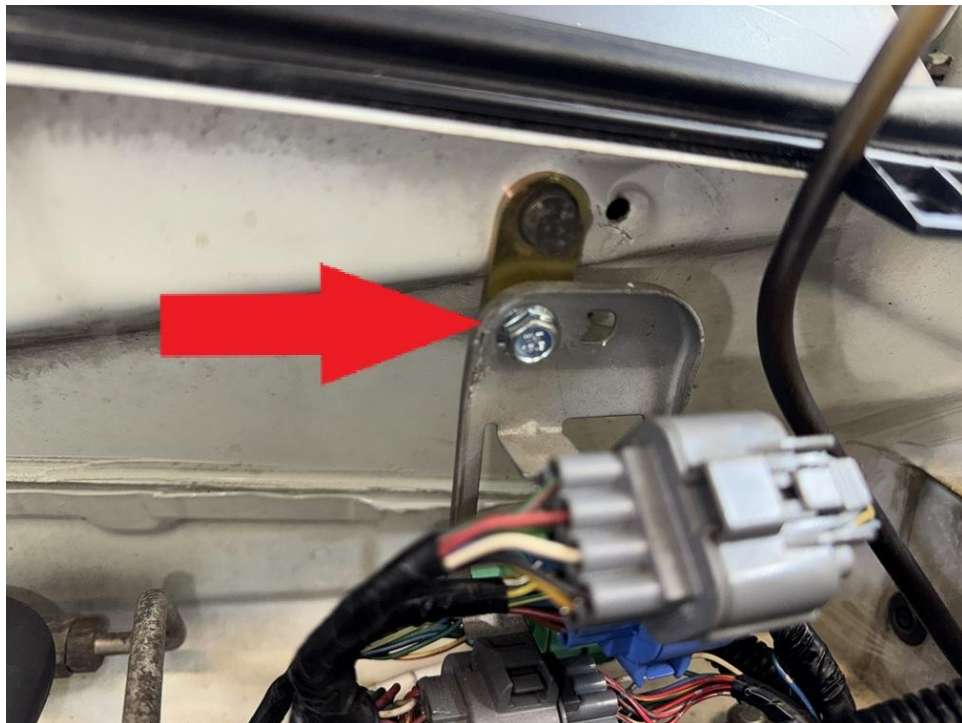


Step 37. Reinstall both driver and passenger side struts to shock tower using the OEM nuts. Torque nuts to 33 ft-lb.

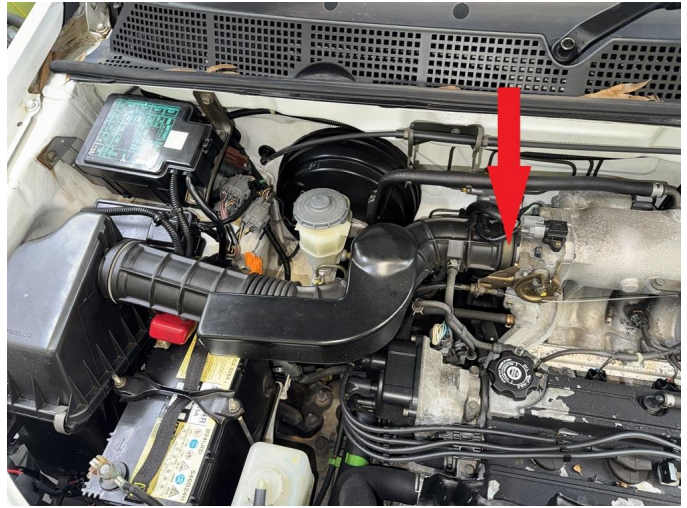
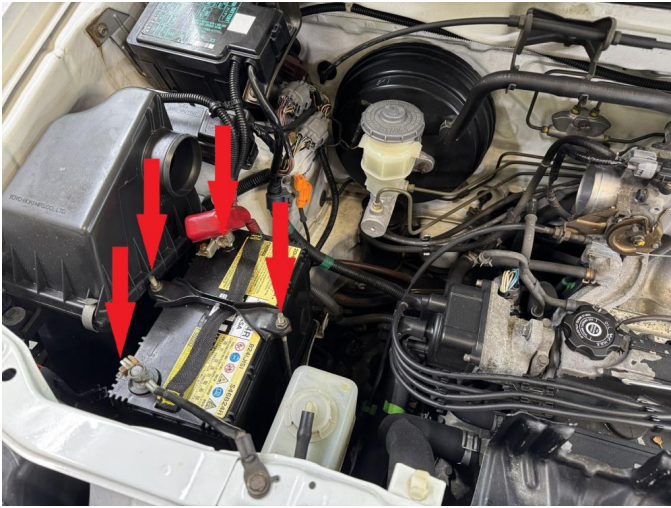


Step 38. Reinstall fuse box and fuel filter.

Step 39. Install wire harness bracket as shown:

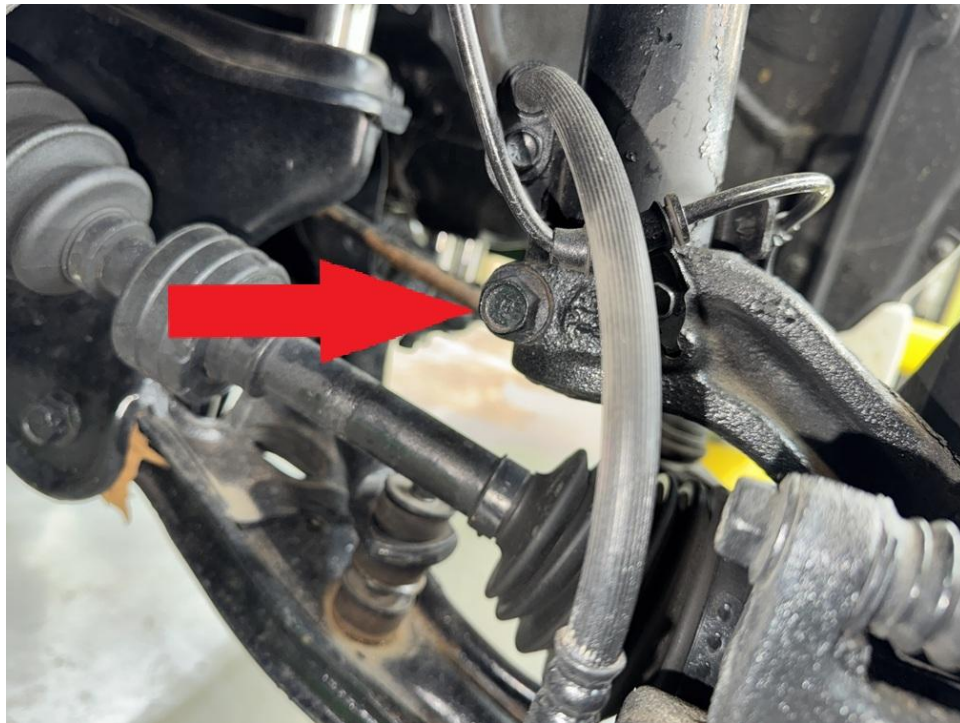


Step 40. Reinstall battery and air intake.

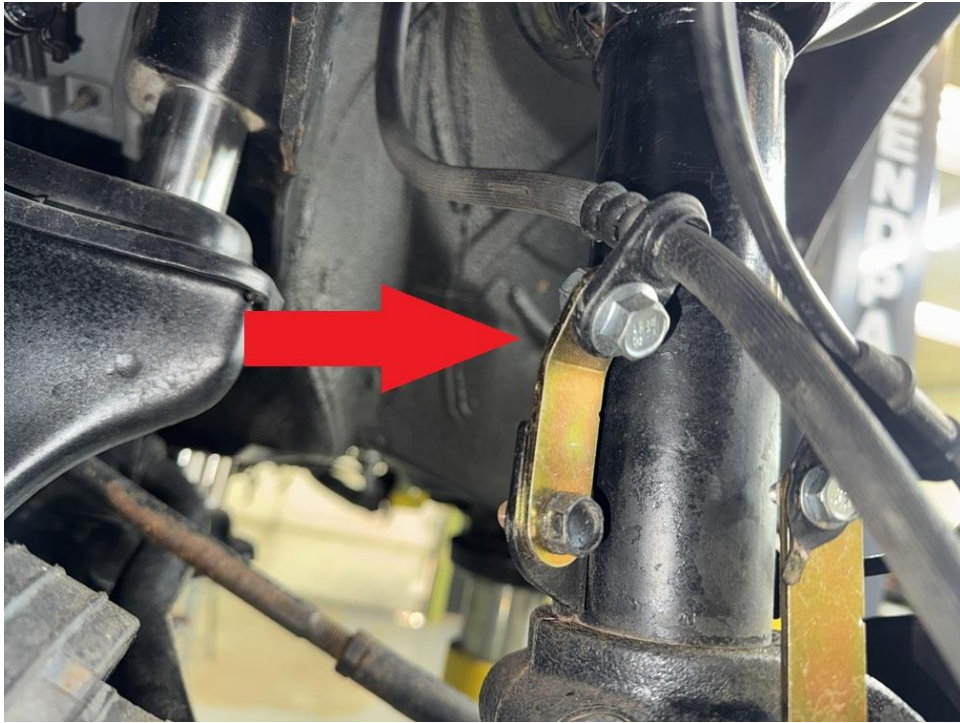


Step 41. Using a pry bar, pull driver side front lower control arm downward to allow the strut to slide back into the knuckle.

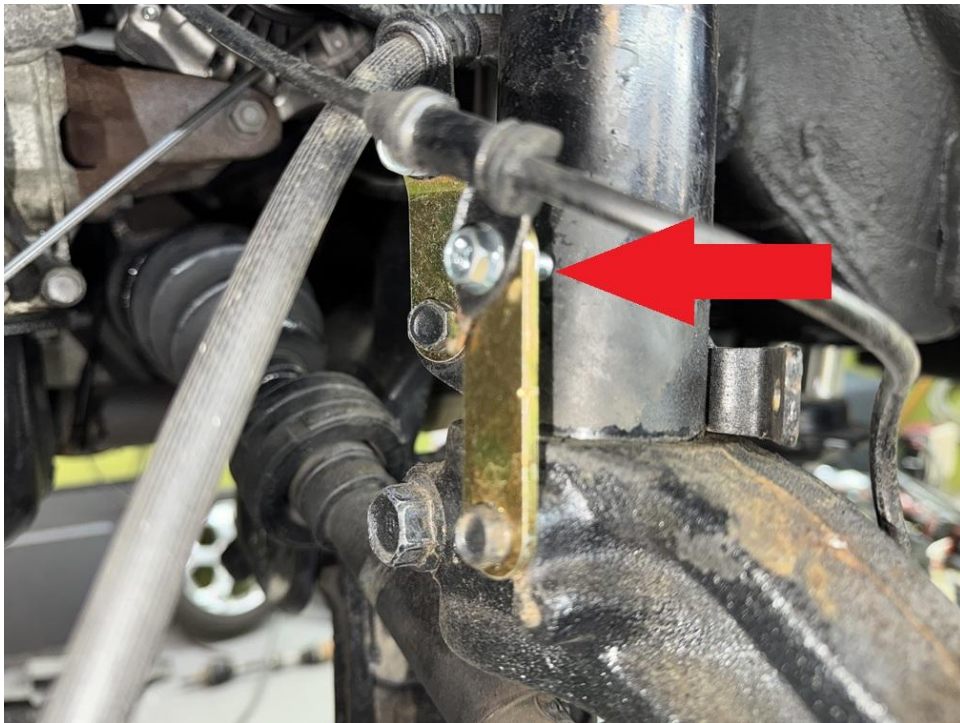
Step 42. Reinstall 17mm bolt holding strut to knuckle.



Step 43. Install brake line bracket as shown:



Step 44. Install ABS wire bracket as shown:



Step 45. Repeat process for passenger side.

Step 46. Reinstall sway bar end links.



Step 47. Reinstall front wheels.

Step 48. Tighten all bolts, double check engine and transmission mounting bolts. Mark bolts with paint pen that have been double checked.

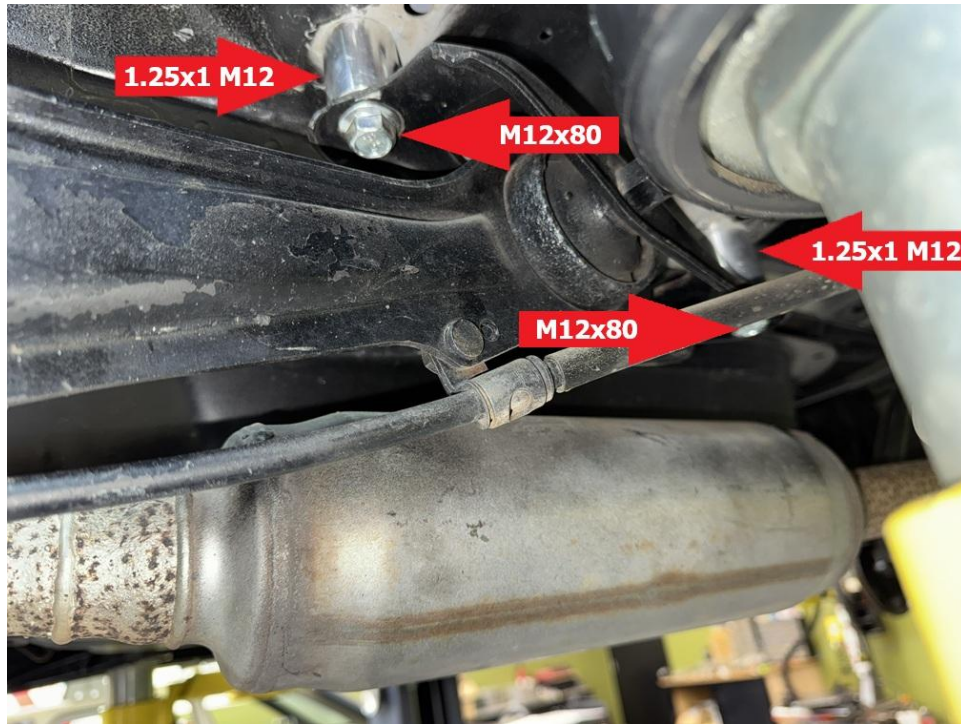
Rear installation:

Step 1. Remove bolts in driver side rear heat shield, remove heat shield.

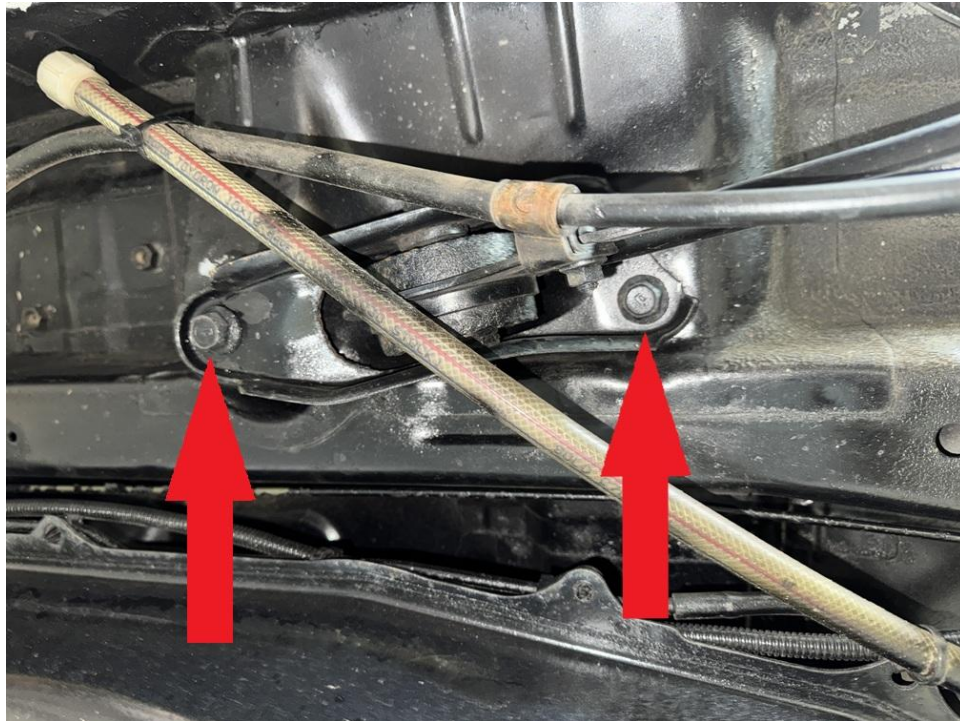


Step 2. Remove bolts holding drivers side trailing arm mounting brackets.

Step 3. Place 1.25x1 M12 spacers between trailing arms and body. Install M12x80 bolts. Torque bolts to 76 ft-lb.

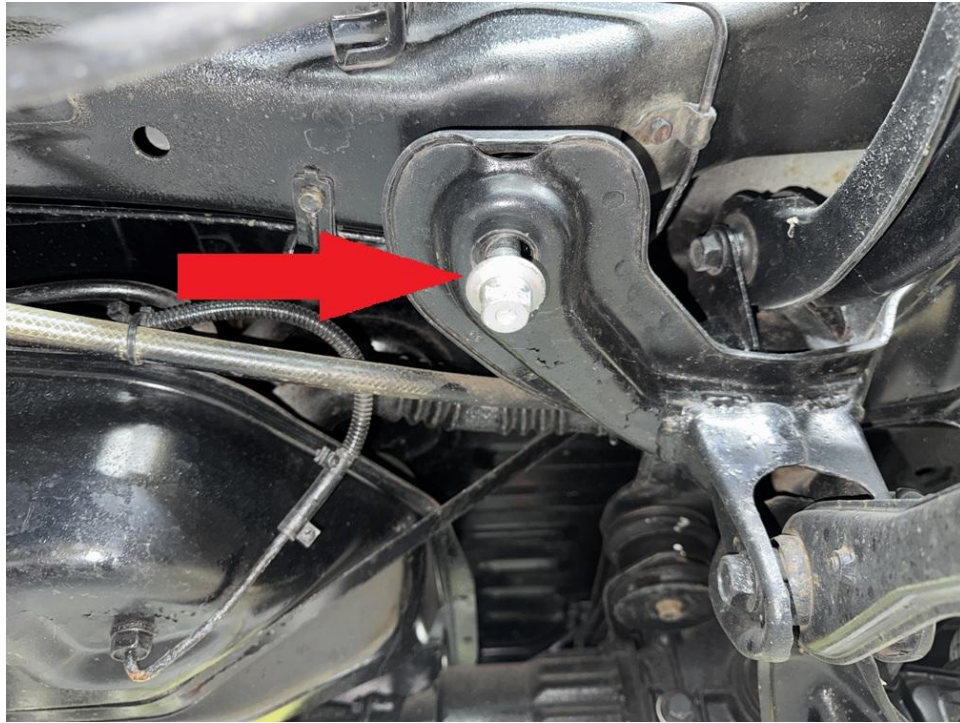


Step 4. Repeat trailing arm spacer installation on passenger side.

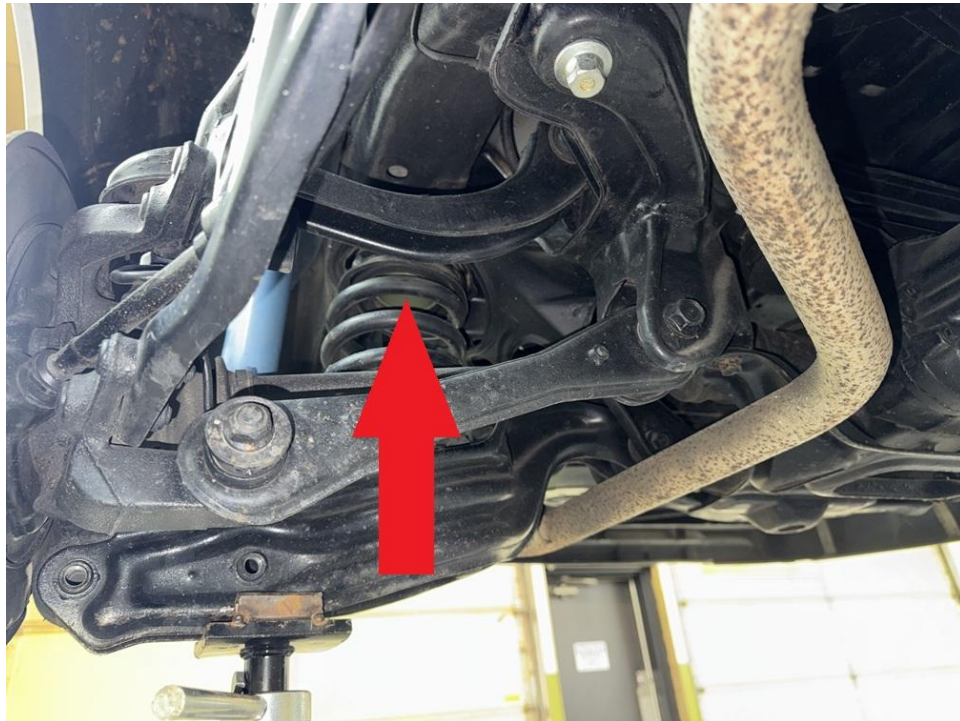


Step 5. Support rear subframe with a floor jack or screw jack.

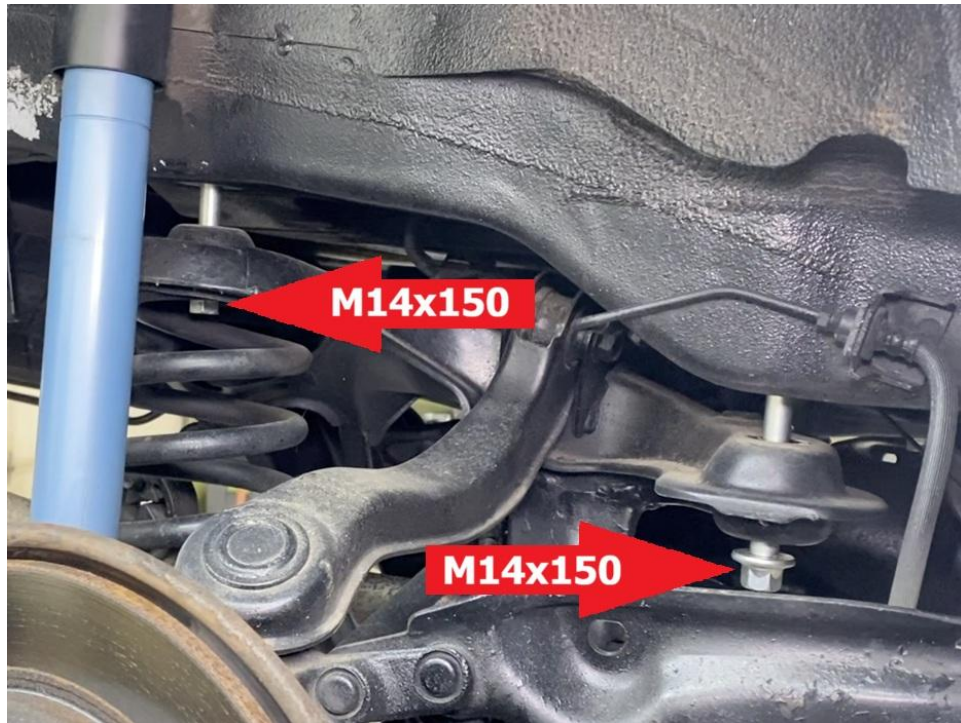
Step 6. Locate and remove "front most" rear subframe bolts and temporarily install M14x150 bolts.



Step 7. Locate the “rear most” subframe bolts inside the rear spring. Using a long extension, remove original bolts and thread in the M14x150 bolts included in the kit. Do not tighten bolts at this time.



Step 8. Carefully lower rear subframe approximately 1 inch.

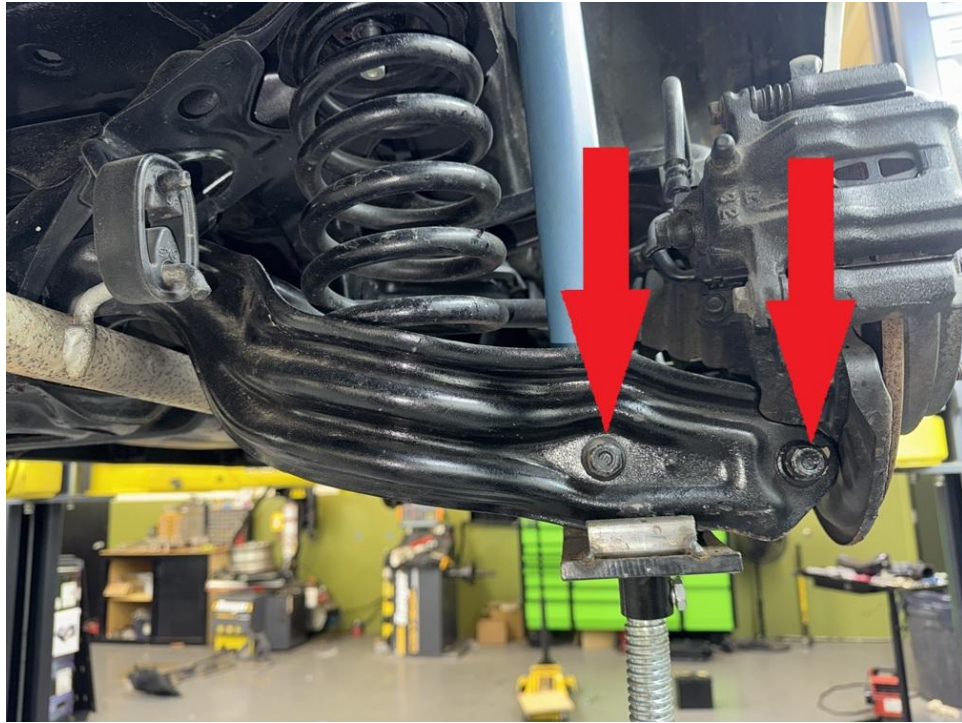


Step 9. Place 2.25x1 M14 spacer one at a time between subframe and body on all four mounting points, installing the M14x150 bolts as you go. Torque all bolts to 110 ft-lb.



Step 10. Support rear lower control arms with a floor jack or screw jack.

Step 11. Remove bolts holding rear shock and rear knuckle to rear lower control arm.



Step 12. Carefully release pressure on spring, remove spring.

Step 13. Locate driver side rear seat recline handle, fully recline rear seat.



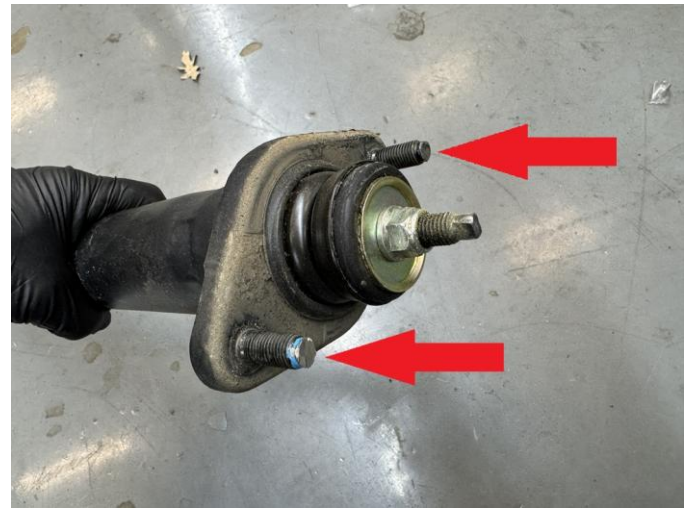
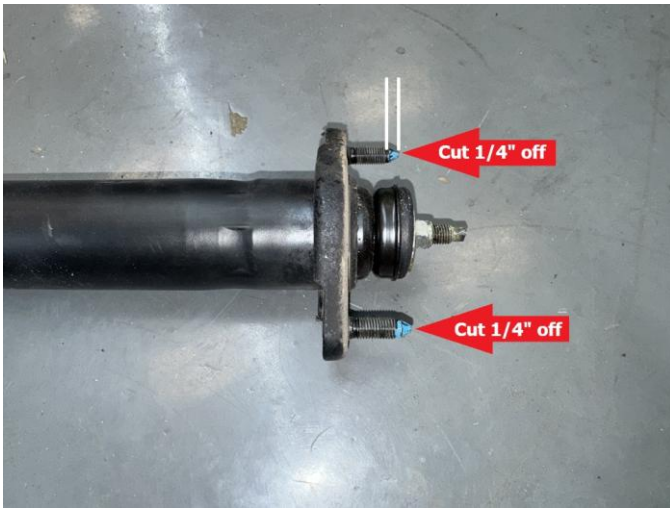
Step 14. Locate rear seat fold handle, fold rear seat up and hang strap from grab bar.



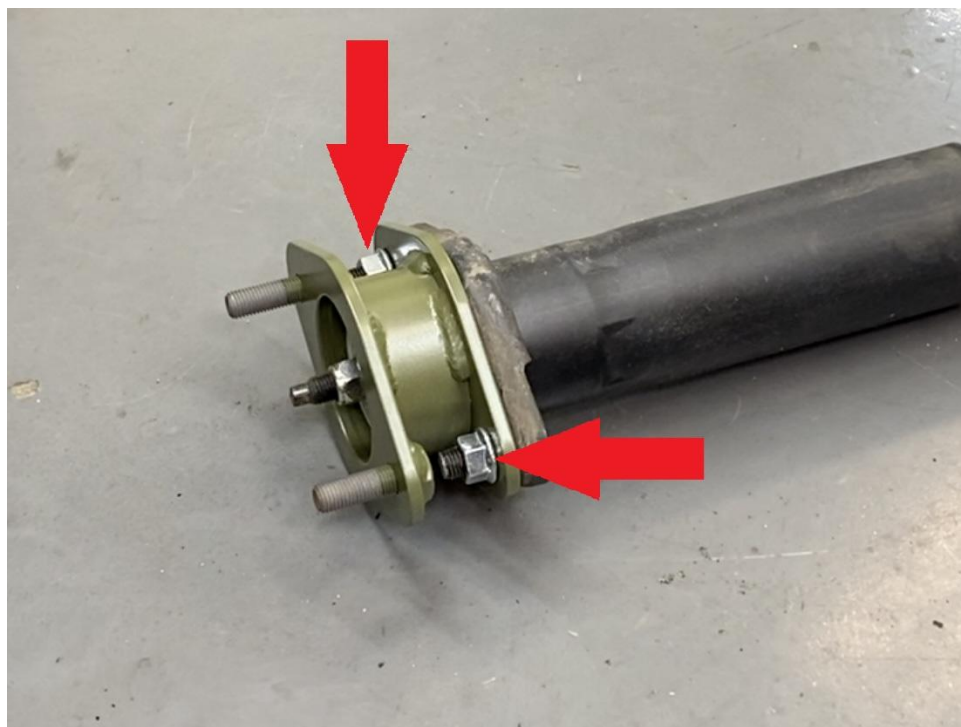
Step 15. Pull carpeting back to reveal driver side rear shock mounting nuts. Remove nuts and have a helper remove the shock from under the car.



Step 16. Using a cutoff wheel or bench grinder, remove approximately $\frac{1}{4}$ (6.4mm) from the end of the studs on the shocks.



Step 17. Attach spacer to shock using hardware included in the kit.



Step 18. Reinstall shock and spacer combo into wheel well using OEM hardware.

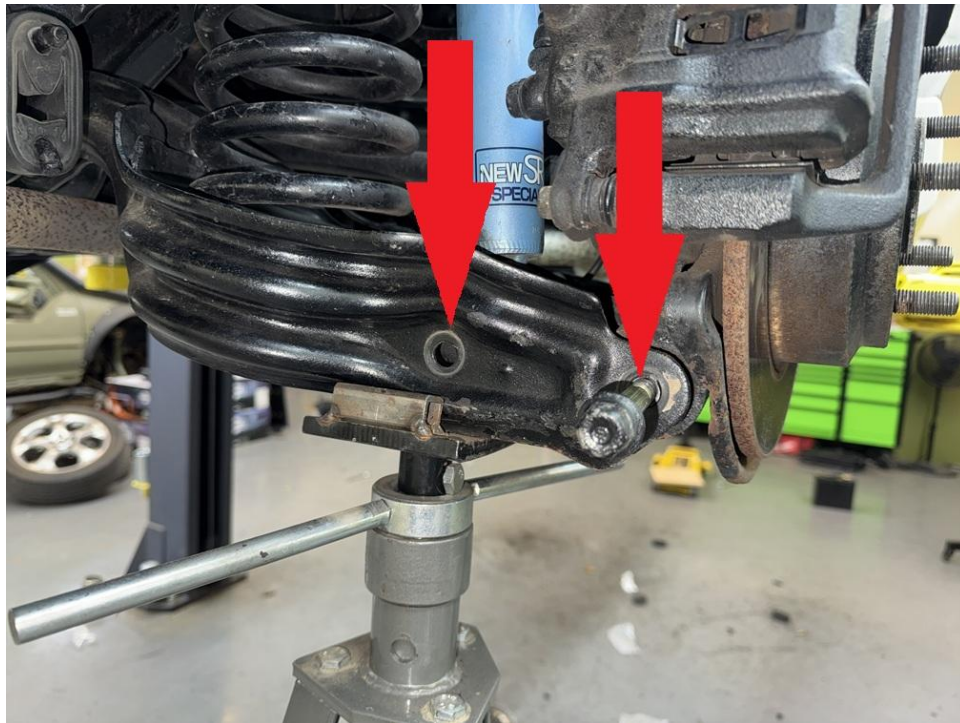
Step 19. Repeat shock spacer installation process on passenger side.

Step 20. Place spacer on top of driver side rear spring as shown:



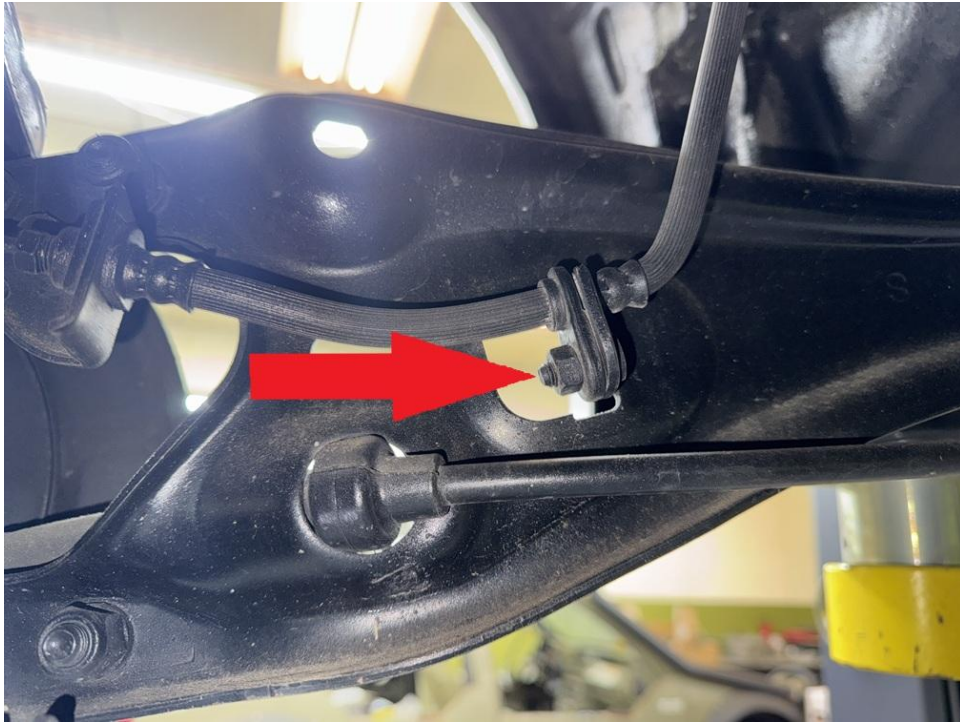
Step 21. Reinstall spring and spacer combo. Be sure to align coil correctly in lower control arm.

Step 22. Using a floor jack or screw jack, compress suspension to align shock and knuckle mounting bolts.

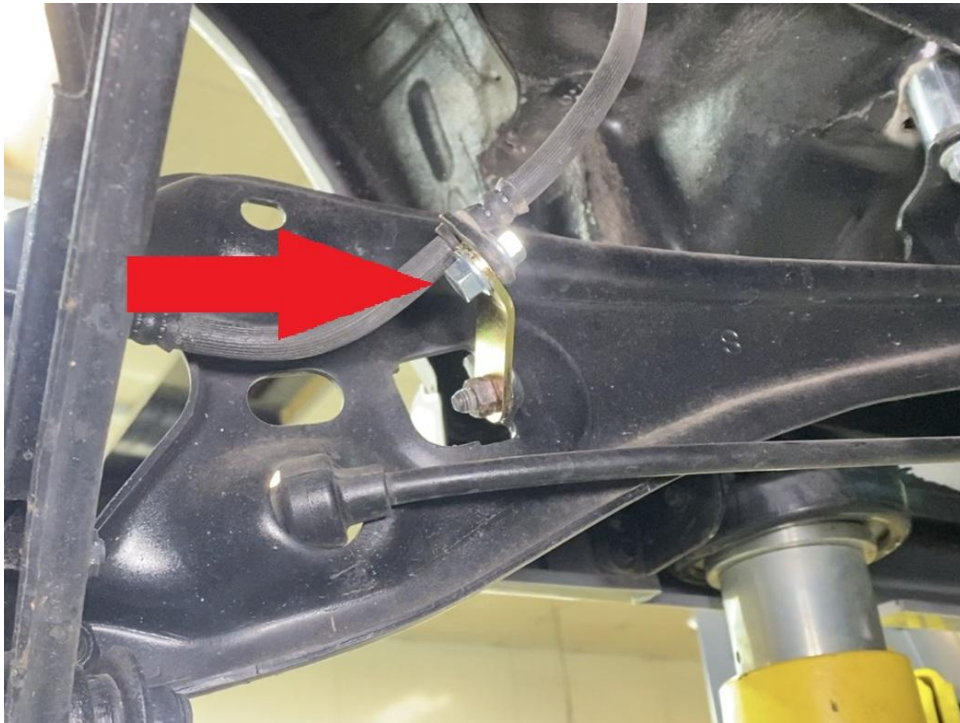


Step 23. Repeat rear lift spacer installation on passenger side.

Step 24. Remove bolt holding rear brake line to driver side trailing arm.

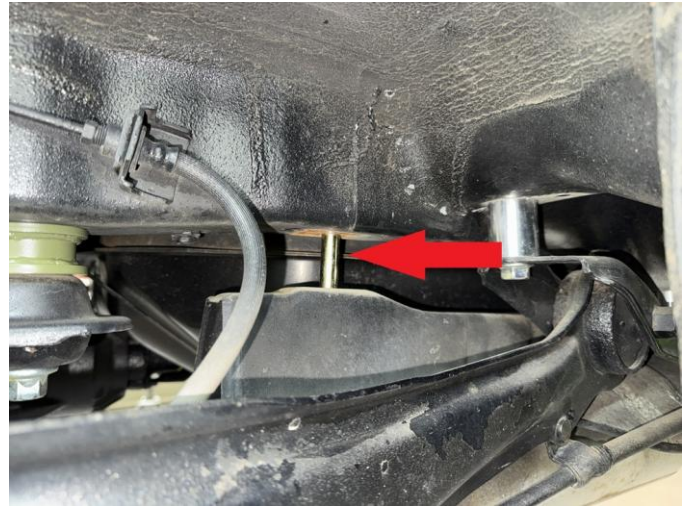
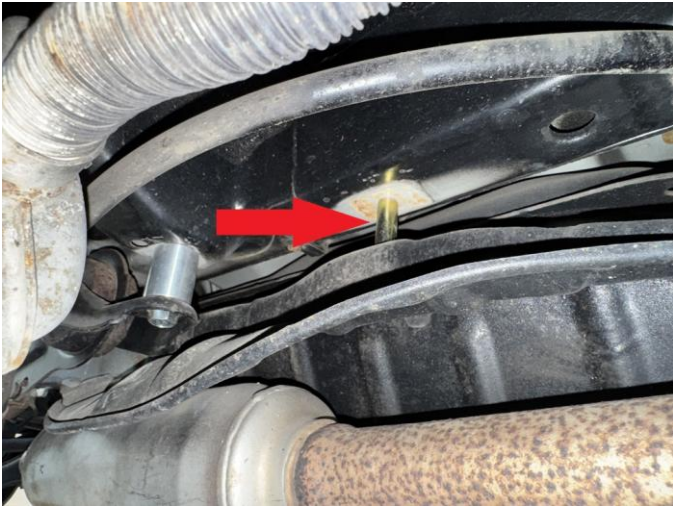


Step 25. Install brake line relocation bracket.



Step 26. Repeat brake line bracket installation on passenger side.

Step 27. Using the 0.5x1 M6 spacers and M6x40 bolts, reinstall rear heat shield.



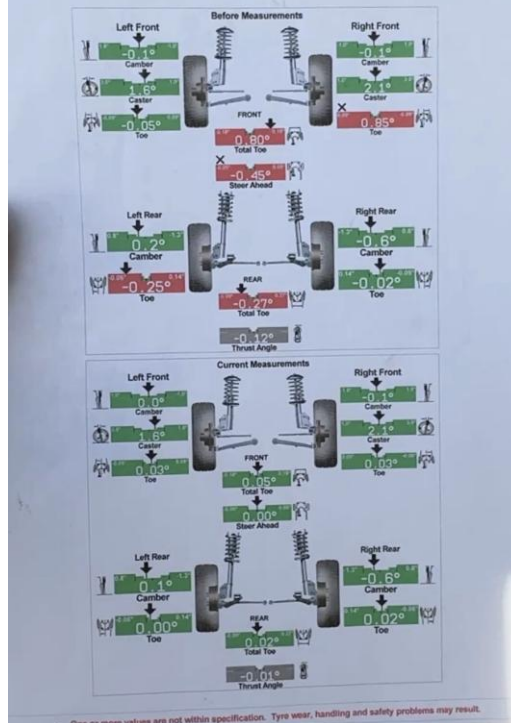
Step 28. Double check all nuts and bolts in rear suspension. Mark each bolt with paint pen once check is complete.

Step 29. Locate and remove exhaust pipe hangers under vehicle. Install longer hangers. The hanger under the rear subframe DOES NOT get replaced with a longer one.



Step 30. Double check ALL bolts.

Step 31. Get an alignment done.



Step 32. Find some trails!



IMPORTANT: Installing a lift kit will change the suspension geometry and will require a 4 wheel alignment.

Warning: Failure to follow the procedures in these installation instructions may result in unsafe handling characteristics, damage to vehicle, or loss of control.

For tech support, please call 1-844- HRG LIFT (474-5438) from 8-4:30 PM EST Mon-Thu 8-3:30 PM Fri or email us 24/7 at support@hrgoffroad.com.

This product is intended for off-road use only!!

Copyright HRG Offroad 2026

1996-2001 Honda STEPWGN checklist

- RID0625F-2.5 (1L, 1R)
- STEPWGN 1.0R (2)
- ODY9598 RSE (2)
- 1.5" SSE (1)
- 1.25x1.5 M12 (9)
- 2.25x1 M14 (4)
- 1.5 H spacers (2)
- 1.25x1.5 M14 (8)
- BLB-2 (1 pack of 2)
- bent BLB-2 (2 packs of 2)
- Wiring bracket (1 BLB1, 1 M6x16, 1 M6 nut)
- 1 Bolt Pack :**
- M14x150 (4)
- M14x135 (4)
- M14x125 (4)
- M12x60 (2)
- M12x80 (6)
- M10x60 (4)
- Extended exhaust hangers (5 HONDA)
- 0.5x1/M6x40 (1 pack of 2)
- 1.5" Foam seal
- HRG koozie
- HRG T-shirt
- Ruler
- Instruction Card