



**OUTBACK**



### **2022-2024 2" lift kit installation guide**

*Professional installation is recommended*

#### **IMPORTANT!**

Lifting and modifying the suspension on your vehicle may result in drive line vibrations, damaged bushings, erratic handling characteristics, and shortened suspension component life. HRG Offroad recommends the following:

- Checking and/or replacing worn drive axles with new parts, not remanufactured.
- Checking and/or replacing all worn factory rubber bushings with urethane bushings, such as Prothane.
- Checking and/or replacing worn shock absorbers and bump stops.
- Performing a 4 wheel alignment after working on suspension components.

**Lift kits may not be legal for use on public highways in your area. Please check local laws before installing!!**

#### **WARNING!**

***Lifted vehicles are more prone to rolling over.***

Some HRG Offroad products are designed to improve off-road capabilities. Modifying the suspension of your vehicle may result in handling characteristics that are different from a factory equipped vehicle. Extreme care must be used to prevent a rollover or loss of control. Always operate your modified vehicle at a reduced speed to ensure your ability to maintain control under all driving conditions. Driving your vehicle in an unsafe manner may result in serious injury or death. HRG Offroad lift kits are designed and tested to work together. HRG Offroad does not recommend combining this lift kit with any other type of suspension or body lift. Always wear your seat belt.

*Professional installation is recommended*

#### **Included in the kit:**

- 2 2" (51mm) offset lift spacers (front) 5651
- 2 2" (51mm) lift spacers (rear) 5662
- 6 M8 nuts (front)
- 4 M10 nuts (rear)
- 2 14mm 1.5° camber adjustment bolts (optional)
- 4 2.75x2 M14 "puck" spacers (rear subframe)
- 6 1x2 M10 spacers (rear subframe brackets)

4 M14x220 bolts (rear subframe)

4 M10x70 bolts (rear subframe)

2 Front brake line brackets

2 Rear brake line brackets

4 Extended muffler hangers

**Tools required:**

Floor Jack or screw jack, lug wrench, metric socket set up to 21mm, metric wrench set up to 18mm, common pliers, cutoff wheel or plastic cutting saw, torque wrench.

***NOTE TO INSTALLER: Installing this kit requires permanent modification to the plastic panels under the gas tank.***

***Approximate installation time: 4 hours***

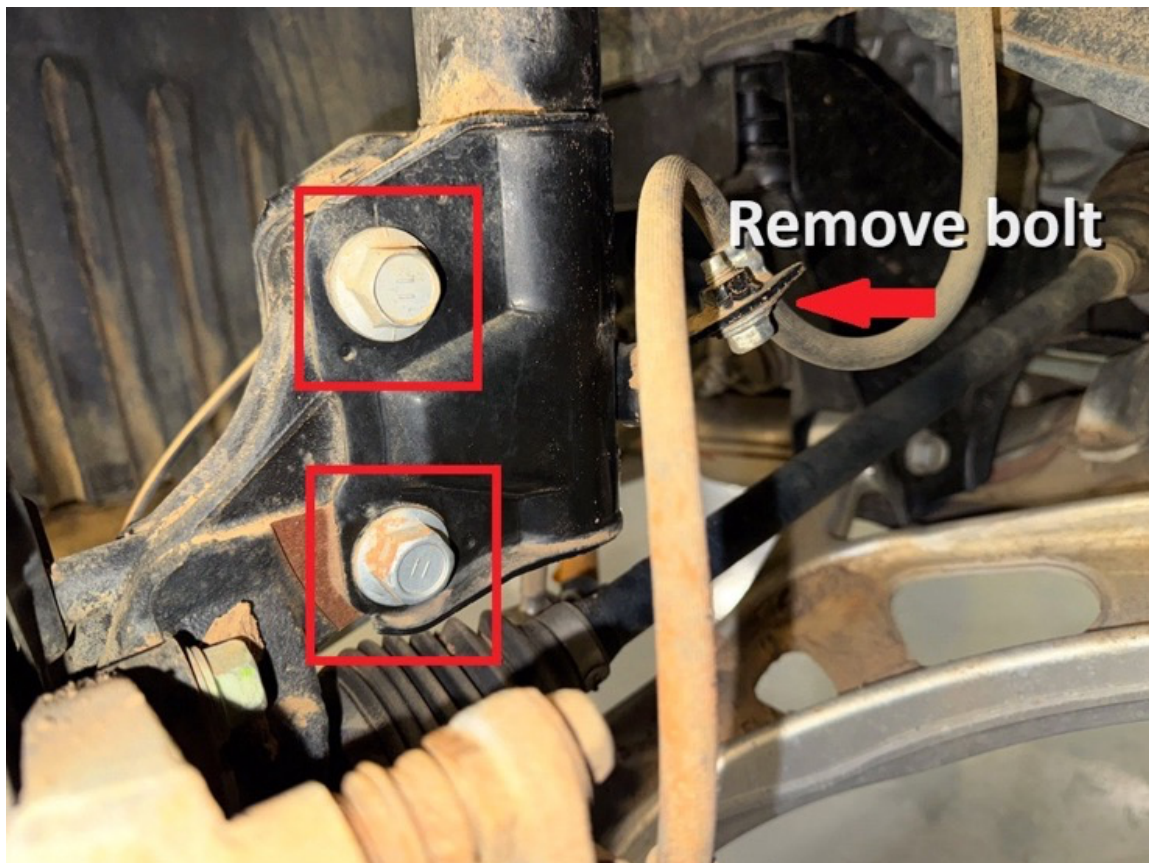
**Front installation:**

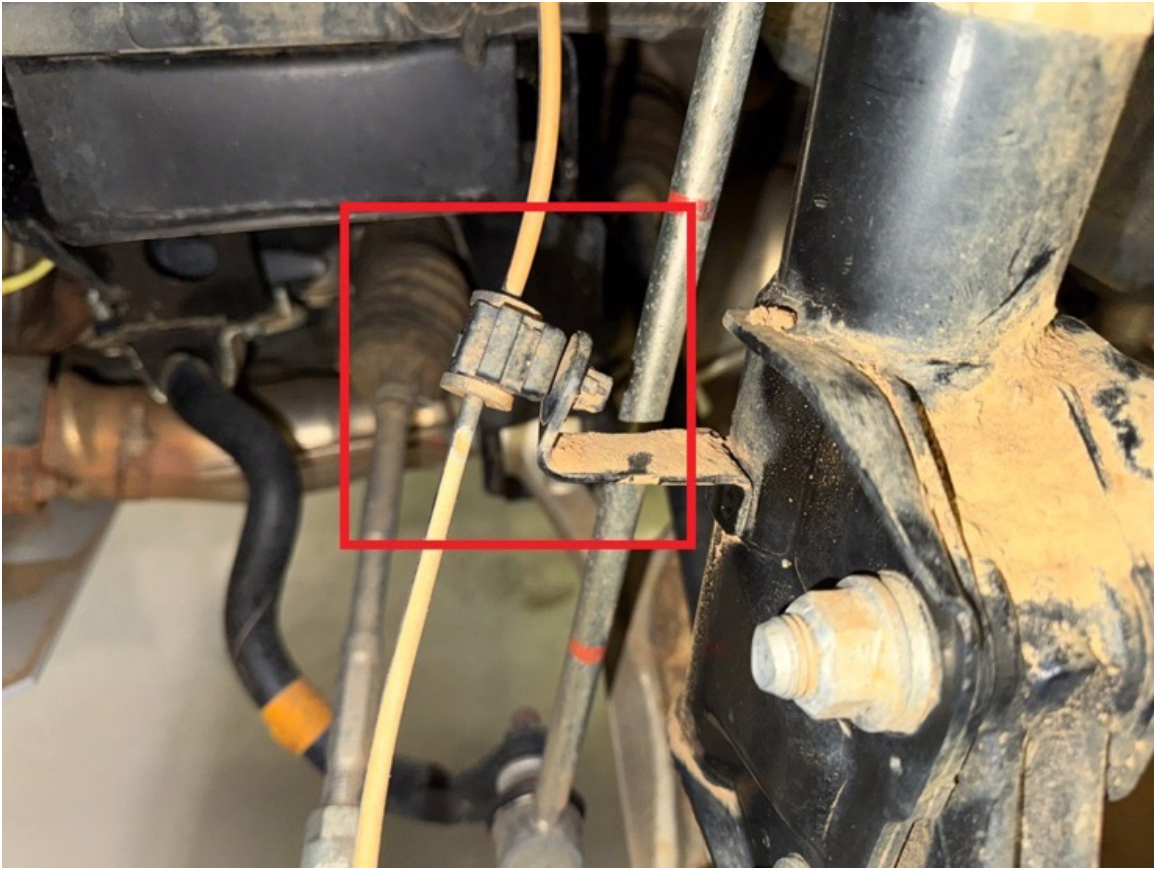
Step 1. Lift vehicle and support with jack stands.

Step 2. Remove wheels.

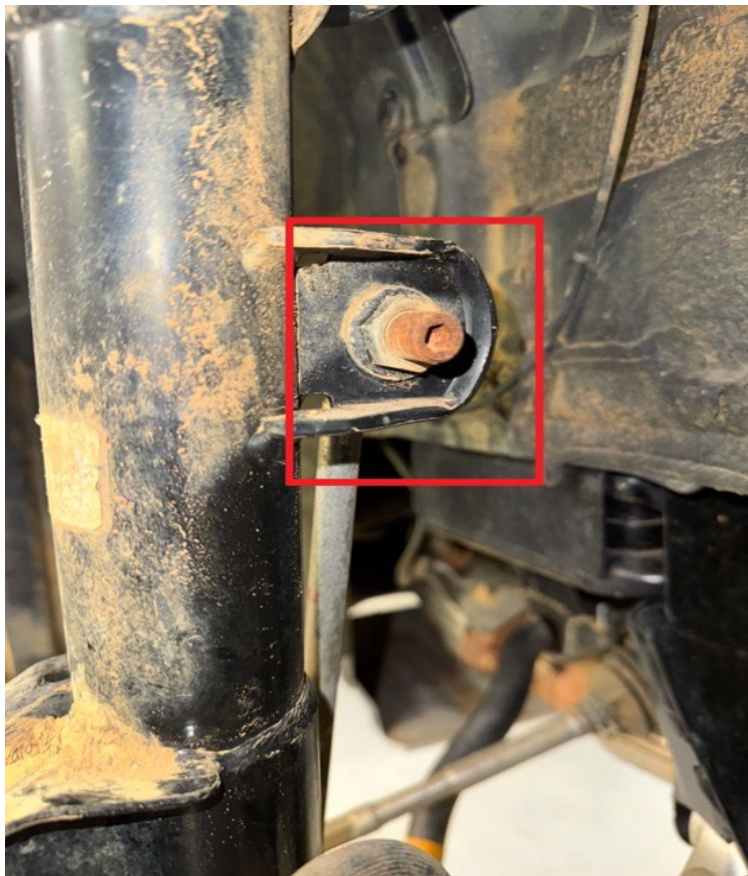
Step 3. Remove bolts holding the brake line and ABS wiring to the driver side strut. (see photo below)

Step 4. Remove 2 main bolts in bottom of strut. (save 1 bolt, the other will be replaced by camber bolt provided in the kit.



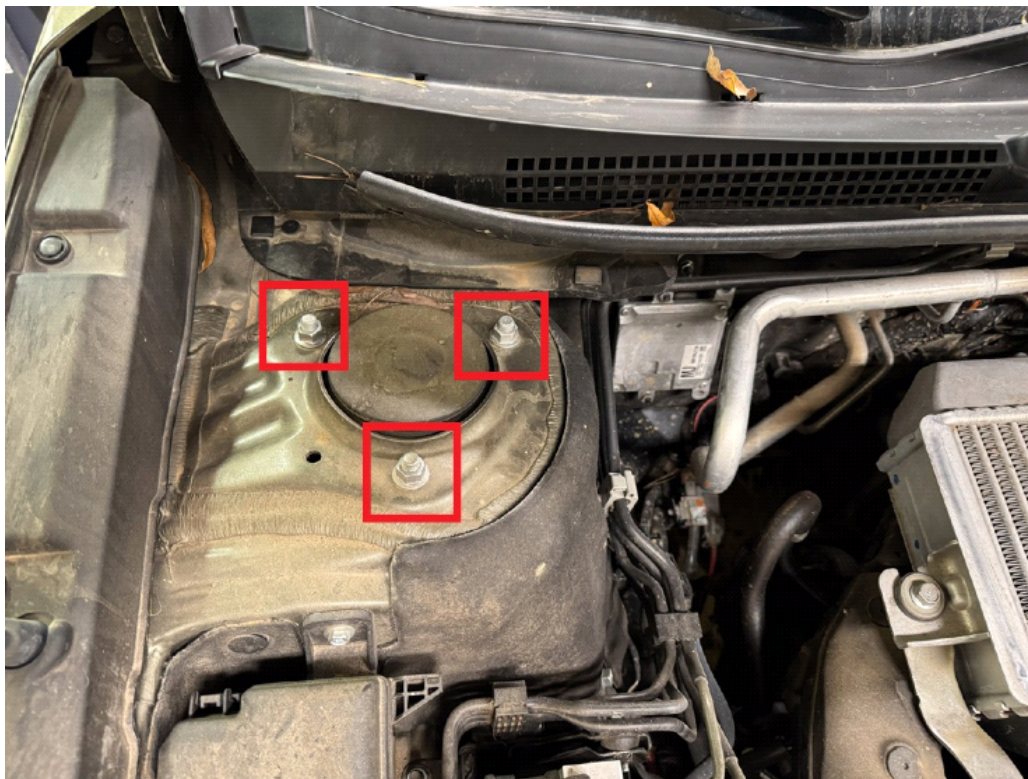


Step 5. Remove sway bar link from strut. (save hardware) You will not reconnect the sway bar link until both sides are lifted.





Step 6. Remove 3 M8 nuts from strut top to allow strut to drop out. (save hardware).



Step 7. Mount driver side (L) spacer to strut using M8 nuts provided in the kit.

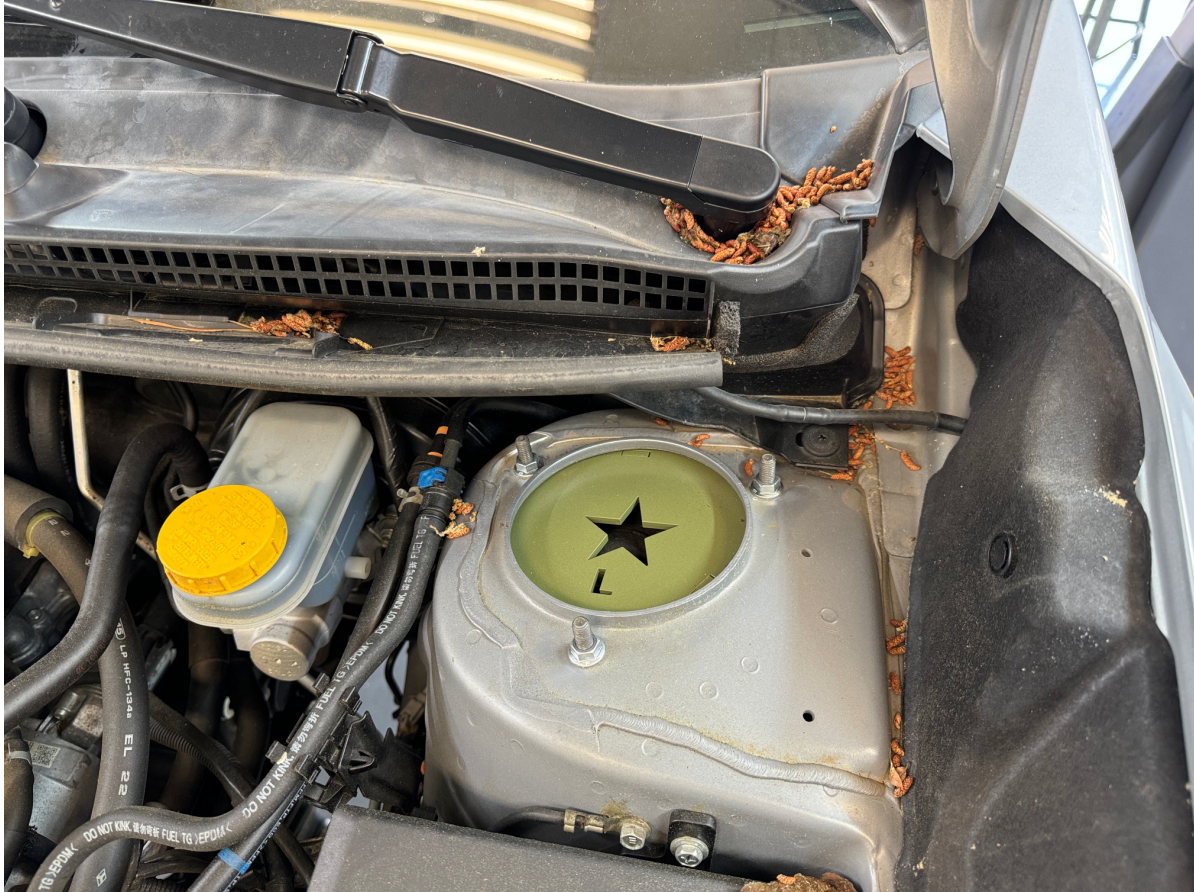




**NOTE: The spacers in this kit are offset to maintain proper camber/caster alignment, and are marked L for driver side and R for passenger side.**

Step 8. Turn the top of the strut so that the star is pointing toward the back of the car. See photo below.

Step 9. Slide strut back into place and mount to vehicle using original hardware saved from step 5. The star should be right side up as viewed standing in front of the vehicle. The spacers are marked L and R, designating L for Driver side and R for Passenger side (U.S. Models). Be sure to verify at this time that the spacers are on the correct side.



Step 10. Mount ABS and brake lines back to strut, use BLBL (L shape bracket) to relocate front brake line.

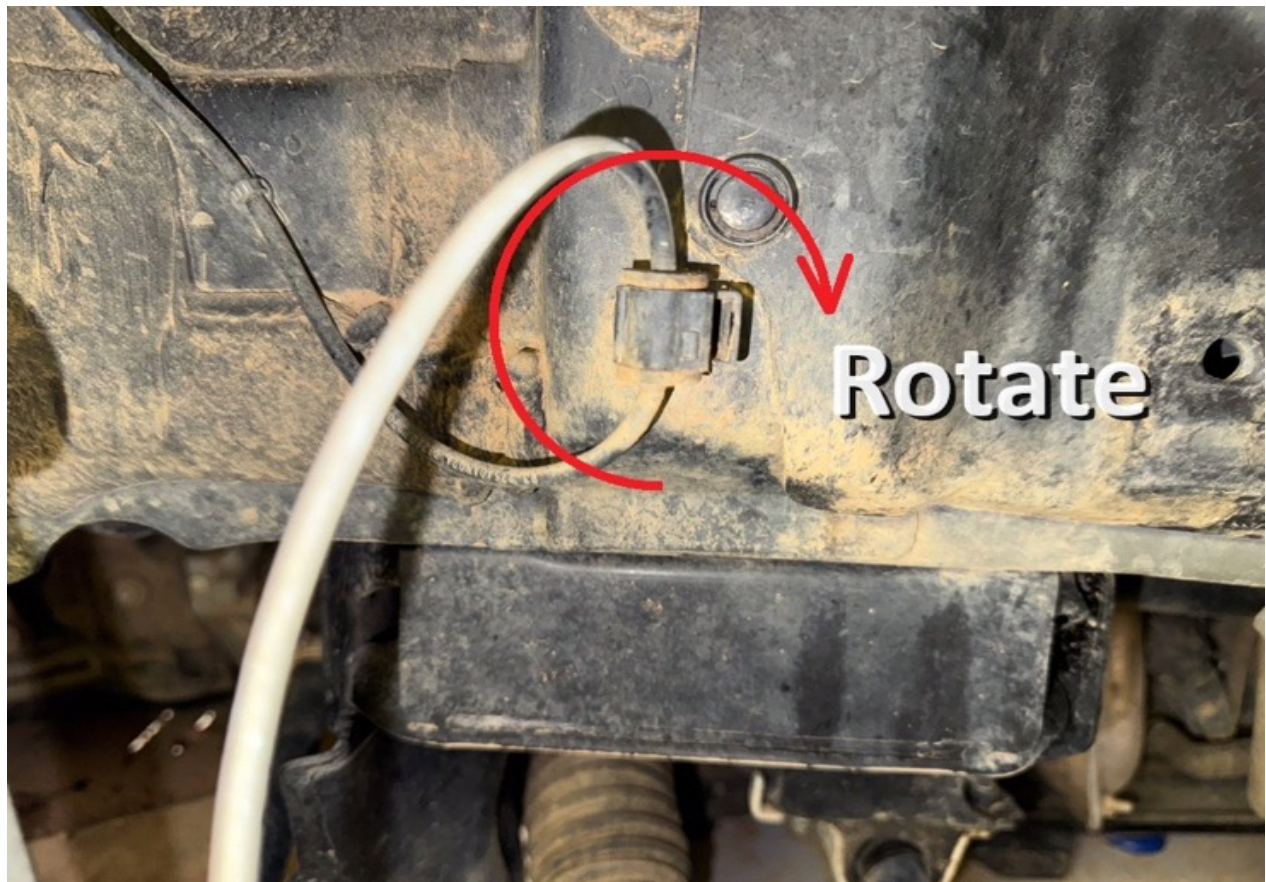


Step 11. Using a floor jack, lift the lower arm and brake assembly until the main strut bolts line up.

Step 12. Reinstall lower main strut bolt in bottom hole, install camber bolt in TOP HOLE.

Step 13. Rotate ABS wiring mount 180° so that the wire has sufficient slack. (see photo)





Step 14. Repeat steps 7-13 for passenger side.

Step 15. Reinstall sway bar links on both sides at this time.



Step 16. Torque bolts to factory specifications (refer to OEM repair manual)

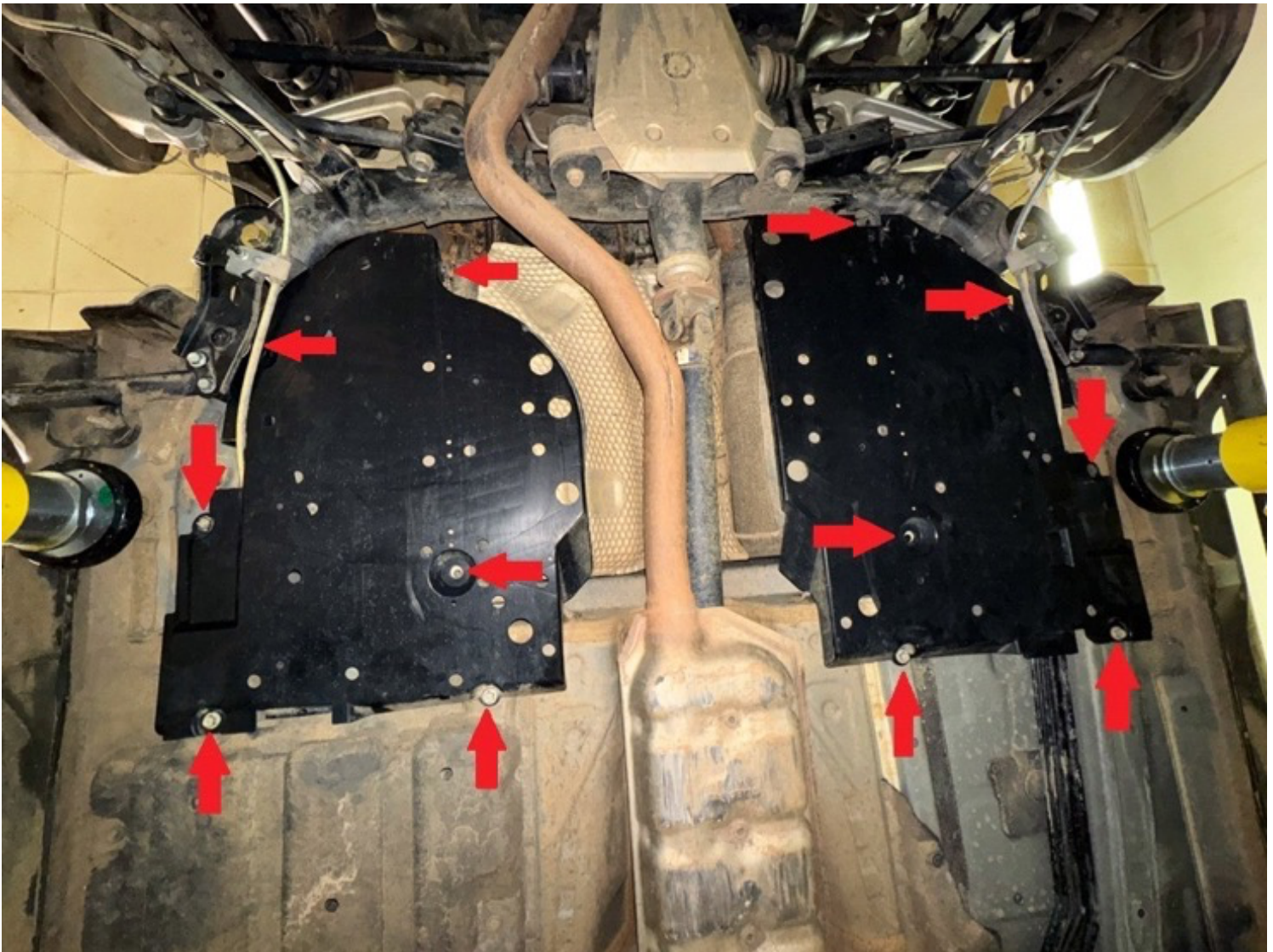
Step 17. Reinstall wheels.

### **Rear Installation:**

Step 1. Lift vehicle and support with jack stands.

Step 2. Remove wheels.

Step 3. Remove bolts and plastic clips holding plastic gas tank covers. (see photo) These will be modified later.



Step 4. Support rear differential with floor jack or screw jack.

Step 5. Remove 2 14mm bolts holding driver side subframe stiffener bracket to body.

**NOTE: Vehicles equipped with the ADF rock sliders will not use 4 1x2 M10 aluminum spacers. Stiffener bracket will relocate below the rock slider mount. (See photo)**





Step 6. Remove front-most main subframe bolts, temporarily replace OEM bolts with M14x220 bolts provided in the kit. These will keep the subframe in line while being lowered.

Step 7. Remove rear most 2 main subframe bolts, as well as 2 14mm bolts holding subframe stiffener brackets in place.

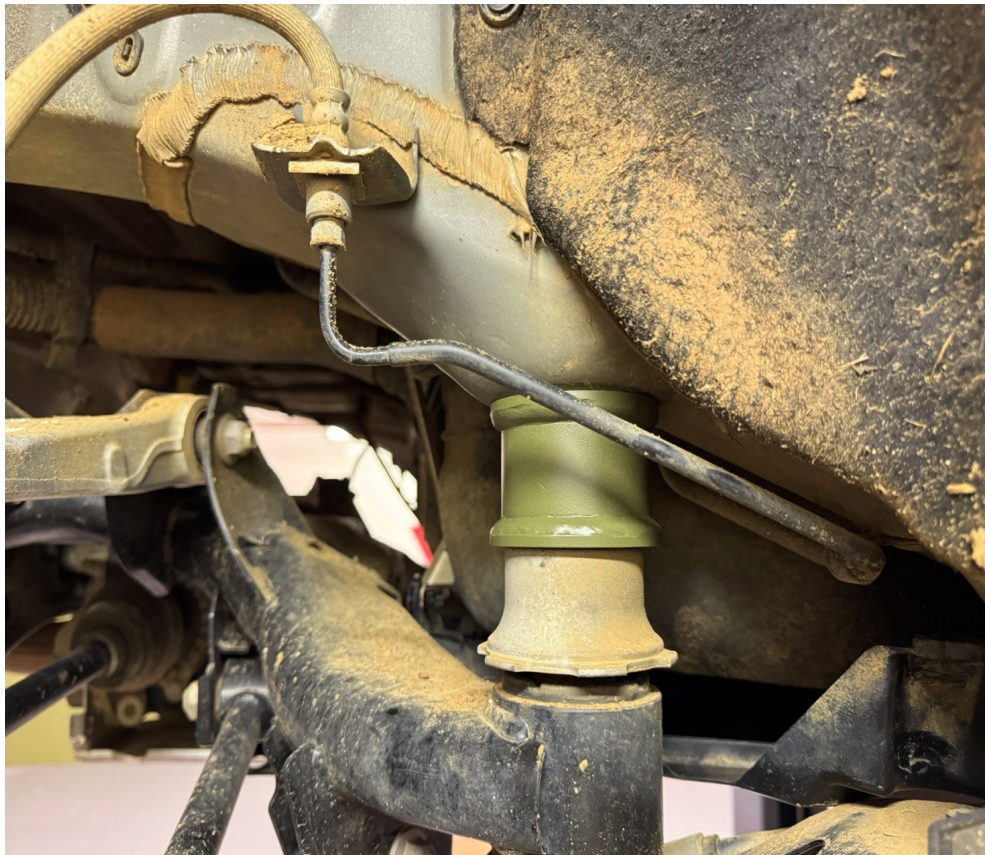
Step 8. Carefully lower rear subframe about 2 inches.

Step 9. Install 2 2.75x2 M14 spacers between subframe and body, as well as 2 1x2 M10 spacers between subframe bracket and body. (one on each side) Use M14x220 bolts and M10x70 bolts. (see photo)





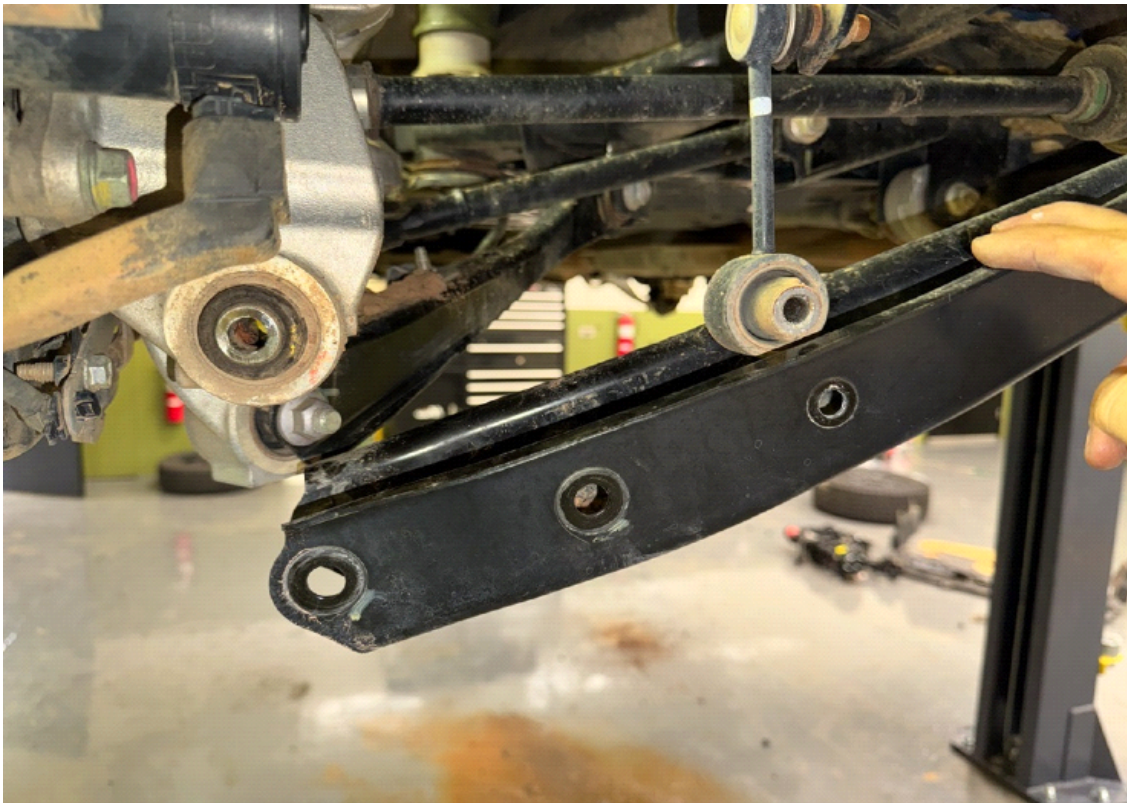
Step 10. Remove M14x220 bolts temporarily installed in step 6. Place 2 2.75x2 M14 spacers between subframe and body, along with 4 1x2 M10 spacers between stiffener brackets and body. Reinstall M14x220 bolts. **You will not use the 1x2 M10 spacers if vehicle is equipped with ADF rock sliders.** Install M10x70 bolts in brackets. (see photos)







Step 11. Remove bolts holding sway bar link, rear strut, and wheel hub to driver side lower control arm. (see photo)



Step 12. Remove brake line from hub to prevent tension on the hose while lowering wheel hub.



Step 13. Pull up cargo liner to gain access to rear strut bolts. Remove 2 nuts holding rear strut to vehicle and remove strut. (Save hardware)



Step 14. Mount the spacer to the strut as shown.

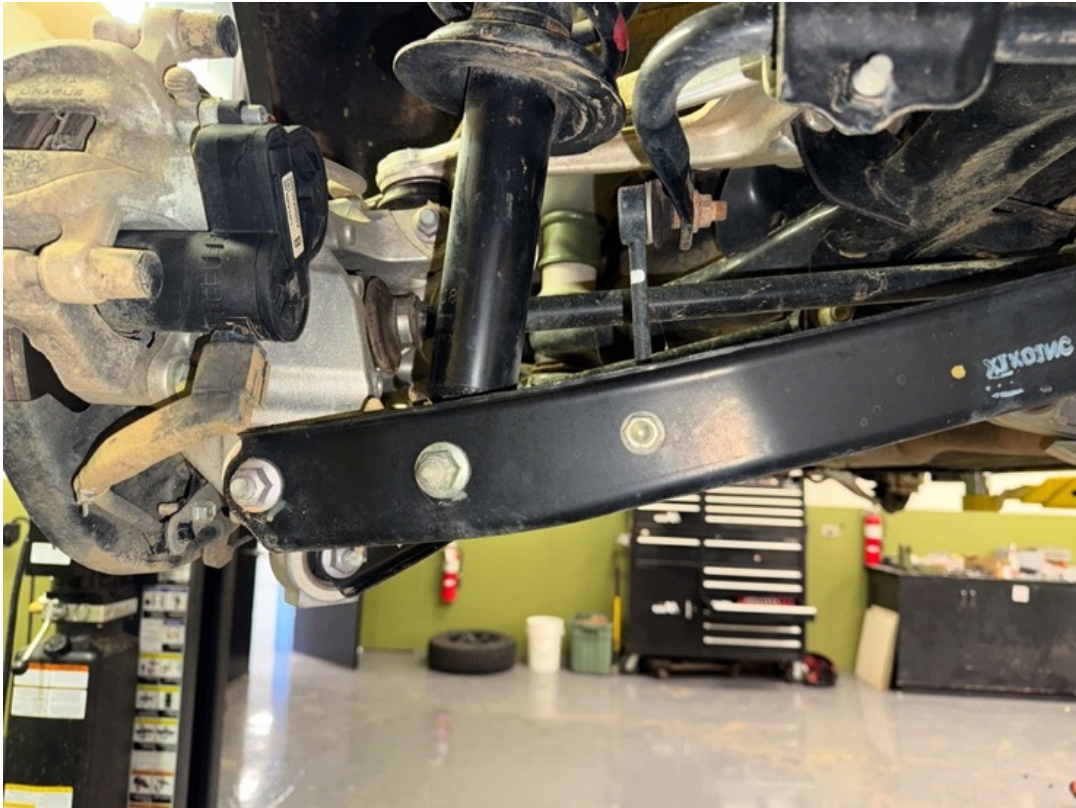


Step 15. Slide strut back into vehicle and install the strut assembly using the hardware provided.



Step 16. Using a floor jack, lift the lower control arm until the **rear strut** lines up in the mounting hole, install mounting bolt.

Step 17. Repeat step 16 until the **rear lower control arm** lines up with the wheel hub, install mounting bolt.



Step 18. Install rear brake line extension bracket in factory brake line mounting location. Mount brake line as shown:

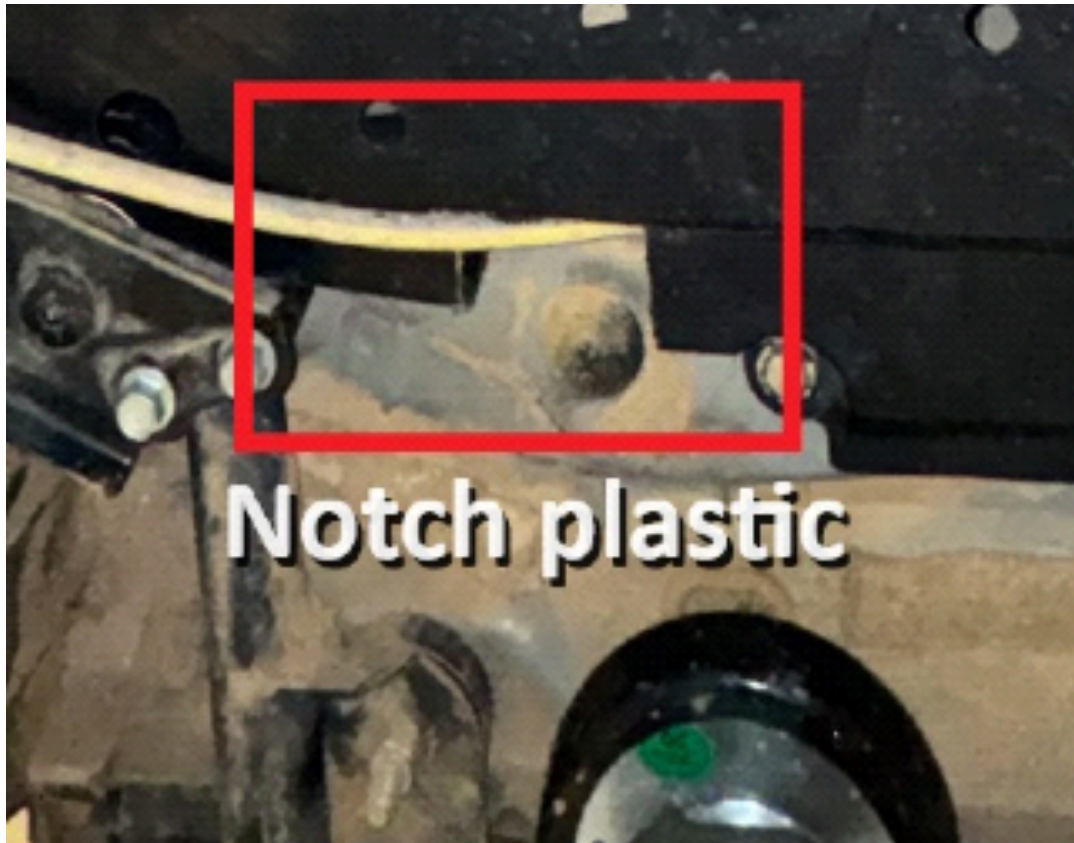




Step 19. Replace OEM muffler hangers with extended ones provided in the kit.

Step 20. Repeat steps 11-19 for passenger side.

Step 21. Modify plastic gas tank covers as shown in photos to allow parking brake cables to pass:







Step 22. Reinstall gas tank covers in reverse order of removal.

Step 23. Referring to factory service manual, torque all bolts to spec.

Step 23. Reinstall wheels.

Step 24. Get a professional alignment.



**Note: Installing lift spacers will change the suspension geometry and will require a 4 wheel alignment.**

**Warning: Failure to follow the procedures in these installation instructions may result in unsafe handling characteristics, damage to vehicle, or loss of control.**

**For tech support, please call 1-844- HRG LIFT (474-5438) from 8-4:30 PM EST Mon-Thu 8-3:30 PM Fri or email us 24/7 at [support@hrgoffroad.com](mailto:support@hrgoffroad.com).**

***This product is intended for off-road use only!!***

Copyright HRG Offroad. 2026