



Cayenne

2002-2010 4-inch lift kit installation guide

Professional installation recommended

IMPORTANT!

Lifting and modifying the suspension on your vehicle may result in drive line vibrations, damaged bushings, erratic handling characteristics, and shortened suspension component life. HRG Offroad recommends the following:

- Checking and/or replacing worn drive axles with new parts, not remanufactured.
- Checking and/or replacing all worn factory rubber bushings with urethane bushings, such as Prothane.
- Checking and/or replacing worn shock absorbers and bump stops.
- Performing a 4 wheel alignment after working on suspension components.

Lift kits may not be legal for use on public highways in your area. Please check local laws before installing!!

WARNING!

Lifted vehicles are more prone to rolling over.

Some HRG Offroad products are designed to improve off-road capabilities. Modifying the suspension of your vehicle may result in handling characteristics that are different from a factory equipped vehicle. Extreme care must be used to prevent a rollover or loss of control. Always operate your modified vehicle at a reduced speed to ensure your ability to maintain control under all driving conditions. Driving your vehicle in an unsafe manner may result in serious injury or death. HRG Offroad lift kits are designed and tested to work together. HRG Offroad does not recommend combining this lift kit with any other type of suspension or body lift. Always wear your seat belt.

Recommended tire/wheel sizes:

255/65/17 (30.0")

265/65/17 (30.5")

265/70/17 (31.5")

255/60/18 (30.0")

265/60/18 (30.5")

265/65/18 (31.5")

265/55/19 (30.5")

265/60/19 (31.5")

Be sure to check fitment prior to installation! These sizes are only suggestions. HRG is not responsible for improperly

fitted wheels/tires.

Included in the kit:

2 2.5" front lift spacers
8 M8x50 bolts (front lift spacers)
8 M8x25 bolts (front lift spacers)
16 M8 nuts (front lift spacers)
8 M8 nuts (rear lift spacers)
2 2.5" rear lift spacers
2 Engine cradle spacers
2 transmission crossmember spacers
2 3.5x1 M14 spacers (front subframe)
4 3.5x1 M14 spacers (rear subframe)
2 M14x125 bolts (front subframe)
2 M14x135 bolts (front subframe)
2 M14x160 bolts (front subframe)
4 M10x100 bolts (transmission crossmember)
4 M14x160 bolts (rear subframe)
2 M8x50 bolts
2 0.75x0.5 M8 spacers (exhaust mount)
4 0.75x1 M8 spacers (muffler mount)
4 M8x50 bolts (muffler mount)

Tools required:

Floor Jack or lift, lug wrench, metric socket set to 24mm, swivel socket set to 18mm, socket extensions, metric wrench set to 24mm, panel removal tool, pry bar, torque wrench and heavy hammer.

Approximate installation time 6-7 hours

Skill level: Moderate

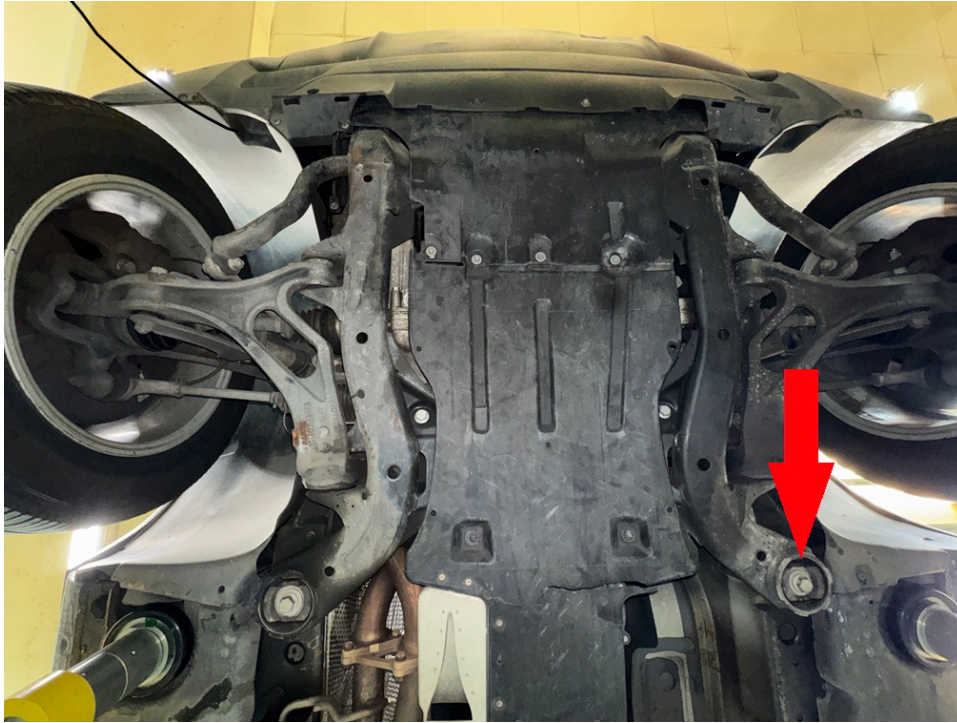
SCAN FOR INSTALLATION VIDEO:



Front installation

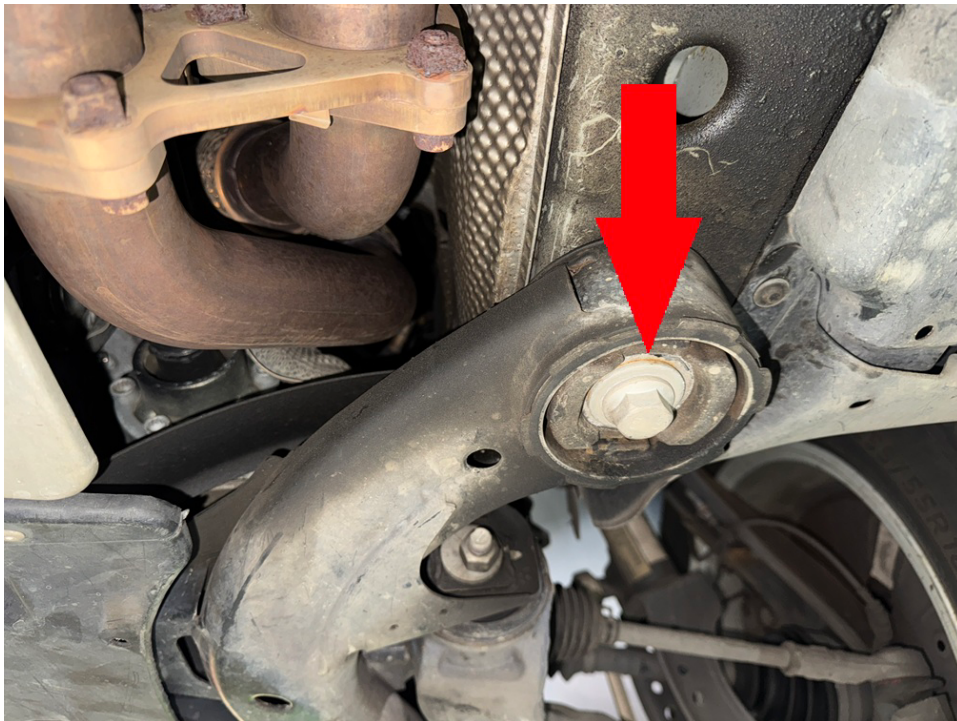
Step 1. Lift vehicle and support with jack stands.

Step 2. Locate and remove “rear most” driver side bolt on front subframe. (see photo)



Step 3. Temporarily thread in a M14x135 bolt.

Step 4. Repeat process on passenger side.



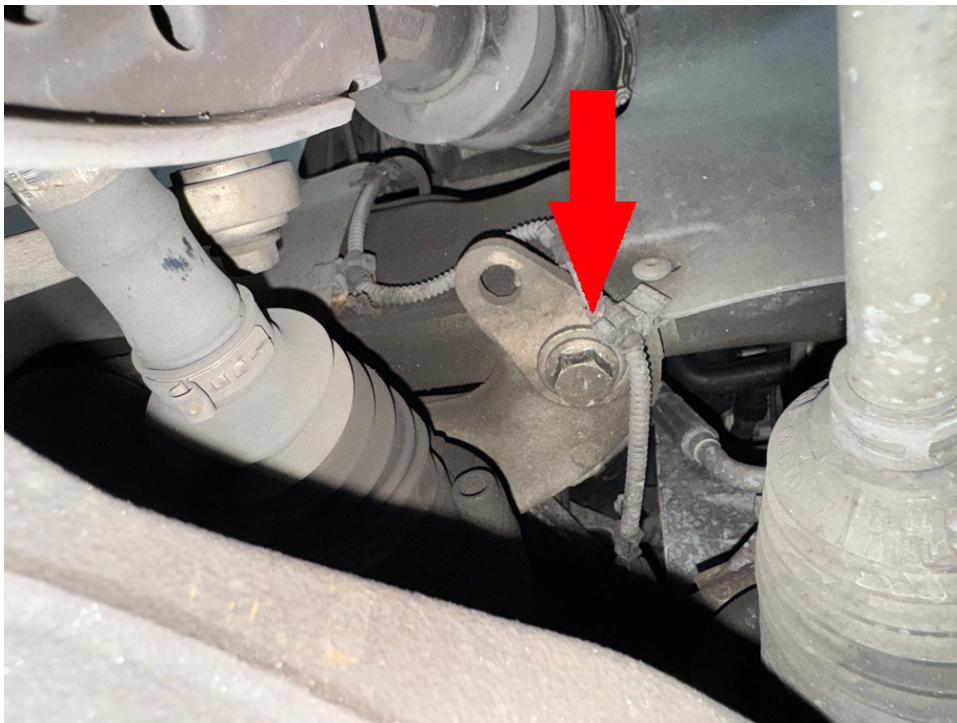
Step 5. Locate and remove “front most” driver side bolt on front subframe. (see photo)

Step 6. Temporarily thread in a M14x160 bolt.

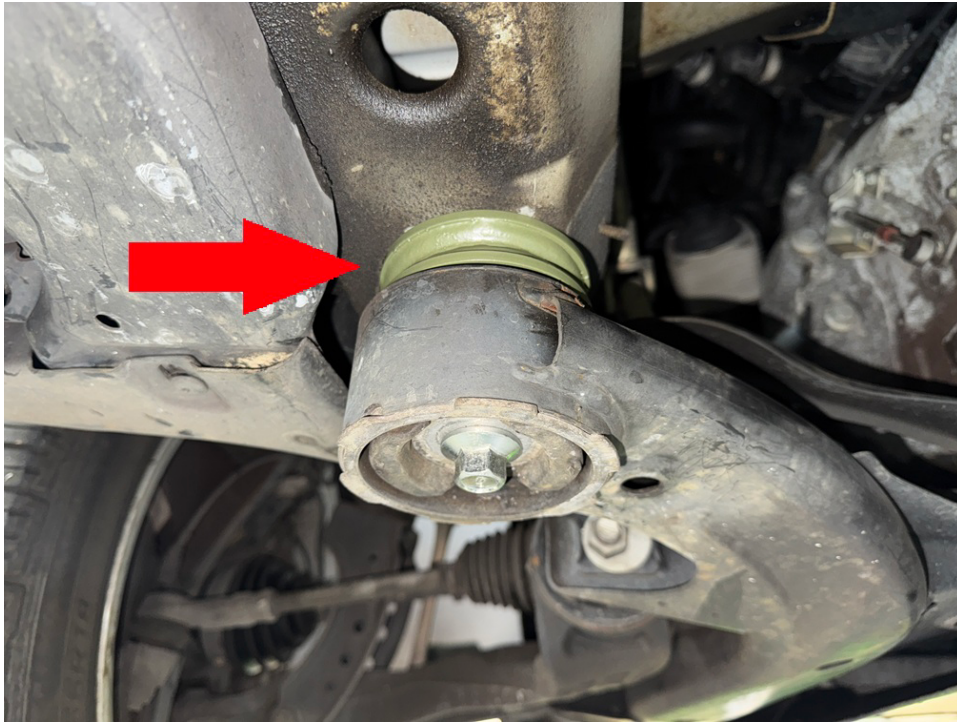


Step 7. Repeat process on passenger side.

Step 8. Locate and remove bolt directly above CV axle. Removing this bolt should allow the subframe to drop approximately one inch. (see photo)



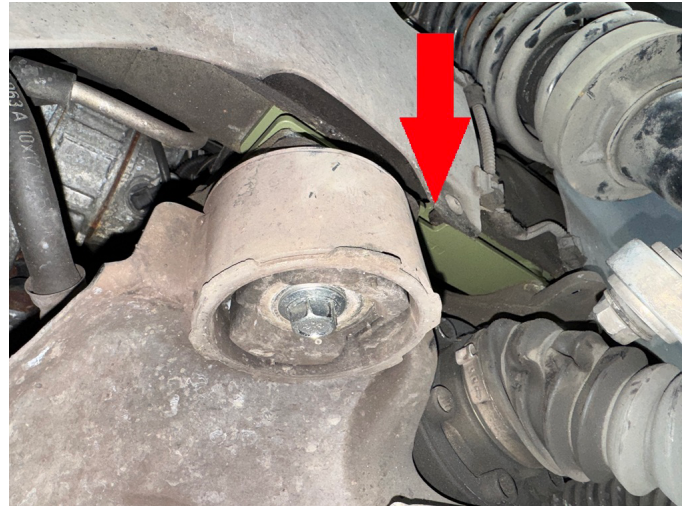
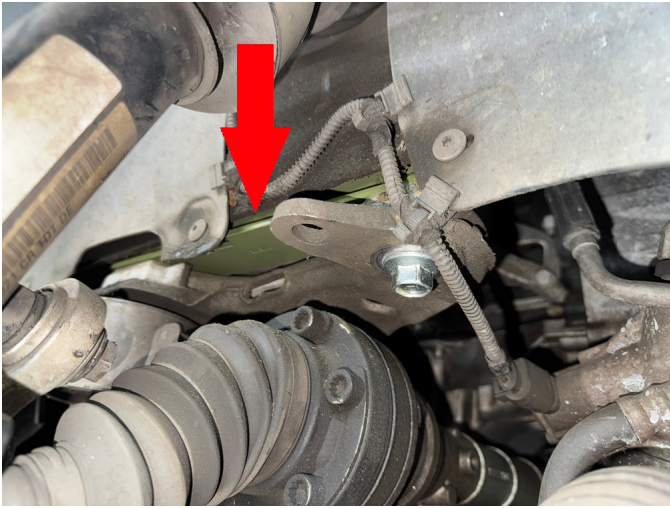
Step 9. Place 3.5x1 M14 spacer between subframe and body. Reinstall M14x135 bolt (do not tighten any bolts until all subframe spacers are installed.) (see photo)



Step 10. Repeat process on passenger side.



Step 11. Remove M14x160 and M14x125 bolts on driver side. Place engine cradle spacer between cradle and frame rail as shown in photo. Be sure the cutout on the side of the spacer lines up with the fender liner screw. Permanently install M14x160 and M14x125 bolts.



Step 12. Repeat process on passenger side.

Step 13. Torque all 6 front subframe bolts to 130 ft-lb.

Step 14. Support transmission crossmember with floor jack or screw jack. Remove 2 bolts on driver side holding crossmember to frame rail.



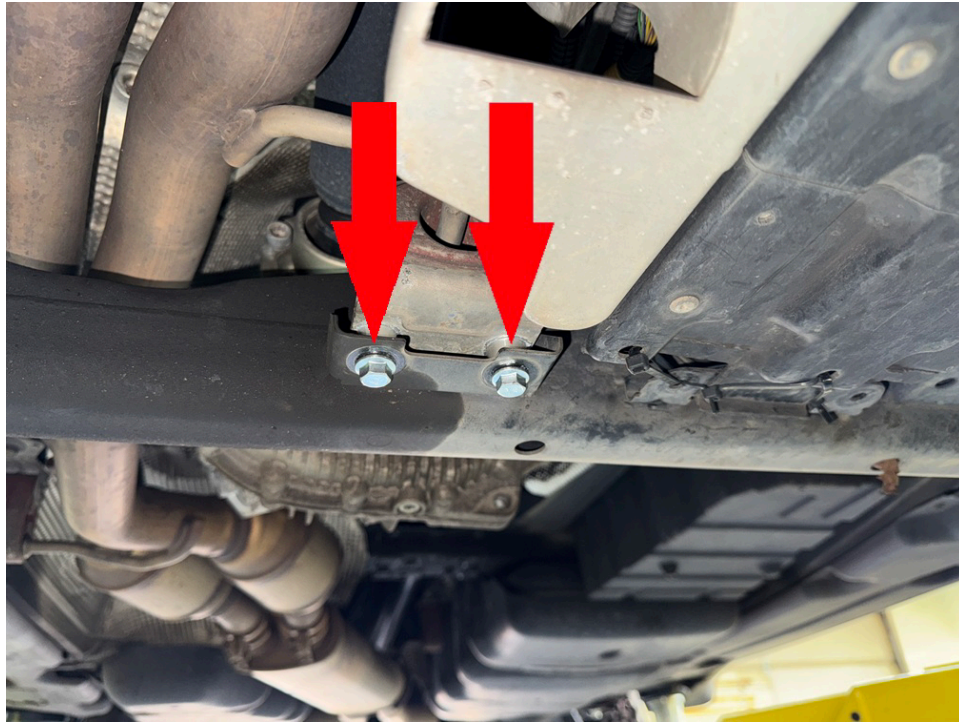
Step 15. Lower crossmember far enough to place transmission crossmember spacer between crossmember and frame rail. Install M10x100 bolts. (see photo)



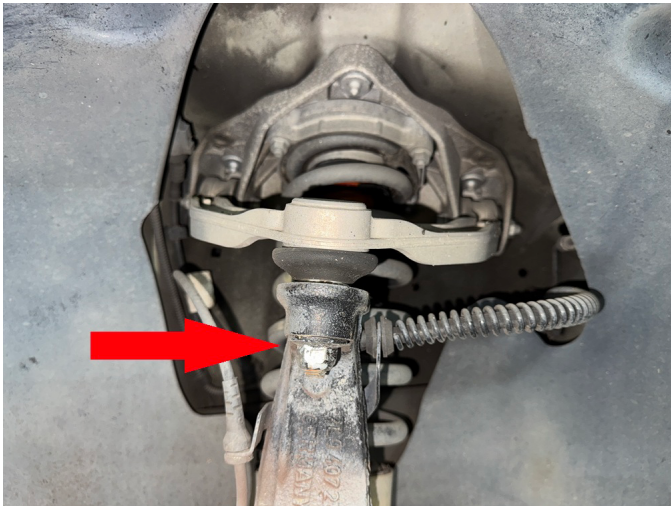
Step 16. Repeat process on passenger side.



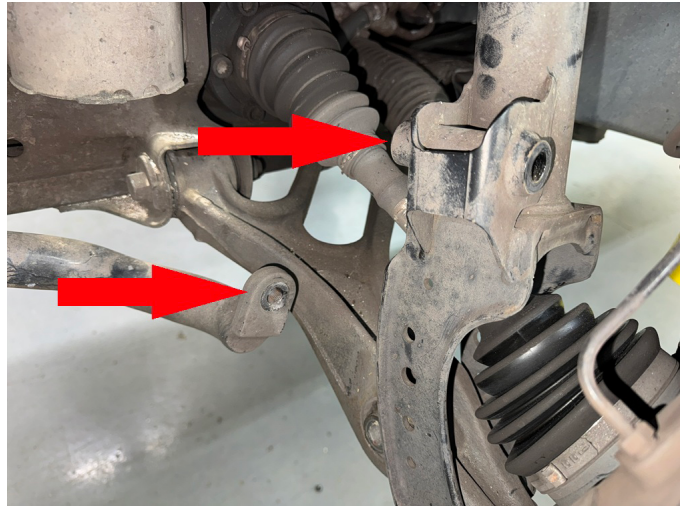
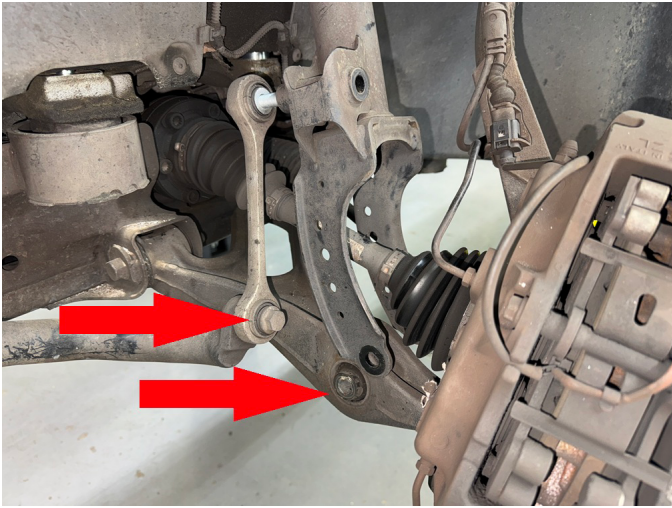
Step 17. Install 2 0.5x0.75 M8 spacers and 2 M8x40 bolts as shown on transmission crossmember and exhaust mounting bracket.



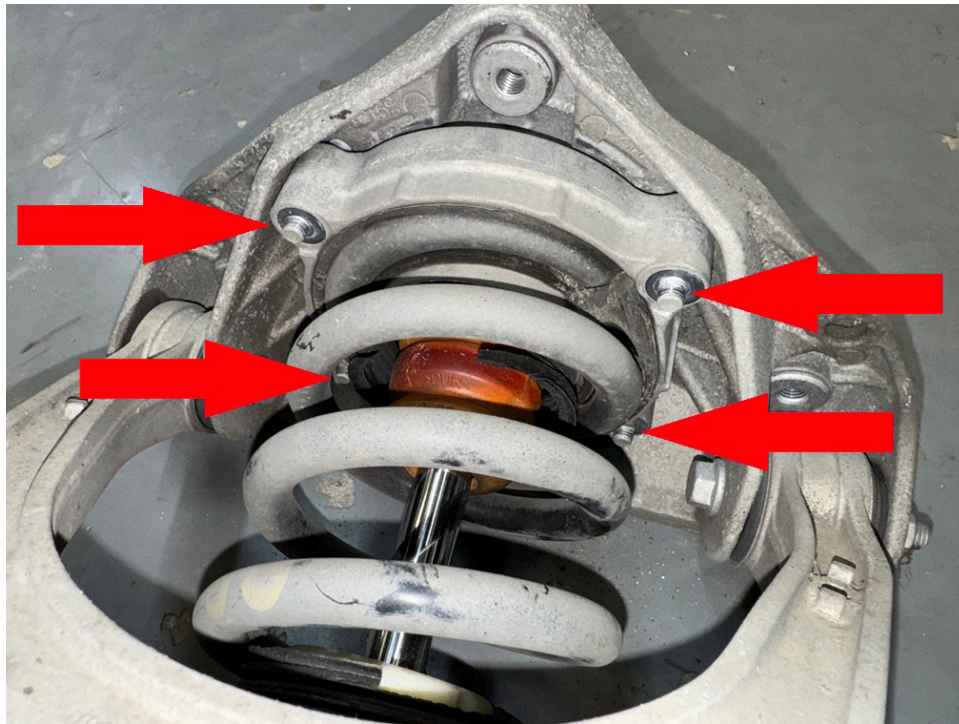
Step 18. Loosen driver side front upper ball joint nut and strike steering knuckle with a heavy hammer to dislodge ball joint.



Step 19. Remove bolts holding sway bar end link and strut fork to lower control arm. (see photo)



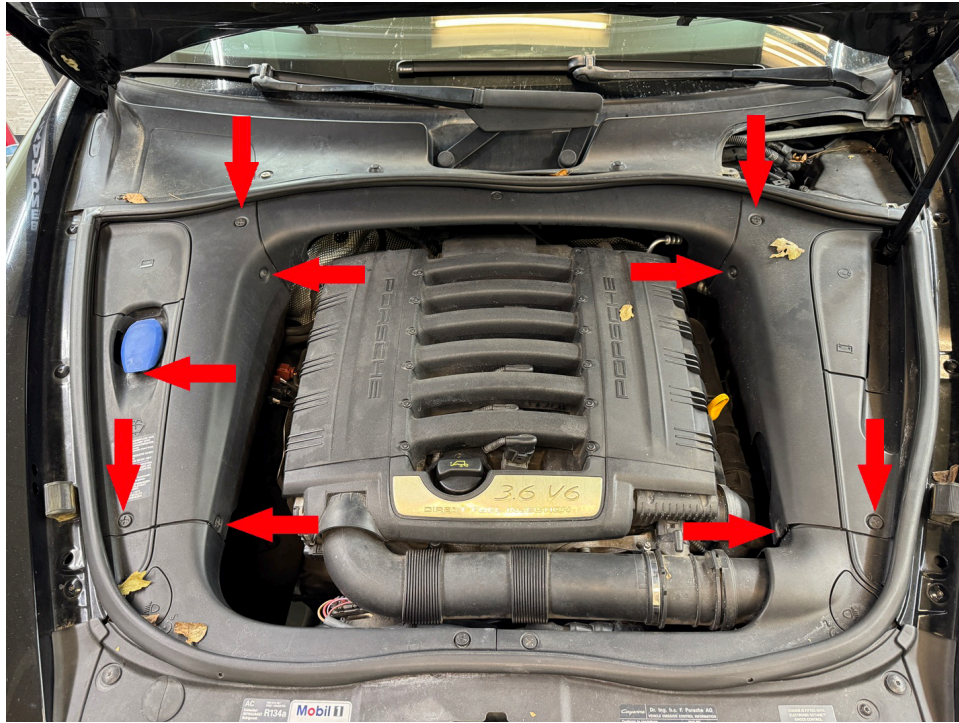
Step 20. Remove 4 nuts holding front strut to strut mount.



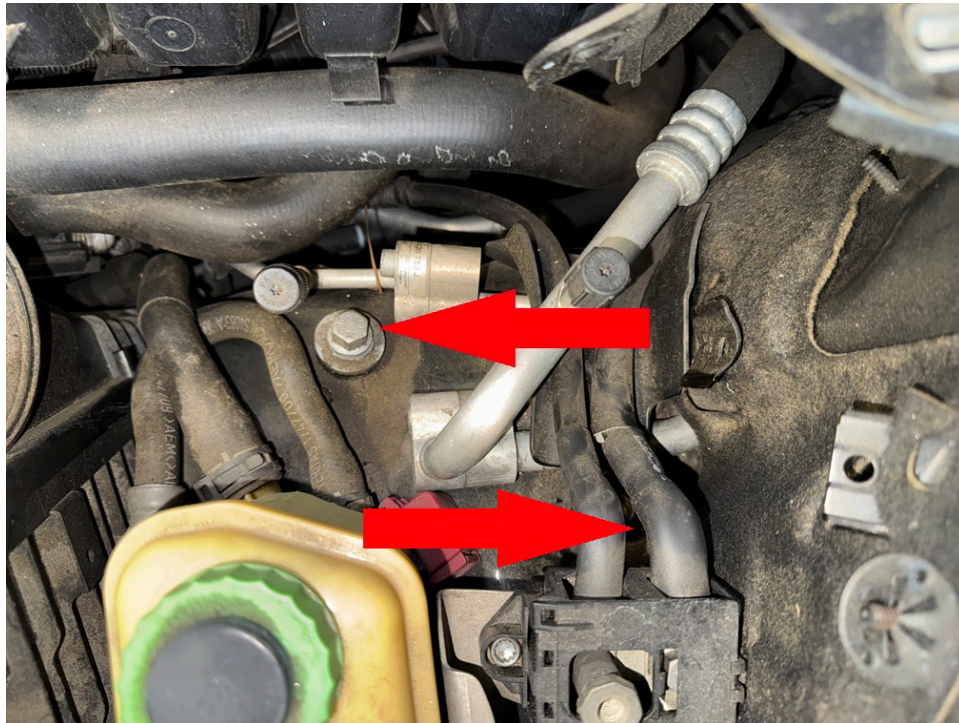
Step 21. Remove strut. Take care not to damage ABS wiring!

Step 22. Repeat process on passenger side.

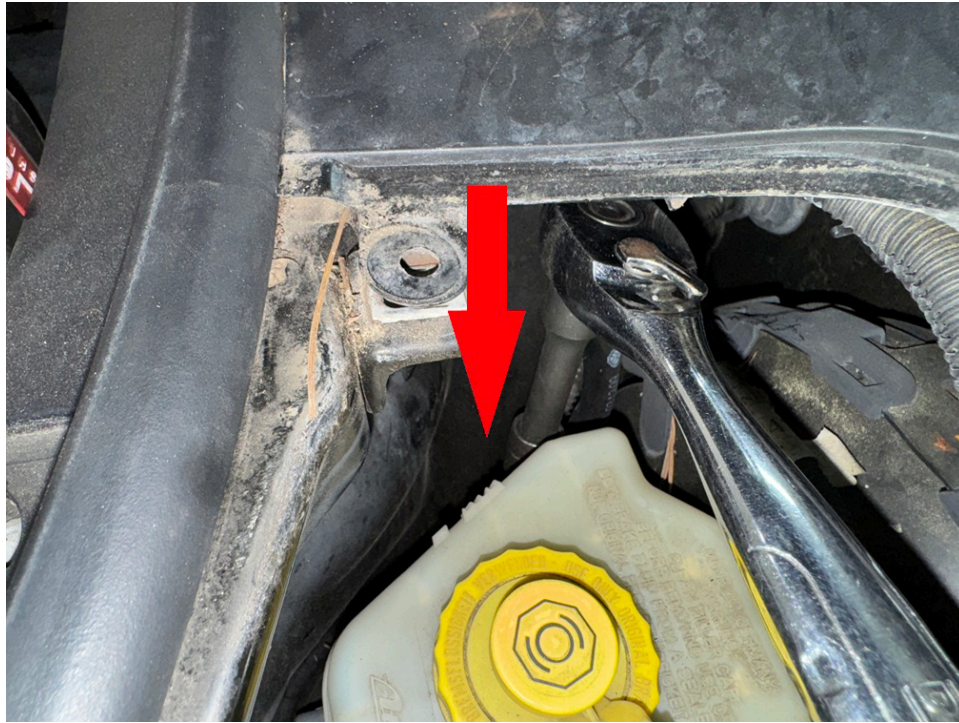
Step 23. Remove engine bay trim panels as shown.



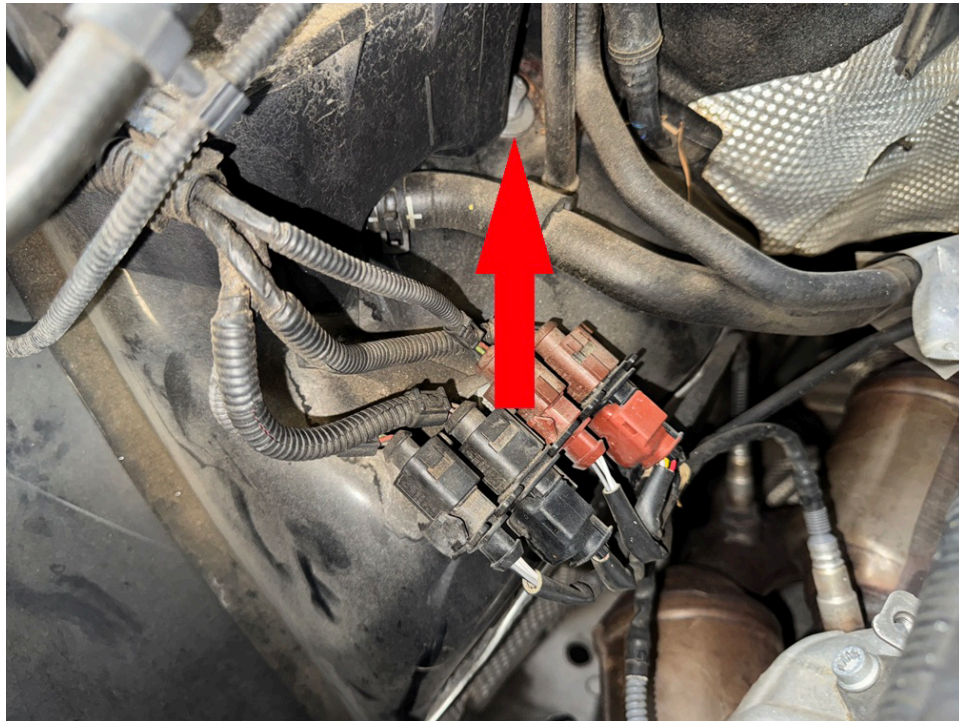
Step 24. Remove 2 bolts on fender well holding driver side front strut mount (see photos)



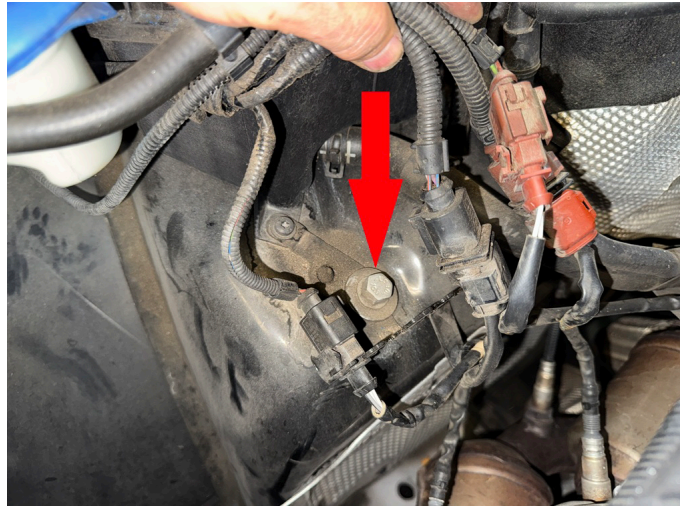
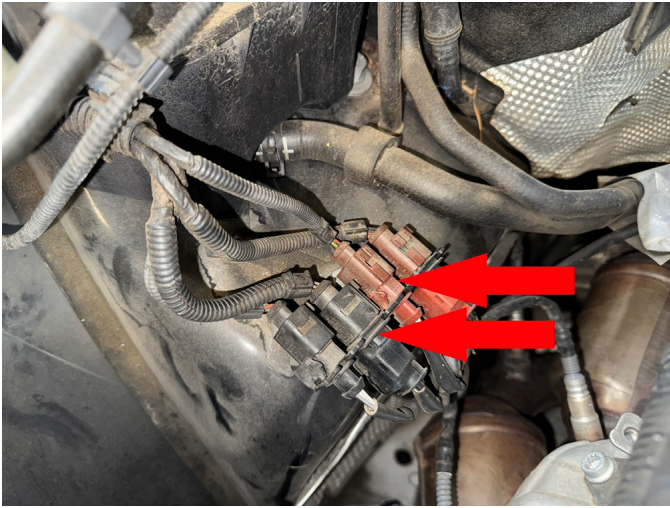
Step 25. Locate and remove strut mount bolt under cowl cover, remove driver side strut mount. (see photo)



Step 26. Remove bolt on fender well holding passenger side front strut mount. (see photo)



Step 27. Remove passenger side wiring harness connectors from mounting bracket to access bolt (see photo)



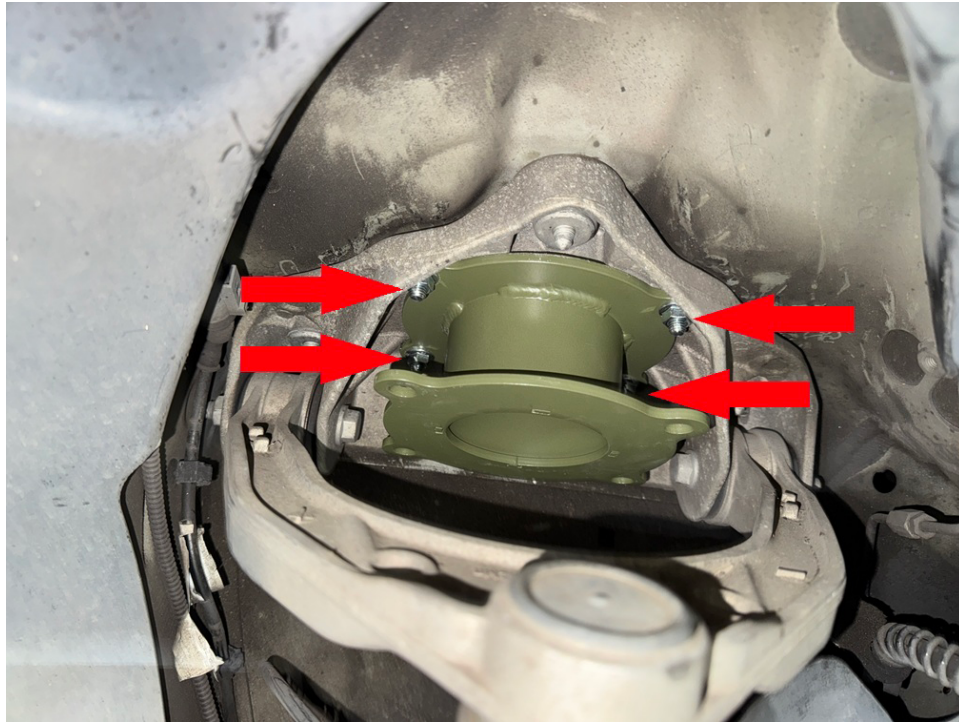
Step 28. Lift up cowl cover on passenger side. Locate and remove hidden front strut mounting bolt, remove passenger side strut mount (see photo)



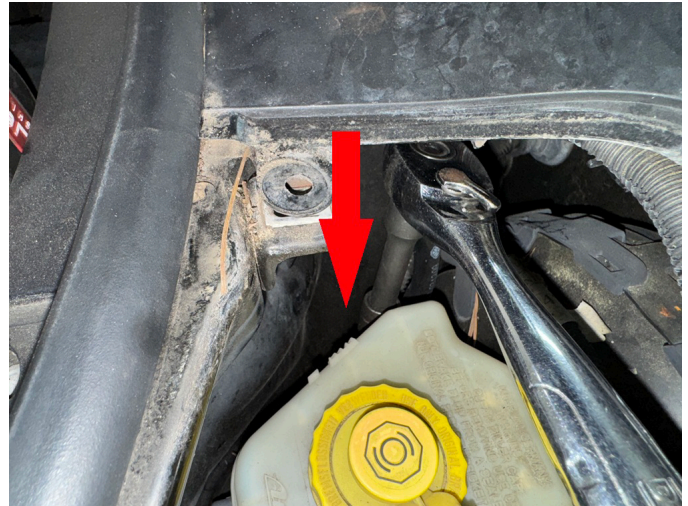
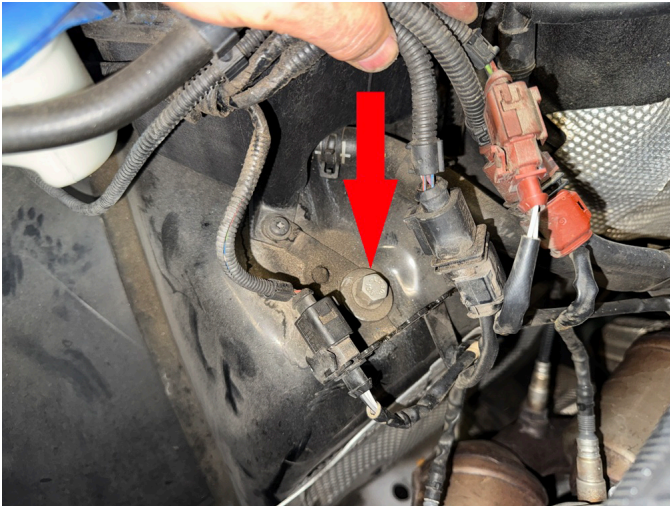
TIP: Leave these bolts in place.

Step 29. Using a heavy hammer, carefully tap strut mounting studs out of strut mount.

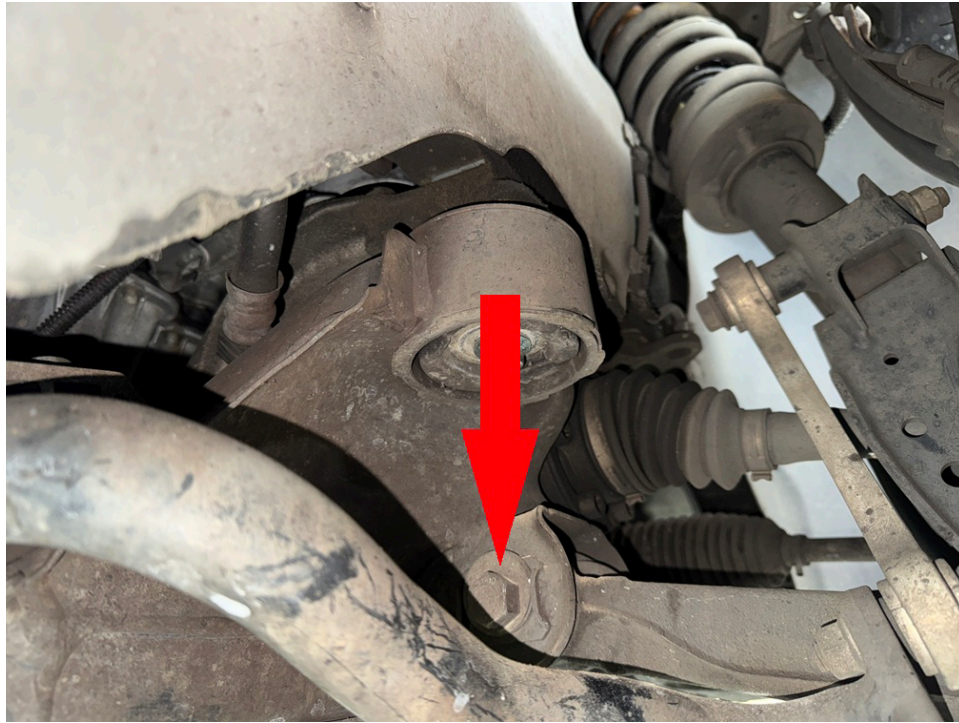
Step 30. Attach lift spacer to strut mount using hardware included in the kit. Torque bolts to 35 ft-lb



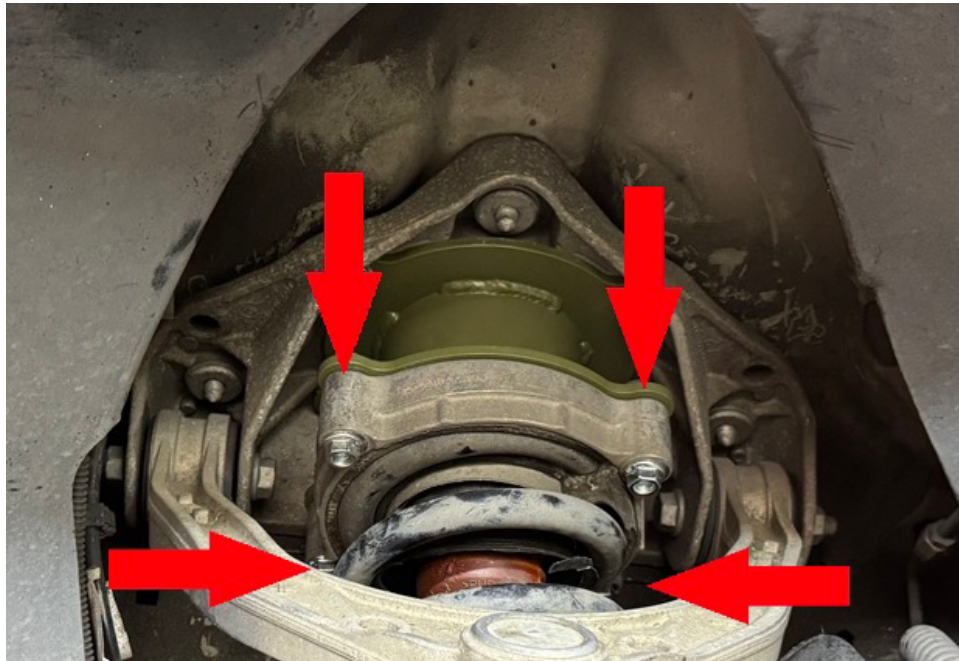
Step 31. Reinstall front strut mounts. Torque bolts to 50 ft-lb



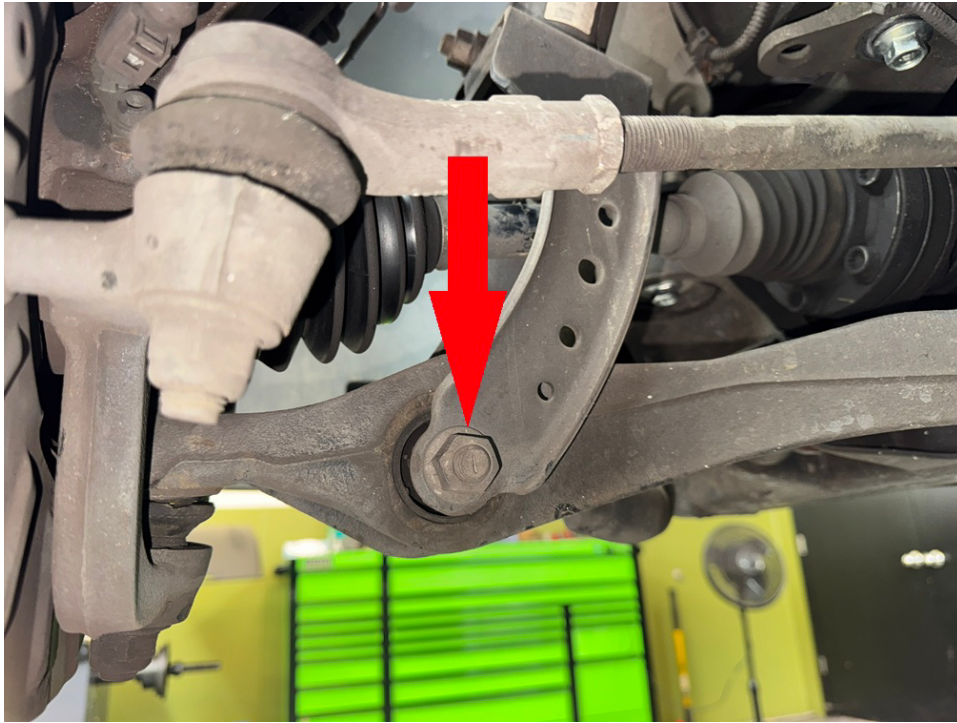
Step 32. Loosen lower control arm bolts to allow lower control arm to drop down.



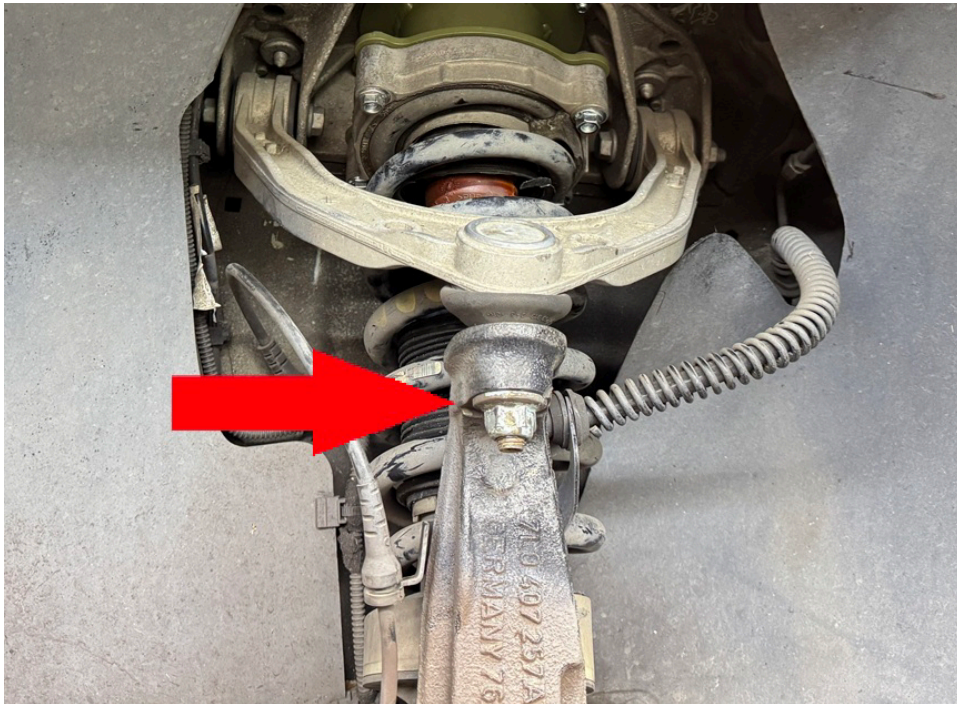
Step 33. Reinstall driver side strut using M8x50 bolts included in the kit. Torque bolts to 35 ft-lb.



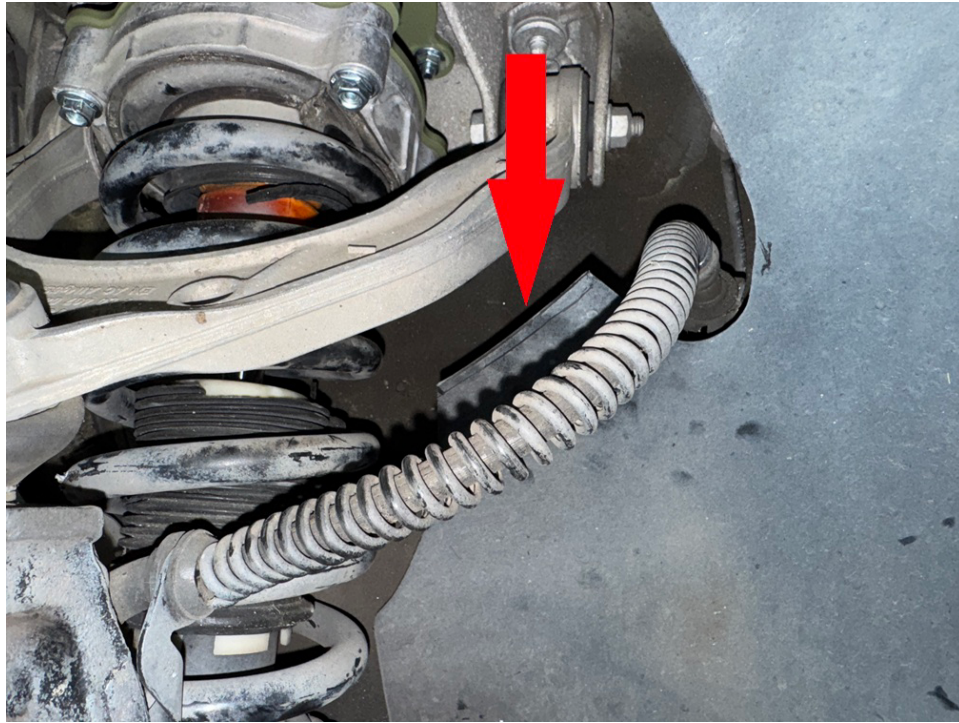
Step 34. Pull lower control arm downward to line up strut fork bolt. Reinstall bolt, torque to 110 ft-lb



Step 34. Using a floor jack or screw jack, compress suspension to allow upper ball joint to line up with steering knuckle. Torque ball joint nut to 70 ft-lb.

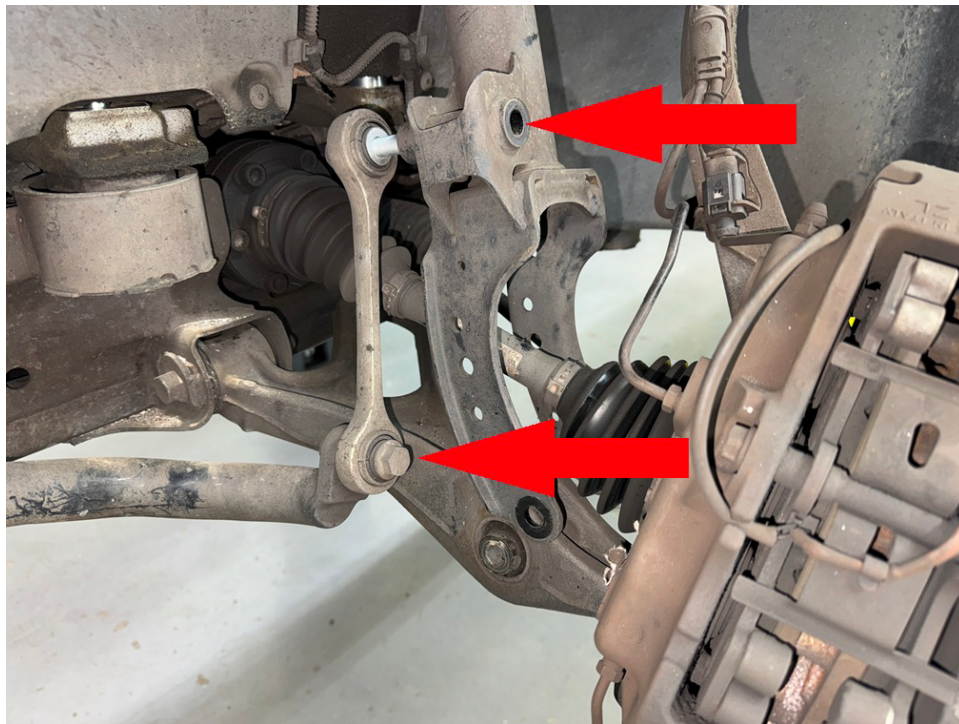


Step 35. Trim plastic liner to prevent contact with control arm.



Step 36. Repeat installation process for passenger side.

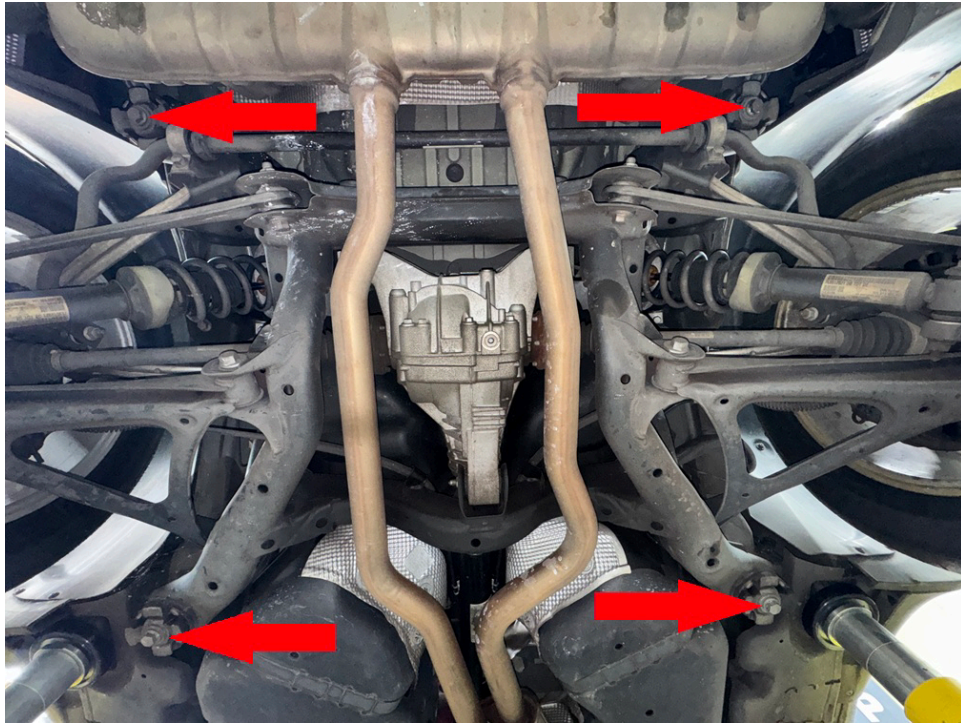
Step 37. Reconnect sway bar end links. Torque bolts to 70 ft-lb



Rear Installation

Step 1. Support rear subframe with screw jack or floor jack.

Step 2. Locate 4 main subframe mounting bolts, remove driver side front bolt and temporarily install M14x160 bolt.



Step 3. Repeat step 2 for remaining 3 subframe bolts.

Step 4. Carefully lower rear subframe approximately 1 inch.

Step 5. Remove M14x160 driver side front bolt, place 2.75x1 M14 spacer between subframe and body, reinstall bolt. Do not tighten until all 4 bolts and spacers are installed.

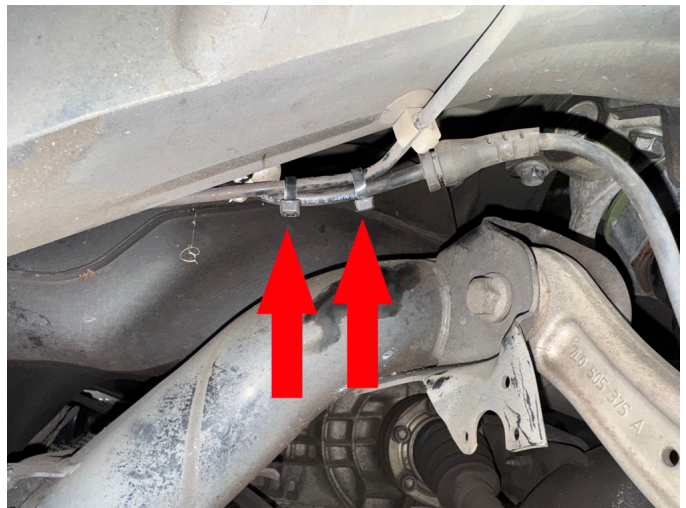
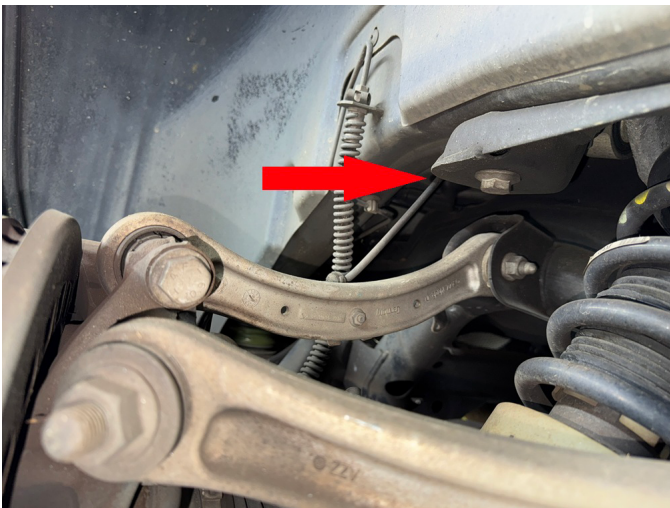


Step 6. Repeat process with remaining subframe bolts.

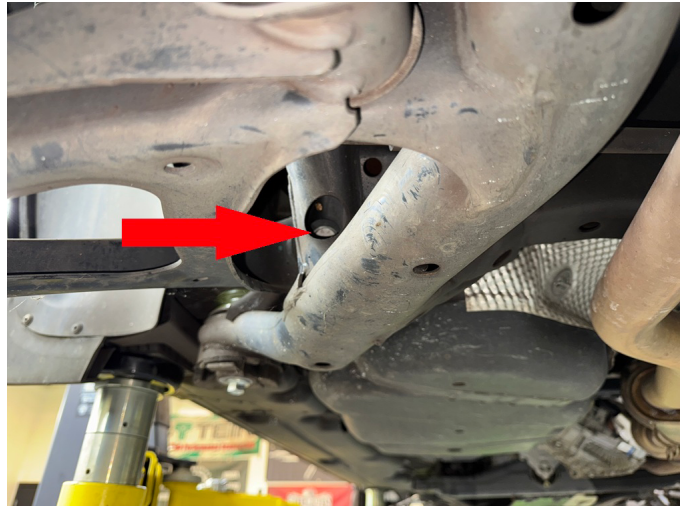
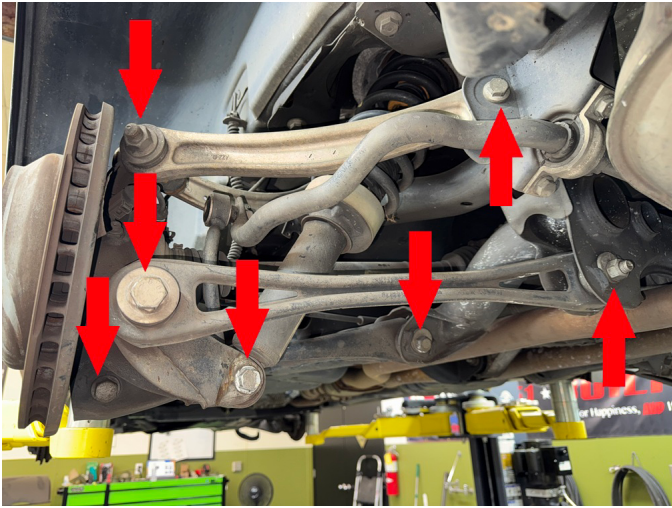


Step 7. Tighten all 4 subframe bolts to 130 ft-lb.

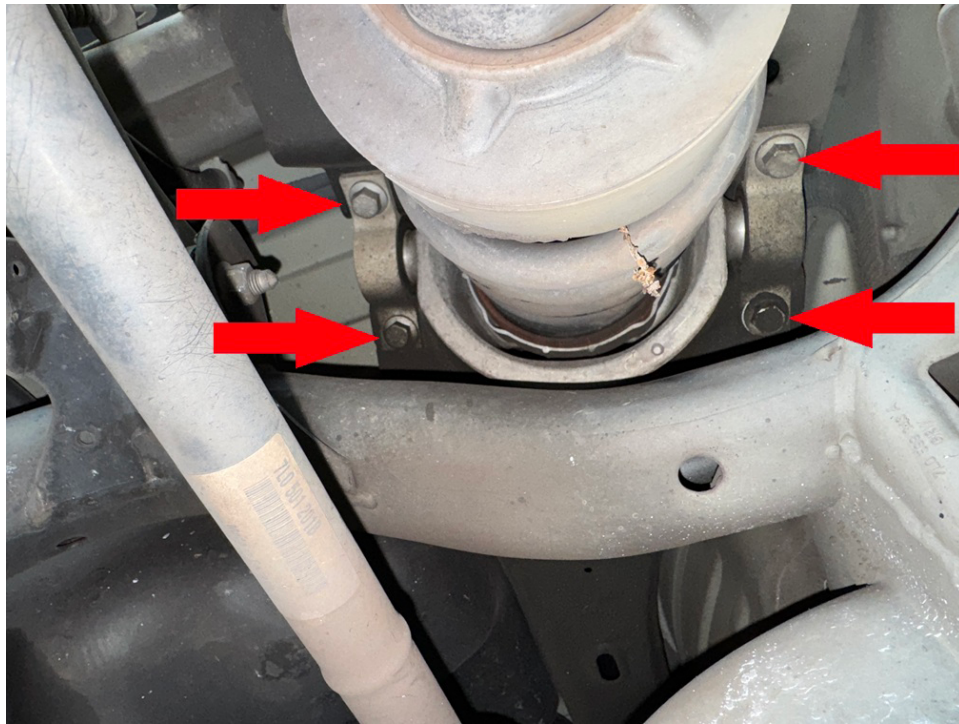
Step 8. Locate ABS wire mounting point on inner frame rail. Pull wire from mount and secure with zip ties as shown.



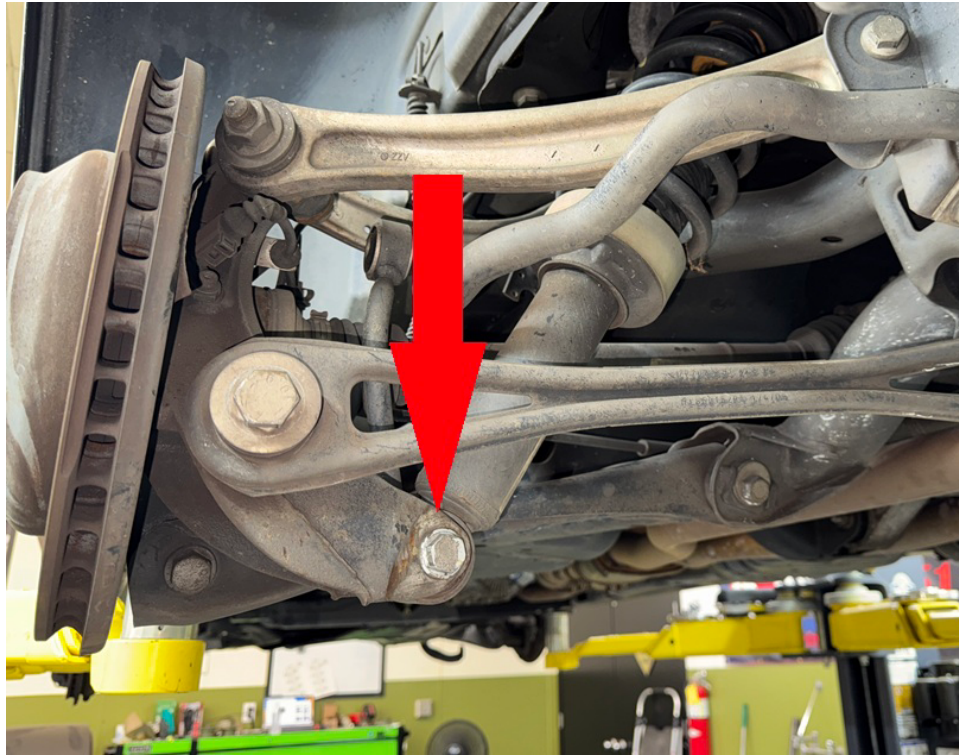
Step 9. Loosen ALL bolts in driver side rear suspension.



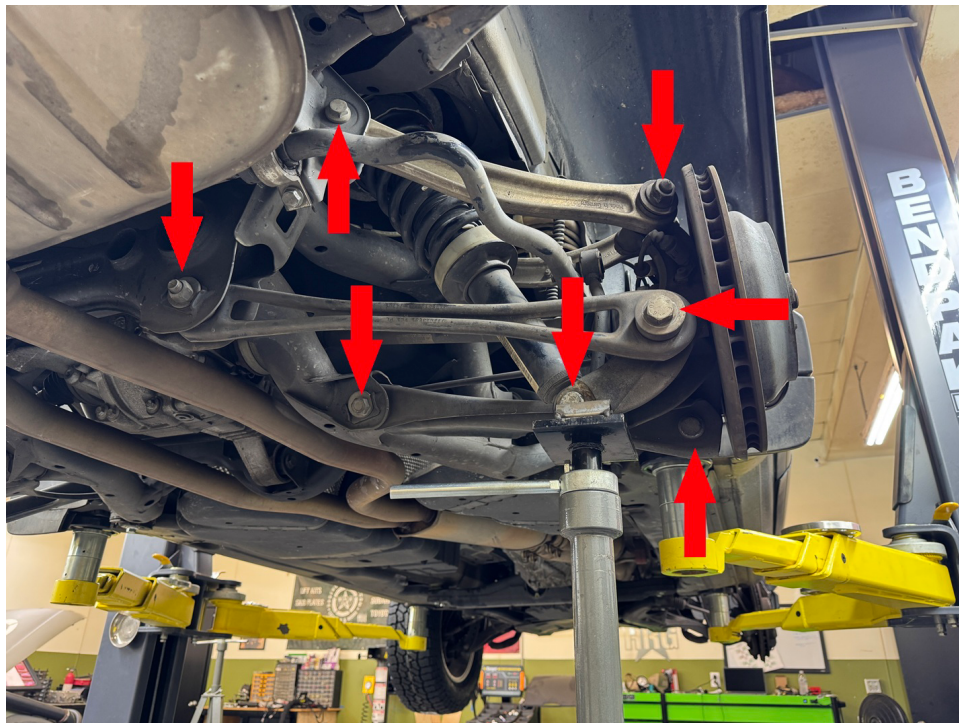
Step 10. Remove 4 bolts holding driver side strut to body.



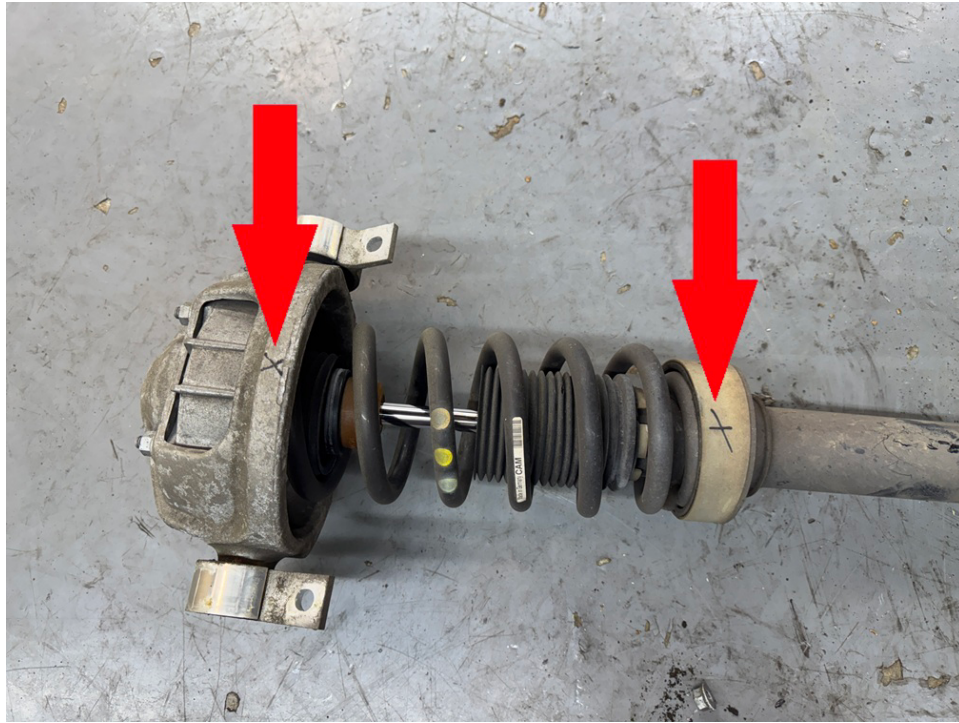
Step 11. Remove lower strut bolt, remove strut.



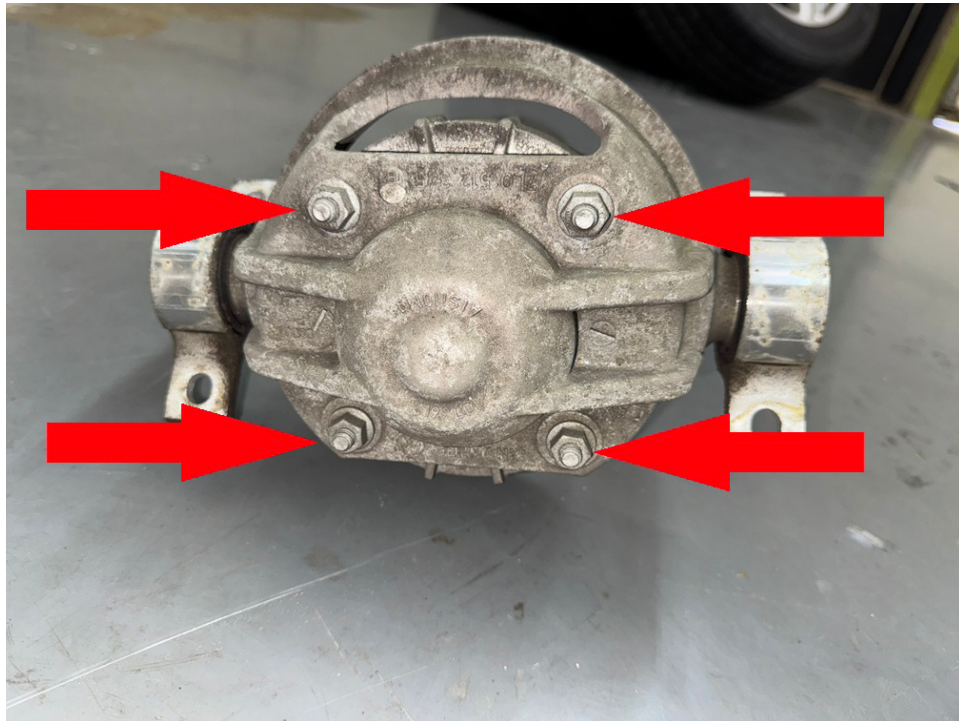
Step 12. Repeat strut removal process on passenger side.



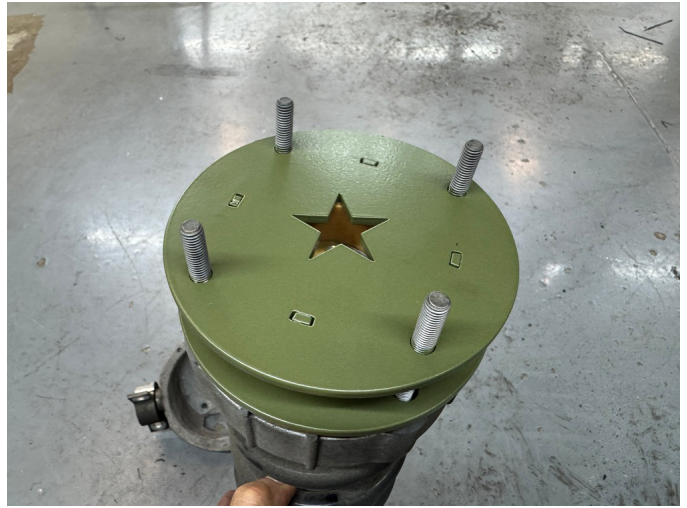
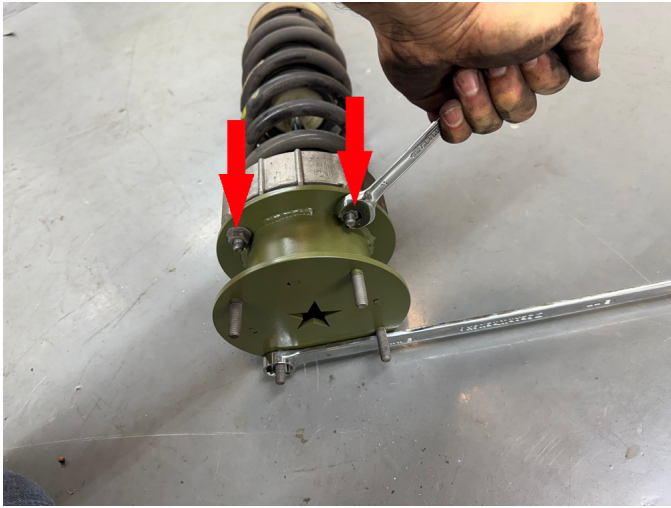
Step 13. Mark orientation of strut and strut mount to ensure they go back together in the same direction.



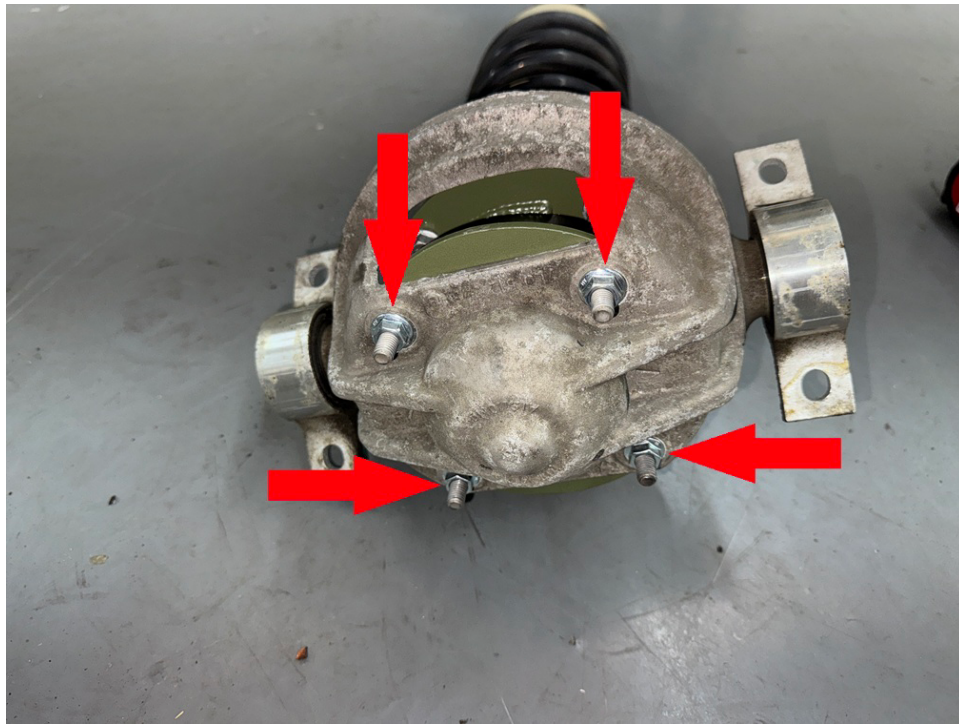
Step 14. Remove strut from strut mount.



Step 15. Attach lift spacer to strut using OEM hardware.



Step 16. Attach strut/spacer to strut mount using hardware provided in the kit.

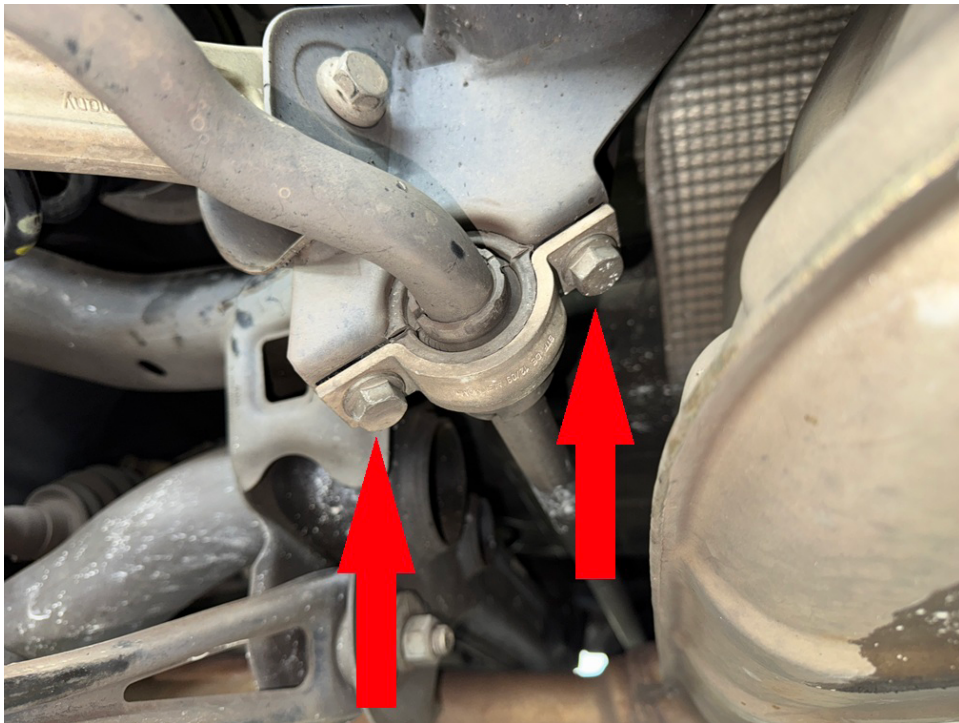


Step 17. Reinstall strut/spacer into vehicle using OEM hardware.

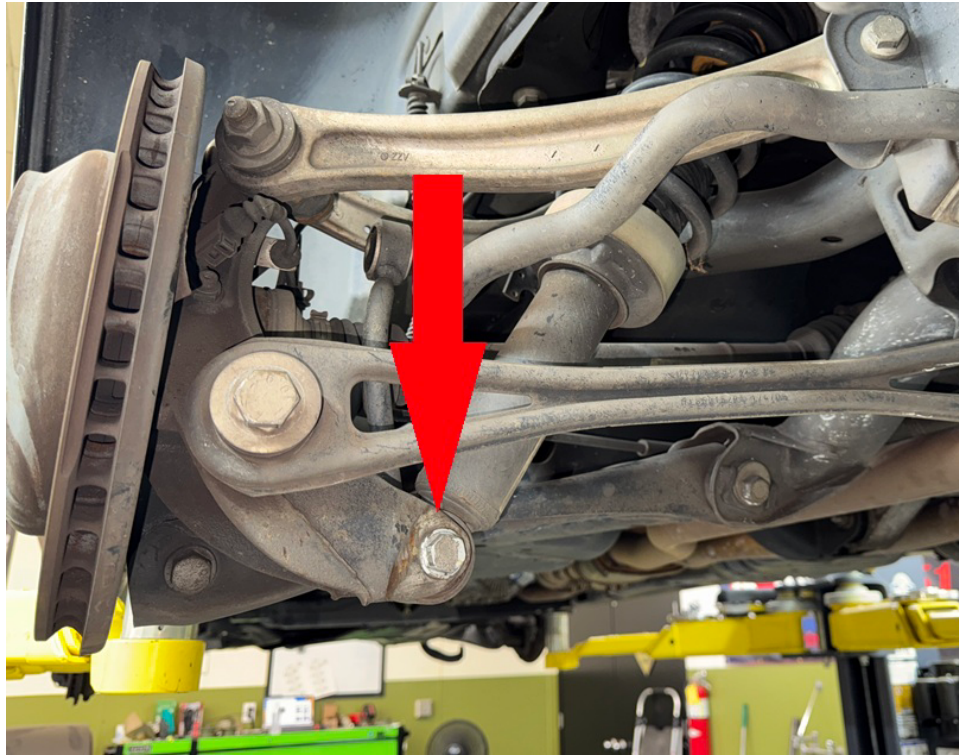


Step 18. Repeat installation process on passenger side.

Step 19. Loosen bolts holding sway bar to allow it to move freely.

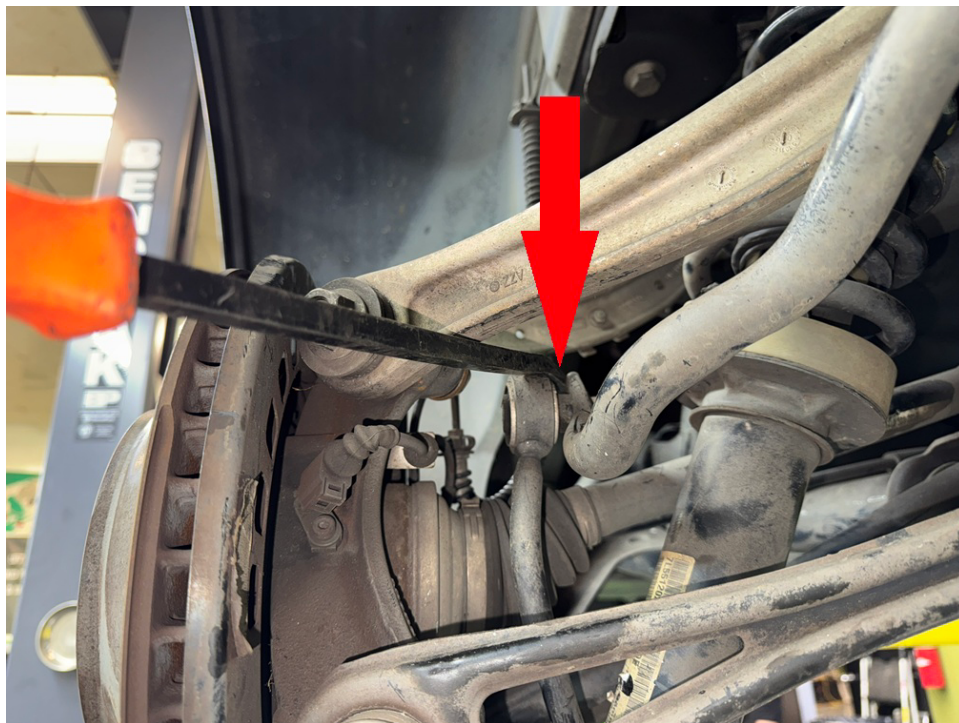


Step 20. Using a large pry bar, force rear suspension downward to allow lower strut bolt to line up.



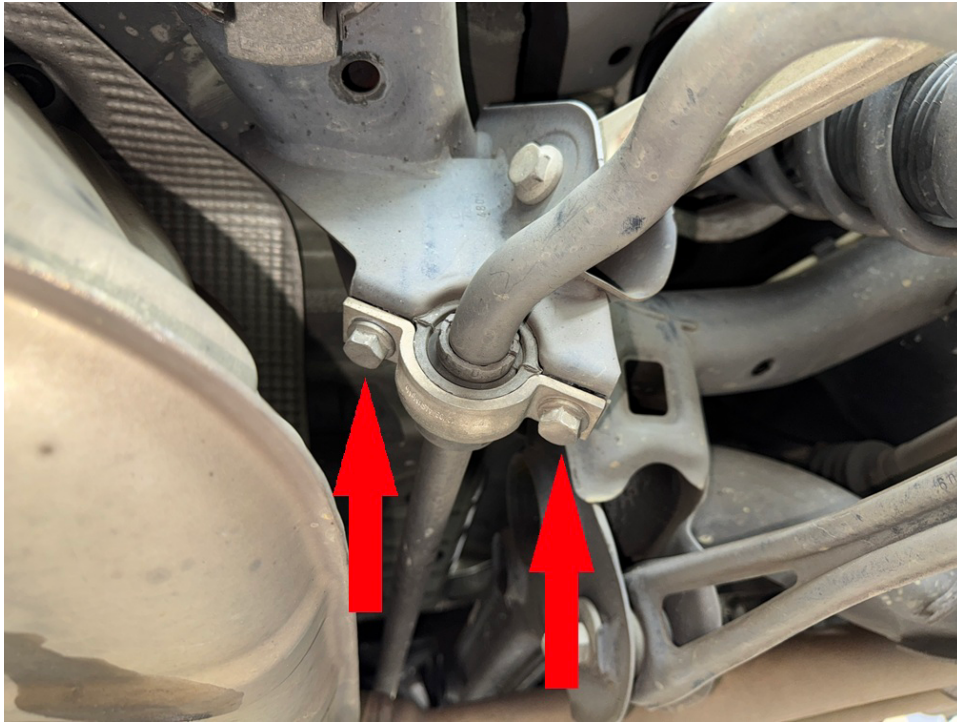
NOTE: if rear suspension does not want to move, double check that ALL bolts have been loosened!

Step 21. Using a large pry bar, force sway bar downward to align bolt.

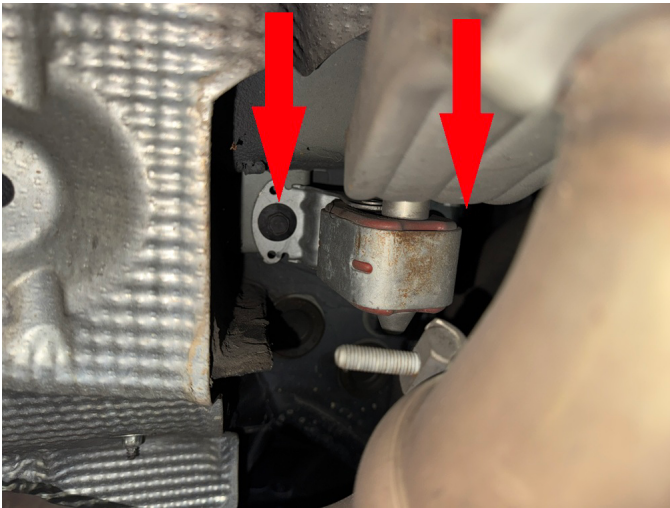


Step 22. Repeat process on passenger side.

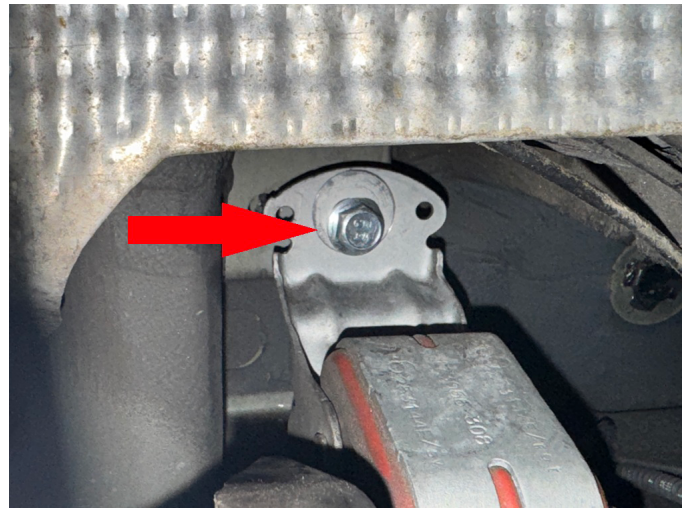
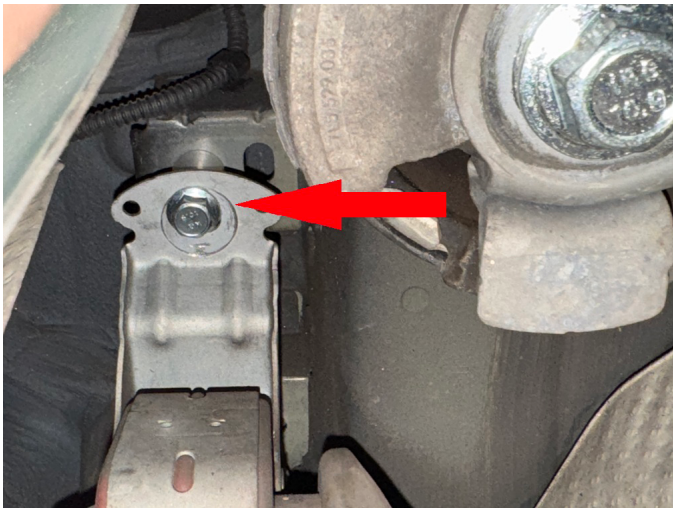
Step 23. Tighten sway bar mounting bolts.



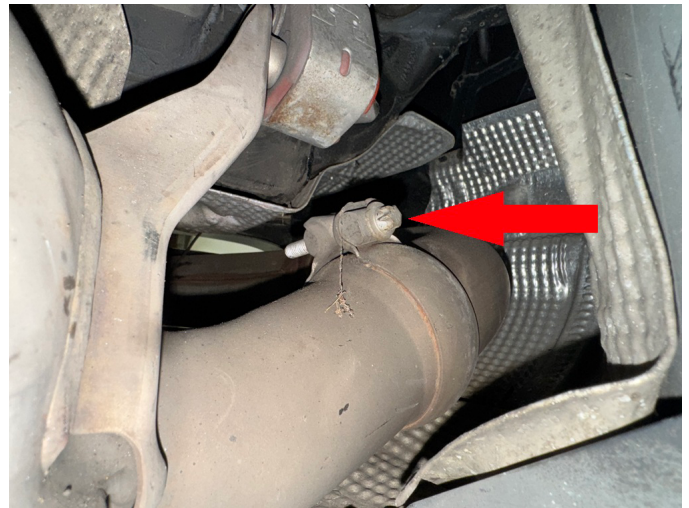
Step 24. Remove bolts holding driver side rear muffler mount to body. Repeat on passenger side.



Step 25. Place 0.75x1 M8 spacers between muffler mount and body. Install M8x40 in place of OEM bolts.



Step 26. Locate and loosen bolt holding driver side rear exhaust tip.



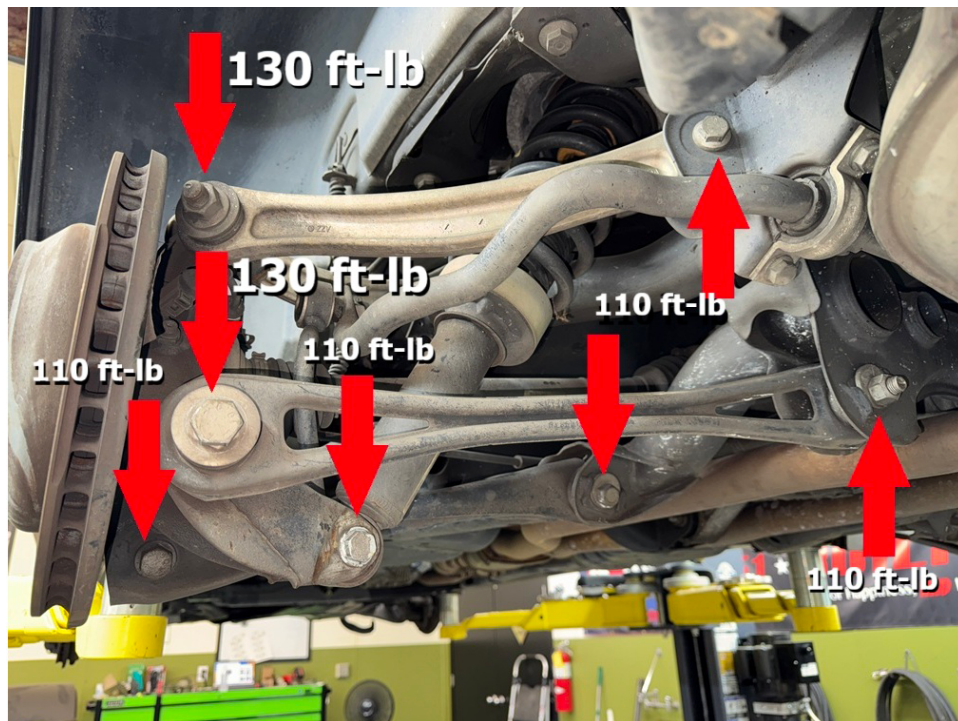
Step 27. Rotate exhaust tip upward to re-center it in the bezel. Tighten bolt.



Step 28. Repeat exhaust tip modification on passenger side.

Step 29. IMPORTANT: Load driver side rear suspension using floor jack or screw jack, to simulate its position with vehicle on the ground.

Step 30. Tighten ALL driver side rear suspension bolts.

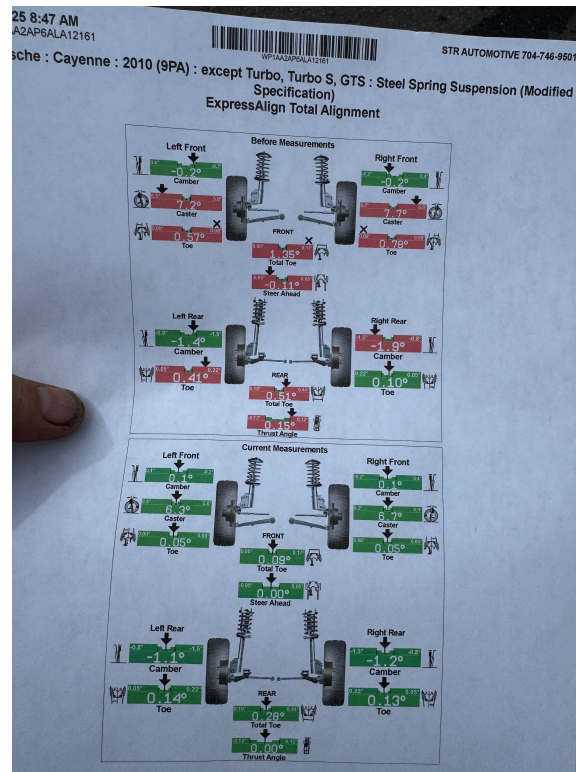


Step 31. Repeat process on passenger side.

Step 32. Double check all bolts in rear suspension. Mark double checked bolts with a paint pen.

Step 33. Reinstall wheels.

Step 34. Get a professional 4 wheel alignment.



Step 35. Find some trails!



Note: Installing a lift kit will change the suspension geometry and will require a 4 wheel alignment.

Warning: Failure to follow the procedures in these installation instructions may result in unsafe handling characteristics, damage to vehicle, or loss of control.

For tech support, please call 1-844-HRG LIFT (474-5438) from 8-4:30 PM EST Mon-Thu 8-3:30 PM Fri or email us 24/7 at support@hrgoffroad.com.

This product is intended for off-road use only!!

Copyright HRG Offroad 2026

FAQ:

Why is it called a 4 inch lift kit if the spacers are only 2.5"? Scan QR code below:

