



# **RIDGELINE**



**2006-2014 Ridgeline 4.5-inch lift kit installation guide**  
*Professional installation is recommended.*

## **IMPORTANT!**

Lifting and modifying the suspension on your vehicle may result in drive line vibrations, damaged bushings, erratic handling characteristics, and shortened suspension component life. HRG Offroad recommends the following:

- Checking and/or replacing worn drive axles with new parts, not remanufactured.
- Checking and/or replacing all worn factory rubber bushings with urethane bushings, such as Prothane.
- Checking and/or replacing worn shock absorbers and bump stops.
- Performing a 4-wheel alignment after working on suspension components.

**Lift kits may not be legal for use on public highways in your area. Please check local laws before installing!!**

## **WARNING!**

***Lifted vehicles are more prone to rolling over.***

Some HRG Offroad products are designed to improve off-road capabilities. Modifying the suspension of your vehicle may result in handling characteristics that are different from a factory equipped vehicle. Extreme care must be used to prevent a rollover or loss of control. Always operate your modified vehicle at a reduced speed to ensure your ability to maintain control under all driving conditions. Driving your vehicle in an unsafe manner may result in serious injury or death. HRG Offroad lift kits are designed and tested to work together. HRG Offroad does not recommend combining this lift kit with any other type of suspension or body lift. Always wear your seat belt.

Recommended tire/wheel sizes:

Stock: 245/65/17 or 245/60/18 (29.5")

17" wheels

255/65/17 (30.0")

245/70/17 (30.4")  
265/65/17 (30.5")  
255/70/17 (31.0")  
265/70/17 (31.5")

18" wheels  
245/65/18 (30.5")  
255/65/18 (31.0")  
265/65/18 (31.5")

***Be sure to check fitment prior to installation! These sizes are only suggestions. HRG is not responsible for improperly fitted wheels/tires!***

**Included in the kit:**

2 4.0" offset front lift spacers 5320  
2 3.5 or 4" rear lift spacers 5326 or 5325  
6 M10x25mm grade 10.9 bolts (rear)  
6 M10 nuts (rear)  
6 M10 nuts (front)  
2 Replacement front sway bar links  
4 2.75x2" M14 spacers (front subframe)  
4 2.75x2" M14 spacers (rear subframe)  
4 2x3 M14 spacers (rear trailing arms)  
6 1.25x2" M12 spacers (front subframe bolt retaining brackets)  
2 1x2" M10 spacers (passenger side engine mount)  
2 1x2" M10 spacers (center driveshaft carrier bearing)  
4 .75x1.5" M8 spacers (driveshaft safety loops)  
4 M14x160mm bolts (rear subframe)  
4 M14x150mm bolts (front subframe)  
4 M14x115mm bolts (rear trailing arms)  
2 M10x70mm bolts (center driveshaft carrier bearing)  
2 M10x90mm bolts (passenger side engine mount)  
6 M12x70mm bolts (front subframe retainer brackets)  
4 M8x50mm bolts (driveshaft safety loops)  
2 front brake line relocation brackets  
2 rear brake line relocation brackets  
1 extended steering coupler  
2 1" foam seals (steering coupler)  
2 17mm camber bolts

**Note to installer:** Some bolts removed to install lift kit will be replaced with longer bolts. Some OEM hardware will be reused. **Installing this kit requires removal of the plastic splash shield under the front bumper and modifying the sheet metal surrounding the steering coupler to allow clearance.**

Approximate installation time is 5-6 hours.

## Front installation:

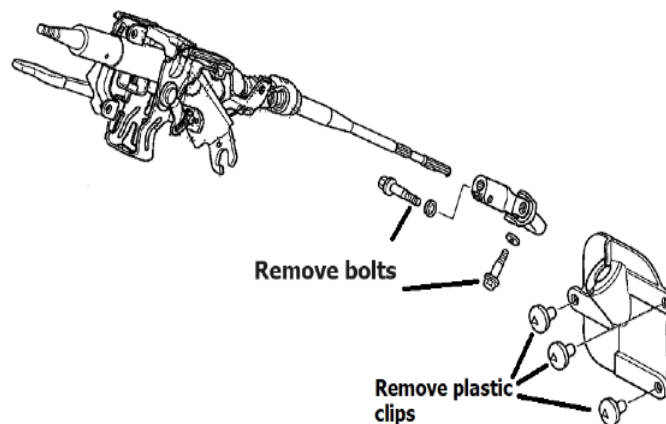
**Parts needed:** 2 4.0" offset front lift spacers, 6 M10 nuts, 2 sway bar end links, 4 2.75x2 M14 spacers, 6 1.25x1 M12 spacers, 2 1x2 M10 spacers, 2 front brake line brackets, 1 steering coupler, 2 foam seals, 2 M10x90 bolts, 4 M14x150 bolts.

**Tools required:** Lug wrench, jack/jack stands, impact driver, 3/8 and 1/2" drive ratchets, socket extensions, 12mm socket, 14mm socket, 14mm wrench, 17mm socket, 17mm wrench, 18mm socket, 21mm socket, 21mm wrench, 6mm hex key, common pliers, heavy hammer, torque wrench, body saw or metal cutting tool.

Step 1. Disconnect negative battery terminal.

Step 2. Take the driver seat belt and pass it through the steering wheel to keep it from turning.

Step 3. Under driver dash, remove plastic dust cover on steering column to gain access to steering coupler.

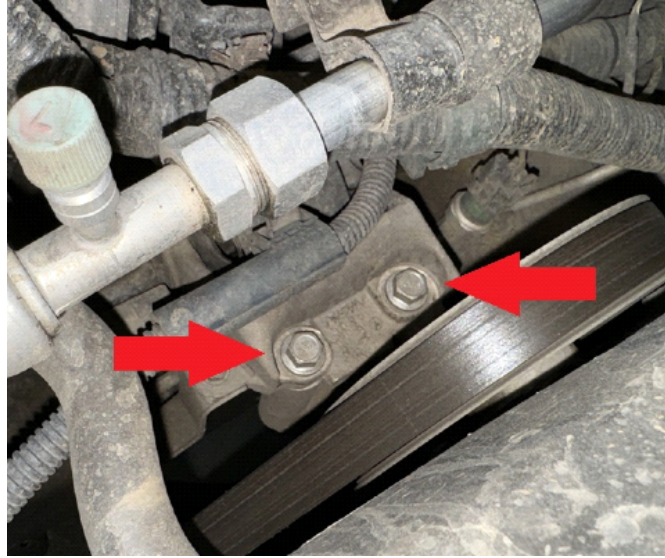


Step 4. Remove 10mm bolts holding steering coupler to steering column. Remove coupler.

Step 5. Install the new extended steering coupler onto steering rack. Do not connect coupler to steering column yet. You will connect it to the steering column once the subframe is lowered.

Step 6. Support engine/transmission with floor jack, taking care not to dent oil pan.

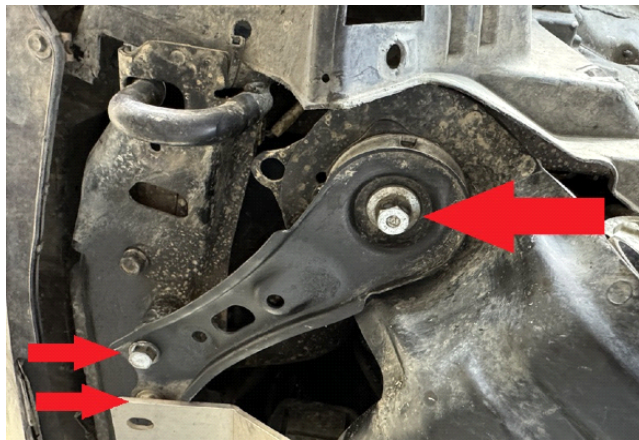
Step 7. Remove 2 14mm bolts holding passenger side engine mount to engine bracket.



Step 8. Remove lower plastic splash guard under front bumper to gain access to front main subframe bolts. This splash guard will not be reinstalled.

Step 9. Remove 6 17mm bolts holding main subframe stiffener brackets to body. (4 under front bumper, 2 are on the back of the front subframe)

Step 10. Loosen but do not remove all 4 M14 main subframe bolts.



Step 11. Temporarily thread in M14x150 bolts included in the kit. This will keep the subframe in line while lowering.

Step 12. Carefully lower subframe approximately 2 inches.

Step 13. Remove M14x150 bolts one at a time and slip 2.75x2 M14 spacers between subframe and body. Reinstall M14x150 bolts as you go. Do not forget to pass bolts through the subframe stiffener brackets.

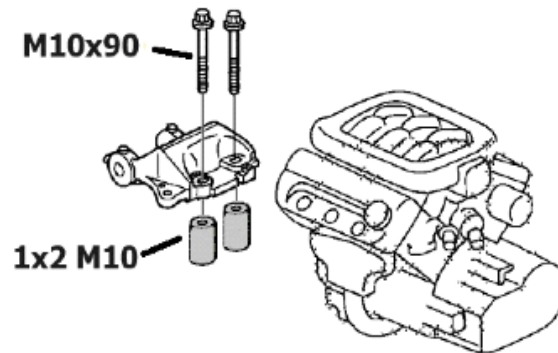
Step 14. Install 4 1.25x2 M12 spacers between main subframe retainer brackets and body using supplied

M12x70 bolts.



Step 15. Tighten all subframe bolts at this time.

Step 16. Place 2 1x2 M10 spacers between engine bracket and engine mount, secure with M10x90 bolts



Step 17. Under dash, connect extended steering coupler to steering column. It may be necessary to loosen or temporarily remove the bolt holding the coupler to the steering rack.

Step 18. Once the steering coupler is fitted, tighten both bolts.

Step 19. Turn steering wheel to verify the coupler has proper clearance.

Step 20. It may be necessary to trim away some of the sheet metal surrounding the steering coupler to allow clearance.

**TIP: Loosen the bolts in the steering column couplers, steer the wheels back and forth, and re-tighten them to eliminate binding.**

Step 21. Install 2 foam weather seals between steering rack and body.

Step 22. Re-install dust cover on steering column below interior dashboard.

Step 23. Remove plastic access panels under hood to reach front upper strut mounts.

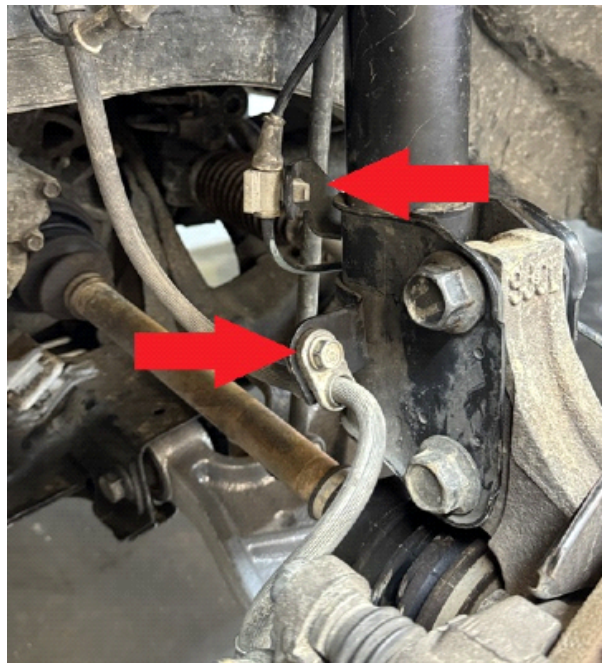


Step 24. Remove nuts holding driver side front strut to body. (leave one nut on so struts do not fall when lifting vehicle to access bottom bolts)

Step 25. Lift vehicle and support with jack stands.

Step 26. Remove wheels.

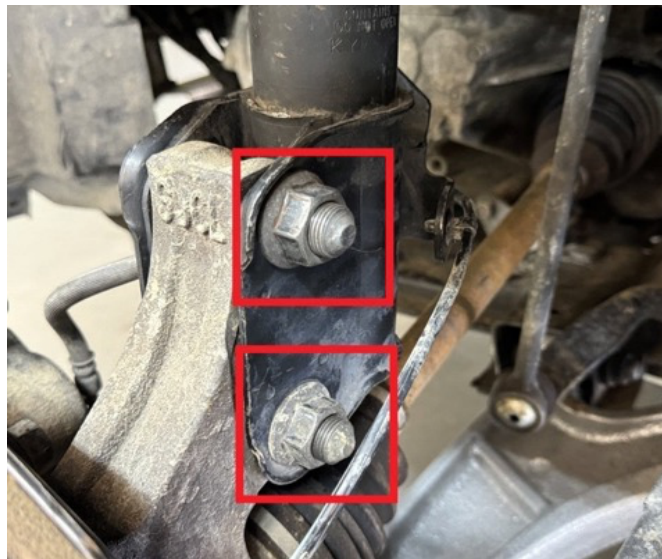
Step 27. Remove the brake line and unclip ABS wiring from driver side strut.



Step 28. Remove and discard the OEM sway bar link.



Step 29. Remove bolts connecting strut to steering knuckles. (See diagram.) Save hardware for reinstallation. If installing camber adjustment bolts, only one original bolt from each side will be reused.



Step 30. Using a length of wire, or large zip ties, temporarily secure steering knuckle to prevent axle shaft from slipping out of inner CV joint.

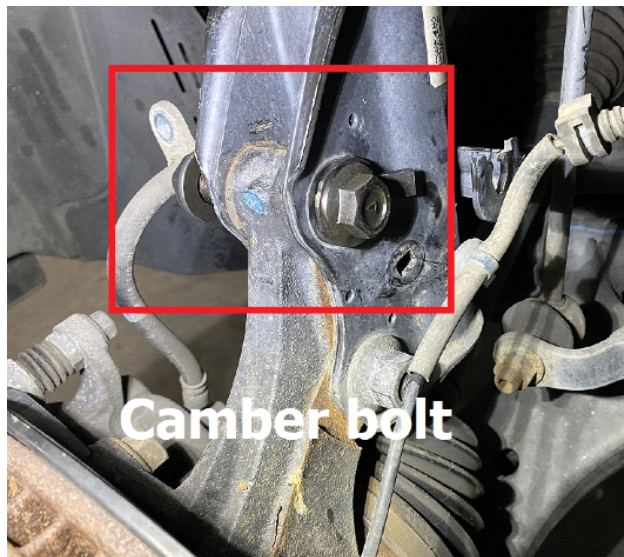
Step 31. Remove strut.

Step 32. Mount lift spacer to strut using supplied M10 nuts.



Step 33. Reinstall strut in reverse order, using OEM hardware to attach spacer to body.

Step 34. Install the camber adjustment bolts in place of top strut mounting bolt. Refer to camber bolt instructions. (see photo)



Step 35. Install new sway bar end link (included in the kit).

Step 36. Install brake line bracket (see photo)



Step 37. Repeat steps 27-36 for passenger side.

Step 38. Referring to the factory service manual, torque all bolts to spec and mark with paint pen once completed.

Step 39. Reinstall wheels and lower vehicle.

### **Rear installation:**

**Parts needed: 2 3.5" rear lift spacers, 6 M10 bolts, 4 2.75x2 M14 spacers, 4 2x3 M14 square spacers, 2 1x2 M10 spacers, 2 rear brake line brackets, 4 M14x160 bolts.**

**Tools required: Lug wrench, jack/jack stands, impact driver, 3/8 and 1/2" drive ratchets, socket extensions, 10mm socket, 12mm socket, 14mm socket, 14mm wrench, 17mm socket, 19mm socket, 17mm wrench, 5 mm hex key, common pliers, large pry bar, heavy hammer, torque wrench.**

Step 1. Jack up vehicle and support with jack stands.

Step 2. Support rear subframe with floor jack or screw jack.

Step 3. Remove 2 rear-most bolts in rear subframe.

Step 4. Temporarily thread in 2 of the M14x160 bolts included with the kit.

Step 5. Remove 2 front-most bolts in rear subframe.

Step 6. Carefully lower the subframe about 2 inches and place 2 2.75x2 spacers in both front locations and then install 2 M14x160 bolts. Repeat this process for the rear 2 spacers.



Step 7. Loosen M10 bolts holding center drive shaft carrier bearing. Remove one bolt, install 1x2" M10 steel spacer and M10x70 bolt, then repeat process for second bolt.

Step 8. Remove M8 bolts from both front and rear driveshaft safety loops, install (2) .75x1.5" M8 spacers and M8x50 in each loop.

Step 9. Remove one M14 bolt and loosen the second M14 bolt in driver side rear trailing arm. Install 2x3" M14 spacers one at a time and replace OEM bolts with supplied M14x115.



Step 10. Remove C clip holding rear brake line to brake line bracket in driver side rear fender well.

Step 11. Carefully cut a notch in the bracket and bend metal to the side to allow the brake line to be freed from bracket.

Step 12. Remove bolt holding rear brake line to body.

Step 13. Place rear brake line bracket over the bolt hole and reinstall bolt.

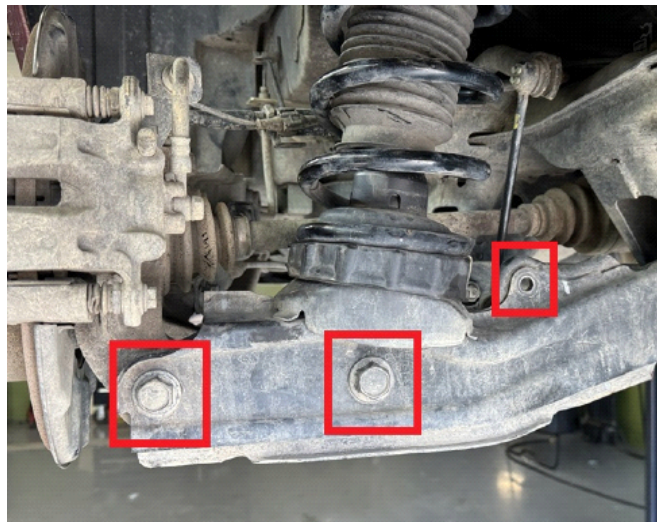
Step 14. Place brake line into bracket and secure with original C clip.



Step 15. Remove bolt holding driver side strut to lower control arm.

Step 16. Remove bolt holding lower control arm to wheel hub.

Step 17. Remove nut holding sway bar link to lower control arm.



Step 18. Loosen but do not remove nut holding lower control arm to subframe to allow arm to drop.



Step 19. Remove 3 bolts holding strut to body and remove strut.



Step 20. Repeat steps 9-20 for passenger side.

Step 21. **Swap Left and Right-side struts.**

Step 22. Attach spacer to strut using M10x25mm bolts and M10 nuts.



Step 23. Re install strut to body using OEM hardware.



Step 24. Reinstall bolt holding strut to lower control arm.

Step 25. Using a floor jack, lift rear lower control arms to line up bolt holes on lower control arm and wheel hub.



Step 26. Reinstall bolt holding lower control arm to wheel hub.

**TIP: Do not fully tighten control arm bolts until the vehicle is resting on the ground. (This will help prolong bushing life.)**

Step 27. Repeat steps 22-26 for passenger side.

Step 28. Reinstall wheels and lower vehicle.

Step 29. Double check all bolts for tightness, refer to service manual for torque specifications.

Step 30. Get a professional alignment.

Step 31. Find some trails!

**Note: Installing a lift kit will change the suspension geometry and will require a 4-wheel alignment.**

**Warning: Failure to follow the procedures in these installation instructions may result in unsafe handling characteristics, damage to vehicle, or loss of control.**

**For tech support, please call 1-844- HRG LIFT (474-5438) Mon-Thu**

from 8AM-4:30 PM, Fri 8-3:30 PM EST or email us 24/7 at [support@hrgoffroad.com](mailto:support@hrgoffroad.com).

*This product is intended for off-road use only!!*

Copyright HRG Offroad. 2024