



MINICAB TRUCK

1990-98 Minicab Truck 3" lift kit installation guide

Professional installation is recommended

IMPORTANT!

Lifting and modifying the suspension on your vehicle may result in drive line vibrations, damaged bushings, erratic handling characteristics, and shortened suspension component life. HRG Offroad recommends the following:

- Checking and/or replacing worn drive axles with new parts, not remanufactured.
- Checking and/or replacing all worn factory rubber bushings with urethane bushings, such as Prothane.
- Checking and/or replacing worn shock absorbers and bump stops.
- Performing a 4 wheel alignment after working on suspension components.

Lift kits may not be legal for use on public highways in your area. Please check local laws before installing!

WARNING!

Lifted vehicles are more prone to rolling over.

Some HRG Offroad products are designed to improve off-road capabilities. Modifying the suspension of your vehicle may result in handling characteristics that are different from a factory equipped vehicle. Extreme care must be used to prevent a rollover or loss of control. Always operate your modified vehicle at a reduced speed to ensure your ability to maintain control under all driving conditions. Driving your vehicle in an unsafe manner may result in serious injury or death. HRG Offroad lift kits are designed and tested to work together. HRG Offroad does not recommend combining this lift kit with any other type of suspension or body lift. Always wear your seat belt.

Recommended tire/wheel sizes:

- Stock: 145/80R12 (21.1")
- +0.5" 155/70R13 (21.5")
- +1" 175/65R13 (22")
- +1" 185/55R14 (22")

Be sure to check fitment prior to installation! These sizes are only suggestions. HRG is not responsible for improperly fitted wheels/tires!

Included in the kit:

- 2 2.5" (38mm) offset lift spacers (1 Left 1 Right)
- 2 1.0" (38mm) rear spring blocks
- 2 Rear spring shackles 5601
- 6 M8 nuts (front spacers)
- 4 "U" bolts (rear springs)

8 5/16" washers (U bolts)
8 5/16" nuts (U bolts)
2 M10x120 bolts (rear shackles)
2 M10x100 bolts (rear shackles)
4 M10 bolt sleeves (rear shackles)
4 M10 nuts (rear shackles)
2 rear shock extension brackets
2 M10x60 bolts (shock extensions)
2 M10 nuts (shock extensions)
2 rear shock bushings (shock extensions)
1 upper trans bracket (transmission)
1 lower trans bracket (transmission)
10 1x1 M10 spacers (trans crossmember/radius arm mounts)
4 M10 Fender washers (trans crossmember)
6 M10x40 bolts (front radius arm mounts)
4 M10x80 bolts (trans crossmember)
4 1.25x1 M12 spacers (front subframe)
4 M12x45 bolts (front subframe)
2 M10 nuts (square trans bracket)
1 M10 nut (rectangular trans bracket)

Approximate installation time: 4-5 hours

Skill level: *MODERATE*

Installation Video:

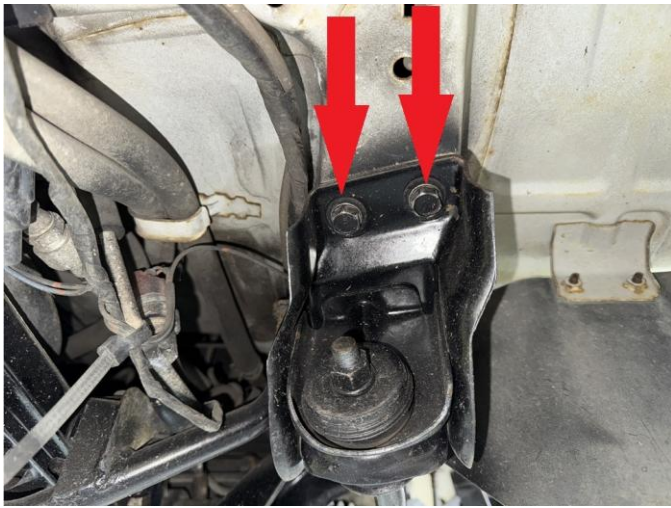
Front installation:

Parts required: 2 front spacers, 6 nuts, 10 1x1 M10 spacers, 4 1.25 M10 washers, 6 M10x40 bolts, 4 M10x80 bolts, 8 M12x45 bolts, 8 1.25x1 M12 spacers

Tools required: Floor jack, Impact gun, 3/8" ratchet, 12mm socket, 14mm socket, 17mm socket, 17mm wrench, torque wrench.

Step 1. Lift vehicle and remove wheels.

Step 2. Remove 3 bolts holding driver side radius arm to chassis.



Step 3. Repeat process on passenger side.

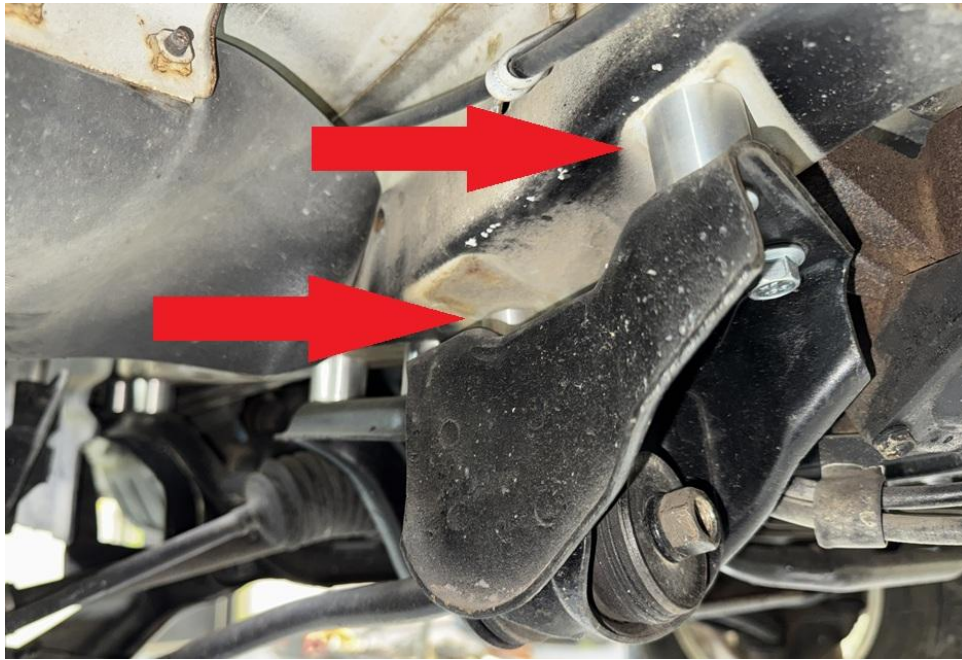
Step 4. Support engine crossmember with a jack.

Step 5. Remove 4 17mm bolts holding front crossmember/subframe to chassis on driver side. Temporarily install M12x45 bolts to keep crossmember aligned while lowering.



Step 6. Repeat step 5 for passenger side.

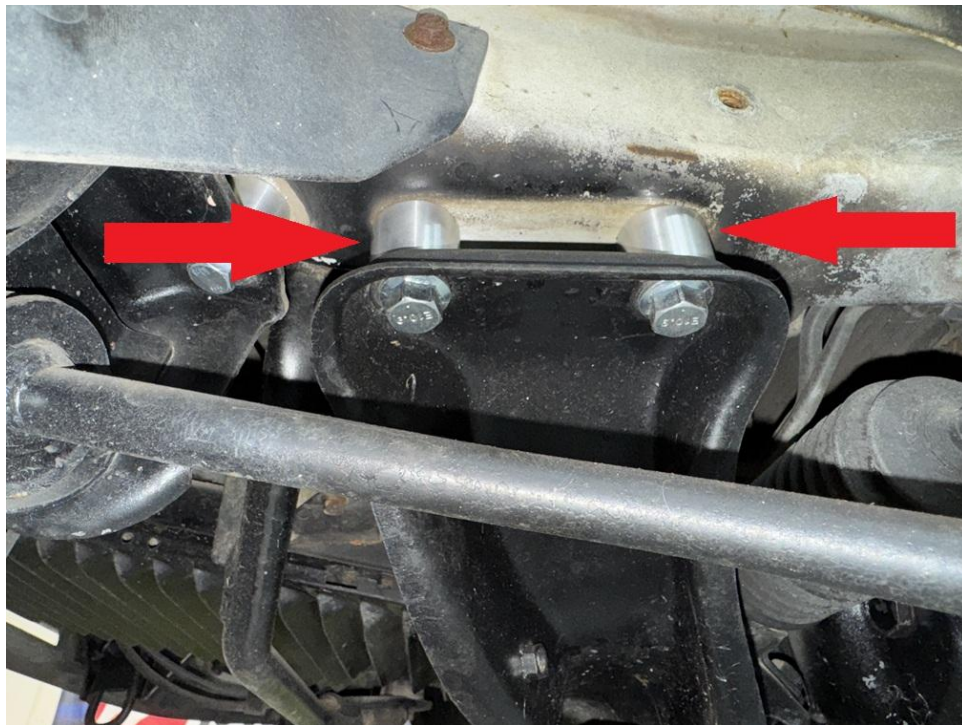
Step 7. Place 3 1x1 M10 spacers between driver side radius arm mount and chassis. Secure spacers with M10x40 bolts.



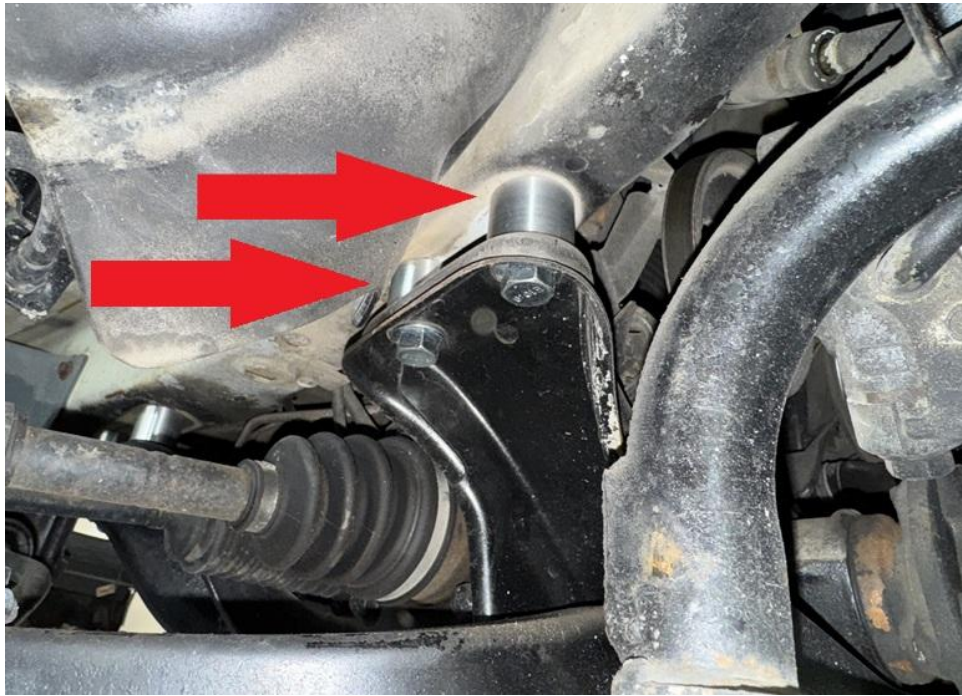
Step 8. Repeat radius arm spacer installation on passenger side.

Step 9. Carefully lower entire engine/subframe approximately 1 inch.

Step 10. Place 2 1.25x1 spacers between front crossmember/subframe and chassis. Secure with M12x45 bolts.

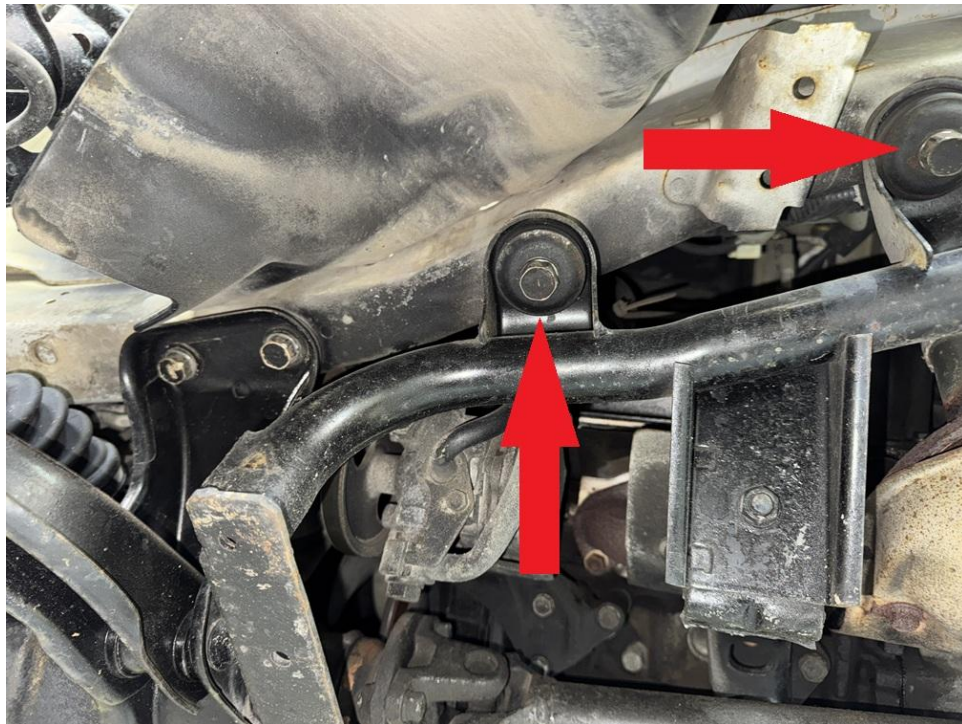


Step 11. Place 2 1.25x1 spacers between front crossmember/subframe and chassis. Secure with M12x45 bolts.

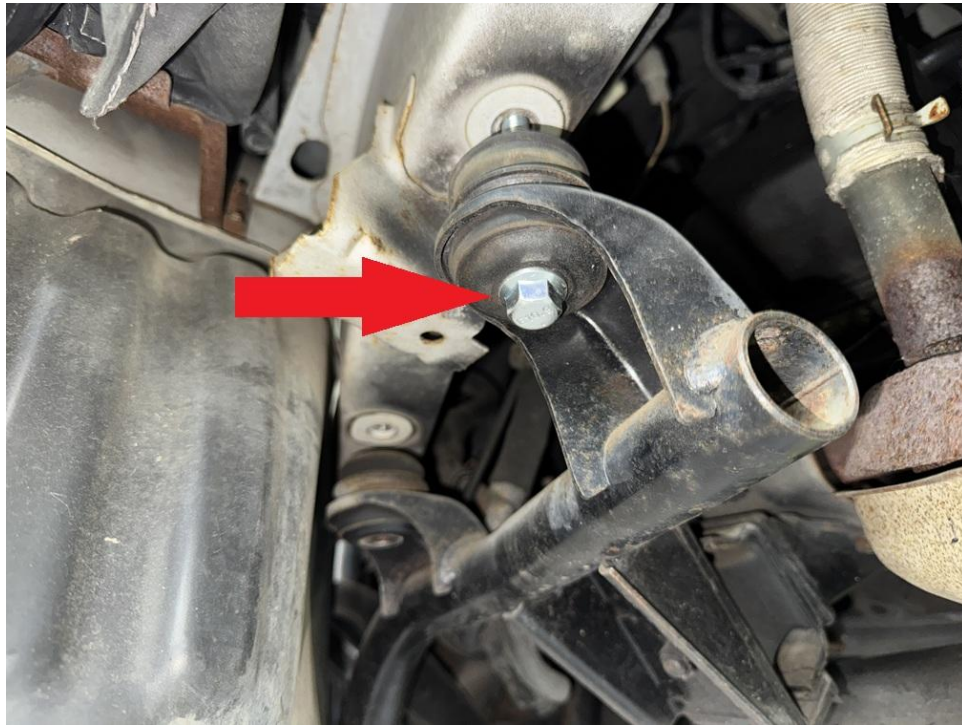


Step 12. Support transmission with jack.

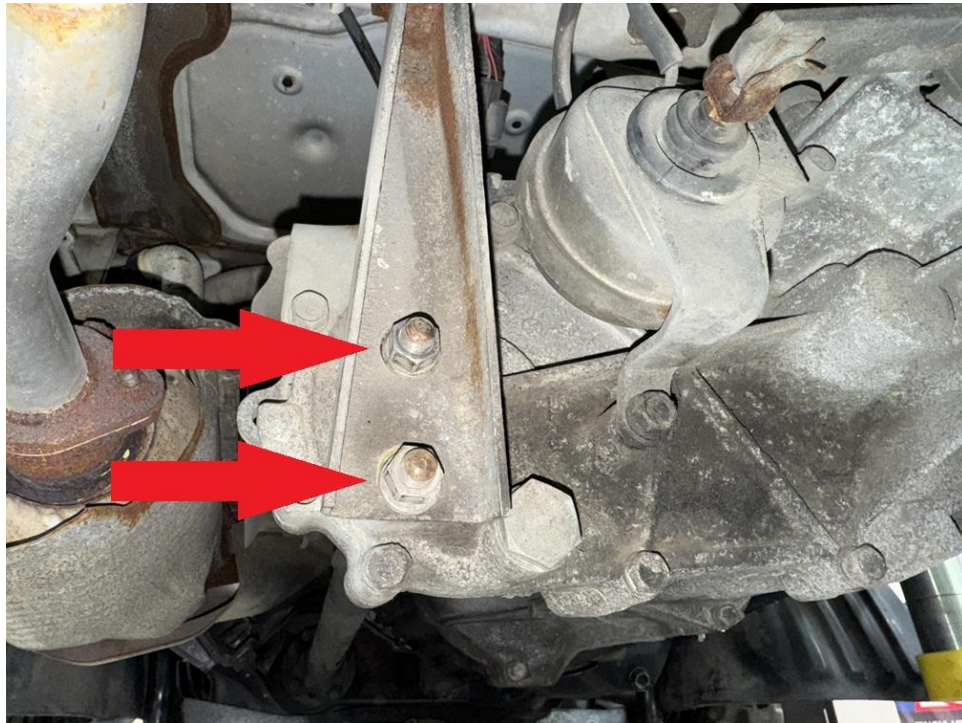
Step 13. Remove bolts holding transmission cradle to chassis.



Step 14. Temporarily install M10x80 bolt to keep subframe aligned. Repeat on passenger side.

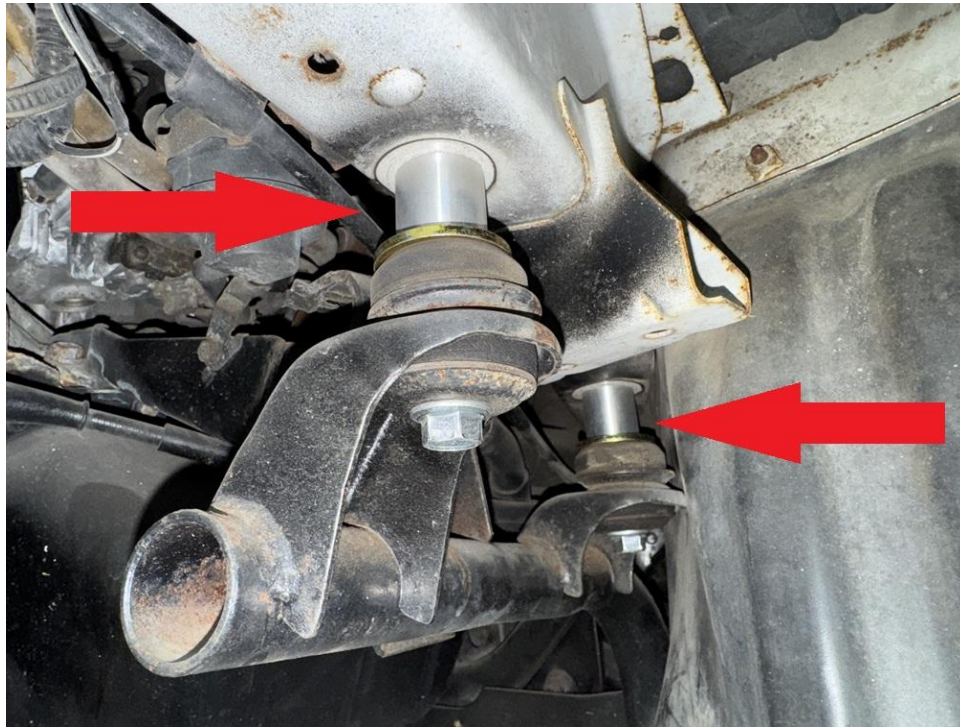


Step 15. Remove 2 14mm nuts holding lower transmission bracket. Repeat with upper transmission bracket. Pull both brackets free from the transmission.

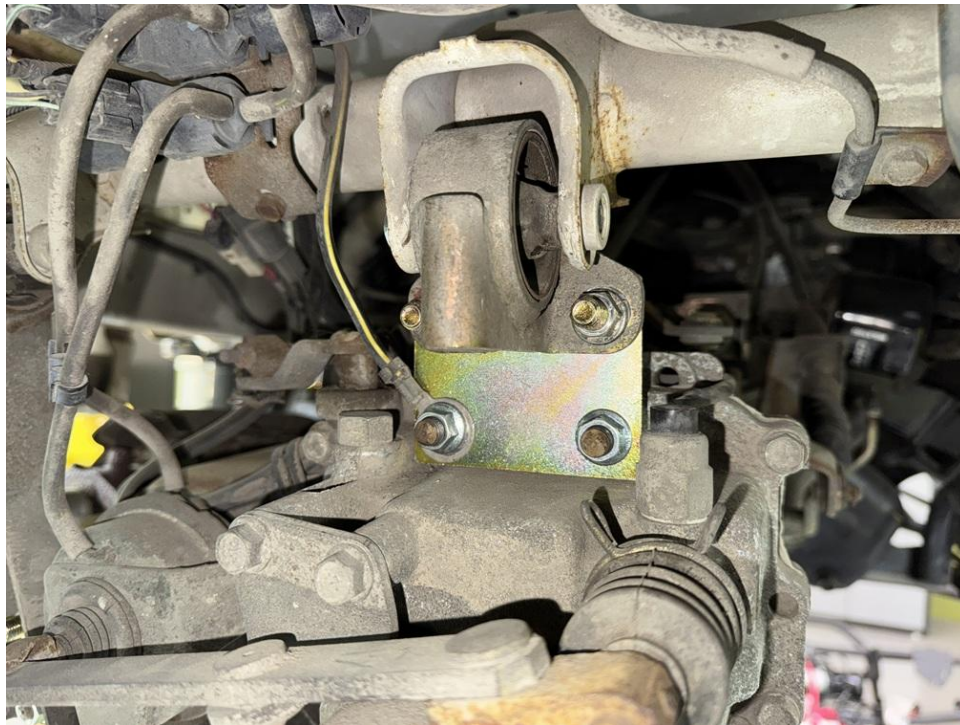


Step 16. Carefully lower transmission approximately 1 inch.

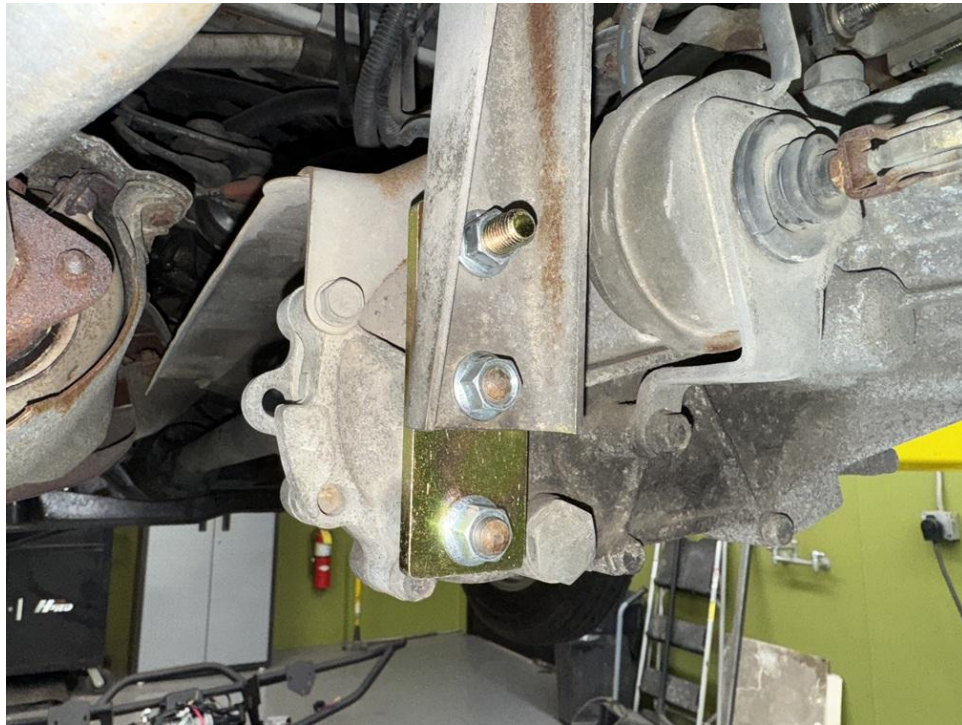
Step 17. Place 1x1 M10 spacers between transmission crossmember and chassis. Place M10 washers between crossmember and spacers as shown, and secure with M10x80 bolts. Repeat for all 4 bolts.



Step 18. Remove upper transmission mount from the vehicle, attach spacer plate to the mount with the OEM nuts, then reinstall mount and plate using nuts included with the kit. Be sure to re-attach ground wire. (see photo)



Step 19. Attach lower transmission bracket as shown. Secure with hardware included with the kit and OEM hardware.



Step 20. Remove 2 17mm bolts holding left side (passenger side) strut to wheel hub.



Step 21. Remove 12mm bolt holding brake lines to strut.



Step 22. Pull back carpet and lift up the bottom of the passenger side seat. Pull forward and up to remove seat bottom.



Step 23. Remove 3 12mm nuts holding strut to shock tower. Save hardware.



Step 24. Remove strut.

Step 25. Place spacer on top of strut and attach with original hardware.



Step 26. Install spacer/strut combo using hardware provided in the kit. Be sure spacer is oriented as shown!

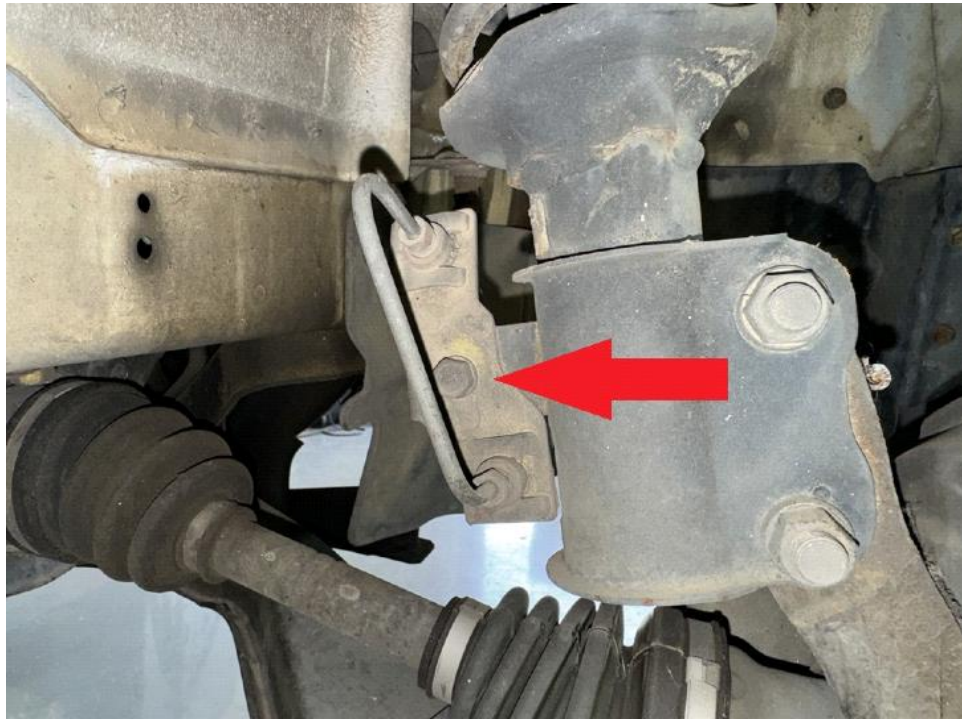


Step 27. Reinstall seat and carpeting.

Step 28. Reinstall 17mm bolts holding strut to wheel hub.



Step 29. Reinstall 12mm bolt holding brake lines to strut.



Step 30. Repeat installation process for driver (RIGHT) side.

Step 31. Reinstall front wheels.

Rear Installation:

Parts required: 2 extended shackles, 2 M10x100, 2 M10x120 bolts, 6 M10 nuts, 2 long bolt sleeves, 2 short bolt sleeves, 2 shock extension brackets, 2 shock bushings, 2 M10x60 bolts, 2 lift blocks, 2 extended U-bolts with nuts and washers

Tools Required: 3/8 ratchet, 14mm socket, 14mm wrench, 17mm socket, pry bar, plastic cutting tool.

Step 1. Lift vehicle and support with jack stands.

Step 2. Remove rear wheels.

Step 3. Support rear axle with floor jack.

Step 4. Remove nut holding left (PASSENGER) side rear shock to axle, slide shock off of stud.



Step 5. Lower rear axle about 2 inches, taking care not to stretch rear brake line.

Step 6. Remove 14mm nuts holding passenger side (LEFT) spring shackle in place, slide OEM shackle out of rubber bushings. It may be necessary to use a pry bar to remove the rear shackles.



Step 7. Slide 2 M10 bolt sleeves through OEM rubber bushings.

Step 8. Push new extended spring shackle over rubber bushings and align bolt holes.

Step 9. Install 2 M10x90 bolts through shackles and bolt sleeves, secure with 2 M10 nuts as shown. Torque bolts to 35 ft-lb.



Step 10. Trim mudflap to prevent contact with leaf spring as shown:



Step 11. Remove nuts holding U bolts to rear axle and carefully drop axle approximately 1.5 inches.

Step 12. Place leaf spring spacers between leaf springs as shown:



Step 13. Place shock extension onto shock mounting stud. Reuse OEM hardware.

Step 14. Slide shock bushing into rubber bushing on end of shock.

Step 15. Insert shock into shock extension as shown and secure with M10x60 bolt and M10 nut. Torque to 35 ft-lb.



Step 16. Repeat steps for driver side (RIGHT).

Step 17. Get a professional alignment.

Step 18. Find some trails!



Note: Installing a lift kit will change the suspension geometry and will require a 4 wheel alignment.

Warning: Failure to follow the procedures in these installation instructions may result in unsafe handling characteristics, damage to vehicle, or loss of control.

For tech support, please call 1-844- HRG LIFT (474-5438) from 8-4:30 EST Mon-Fri or email us 24/7 at support@hrgoffroad.com.

This product is intended for off-road use only!!

Copyright HRG Offroad 2026

Checklist:

- Minicab 2.5F **5599** (1L, 1R)
- Minicab Rear Spring Shackles **5601** (2)
- Minicab Spring Blocks **5605** (2)
- Minicab RSE **9053** (2)
- Minicab Upper Trans Bracket (1)

- ___ Minicab Lower Trans Bracket (1)
- ___ Minicab Bolt Sleeves (2 long, 2 short)
- ___ 1x1 M10 Spacers (10)
- ___ 1.25x1 M12 (8)

1 Bolt pack:

- ___ Extended U bolts (4)
- ___ 5/16 Washers (8)
- ___ 5/16 Nuts (8)

1 Bolt pack:

- ___ 2 M10x100
- ___ 2 M10x120
- ___ 2 M10x60
- ___ M10x40 (6)
- ___ M10x80 (4)
- ___ M10 fender washers (4)
- ___ 6 M10 nuts
- ___ M12x45 bolts (8)
- ___ HRG sticker
- ___ Rollover Sticker
- ___ Ruler
- ___ Instruction Card