



LS400

1990-2001 3 inch lift kit

Professional installation is recommended

IMPORTANT!

Lifting and modifying the suspension on your vehicle may result in drive line vibrations, damaged bushings, erratic handling characteristics, and shortened suspension component life. HRG Offroad recommends the following:

- Checking and/or replacing worn drive axles with new parts, not remanufactured.
- Checking and/or replacing all worn factory rubber bushings with urethane bushings, such as Prothane.
- Checking and/or replacing worn shock absorbers and bump stops.
- Performing a 4 wheel alignment after working on suspension components.

Lift kits may not be legal for use on public highways in your area. Please check local laws before installing!!

WARNING!

Lifted vehicles are more prone to rolling over.

Some HRG Offroad products are designed to improve off-road capabilities. Modifying the suspension of your vehicle may result in handling characteristics that are different from a factory equipped vehicle. Extreme care must be used to prevent a rollover or loss of control. Always operate your modified vehicle at a reduced speed to ensure your ability to maintain control under all driving conditions. Driving your vehicle in an unsafe manner may result in serious injury or death. HRG Offroad lift kits are designed and tested to work together. HRG Offroad does not recommend combining this lift kit with any other type of suspension or body lift. Always wear your seat belt.

Included in the kit:

- 2 2.0" Front spacers 5501
- 2 2.5" Rear spacers 5500
- 6 M10x25mm bolts
- 6 M10 nuts

Tools required:

Floor jack, lug wrench, metric socket set to 19mm, metric wrench set to 19mm, heavy hammer, pliers, impact wrench, pry bar, torque wrench.

Installation time: Approximately 3-5 hours

Front installation:

Step 1. Use the floor jack to lift the car and support it with jack stands.

Step 2. Remove front wheels.

Step 3. Break the driver side inner lower control arm bolt loose. (do not remove)

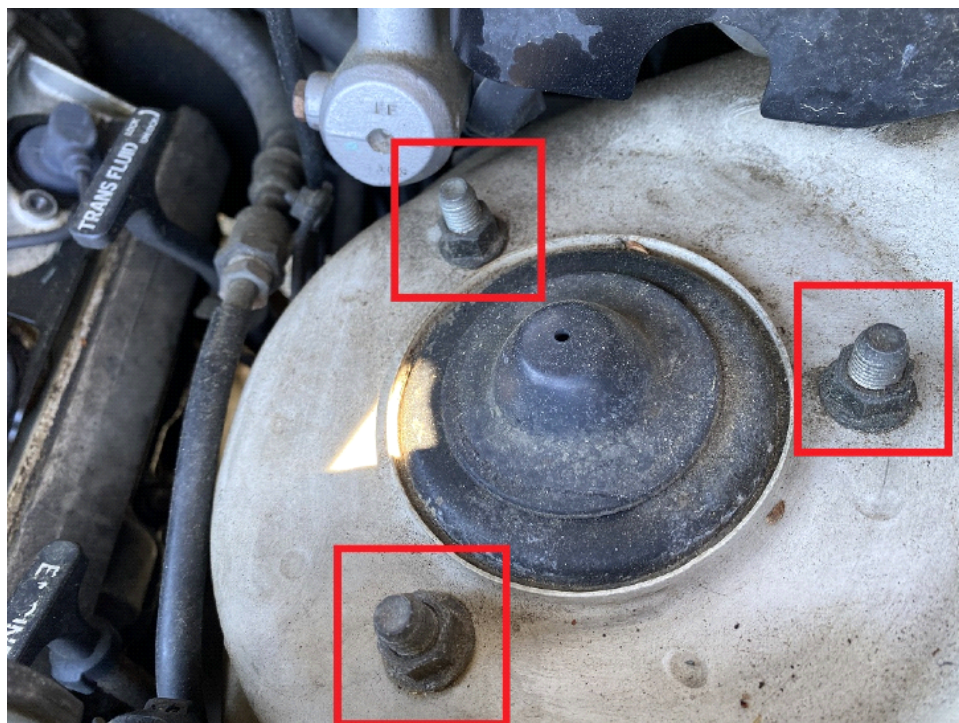
Step 4. Loosen castle nut on upper ball joint. (do not remove)

Step 5. Strike spindle with heavy hammer to dislodge upper ball joint. (see photo)



Step 6. Once ball joint has been dislodged, remove castle nut.

Step 7. Remove 3 bolts holding strut to shock tower.



Step 8. Remove lower shock mount bolt.



Step 9. Remove strut.

Step 10. Install front lift spacer to the shock using the original hardware.

Step 11. Re-install strut in reverse order, using supplied hardware to attach strut to shock tower.

Step 12. Using floor jack, compress suspension to line up upper ball joint.

Step 13. Install ball joint castle nut.

Step 14. Repeat steps 3-13 on passenger side.

Step 15. Tighten inner lower control arm bolts.

Rear Installation:

Step 1 release clips on rear lower seat cushion, pull up and remove.



Release tabs

Step 2. Remove 2 14mm bolts holding inner seat belt buckles to floor.

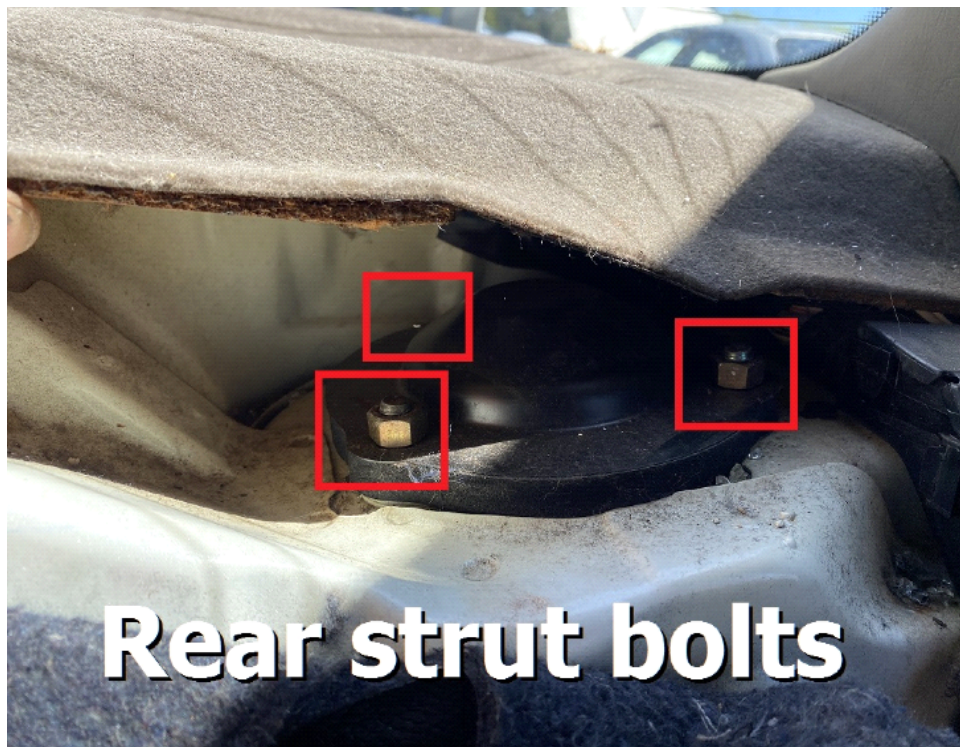


Remove bolt

Step 3. Remove 4 12mm bolts holding seat back to floor.

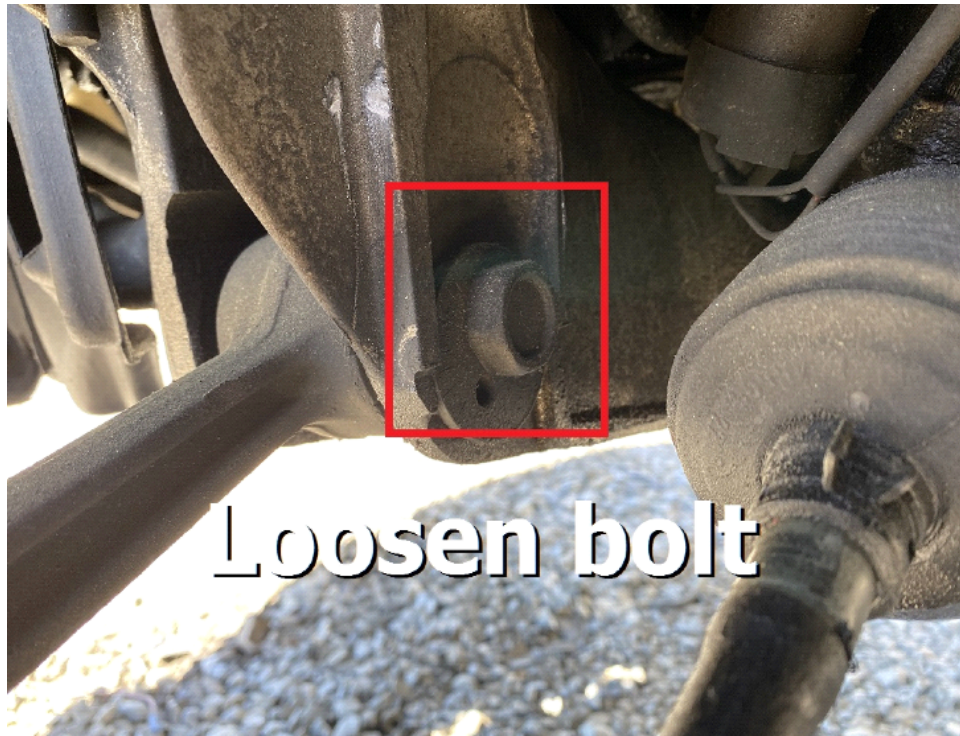


Step 4. Lift up rear seat back to remove, exposing rear strut mounting bolts. These will be removed in step 9.



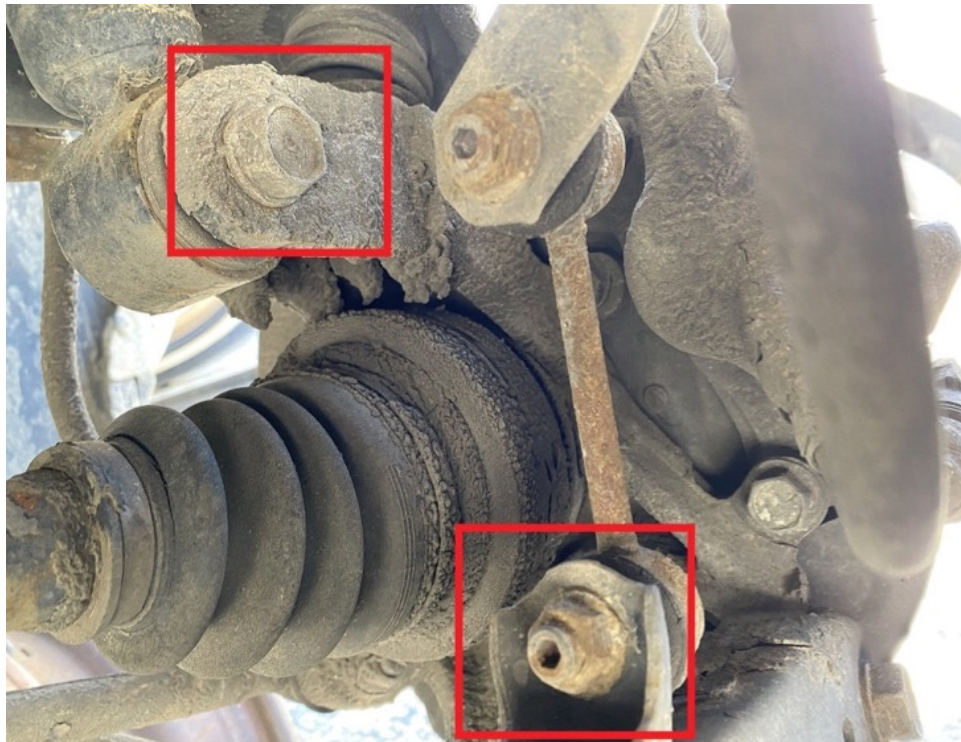
Step 5. Remove rear wheels.

Step 6. Loosen inner lower control arm bolt.



Step 7. Remove driver side rear sway bar end link.

Step 8. Remove lower strut bolt.



Step 9. Remove 3 nuts holding strut to rear shock tower.

Step 10. Remove strut.

Step 11. Attach lift spacer to strut using OEM hardware.

Step 12. Install strut to rear shock tower using hardware provided in the kit

Step 13. Reinstall lower shock bolt.

Step 14. Repeat steps 6-13 on passenger side.

Step 15. Re-attach sway bar end links on both sides.

Step 16. Double check all bolts with vehicle resting on its suspension, refer to Lexus service manual for torque specifications.

Step 17. Get a professional alignment.

Note: Installing a lift kit will change the suspension geometry and will require a 4 wheel alignment.

Warning: Failure to follow the procedures in these installation instructions may result in unsafe handling characteristics, damage to vehicle, or loss of control.

For tech support, please call 1-844- HRG LIFT (474-5438) from 8-4:30 PM EST Mon-Thu 8-3:30 PM Fri or email us 24/7 at support@hrgoffroad.com.

This product is intended for off-road use only!!

Copyright HRG Offroad 2026