



## 2013-2017 Subaru Crosstrek/XV 2" lift kit installation guide

*Professional installation is recommended*

### **IMPORTANT!**

Lifting and modifying the suspension on your vehicle may result in drive line vibrations, damaged bushings, erratic handling characteristics, and shortened suspension component life. HRG Offroad recommends the following:

- Checking and/or replacing worn drive axles with new parts, not remanufactured.
- Checking and/or replacing all worn factory rubber bushings with urethane bushings, such as Prothane.
- Checking and/or replacing worn shock absorbers and bump stops.
- Performing a 4 wheel alignment after working on suspension components.

**Lift kits may not be legal for use on public highways in your area. Please check local laws before installing!!**

### **WARNING!**

***Lifted vehicles are more prone to rolling over.***

Some HRG Offroad products are designed to improve off-road capabilities. Modifying the suspension of your vehicle may result in handling characteristics that are different from a factory equipped vehicle. Extreme care must be used to prevent a rollover or loss of control. Always operate your modified vehicle at a reduced speed to ensure your ability to maintain control under all driving conditions. Driving your vehicle in an unsafe manner may result in serious injury or death. HRG Offroad lift kits are designed and tested to work together. HRG Offroad does not recommend combining this lift kit with any other type of suspension or body lift. Always wear your seat belt.

Recommended tire/wheel sizes:

Stock: 225/55/17 (26.7")

17" wheels

235/55/17 (27.2")

245/55/17 (27.6")

215/65/17 (28")

235/60/17 (28.1")

225/65/17 (28.5") May require fender trimming

15" wheels

225/70/15 (27.7")

215/75/15 (27.7")

235/70/15 (28")

235/75/15 (28.9") Will require fender trimming

***Be sure to check fitment prior to installation! These sizes are only suggestions. HRG is not responsible for improperly fitted wheels/tires!***

**Included in the kit:**

2 2.0" (51mm) offset lift spacers (front) 5651  
2 2.0" (51mm) lift spacers (rear) 5662 or 5661  
6 M8 nuts (front)  
4 M10 nuts (rear)  
2 BLB-2 (rear brake line bracket)  
2 M8x16 bolts (brake line brackets)  
2 M8 nuts (brake line brackets)  
4 2.75x2 M14 spacers (rear subframe)  
4 M14x200 bolts (rear subframe)  
4 0.75x1.5 M8 spacers (rear subframe braces)  
4 M8x60 bolts (rear subframe braces)  
4 1x2 M10 spacers (rear subframe braces)  
4 M10x70 bolts (rear subframe braces)  
3 extended exhaust hangers

**Tools required:**

Floor Jack, lug wrench, metric socket set up to 21mm, metric wrench set up to 19mm, common pliers, torque wrench.

***Approximate installation time: 3-4 hours***

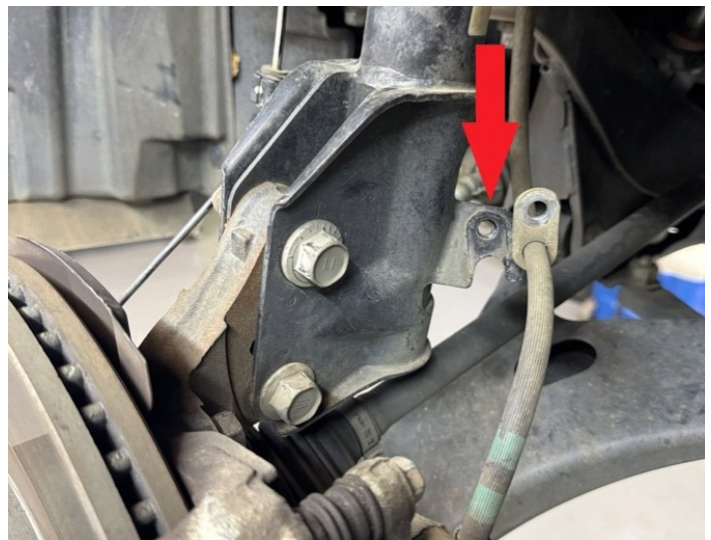
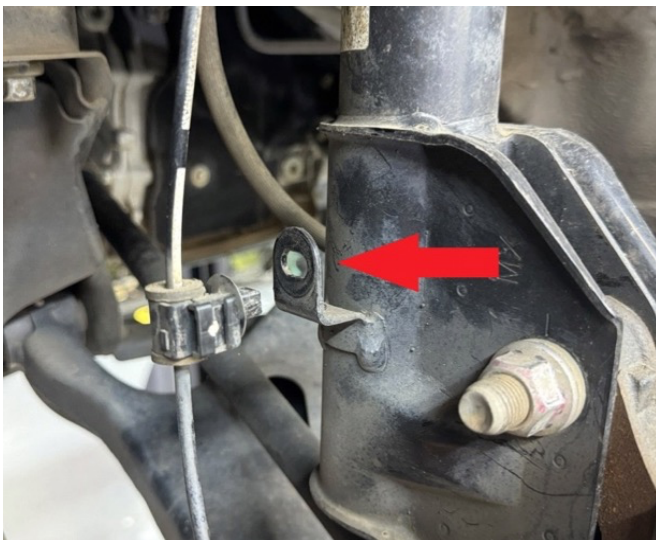
**Skill level: Easy**

**Front installation:**

Step 1. Lift vehicle and support with jack stands.

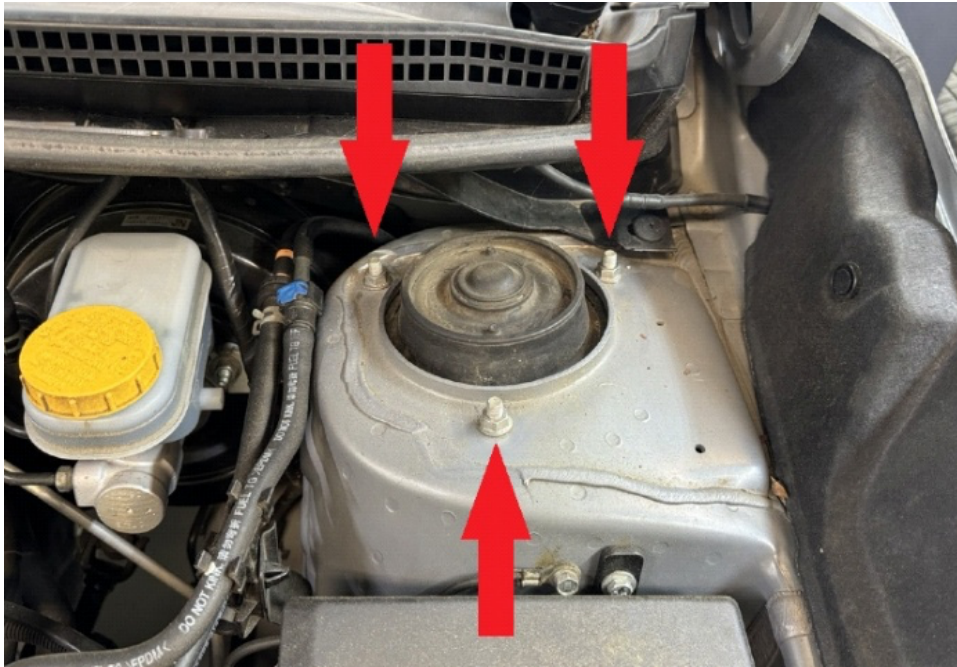
Step 2. Remove wheels.

Step 3. Remove bolts holding the brake line and un-clip ABS wiring from the driver side strut.



Step 4. Using a 19mm socket, remove 2 large nuts on bottom of strut, and tap bolts out with a large hammer.

Step 5. Remove 3 M8 nuts from strut top to allow strut to drop out. (save hardware).



Step 6. Repeat steps 3-5 for passenger side. Disassembling both sides will allow the suspension to drop down without removing the sway bar links.

Step 7. Mount driver side (L) spacer to strut using original hardware saved from step 5.





Step 8. Slide driver side strut back into place and mount to vehicle using hardware provided in the kit. Torque bolts to 35 ft-lb. ***Be sure L is facing as shown in the photo.***



Step 9. Bolt brake and ABS lines back to strut.

Step 10. Reinstall lower main strut bolt in bottom hole, install camber bolt in TOP HOLE.

Step 11. Repeat installation process for passenger side.

Step 12. Torque main strut bolts to 95 ft-lb.

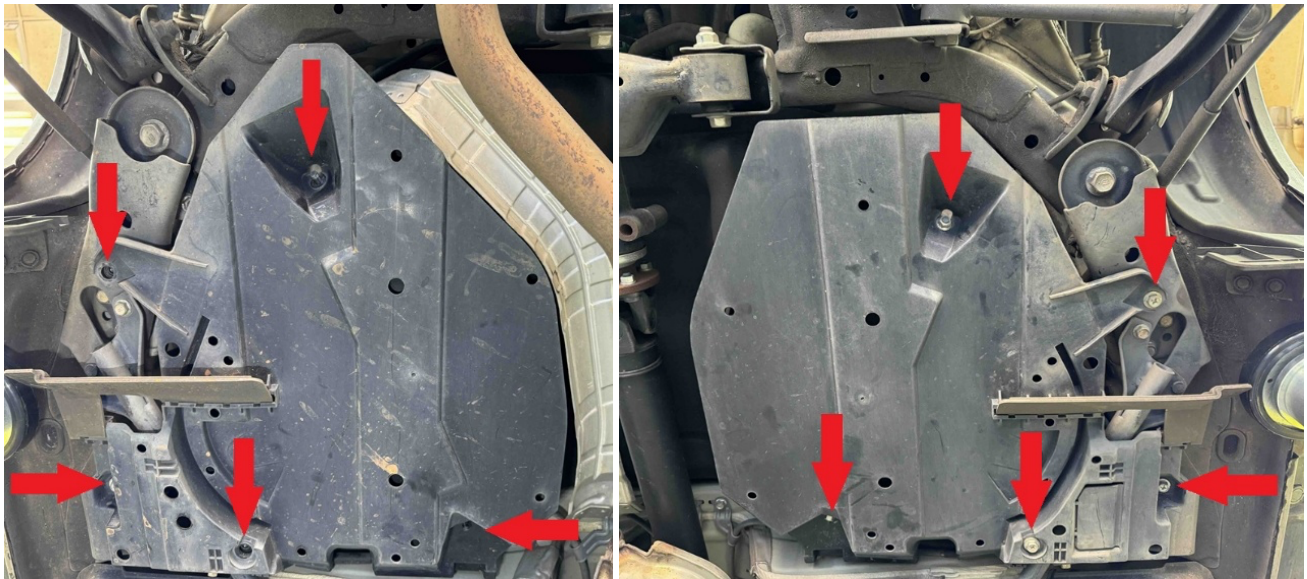
Step 13. Reinstall wheels.

### **Rear Installation:**

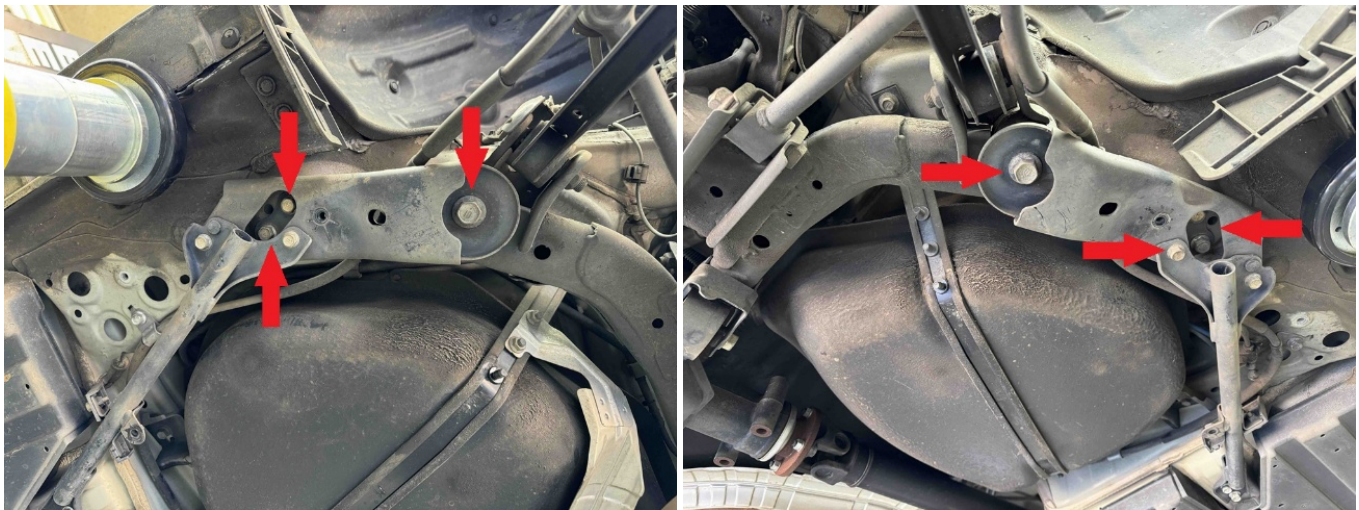
Step 1. Lift vehicle and support with jack stands.

Step 2. Locate and remove 10mm bolts and nuts holding gas tank covers.





Step 3. Locate and remove bolts holding rear subframe brace bars (see photo)



Step 4. Using a floor jack or screw jack, support rear subframe under rear differential.

Step 5. Locate and remove 2 of the 4 main rear subframe bolts. Replace with 2 new bolts provided in the kit to keep the subframe square and in line while lowering.





Step 6. Remove remaining 2 main subframe bolts and carefully lower rear subframe approximately 2 inches.



Step 7. Place 2.75x2 M14 spacer between subframe and body, install M14x200 bolt, repeat process for both sides. Torque bolts to 85+ Ft-lb.

Step 8. Repeat step 7. for remaining 2 subframe bolts



Step 9. Place 2 1x2 M10 spacers between subframe bracket and body, install 2 M10x70 bolts. Torque to 50 Ft-Lb.



Step 10. Reinstall plastic gas tank covers. Some of the original bolts will not be reused. The support bars will install on the outside of the covers as shown in photo.



Step 11. Connect support bar to subframe bracket using original hardware. Torque to 30 Ft-lb.

Step 12. Place 2 0.75x1.5 spacers between forward end of support bar and body, secure with M8x60 bolts. Torque to 30 Ft-lb.





Step 13. Pull up cargo liner and remove plastic panels to gain access to rear strut bolts.



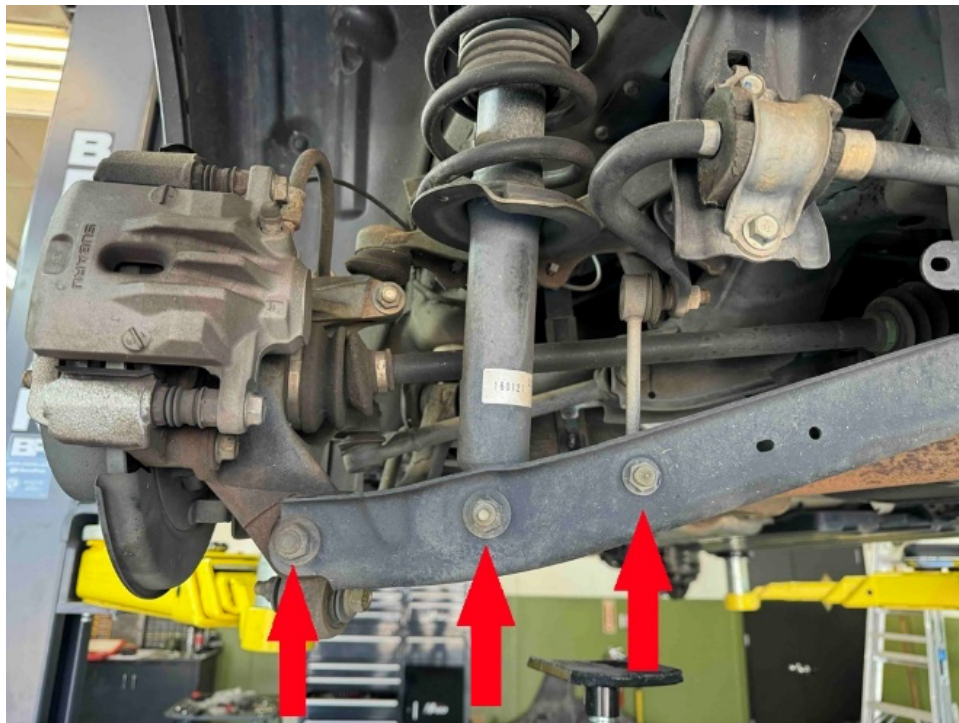
Step 14. Remove 2 nuts holding rear struts to vehicle. (Save hardware)



Step 15. Lift vehicle and support with jack stands.

Step 16. Remove wheels.

Step 17. Remove bolts holding driver side sway bar link, rear strut, and wheel hub to driver side lower control arm. (see photo)

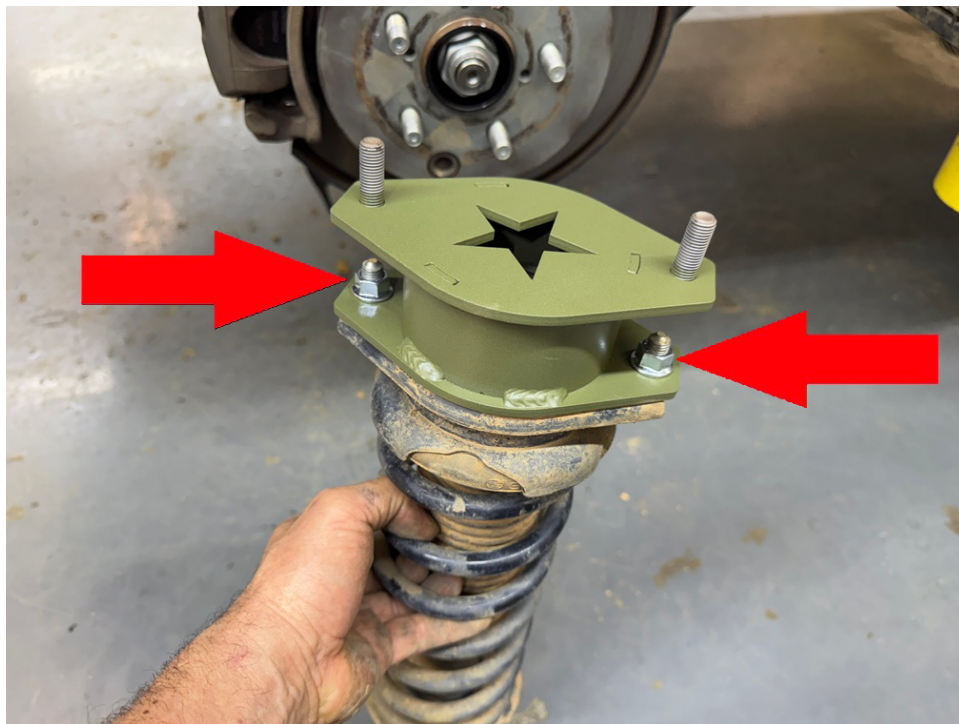


Step 18. Remove brake line from hub to prevent tension on the hose while lowering wheel hub.





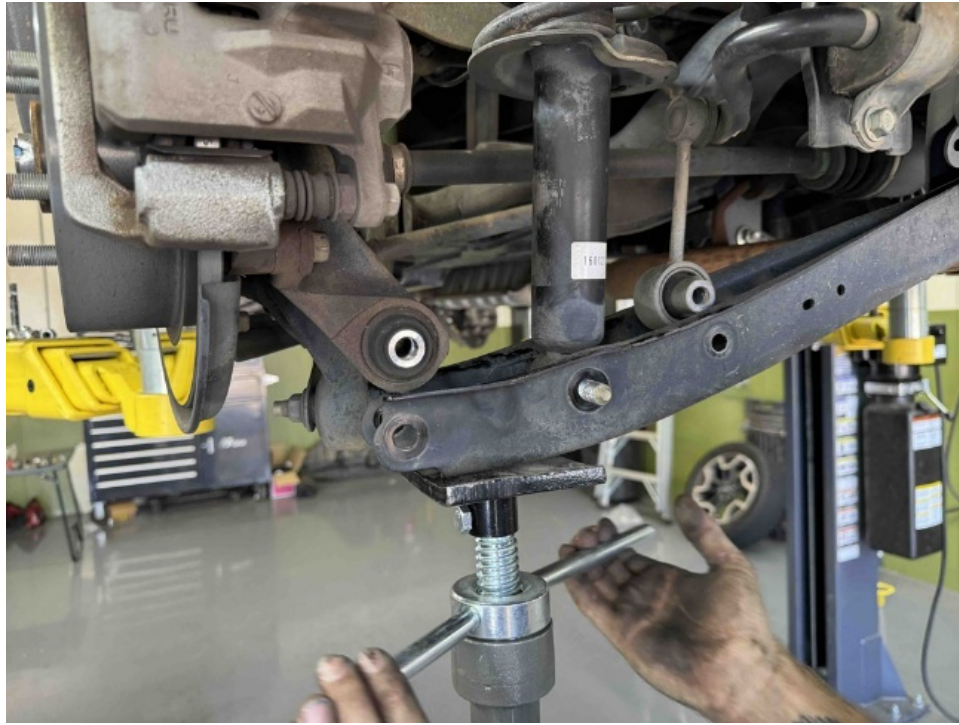
Step 19. Mount the spacer to the strut using the nuts provided in the kit.



Step 20. Slide strut back into vehicle and install the strut assembly using the nuts saved from step 2.

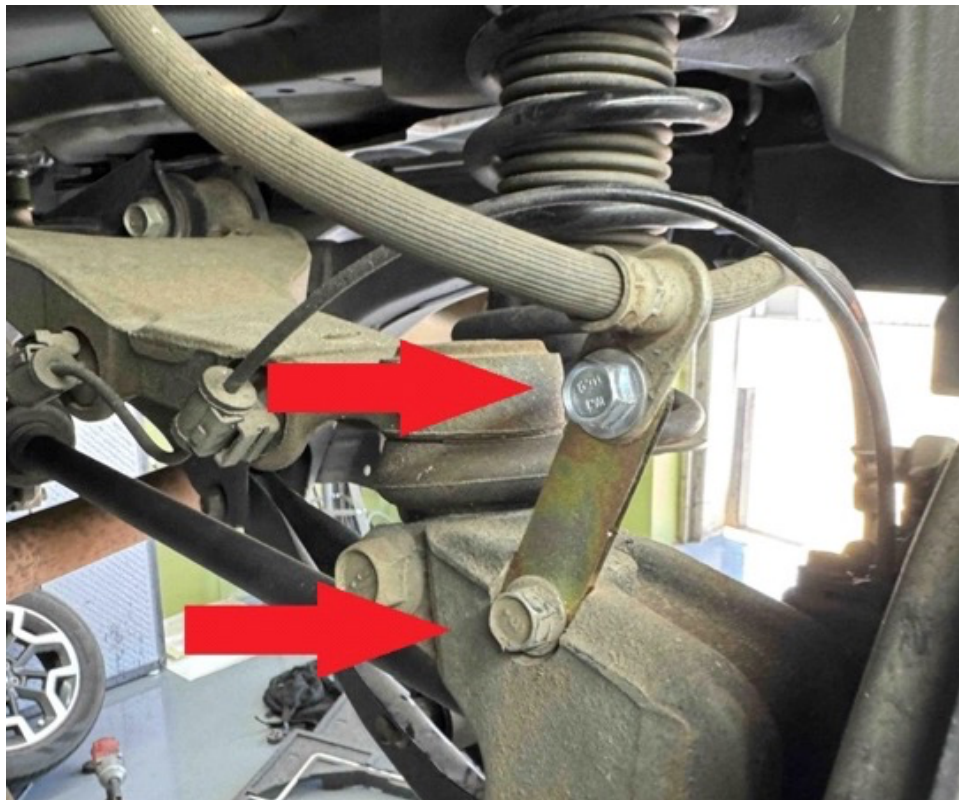
Step 21. Using a floor jack, lift the lower control arm until the **rear strut** lines up in the mounting hole, install mounting bolt.





Step 22. Repeat step 21 until the **rear lower control arm** lines up with the wheel hub and sway bar end link, install mounting bolts. Do not tighten bolts all the way at this time.

Step 23. Install BLB-2 rear brake line extension bracket in factory brake line mounting location. Torque bolts to 25 ft-lb.



Step 24. Soak OEM muffler hangers with WD40, remove OEM hangers.



Step 25. Install new muffler hangers as shown in photo:



Step 26. Reinstall interior panels.

Step 27. Reinstall wheels and lower vehicle.

Step 28. Once vehicle is resting on its suspension, tighten all bolts in lower control arm. Torque 3 largest bolts to 85 Ft-lb and tighten sway bar end link bolt to 53 Ft-lb.

Step 29. Get a professional alignment.

Step 30. Find some trails!!





**Note: Installing lift spacers will change the suspension geometry and will require a 4 wheel alignment.**

**Warning: Failure to follow the procedures in these installation instructions may result in unsafe handling characteristics, damage to vehicle, or loss of control.**

**For tech support, please call 1-844- HRG LIFT (474-5438) from 8-4:30 PM EST Mon-Thu 8-3:30 PM Fri or email us 24/7 at [support@hrgoffroad.com](mailto:support@hrgoffroad.com).**

***This product is intended for off-road use only!!***

Copyright HRG Offroad 2026