



## 2003-2008 2" lift kit installation guide

*Professional installation is recommended*

### **IMPORTANT!**

Lifting and modifying the suspension on your vehicle may result in drive line vibrations, damaged bushings, erratic handling characteristics, and shortened suspension component life. HRG Offroad recommends the following:

- Checking and/or replacing worn drive axles with new parts, not remanufactured.
- Checking and/or replacing all worn factory rubber bushings with urethane bushings, such as Prothane.
- Checking and/or replacing worn shock absorbers and bump stops.
- Performing a 4 wheel alignment after working on suspension components.

**Lift kits may not be legal for use on public highways in your area. Please check local laws before installing!**

### **WARNING!**

***Lifted vehicles are more prone to rolling over.***

Some HRG Offroad products are designed to improve off-road capabilities. Modifying the suspension of your vehicle may result in handling characteristics that are different from a factory equipped vehicle. Extreme care must be used to prevent a rollover or loss of control. Always operate your modified vehicle at a reduced speed to ensure your ability to maintain control under all driving conditions. Driving your vehicle in an unsafe manner may result in serious injury or death. HRG Offroad lift kits are designed and tested to work together. HRG Offroad does not recommend combining this lift kit with any other type of suspension or body lift. Always wear your seat belt.

Recommended tire/wheel sizes:

Stock	205/70/15 (26.3") or 215/60/16 (26.3")
15" wheels	
	205/75/15 (27.0")
	225/70/15 (27.4")
	215/75/15 (27.7")
	225/75/15 (28.2")
16" wheels	
	215/70/16 (27.8")
	225/70/16 (28.4")
	225/75/16 (29.2") (CUTTING REQUIRED)

***Be sure to check fitment prior to installation! These sizes are only suggestions. HRG is not responsible for improperly fitted wheels/tires!***

**Included in the kit:**

- 2 2" (50mm) lift spacers (front) 5651
- 2 2" (50mm) lift spacers (rear) 5655

6 M8 nuts (front)  
6 M8 nuts (rear)  
2 14mm offset camber adjustment bolts  
2 brake line brackets  
4 2.75x2 M14 spacers  
4 M14x200 bolts  
2 2 inch (51mm) trailing arm spacers (rear trailing arms)  
6 M12x90 bolts (rear trailing arms)

### Tools required:

Floor Jack, lug wrench, metric socket set up to 21mm, metric wrench set up to 19mm, cutoff wheel, common pliers, torque wrench, paint pen.

**Installation time:** 3-4 hours

**Skill level:** Easy

### Front installation:

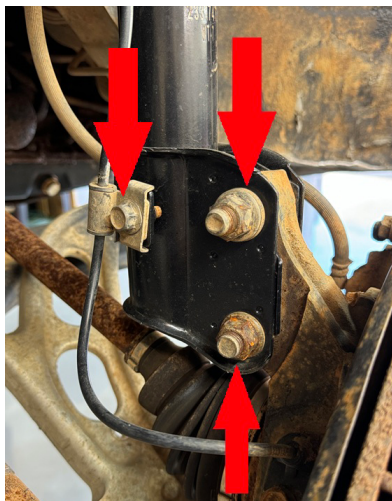
**TIP:** Installation is made easier by disassembling suspension on both sides before installing spacers. Disconnecting the sway bars during the installation may be necessary.

Step 1. Lift vehicle and support with jack stands.

Step 2. Remove front wheels.

Step 3. Remove 2 19mm bolts in bottom of strut. (see photo below)

Step 4. Remove 12mm bolts holding ABS wires to the driver side strut (if applicable).



Step 5. Remove brake line from strut. (see photo below)



Step 6. Remove the 3 12mm nuts from top of strut to allow strut to drop out. (Save hardware)



Step 7. Disconnect front sway bar link.



Step 8. Attach spacer to strut using hardware provided in the kit. (See photo)

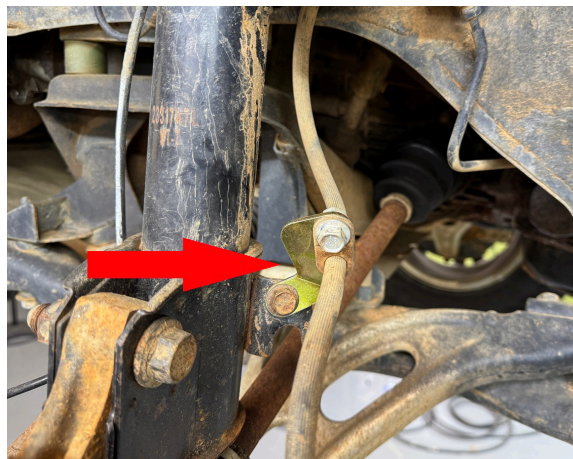


Step 9. Lift strut back into place with the "L" (driver side) facing toward the front bumper and loosely install the original 12mm nuts saved from disassembly. (see photo)



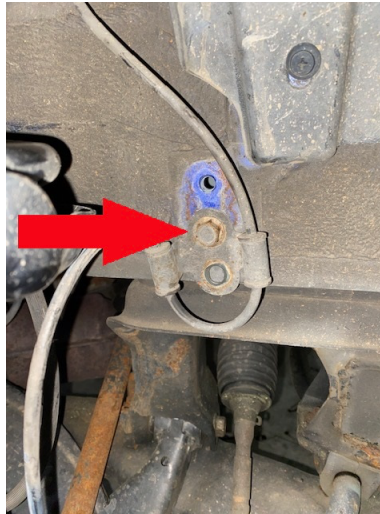
Step 10. Install lower strut bolts.

Step 11. Install driver side brake line relocation bracket. (see photo)



Step 12. Reinstall ABS wiring. Relocate mounting bolt as shown:





Step 13. Torque all nuts and bolts to spec. (Refer to factory service manual)

Step 14. Repeat installation process for passenger side.

Step 15. After both sides are lifted, reconnect sway bar links.

Step 16. Reinstall wheels.

### **Rear Installation:**

Step 1. Lift vehicle and support with jack stands.

Step 2. Remove rear wheels.

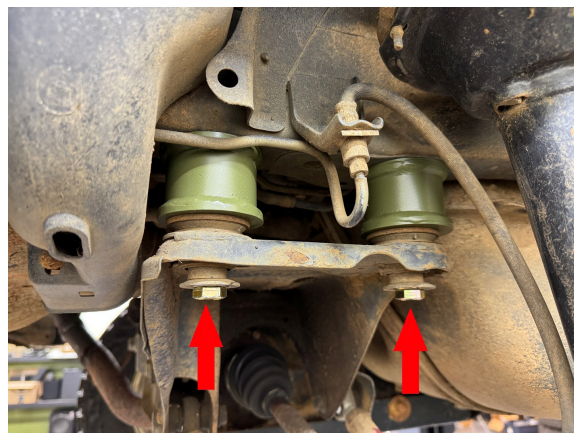
Step 3. Remove 3 17mm bolts in both driver and passenger side rear trailing arm mounting brackets.

Step 4. Support rear differential with a floor jack or pole jack.

Step 5. Locate and remove main subframe bolts, starting with driver side front. Temporarily install M14x200 bolts included in the kit. Repeat process for the other 3 subframe bolts.

Step 6. Carefully lower rear subframe approximately 2 inches.

Step 7. Place 2.75x2 spacers between rear subframe and chassis. Permanently install M14x200 Bolts.



Step 8. Place the trailing arm spacer between driver side trailing arm and body.



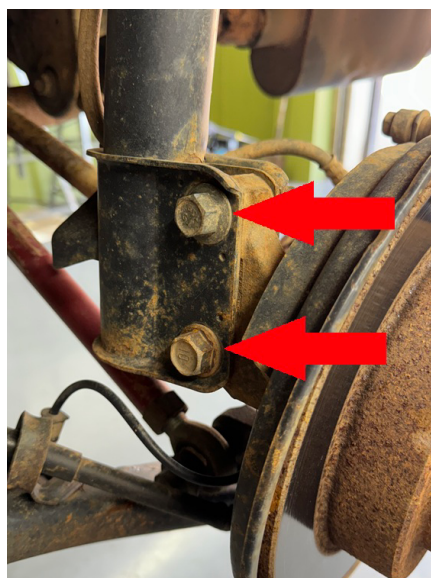
Step 9. Using a floor jack, lift the rear suspension so that the bolt holes for the trailing arm line up with the body, install 3 M12x90 bolts.

Step 10. Repeat installation process for passenger side.

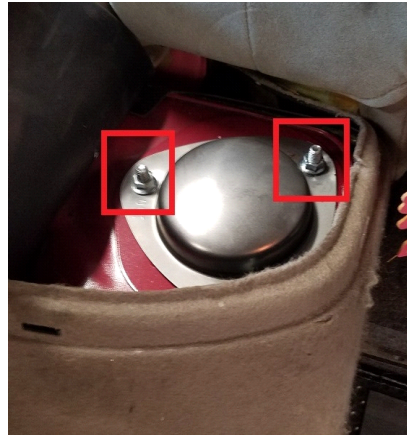
Step 11. Remove brake line and ABS wiring from strut.



Step 12. Remove 2 19mm bolts at bottom of strut. Save 1 bolt for reinstallation.

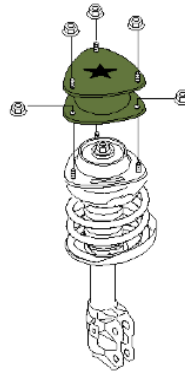


Step 13. Remove 3 12mm nuts inside the rear cargo area to allow strut to be removed. (Save hardware.)



Step 8. Mount the spacer to the strut using the M8 nuts provided in the kit. (See diagram)

**SUBARU LIFT SPACER  
INSTALLATION DIAGRAM  
(C) HRG OFFROAD 2022**



Step 9. Lift strut back into vehicle, line up the 3 bolts through the strut tower and loosely install the 3 12mm nuts saved from disassembly.

Step 10. Using a floor jack, lift the bottom of the brake assembly until one of the 19mm bolts can be reinstalled in the bottom hole. Use camber bolt included in kit for top hole.

Step 11. Reinstall ABS wire (if applicable).

Step 12. Reinstall brake line into brake line bracket.

Step 13. Reconnect sway bar (if applicable).

Step 17. Referring to factory service manual, torque all bolts to spec.

Step 18. Reinstall rear wheels.

Step 19. Get a professional alignment.

**NOTE: FAILURE TO PERFORM A WHEEL ALIGNMENT WILL RESULT IN DECREASED TIRE LIFE, DECREASED FUEL MILEAGE, AND UNSAFE HANDLING CHARACTERISTICS!**

**Warning: Failure to follow the procedures in these installation instructions may result in**

**unsafe handling characteristics, damage to vehicle, or loss of control.**

**For tech support, please call 1-844- HRG LIFT (474-5438) from 8-4:30 PM EST Mon-Thu 8-3:30 PM Fri or email us 24/7 at [support@hrgoffroad.com](mailto:support@hrgoffroad.com).**

***This product is intended for off-road use only!!***

Copyright HRG Offroad 2025