



**1.5-inch lift kit installation guide**  
*Professional installation is recommended*

**IMPORTANT!**

Lifting and modifying the suspension on your vehicle may result in drive line vibrations, damaged bushings, erratic handling characteristics, and shortened suspension component life. HRG Offroad recommends the following:

- Checking and/or replacing worn drive axles with new parts, not remanufactured.
- Checking and/or replacing all worn factory rubber bushings with urethane bushings, such as Prothane.
- Checking and/or replacing worn shock absorbers and bump stops.
- Performing a 4 wheel alignment after working on suspension components.

**Lift kits may not be legal for use on public highways in your area. Please check local laws before installing!!**

**WARNING!**

***Lifted vehicles are more prone to rolling over.***

Some HRG Offroad products are designed to improve off-road capabilities. Modifying the suspension of your vehicle may result in handling characteristics that are different from a factory equipped vehicle. Extreme care must be used to prevent a rollover or loss of control. Always operate your modified vehicle at a reduced speed to ensure your ability to maintain control under all driving conditions. Driving your vehicle in an unsafe manner may result in serious injury or death. HRG Offroad lift kits are designed and tested to work together. HRG Offroad does not recommend combining this lift kit with any other type of suspension or body lift. Always wear your seat belt.

Recommended tire/wheel sizes:

Stock: 145/80/12

155/80/13

175/70/14

***Be sure to check fitment prior to installation! These sizes are only suggestions. HRG is not responsible for improperly fitted wheels/tires!***

**Included in the kit:**

- 2 1.5" offset front lift spacers 5740
- 2 Rear shock extensions 9052
- 2 1.0" rear spring spacer 5741
- 1 Steering connector bracket
- 4 0.5x1 M6 spacers (radiator)
- 4 M6x40 bolts (radiator)
- 2 M10x50 bolts (rear shock extensions)
- 2 M10 nuts (rear shock extensions)
- 8 1.25x1 M12 spacers (front subframe)
- 2 1x1 M10 spacers (front differential)
- 2 M10x120 bolts (front differential)

8 M12x45 bolts (front subframe)

1 M10x50 bolt (steering bracket)

1 M10 nut (steering bracket)

**Tools required:**

Floor jack, lug wrench, metric socket set to 30mm, metric wrench set to 19mm, impact gun, pliers, heavy hammer, torque wrench.

**Note to installer:** Some bolts removed to install lift kit will be replaced with longer bolts. Some OEM hardware will be reused.

**Approximate installation time: 1-3 hours**

**Skill level: Easy**

## Installation video:

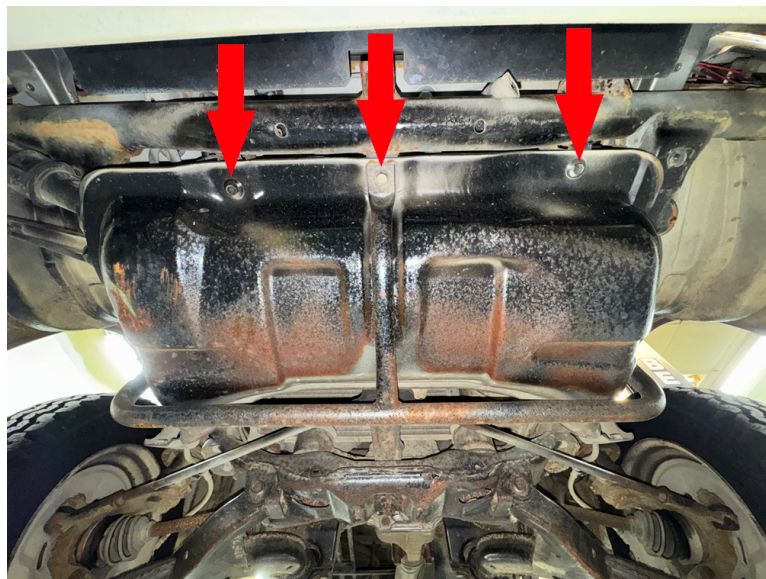


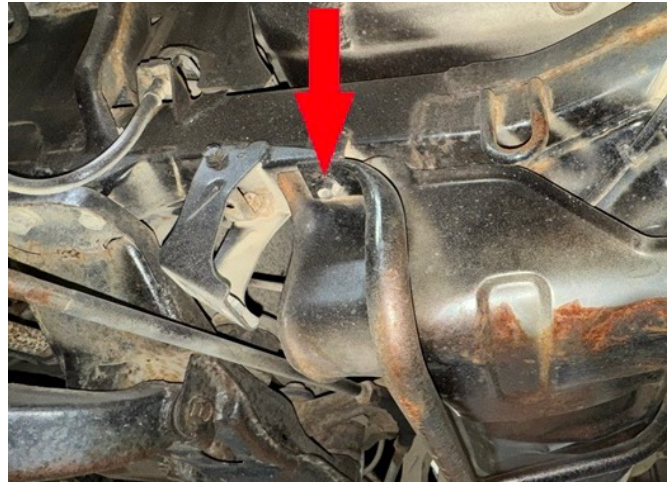
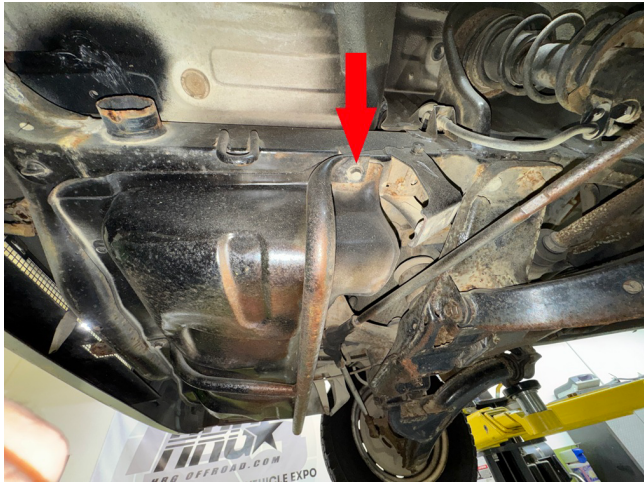
### Front installation

**Parts needed: L+R front spacers, 5 M10 nuts, 8 1.25x1 M12 spacers, 8 M12x45 bolts, 4 05.x1 M6 spacers, 4 M6x40 bolts, 2 1x1 M10 spacers, 2 M10x110 bolts, 1 M10x40 bolt, steering connector bracket.**

Step 1. Lift vehicle and remove wheels.

Step 2. Remove OEM splash shield and bars.





Step 3. Remove clamp holding steering linkage shroud, remove shroud. Shroud will not be reused.



Step 4. Remove bolt holding steering linkage to OEM steering rack connector bracket.

Step 5. Remove nut holding OEM steering rack connector bracket to steering rack.

Step 6. Place new connector bracket in place of original one.



Step 7. Reattach steering linkage to bracket using hardware provided in the kit.

Step 8. Support front subframe with floor jack or screw jack.



Step 9. Remove bolts holding subframe to body, and temporarily thread M12x45 bolts in their place, 1 on driver side and 1 on passenger side.

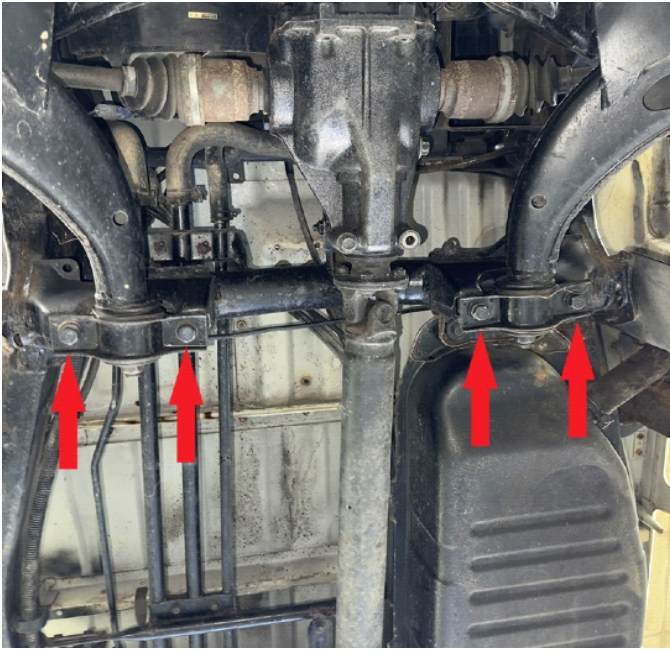


Step 10. Carefully lower subframe approximately 1 inch.

Step 11. Place 1.25x1 M12 spacers between subframe and body, secure with 2 M12x45 bolts.



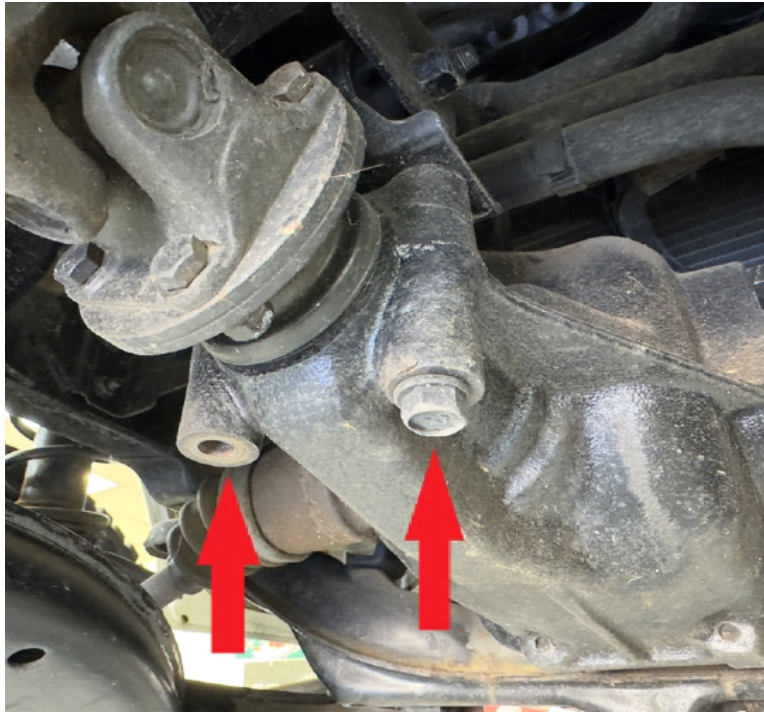
Step 12. Remove bolts holding front lower control arm to frame, and thread in 1 M12x45 bolt on each side.



Step 13. Place 1.25x1 M12 spacers between front lower control arm and frame and secure with M12x45 bolts as shown in photo:



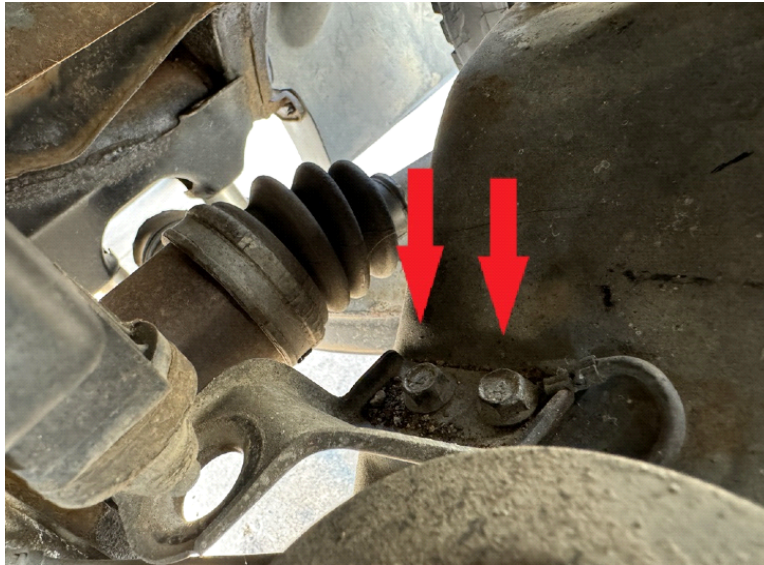
Step 14. Remove bolts holding front differential to crossmember.



Step 15. Place 2 1x1 M10 spacers between front differential and frame, secure with M10x110 bolts. (see photo)



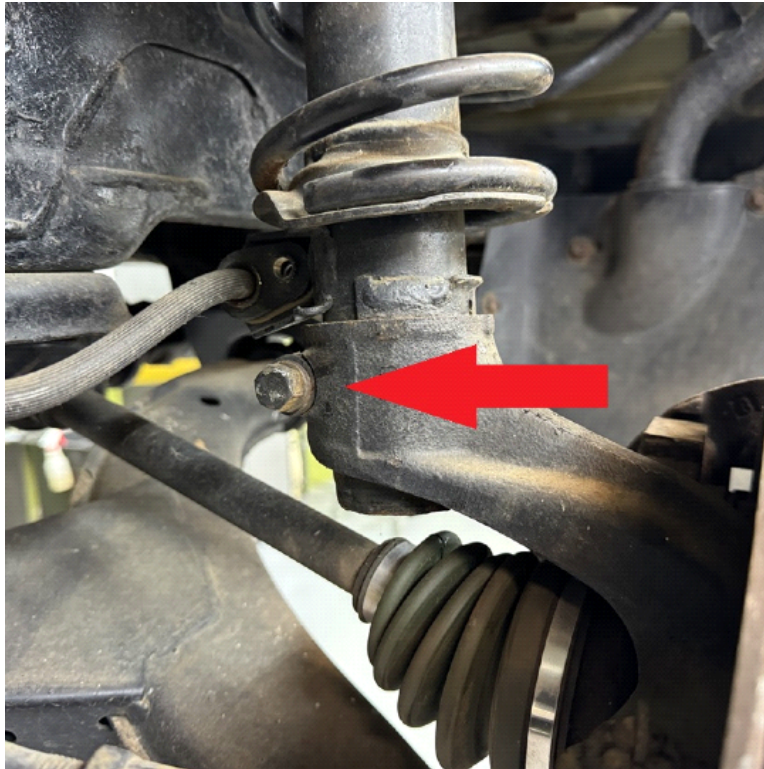
Step 16. Remove bolts holding radiator brackets to subframe.



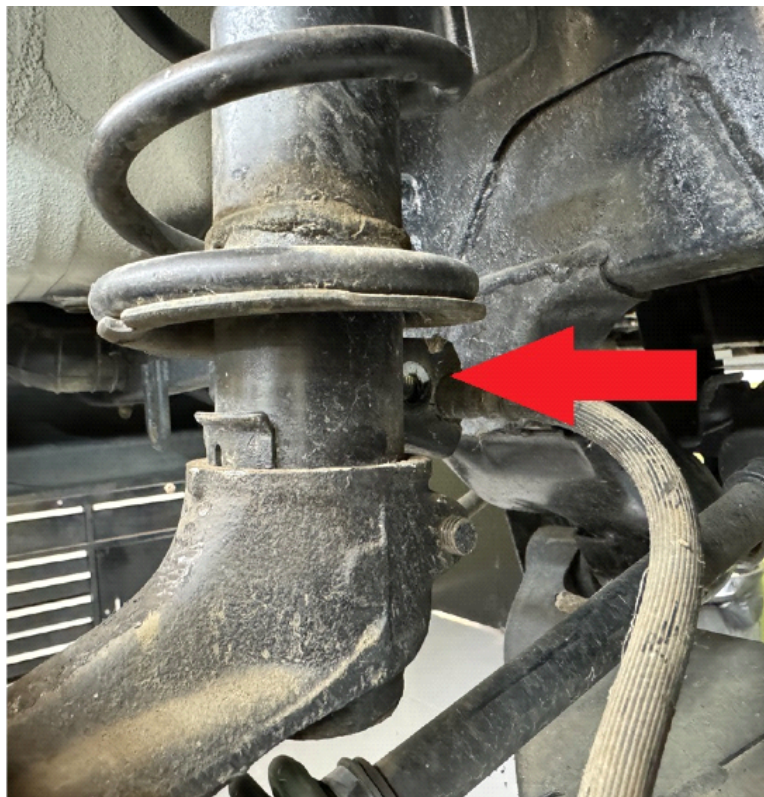
Step 17. Install 05.x1 M6 spacers and M6x40 bolts as shown. Be sure to reconnect ground wire!



Step 18. Remove 14mm pinch bolt holding passenger (LEFT) side knuckle to strut.



Step 19. Remove 12mm bolt holding brake hose to strut.



Step 20. Using a 30mm socket, remove axle nut.



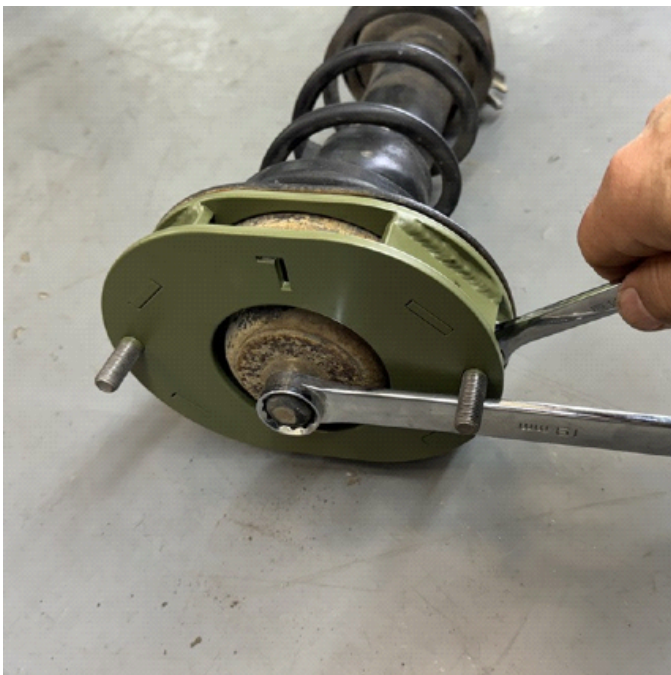
Step 21. Using a heavy hammer, tap on knuckle to slide off of strut.

Step 22. Push axle through hub to allow hub to move freely.

Step 23. Lift bottom of passenger seat and remove rubber plugs to allow access to strut mounting nuts.

Step 24. Remove 14mm nuts holding strut to shock tower and remove strut.

Step 25. Mount lift spacer to top of strut using hardware provided in the kit, with L facing you, as shown in photo.



Step 26. Mount spacer/strut assembly into vehicle using original hardware. The top of the strut will spin. Turn the top of the strut so that the L faces OUT. Installing the spacer backward will result in extreme positive camber.

Step 27. Slide strut back into knuckle, using a heavy hammer to tap it back into place.



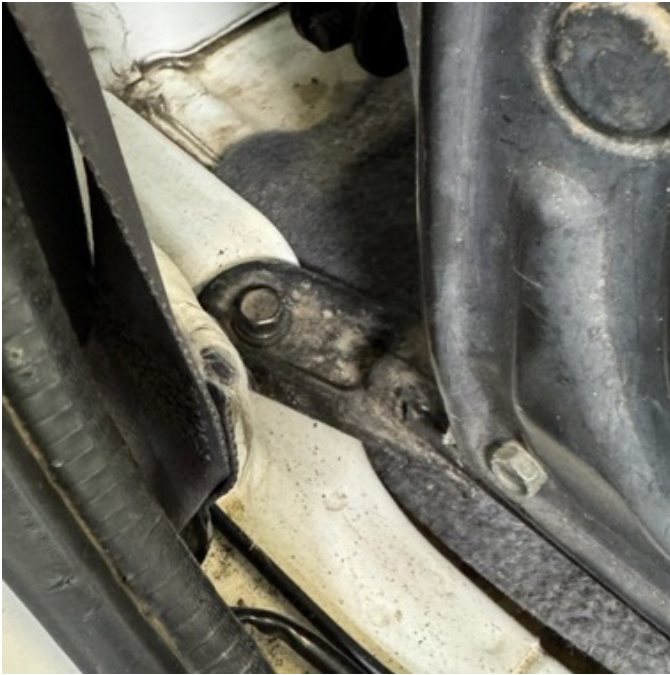
Step 28. Reinstall 14mm pinch bolt and 12mm bolt holding brake line to strut.

Step 29. Tighten axle nut to 175 ft-lb.

Step 30. Remove 2 bolts from the front of the driver side seat track.



Step 31. Slide seat all the way forward, and remove 2 rear bolts.



Step 32. Remove driver seat and repeat steps 18-31.

Step 33. Reinstall driver seat.

## Rear installation

**Parts needed: 2 rear spring spacers, 2 rear shock extensions, 2 M10x50 bolts, 2 M10 nuts**

Step 1. Support passenger rear arm with floor jack or screw jack.

Step 2. Remove nut holding shock absorber to wheel hub.



Step 3. Loosen bolt holding rear arm to frame.



Step 4. Remove bolt holding shock absorber to wheel hub.



Step 5. Lower jack to release pressure on the spring. Remove spring.

Step 6. Place rubber spring isolator inside of spacer as shown:



Step 7. Install spring and spacer as shown:



Step 8. Lift suspension arm with jack to compress spring.

Step 9. Install rear shock extension as shown:



Step 10. With rear suspension compressed, tighten bolt holding rear arm to frame.

Step 11. Repeat steps 1-10 for passenger side.

Step 12. Reinstall wheels and lower vehicle.

Step 13. Get a professional alignment.

Step 14. Find some trails!

**Note: Installing a lift kit will change the suspension geometry and will require a 4 wheel alignment, and possibly front/rear camber correction kits.**

**Warning: Failure to follow the procedures in these installation instructions may result in unsafe handling characteristics, damage to vehicle, or loss of control.**

**For tech support, please call 1-844- HRG LIFT (474-5438) from 8-4:30 PM EST Mon-Thu 8-3:30 PM Fri or email us 24/7 at [support@hrgoffroad.com](mailto:support@hrgoffroad.com).**

***This product is intended for off-road use only!!***

Copyright HRG Offroad. 2025