



## 2005-09 Legacy 1.5" lift kit installation guide

*Professional installation is recommended*

### **IMPORTANT!**

Lifting and modifying the suspension on your vehicle may result in drive line vibrations, damaged bushings, erratic handling characteristics, and shortened suspension component life. HRG Offroad recommends the following:

- Checking and/or replacing worn drive axles with new parts, not remanufactured.
- Checking and/or replacing all worn factory rubber bushings with urethane bushings, such as Prothane.
- Checking and/or replacing worn shock absorbers and bump stops.
- Performing a 4 wheel alignment after working on suspension components.

**Lift kits may not be legal for use on public highways in your area. Please check local laws before installing!**

### **WARNING!**

***Lifted vehicles are more prone to rolling over.***

Some HRG Offroad products are designed to improve off-road capabilities. Modifying the suspension of your vehicle may result in handling characteristics that are different from a factory equipped vehicle. Extreme care must be used to prevent a rollover or loss of control. Always operate your modified vehicle at a reduced speed to ensure your ability to maintain control under all driving conditions. Driving your vehicle in an unsafe manner may result in serious injury or death. HRG Offroad lift kits are designed and tested to work together. HRG Offroad does not recommend combining this lift kit with any other type of suspension or body lift. Always wear your seat belt.

Recommended tire/wheel sizes:

Stock 205/70/15 (26.3") or 215/60/16 (26.3")

15" wheels

205/75/15 (27.0")

225/70/15 (27.4")

215/75/15 (27.7")

225/75/15 (28.2")

16" wheels

215/70/16 (27.8")

225/70/16 (28.4")

***Be sure to check fitment prior to installation! These sizes are only suggestions. HRG is not responsible for improperly fitted wheels/tires!***

**Included in the kit:**

2 1.5" (38mm) lift spacers (front)

2 1.5" (38mm) lift spacers (rear)  
6 M8 nuts (front spacers)  
4 M10 nuts (rear spacers)  
6 1.25x1 M14 spacers (rear trailing arms)  
6 M14x50 bolts (rear trailing arms)  
2.75x1 M14 spacers (rear subframe)  
4 M14x180 bolts (rear subframe)  
2 extended rear sway bar links for lifted applications  
4 extended muffler hangers

**Tools required:**

Floor Jack, lug wrench, metric socket set to 22mm, metric wrench set to 19mm, heavy hammer, impact gun, power drill, 15/32 drill bit, torque wrench and paint pen.

**Skill Level: Moderate (drilling is required)**

**Tip: if your vehicle has significant rust, spray all suspension bolts and nuts with PB blaster or similar product prior to installation.**

**Front installation:**

Step 1. Lift vehicle and support with jack stands.

Step 2. Remove front wheels.

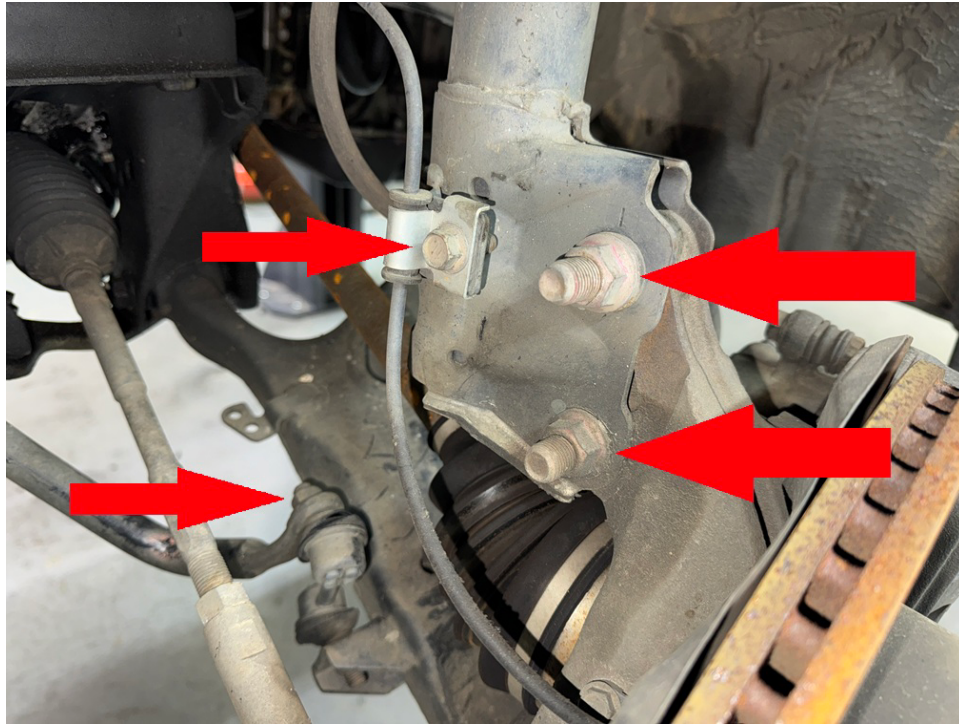
Step 3. Remove 12mm bolt holding brake line from driver side strut.



Step 4. Remove nut holding sway bar end link to sway bar. (See photo below)

Step 5. Remove 2 19mm nuts holding strut to knuckle. (See photo below)

Step 6. Remove 12mm bolt holding ABS wire to strut. (See photo below)

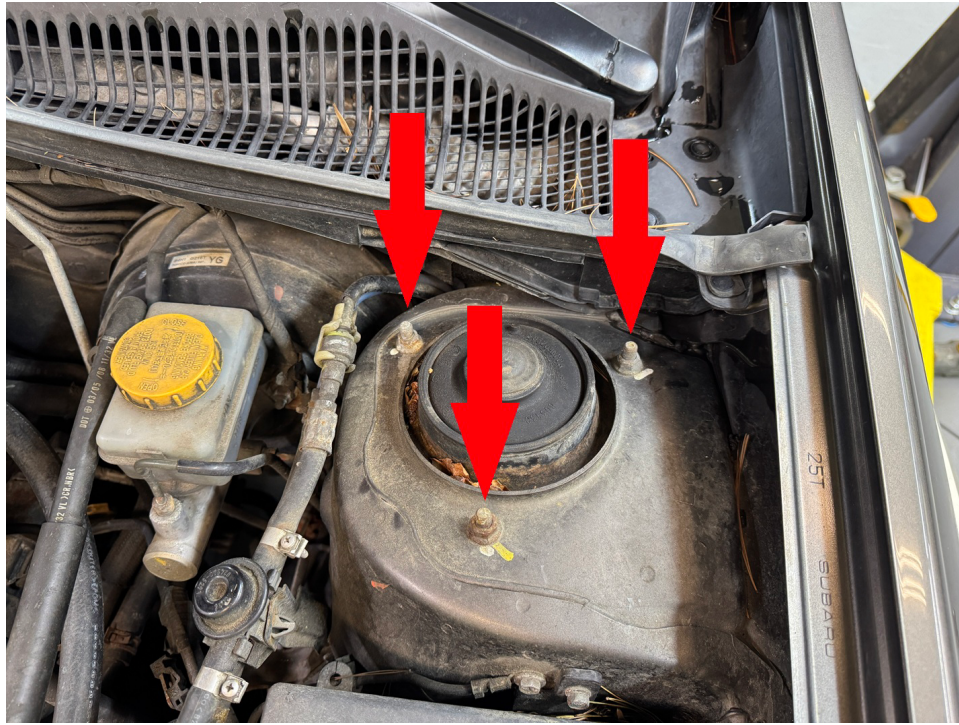


Step 7. Using a heavy hammer, tap strut bolts out.

Step 8. Using a ratchet strap or elastic cord, secure wheel hub to prevent inner axle joint from coming apart.



Step 9. Remove 3 12mm from strut top to allow strut to drop out. (Save hardware.)



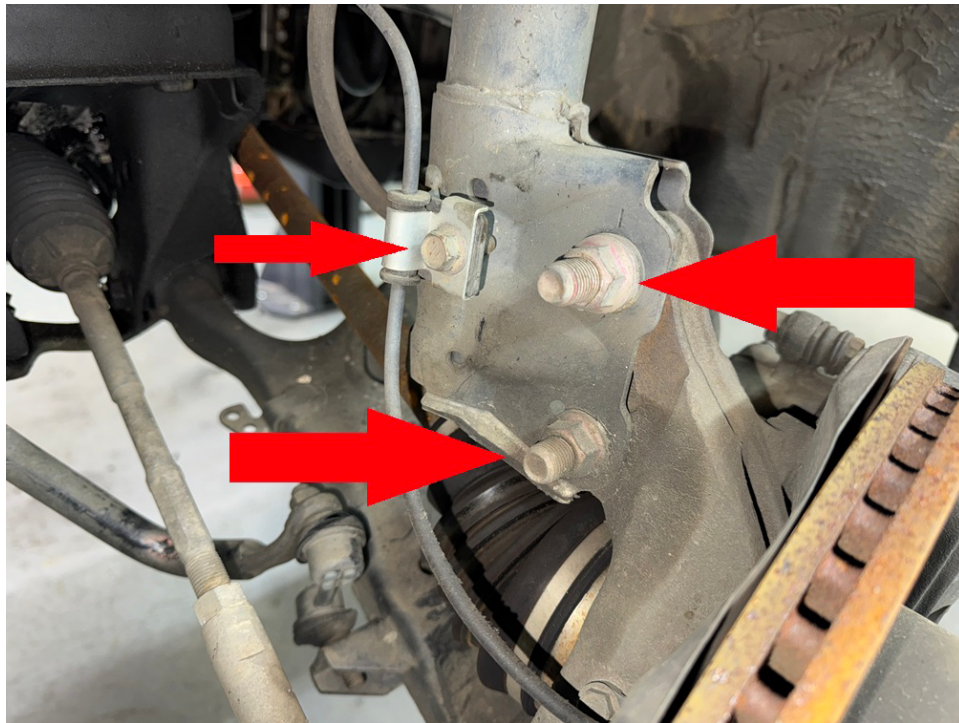
Step 10. Install spacer onto strut using M8 nuts provided in the kit.



Step 11. Lift strut back into place and bolt in using original hardware. Torque nuts to 25 ft-lb.



Step 12. Reinstall ABS wiring and brake line.



Step 13. Reinstall main strut bolts. Offset cam bolt goes in the top hole!

Step 14. Repeat lift spacer installation process for passenger side.

Step 15. Reinstall sway bar links after spacer installation is complete on both sides. Torque sway bar links to 35 ft-lb.



Step 16. Reinstall front wheels.

### **Rear Installation:**

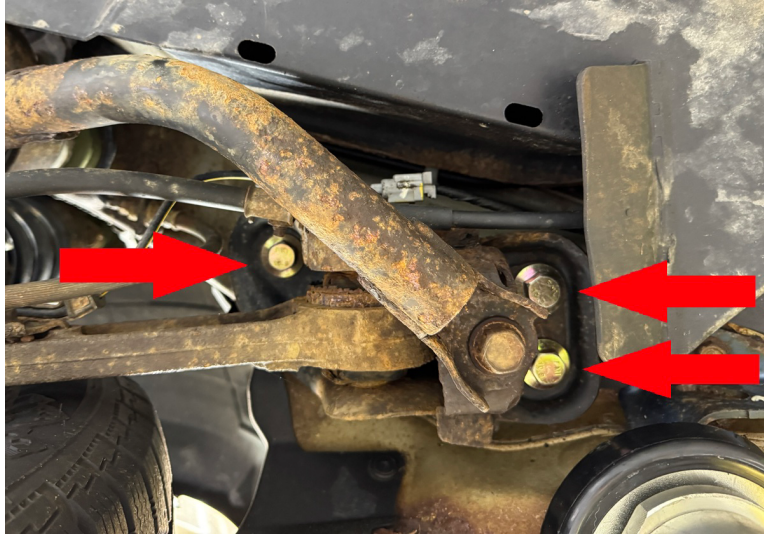
Step 1. Lift vehicle and support with jack stands.

Step 2. Remove rear wheels.

**Tip: if your vehicle has significant rust, spray all bolts and nuts with PB blaster or similar product.**

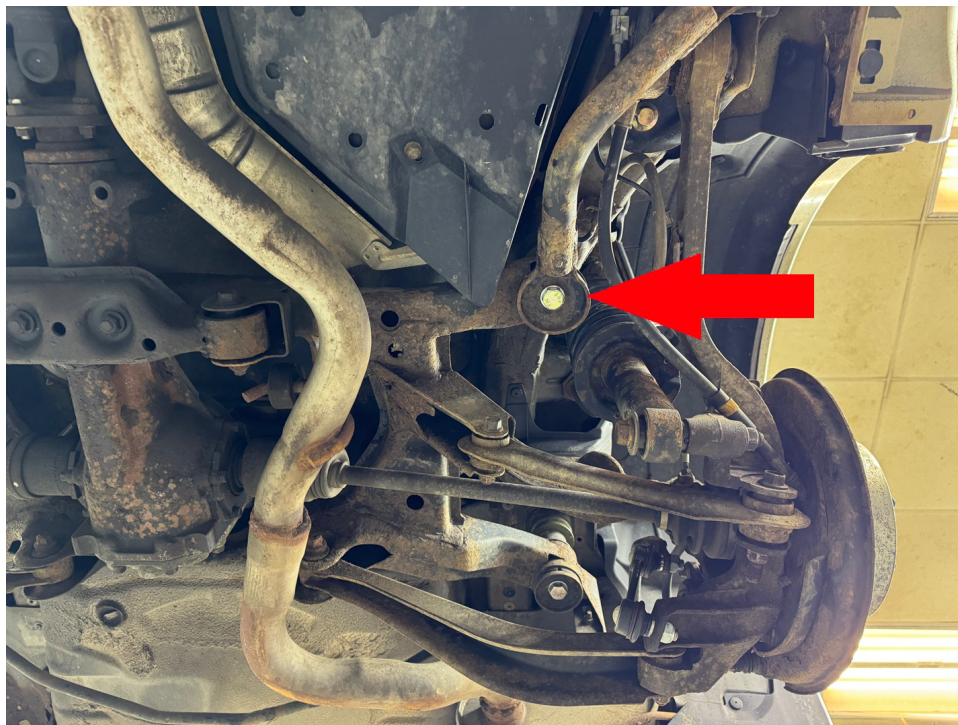
Step 3. Support rear subframe with screw jack or floor jack.

Step 4. Locate and remove driver side trailing arm mounting bolts.



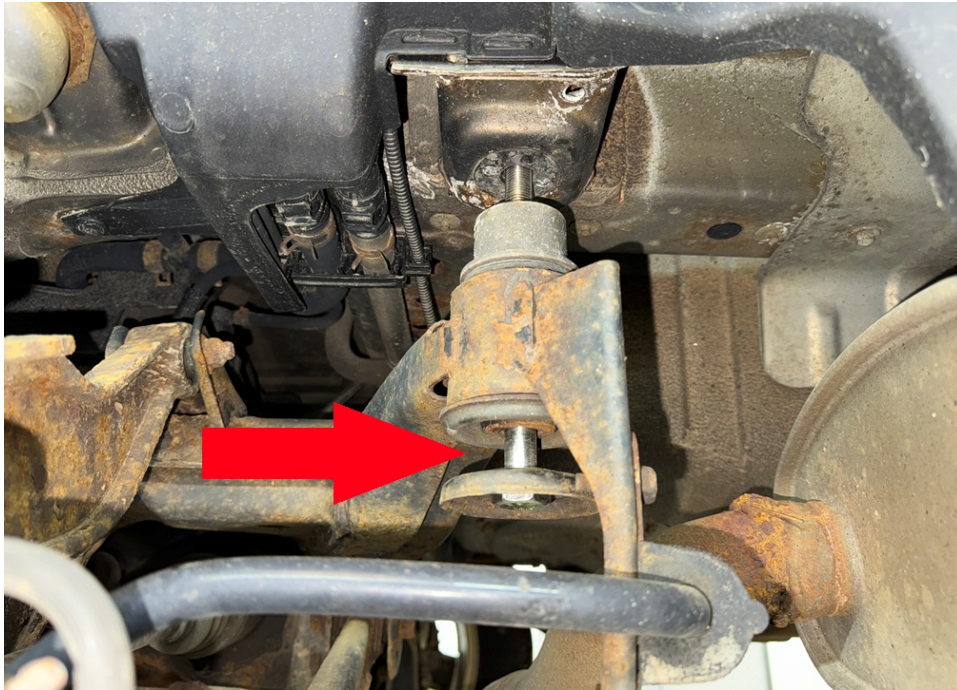
Step 5. Repeat process on passenger side.

Step 6. Locate and remove front most driver side subframe bolt. Temporarily thread in M14x180 bolt included in the kit.



Step 7. Repeat process for remaining 3 subframe bolts.

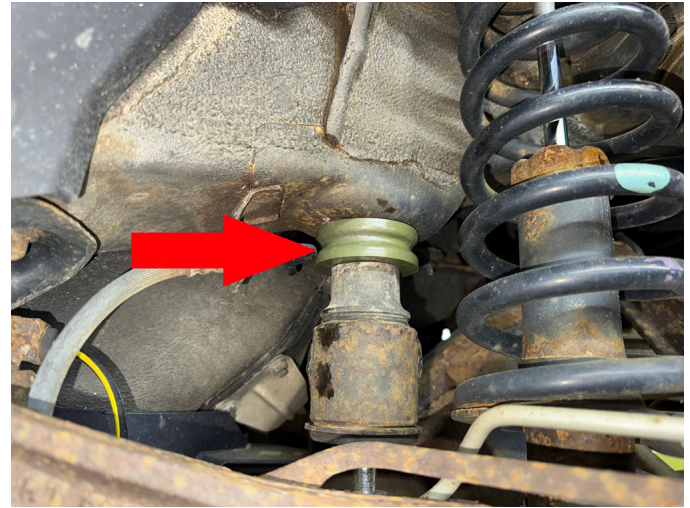
Step 8. Carefully lower the subframe approximately one inch.



Step 9. Place 2.75x1 M14 spacer between subframe and chassis. Permanently install M14x180 bolt. Torque bolts to 135 ft-lb.



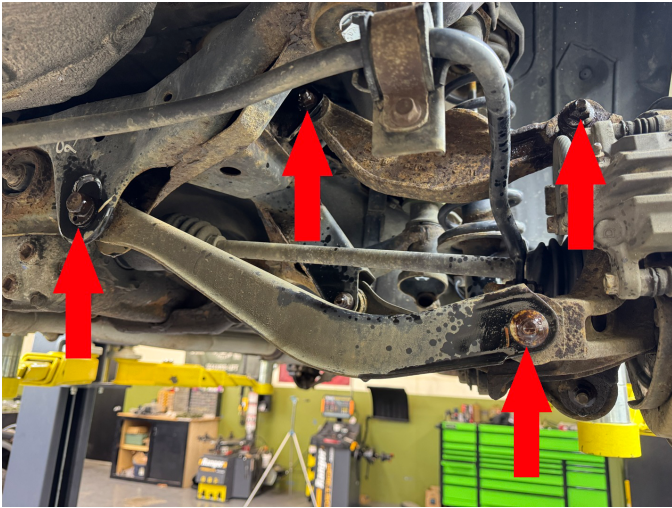
Step 10. Repeat process for remaining 3 subframe bolts/spacers.



Step 11. Place 3 1.25x1 M14 Spacers between driver side trailing arm mount and chassis. Install M14x50 bolts. Torque bolts to 90 ft-lb.



Step 12. Loosen all bolts on rear suspension to allow free movement.



Step 13. Remove both driver and passenger rear sway bar end links. These will not be reused.



Step 14. Remove bolt holding driver side rear strut to lower control arm.



Step 15. Remove cargo cover to gain access to driver side rear strut mounting bolts.



Step 16. Remove 2 14mm nuts holding the rear strut in place. (Save hardware.)



Step 17. Mount the spacer to the strut using the M10 nuts provided in the kit.

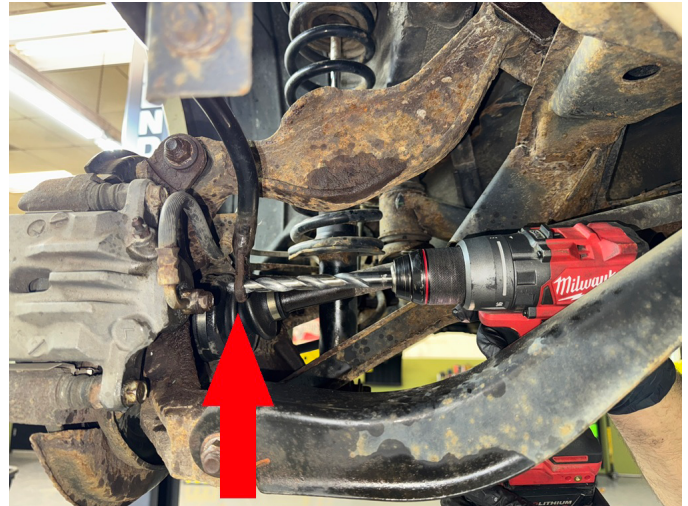
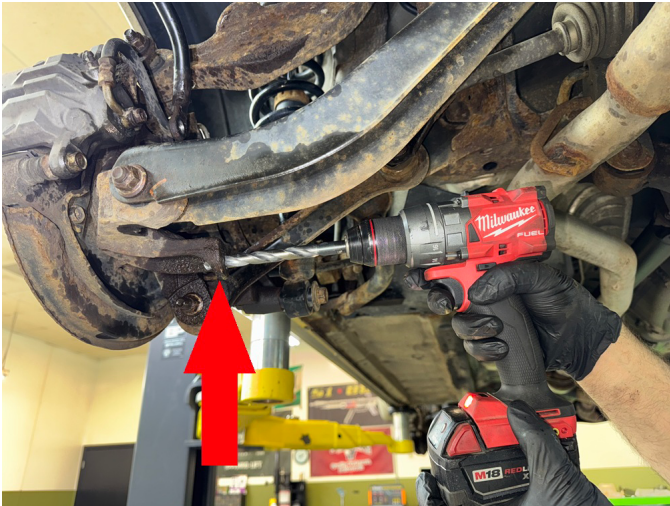


Step 18. Lift strut back into vehicle, lining up the 2 bolts through the strut tower and loosely install the 2 OEM 14mm nuts. (leaving these loose will make aligning the lower mounting bolt easier)



Step 19. Reinstall lower strut mounting bolt.

Step 20. Drill out sway bar and sway bar link mounting holes using 15/32" drill bit

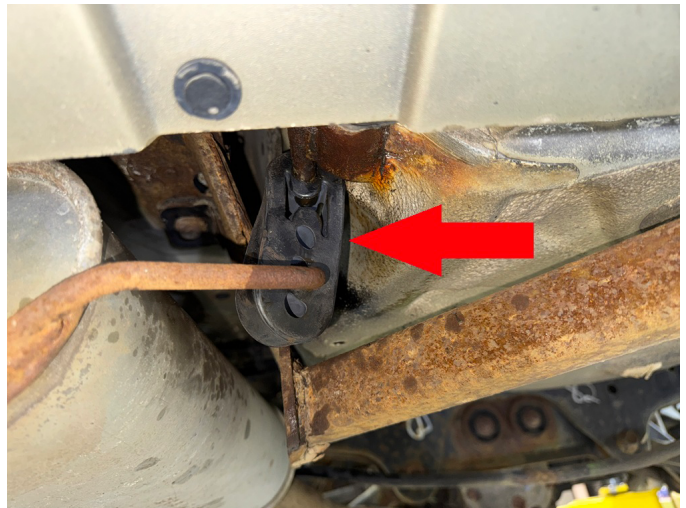


Step 21. Install new sway bar link. Torque nuts to 35 ft-lb



Step 22. Repeat lift spacer and sway bar link installation process on passenger side.

Step 23. Check clearance between rear sway bar and exhaust. If necessary, install extended exhaust hangers in place of OEM hangers as shown:



Step 24. Reinstall rear wheels.

Step 25. Get a professional alignment.

Step 26. Find some trails!

**Note: Installing lift spacers will change the suspension geometry and will require a 4 wheel alignment.**

**Warning: Failure to follow the procedures in these installation instructions may result in unsafe handling characteristics, damage to vehicle, or loss of control.**

**For tech support, please call 1-844- HRG LIFT (474-5438) from 8-4:30 PM EST Mon-Thu 8-3:30 PM Fri or email us 24/7 at [support@hrgoffroad.com](mailto:support@hrgoffroad.com).**

*This product is intended for off-road use only!!*

Copyright HRG Offroad 2026