



## 2014-2018 1.5" lift kit installation guide

*Professional installation is recommended*

### **IMPORTANT!**

Lifting and modifying the suspension on your vehicle may result in drive line vibrations, damaged bushings, erratic handling characteristics, and shortened suspension component life. HRG Offroad recommends the following:

- Checking and/or replacing worn drive axles with new parts, not remanufactured.
- Checking and/or replacing all worn factory rubber bushings with urethane bushings, such as Prothane.
- Checking and/or replacing worn shock absorbers and bump stops.
- Performing a 4 wheel alignment after working on suspension components.

**Lift kits may not be legal for use on public highways in your area. Please check local laws before installing!!**

### **WARNING!**

***Lifted vehicles are more prone to rolling over.***

Some HRG Offroad products are designed to improve off-road capabilities. Modifying the suspension of your vehicle may result in handling characteristics that are different from a factory equipped vehicle. Extreme care must be used to prevent a rollover or loss of control. Always operate your modified vehicle at a reduced speed to ensure your ability to maintain control under all driving conditions. Driving your vehicle in an unsafe manner may result in serious injury or death. HRG Offroad lift kits are designed and tested to work together. HRG Offroad does not recommend combining this lift kit with any other type of suspension or body lift. Always wear your seat belt.

### **Included in the kit:**

- 2 1.5" (38mm) offset lift spacers (front) 5659
- 2 1.5" (38mm) lift spacers (rear) 5663
- 6 M8 nuts (front)
- 4 M10 nuts (rear)
- 2 14mm 1.5° camber adjustment bolts (optional)

### **Tools required:**

Floor Jack, lug wrench, metric socket set up to 21mm, metric wrench set up to 18mm, common pliers, torque wrench, paint pen.

***Approximate installation time: 4 hours***

### **Front installation:**

**TIP: installation is made easier by disassembling suspension on both sides before installing spacers. Disconnecting the sway bars during the installation may be necessary.**

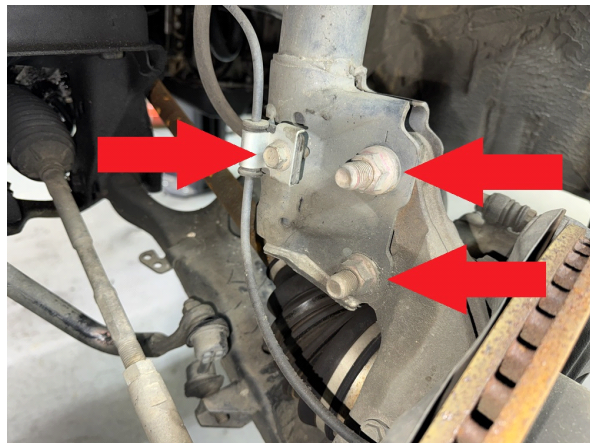
Step 1. Lift vehicle and support with jack stands.

Step 2. Remove wheels.

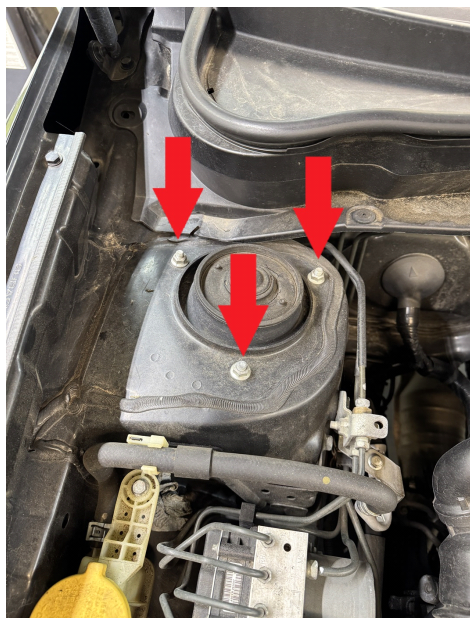
Step 3. Remove bolts holding the brake line and ABS wiring to the driver side strut.



Step 4. Remove 2 main bolts in bottom of strut. (save 1 bolt, the other will be replaced by camber bolt provided in the kit).



Step 5. Remove 3 M8 nuts from strut top to allow strut to drop out. Remove strut. (save hardware).

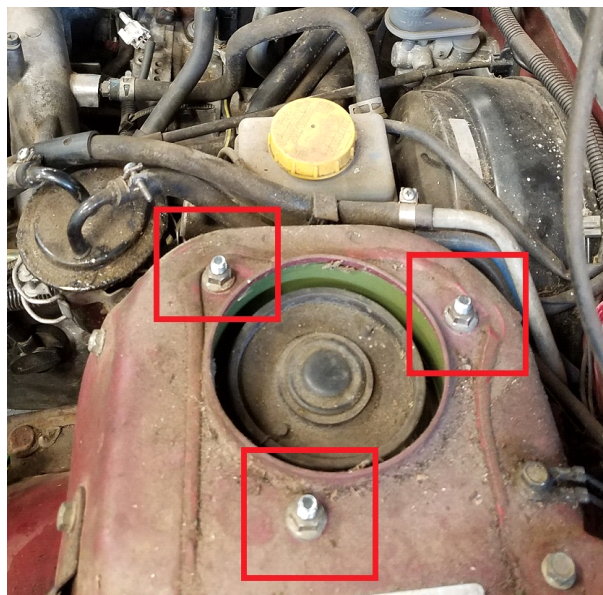


Step 6. Repeat installation process for passenger side. Disassembling both sides will allow the suspension to drop down without removing the sway bar links.

Step 7. Mount driver side spacer to strut using M8 nuts provided in the kit.



Step 8. Slide strut back into place and mount to vehicle using original hardware saved from step 5. Torque nuts to 30 ft-lb.



Step 9. Bolt ABS and brake lines back to strut.

Step 10. Using a floor jack, lift the lower arm and brake assembly until the main strut bolts line up.

Step 11. Reinstall lower main strut bolt in bottom hole, install camber bolt in TOP HOLE.

Step 12. Torque bolts to 95 ft-lb

Step 13. Repeat installation process for passenger side.

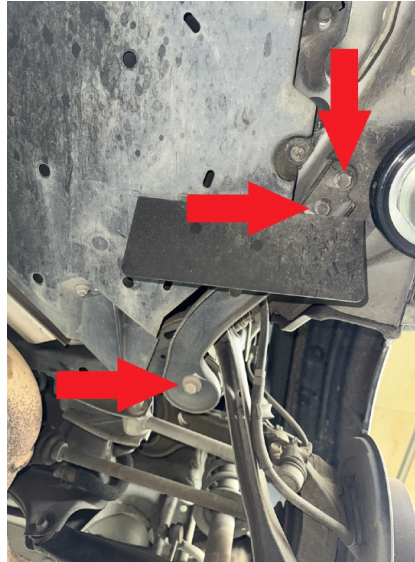
Step 14. Reinstall wheels.

## Rear Installation:

Step 1. Lift vehicle and support with jack stands.

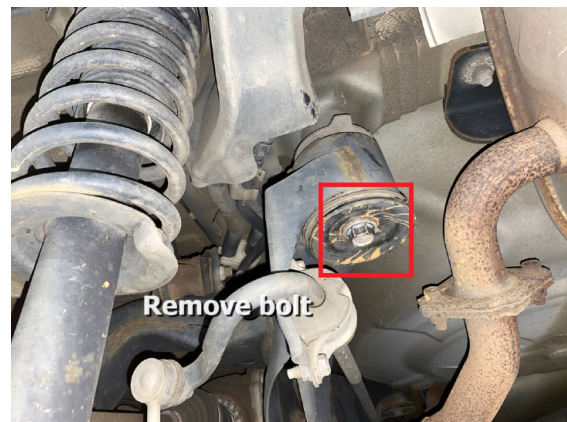
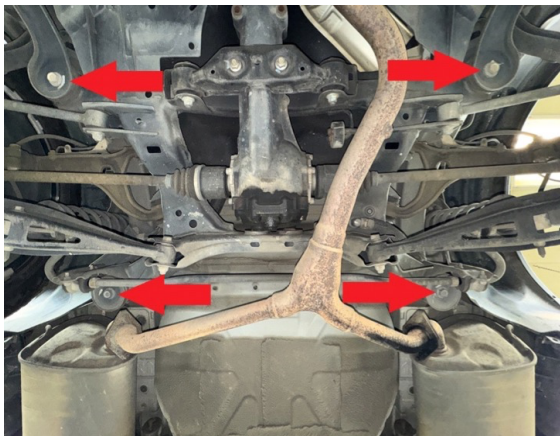
Step 2. Remove wheels.

Step 3. Remove 2 14mm bolts holding driver side subframe stiffener bracket to body (see photo)



Step 4. Repeat step 3 for passenger side

Step 5. Loosen all 4 but remove ONLY 2 main subframe bolts, allowing the rear subframe to drop down just over an inch.



Step 6. Place 2 subframe spacer "pucks" between subframe and body, install 2 M14x180 bolts.



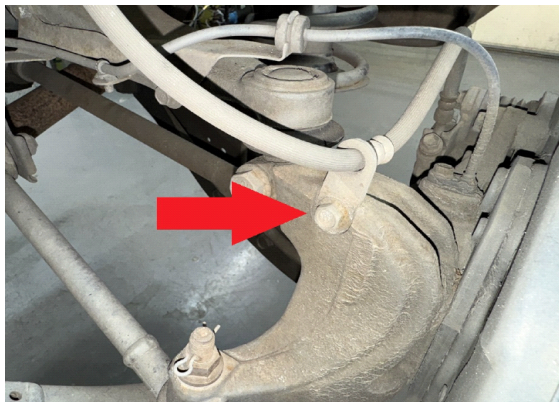
Step 7. Remove remaining 2 main subframe bolts, install pucks, install remaining 2 M14x180 bolts.

Step 8. Install 2 1x1 M10 spacers and M10x50 bolts between stiffener bracket and body. (see photo below) (repeat for opposite side)

Step 9. Install 1 0.75x1 M8 spacers and M8x40 bolts between parking brake cable and body (see photo) (repeat for opposite side)



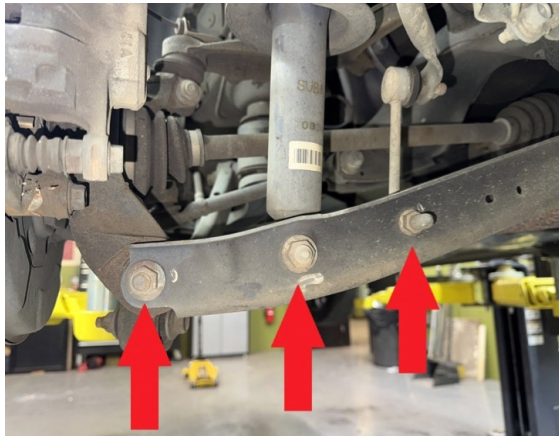
Step 10. Remove brake line from hub to prevent tension on the hose while lowering wheel hub.



Step 11. Install rear brake line extension bracket in factory brake line mounting location. Mount brake line as shown:



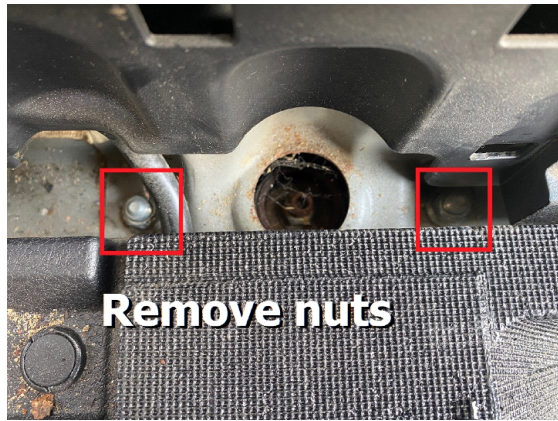
Step 12. Remove bolts holding sway bar link, rear strut, and wheel hub to driver side lower control arm. (see photo)



Step 13. Remove plastic panels to gain access to rear strut bolts.



Step 14. Remove 2 nuts holding rear strut to vehicle. Remove strut. (Save hardware)



Step 15. Mount the spacer to the strut using the nuts provided in the kit.



Step 16. Lift strut back into vehicle and install the strut assembly using the OEM nuts.

Step 17. Using a floor jack, lift the lower control arm until the rear strut lines up in the mounting hole, install mounting bolt.

Step 18. Lift the lower control arm until the rear wheel hub bolt holes line up with the holes on the lower control arm. Install mounting bolt.



Step 19. Repeat installation process for passenger side.

Step 20. Reconnect driver and passenger side rear sway bar links.

Step 21. Referring to factory service manual, torque all bolts to spec.

Step 22. Reinstall wheels.

Step 23. Get a professional alignment.

Step 24. Find some trails!

**Note: Installing lift spacers will change the suspension geometry and will require a 4 wheel alignment.**

**Warning: Failure to follow the procedures in these installation instructions may result in unsafe handling characteristics, damage to vehicle, or loss of control.**

**For tech support, please call 1-844- HRG LIFT (474-5438) from 8-4:30 PM EST Mon-Thu 8-3:30 PM Fri or email us 24/7 at [support@hrgoffroad.com](mailto:support@hrgoffroad.com).**

***This product is intended for off-road use only!!***

Copyright HRG Offroad 2025