



CX-30

2020-2025 Mazda CX-30 1.5" lift kit installation guide

Professional installation is recommended

FOR OFF-ROAD USE ONLY!

IMPORTANT!

Lifting and modifying the suspension on your vehicle may result in drive line vibrations, damaged bushings, erratic handling characteristics, and shortened suspension component life. HRG Offroad recommends the following:

- Checking and/or replacing worn drive axles with new parts, not remanufactured.
- Checking and/or replacing worn shock absorbers and bump stops.
- Performing a 4 wheel alignment after working on suspension components.

Lift kits may not be legal for use on public highways in your area. Please check local laws before installing!!

WARNING!

Lifted vehicles are more prone to rolling over.

Some HRG Offroad products are designed to improve off-road capabilities. Modifying the suspension of your vehicle may result in handling characteristics that are different from a factory equipped vehicle. Extreme care must be used to prevent a rollover or loss of control. Always operate your modified vehicle at a reduced speed to ensure your ability to maintain control under all driving conditions. Driving your vehicle in an unsafe manner may result in serious injury or death. HRG Offroad lift kits are designed and tested to work together. HRG Offroad does not recommend combining this lift kit with any other type of suspension or body lift. Always wear your seat belt.

Recommended tire/wheel sizes:

Stock size: 225/65/17 or 225/55/19

+1" larger tire

For 17" wheel: 245/65/17*

For 19" wheel: 245/55/19*

****Be sure to check fitment prior to installation! These sizes are only suggestions. HRG is not responsible for improperly fitted wheels/tires***

Included in the kit:

- 2 1.5" front strut spacers
- 2 1" rear spring spacers
- 2 sway bar link brackets
- 2 rear shock spacers
- 6 M10 nuts

Installation time: Approximately 3-4 hours

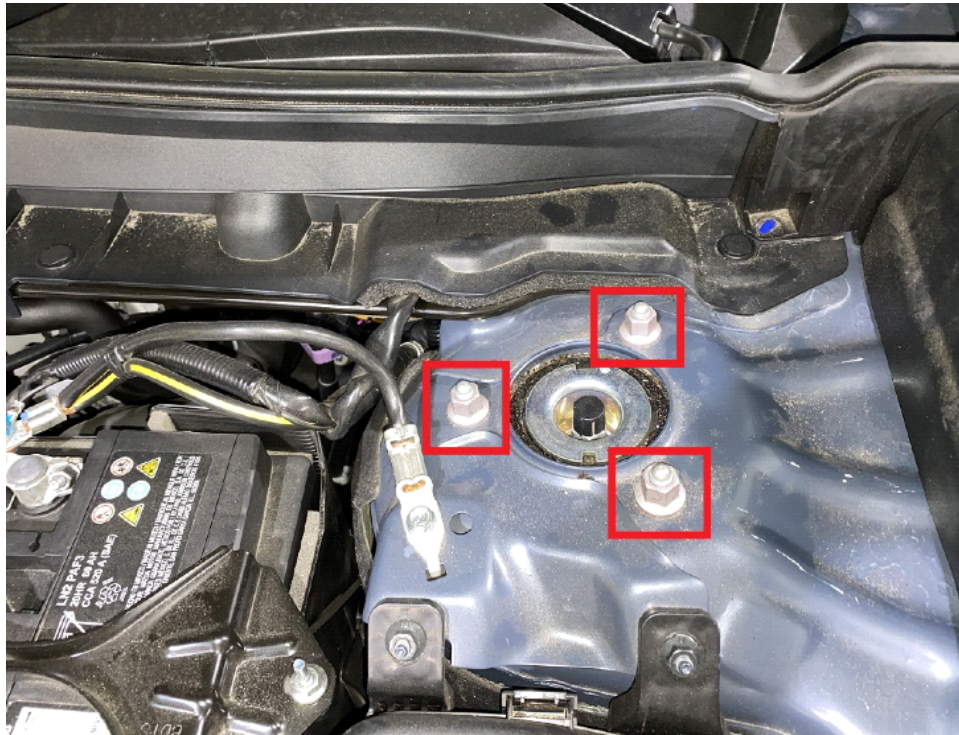
FRONT INSTALLATION:

Step 1. Jack up vehicle and support with jack stands.

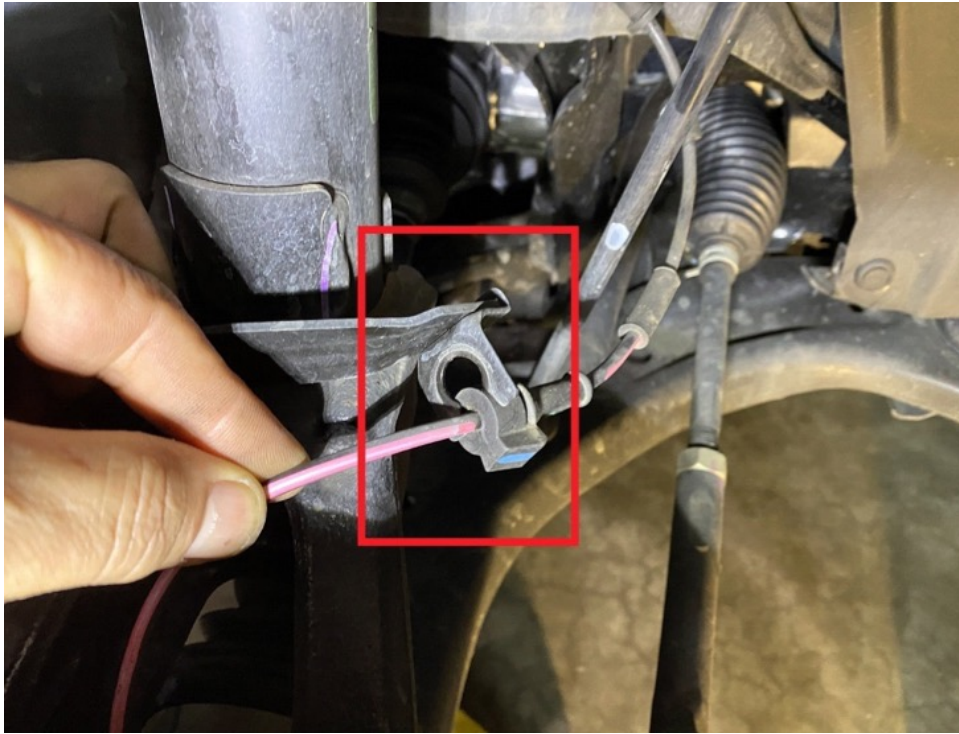
Step 2. Remove wheels.

TIP: Installation is made easier by either disconnecting both front sway bar links or disassembling both left and right side suspension at the same time.

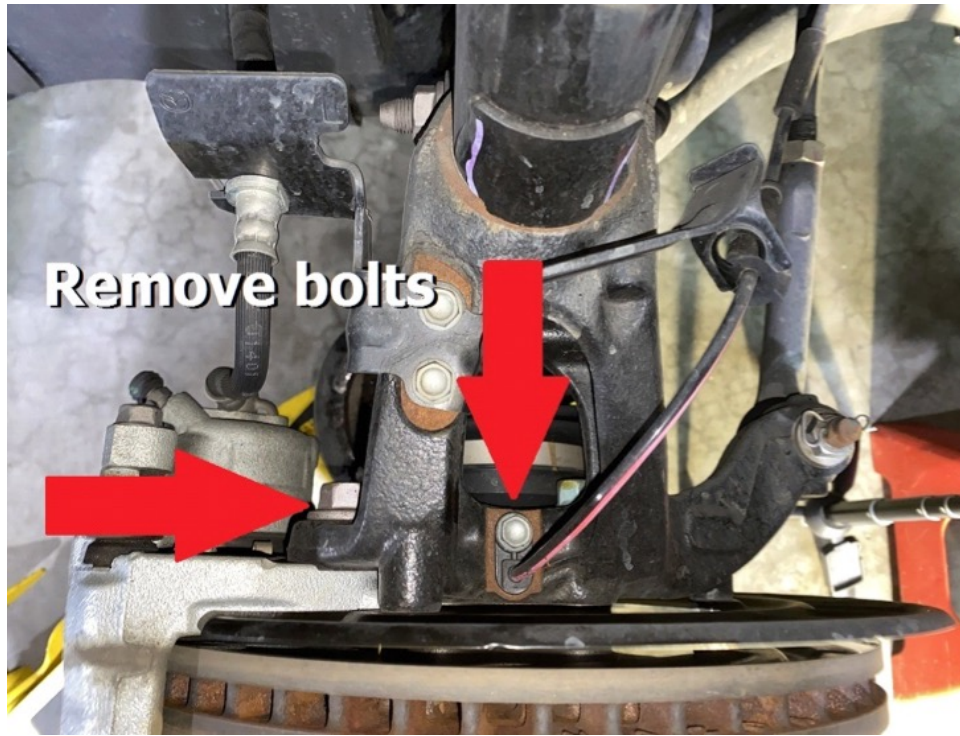
Step 3. Remove nuts from upper strut mount on driver side.



Step 4. Unclip brake hose and ABS wire from strut.



Step 5. Remove bolts holding ABS wire to knuckle, and brake caliper bracket to knuckle.

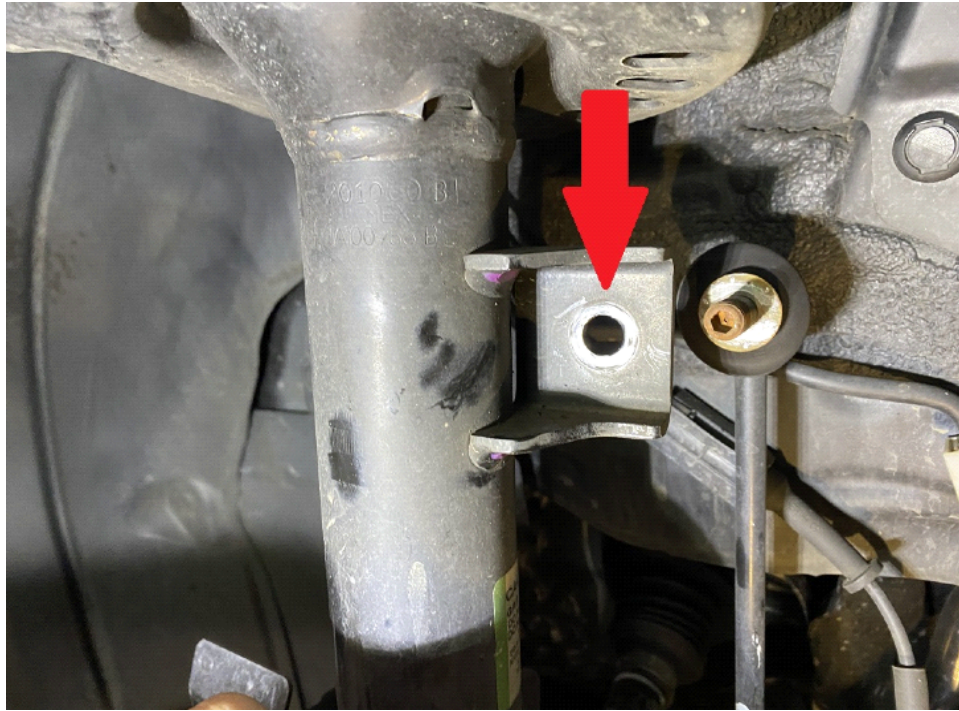


Step 6. Remove brake rotor and secure with string or wire, to prevent damaging brake hose.

Step 7. Remove cotter pin and nut holding tie rod to wheel hub.

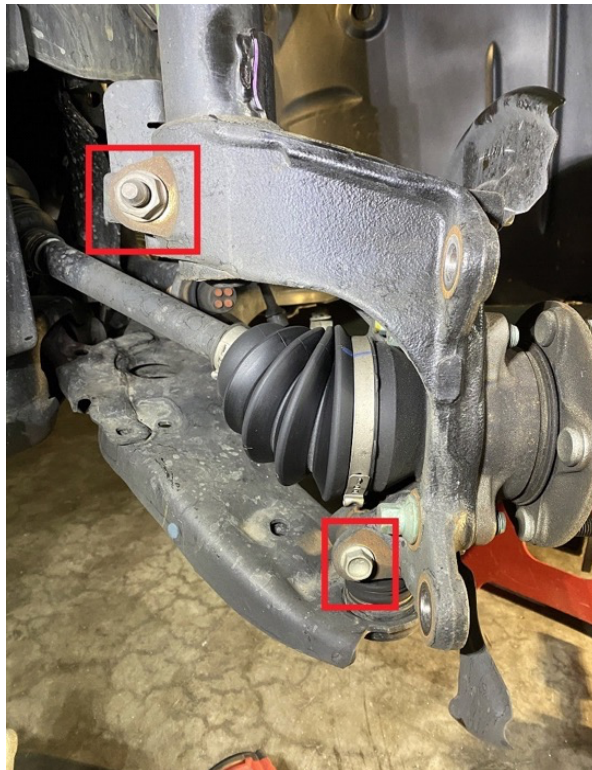


Step 8. Remove 17mm nut holding sway bar link to strut.



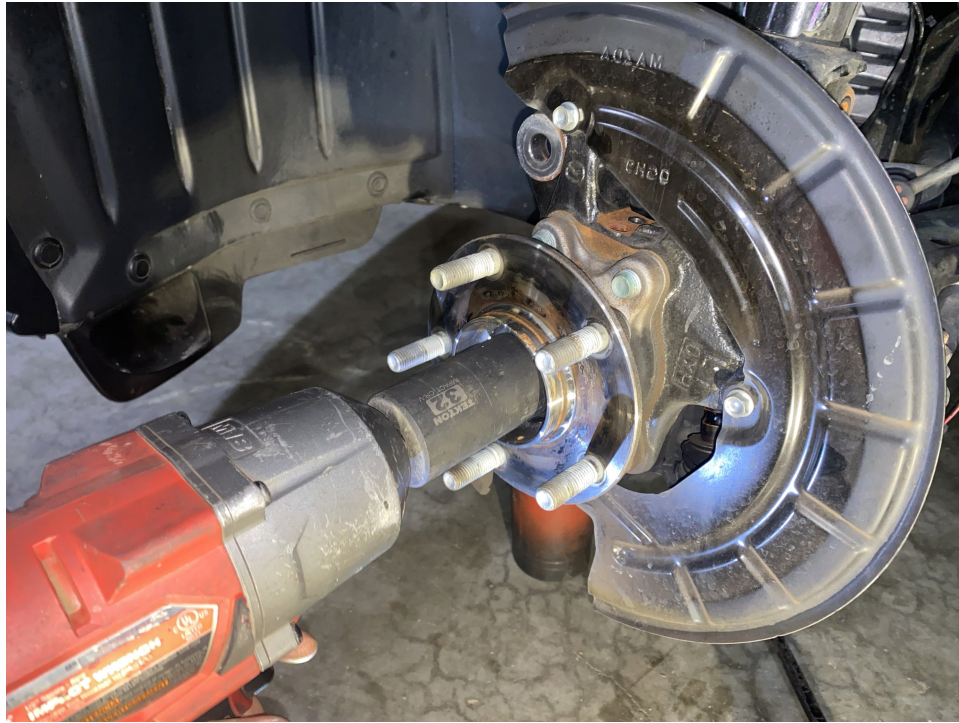
Step 9. Repeat step 8 on passenger side.

Step 10. Remove bolt holding strut to steering knuckle.



Step 11. Remove bolt holding steering knuckle to lower ball joint.

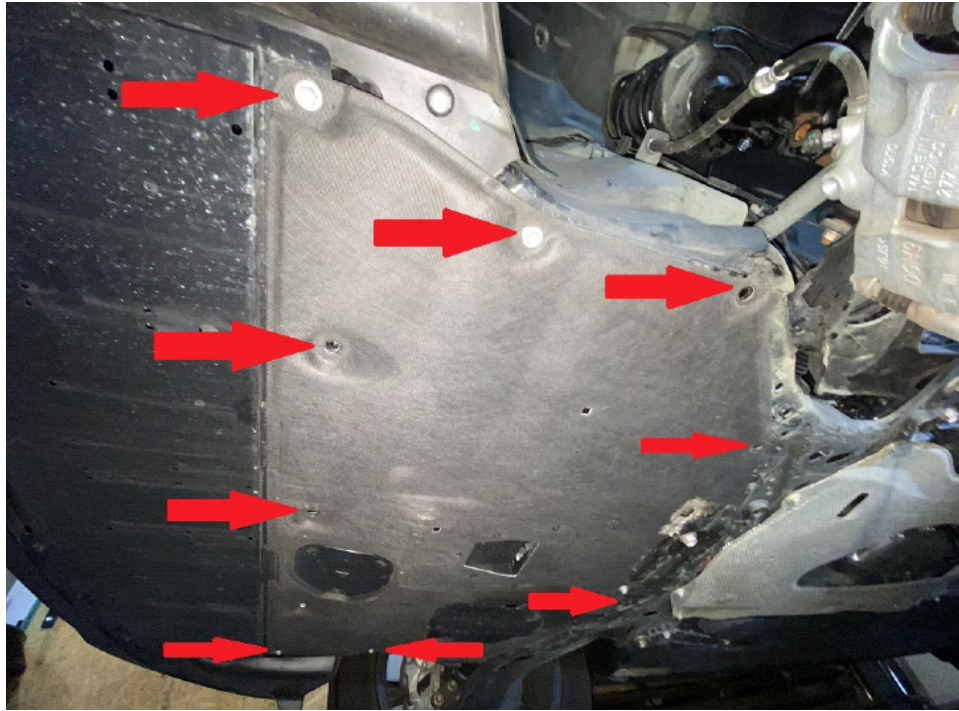
Step 12. Remove axle nut, slide axle out of knuckle and remove strut, hub and brake rotor.



Step 13. Place strut spacer on top of strut and secure with hardware provided in the kit.



Step 14. Remove fabric splash guard behind front bumper.



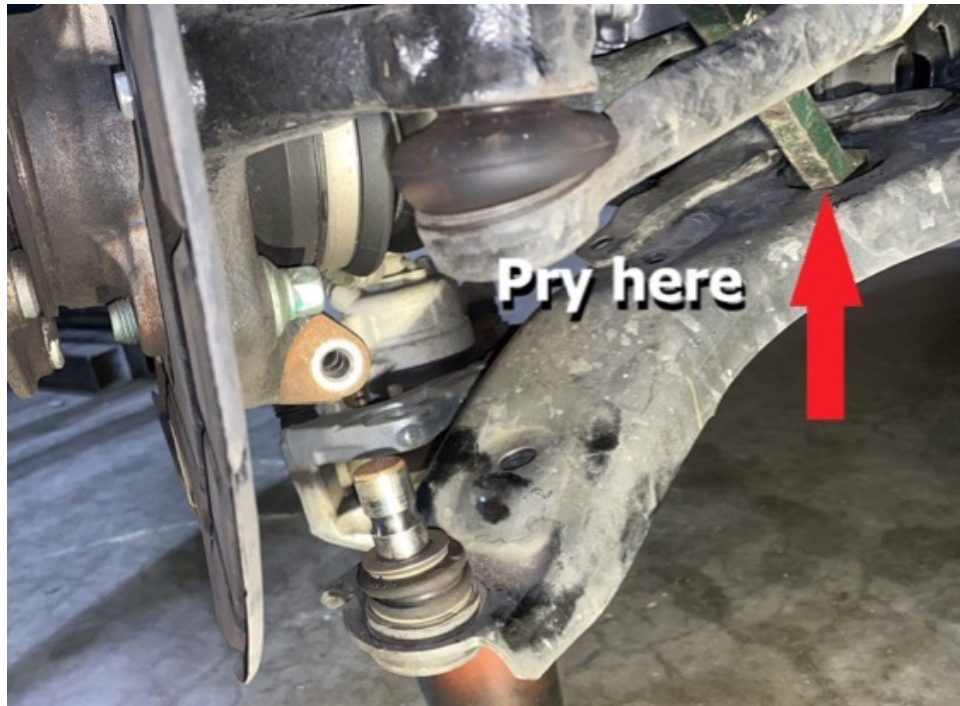
Step 15. Remove front lower control arm bolt.



Step 16. Reinstall strut/lift spacer assembly into shock tower, secure with OEM hardware.

Step 17. Slide strut back into knuckle, reinstall axle, brake rotor, brake caliper and tie rod end.

Step 18. Using a pry bar, pull the lower control arm down so that the lower ball joint goes back into knuckle. Reinstall lower ball joint retaining bolt.



Step 19. Reinstall front lower control arm bolt.



Step 20. Install sway bar link relocation bracket as shown in photo. Brackets are marked "L" for driver side and "R" for passenger side. Driver side shown (see photos)

NOTE: These brackets are left and right, and are interference fit. *The holes will not line up exactly, this is intentional and once tightened, the brackets will clamp onto the mounting tab.*



5



5



Step 21. Leave sway bar link loose until both sides are complete.

Step 22. Reinstall ABS wiring and flexible brake lines.

Step 23. Repeat steps 3-22 for passenger side.

Step 24. Reinstall sway bar end links.

Step 25. Reinstall fabric splash shield behind bumper.

Step 26. Double check all bolts. Refer to torque specs.

Step 27. Reinstall wheels.

REAR INSTALLATION:

Step 1. Jack up vehicle and support with jack stands.

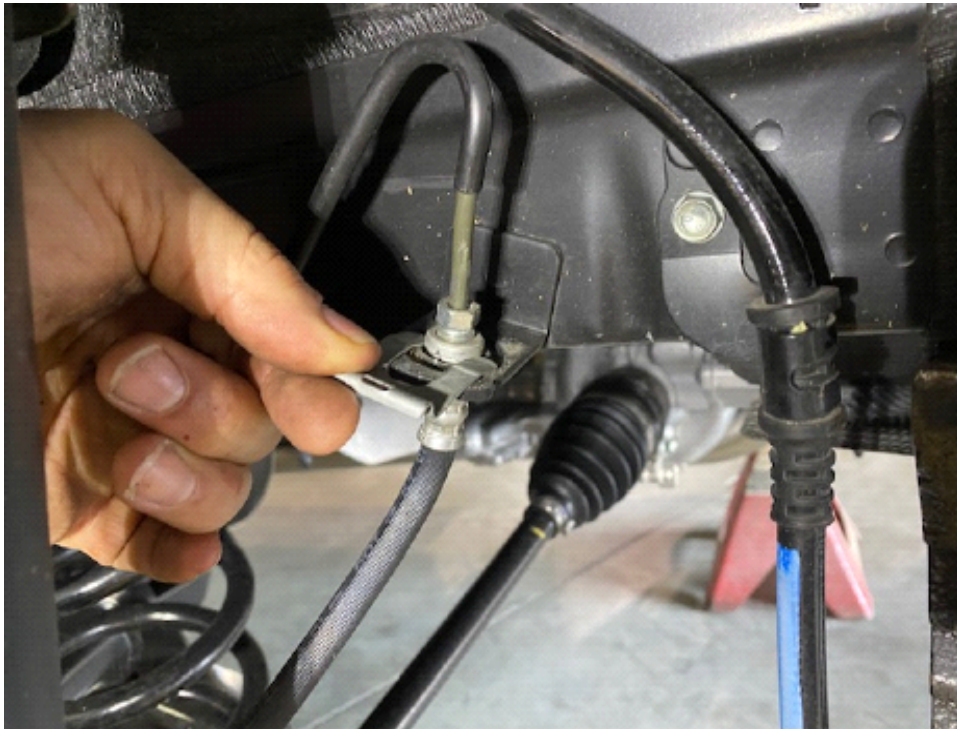
Step 2. Remove wheels.

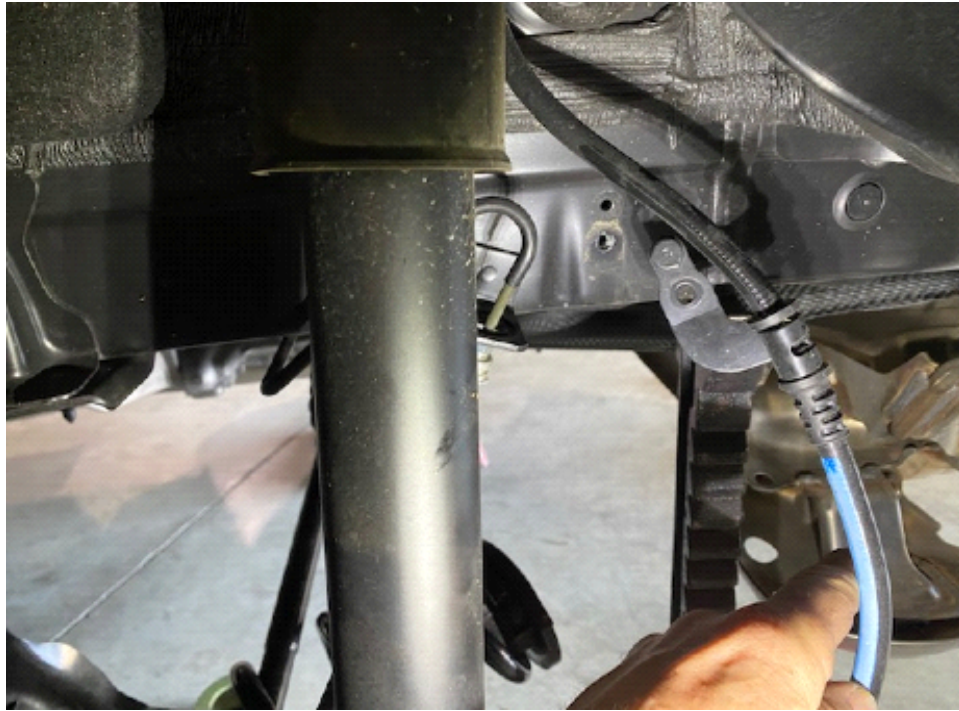
Step 3. Support rear axle with floor jack.



Step 4. Remove bolts holding rear shocks to rear axle.

Step 5. Unclip rear brake line and unbolt ABS wire.





Step 6. Release pressure on springs by lowering rear axle with floor jack. It may be necessary to loosen the bolts on the swingarm to allow the axle beam to fully drop.



Step 7. Remove spring and rubber isolator.



Step 8. Place lift spacer between frame rail and isolator, reinstall spring. **Note: Pay attention to the "clocking" of the springs. Be sure they fit into the slot on the lower spring isolator as precisely as possible.**



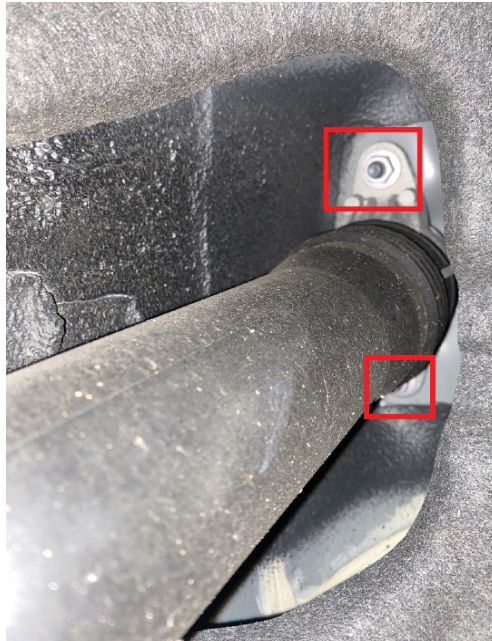
Step 9. Use floor jack to compress the springs and raise the rear axle back into place.



Step 10. Tighten bolts holding swingarms to body



Step 11. Remove nuts holding shock absorber to body.



Step 12. Bolt shock spacer to body using original hardware



Step 13. Attach shock spacer to shock absorber using hardware provided in the kit.

Step 14. Reinstall bolts holding shock absorbers to rear axle

Step 15. Repeat steps 3-14 for passenger side.

Step 16. Reconnect sway bar end links.

Step 17. Double check all bolts.

Step 18. Reinstall wheels.

Step 19. Get a professional 4 wheel alignment.

Torque specs:

Wheel lug nuts: 100 ft-lbs

Strut mounting nuts: 30 ft-lbs

Axle nut: 150 ft-lb

Front brake caliper mounting bracket: 45 ft-lb

Front strut lower mounting bolt: 60 ft-lb

Front/rear sway bar end links: 37 ft-lb

Front lower ball joint bolt: 50 ft-lb

Outer tie rod end: 35 ft-lb

Rear shock absorber upper mounting nuts: 30 ft-lb

Rear shock absorber lower mounting bolt: 50 ft-lb

Rear swingarm mounting nuts: 85 ft-lb



Note: Installing a lift kit will change the suspension geometry and will require a 4 wheel alignment.

Warning: Failure to follow the procedures in these installation instructions may result in unsafe handling characteristics, damage to vehicle, or loss of control.

For tech support, please call 1-844- HRG LIFT (474-5438) from 8-4:30 PM EST Mon-Thu 8-3:30 PM Fri or email us 24/7 at support@hrgoffroad.com.

This product is intended for off-road use only!!

Copyright HRG Offroad 2026