



## MAVERICK

### 2022+ Ford Maverick 2WD/Hybrid lift kit installation guide

*Professional installation is recommended*

#### **IMPORTANT!**

Lifting and modifying the suspension on your vehicle may result in drive line vibrations, damaged bushings, erratic handling characteristics, and shortened suspension component life. HRG Offroad recommends the following:

- Checking and/or replacing worn drive axles with new parts, not remanufactured.
- Checking and/or replacing all worn factory rubber bushings with urethane bushings, such as Prothane.
- Checking and/or replacing worn shock absorbers and bump stops.
- Performing a 4 wheel alignment after working on suspension components.

**Lift kits may not be legal for use on public highways in your area. Please check local laws before installing!!**

#### **WARNING!**

***Lifted vehicles are more prone to rolling over.***

Some HRG Offroad products are designed to improve off-road capabilities. Modifying the suspension of your vehicle may result in handling characteristics that are different from a factory equipped vehicle. Extreme care must be used to prevent a rollover or loss of control. Always operate your modified vehicle at a reduced speed to ensure your ability to maintain control under all driving conditions. Driving your vehicle in an unsafe manner may result in serious injury or death. HRG Offroad lift kits are designed and tested to work together. HRG Offroad does not recommend combining this lift kit with any other type of suspension or body lift. Always wear your seat belt.

Recommended tire/wheel sizes:

245/60/18

245/65/17

245/70/16

***Be sure to check fitment prior to installation! These sizes are only suggestions. HRG is not responsible for improperly fitted wheels/tires.***

#### **Included in the kit:**

2 1.5" front lift spacers

2 1.0" rear lift spacers

- 2 M10 nuts (rear spacers)
- 6 M8x16 bolts (spacer mounting bolts)
- 2 0.75x0.5 M8 spacers (brake line spacers)
- 2 M6x25 bolts (brake line spacers)
- 2 M14 Front Camber adjustment bolts
- 2 replacement sway bar end links for lifted application

**Tools required:**

Floor Jack or lift, lug wrench, metric socket set to 21mm, metric wrench set to 21mm, T40 Torx bit, panel removal tool, common pliers, torque wrench.

**Approximate installation time 2-3 hours**

### Front installation:

- Step 1. Lift vehicle and support with jack stands.
- Step 2. Remove wheels.
- Step 3. Remove brake/ABS lines from driver side strut.
- Step 4. Using 18mm wrench and Torx T40 bit, remove sway bar link.



Step 5. Remove nuts connecting strut to knuckle. Strike bolts carefully with hammer to slide bolts out. Do not use an impact to spin the bolts out of the knuckle (they are splined).



***NOTE: Do not allow the hub to fall loose, as the axle may come out of the inner CV joint.***

Step 6. Support knuckle with floor jack or screw jack.



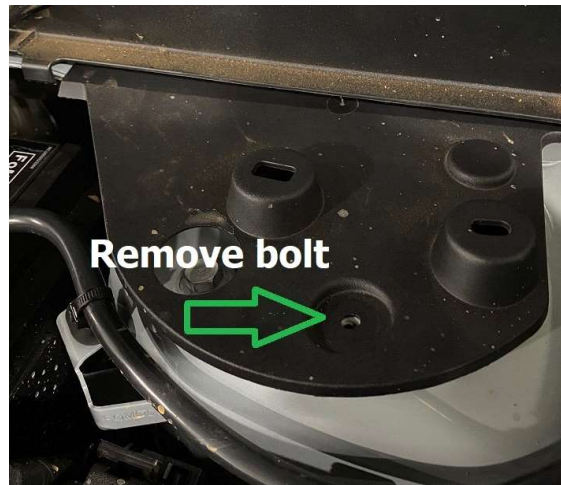
Step 7. Carefully unclip harness from plastic cowl cover. (Hybrid only)



Step 8. Using a panel removal tool, pry up plastic cowl cover to gain access to bolts holding plastic cover over struts.



Step 9. Using a 10mm socket, remove plastic panel covering strut bolts.



Step 10. Using a 13mm socket, remove bolts connecting strut to strut tower.

Step 11. Remove strut. Save hardware for reinstallation.

Step 12. Remove ABS wiring from inner fender

Step 13. Disconnect ABS wire from wheel sensor.

Step 14. Install lift spacers onto strut using supplied M8x16 bolts as shown.



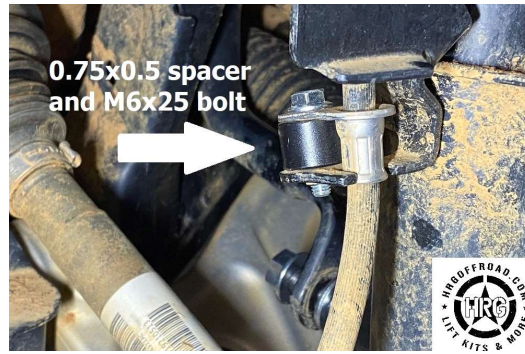
Step 15. Reinstall strut with spacer attached, using original hardware through the shock tower and into the spacer.



Step 16. Replace plastic shock tower cover.



Step 17. Place 0.5x0.75 spacer between brake line and brake line mounting bracket on the strut. Secure with supplied M6x25 bolt.



Step 18. Install lower bolt connecting strut to knuckle.

Step 19. Install offset camber adjustment bolt in place of upper strut bolt. (see separate instructions included with bolts.)



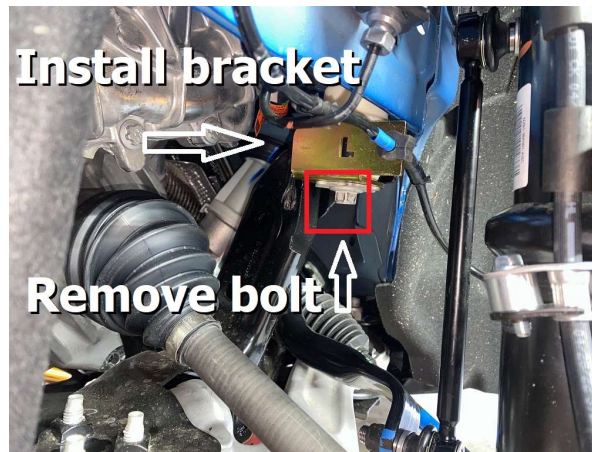
Step 20. Install supplied shorter sway bar end link.

Step 21. Disconnect ABS wire from wheel sensor.

Step 22. Unclip and route wire below brake line bracket and plug back into wheel sensor. (see photo)



Step 23. Remove bolt as shown in photo. Install ABS wire relocation bracket as shown, reinstall bolt. (see photo below)



Step 24. Repeat steps 3-23 for passenger side.

Step 25. Tighten all bolts.

### **Rear installation:**

Step 1. Lift vehicle and support with jack stands.

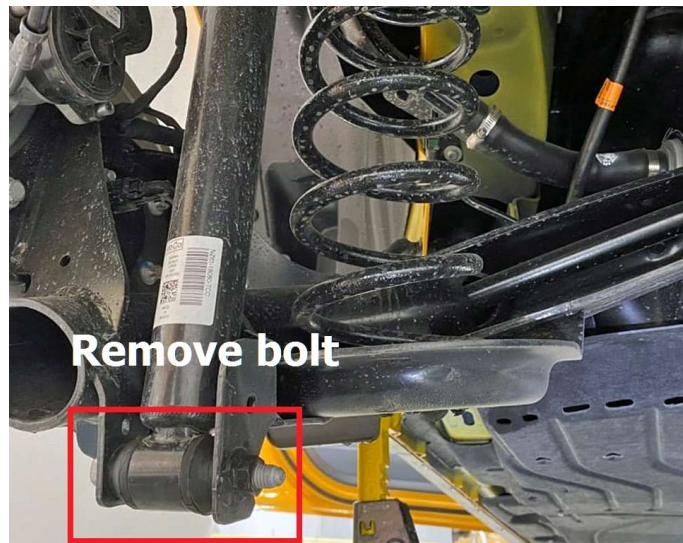
Step 2. Remove wheels.

Step 3. Support rear axle beam with floor jack or screw jack.

Step 4. Unclip brake line temporarily to allow sufficient slack in the brake line when axle drops.



Step 5. Using 15mm socket remove shock mounting bolt from BOTH driver side and passenger side.



Step 6. Using 18mm socket, loosen bolts holding swingarms to body, allowing axle to move freely.

Step 7. Carefully release spring tension by lowering jack or screw jack.



Step 8. Remove driver side spring and upper plastic isolator. (This will not be re-used, but can be saved if needed)



Step 9. Bolt spacer in place using M10 nut included with the kit (see photo)

Step 10. Reinstall original rubber isolator and spring.

**TIP: rotate spring to fit past the spacer, then rotate back into position.**



Step 11. Be 100% certain the spring is clocked properly into position (see photo)

**FAILURE TO PROPERLY INSTALL SPRING CAN RESULT IN SPRING BEING EJECTED!**



Step 12. Repeat steps 8-11 for passenger side.

Step 13. Using a jack, lift rear axle beam into position to line up bolts on rear shock absorbers.

Step 14. With weight on the rear suspension, tighten swingarm bolts.

Step 15. Reinstall bolts holding shocks to axle beam.

Step 16. Reinstall clips holding rear brake lines.

Step 17. Reinstall wheels and lower vehicle.

Step 18. Get a professional 4 wheel alignment.



**Note: Installing a lift kit will change the suspension geometry and will require a 4 wheel alignment.**

**Warning: Failure to follow the procedures in these installation instructions may result in unsafe handling characteristics, damage to vehicle, or loss of control.**

**For tech support, please call 1-844- HRG LIFT (474-5438) from 8-4:30 PM EST Mon-Thu 8-3:30 PM Fri or email us 24/7 at [support@hrgoffroad.com](mailto:support@hrgoffroad.com).**

***This product is intended for off-road use only!!***

Copyright HRG Offroad. 2023

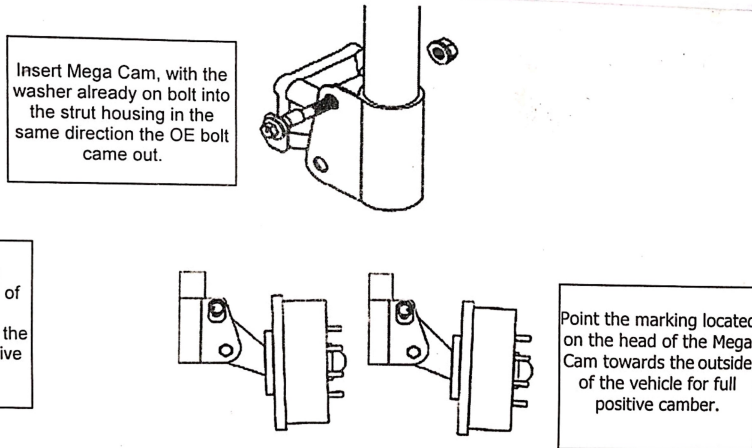
**Camber bolt instructions**



**WARNING: THE NUTS ON THESE BOLTS HAVE A SELF-LOCKING FEATURE. THE NUT WILL STOP TURNING ONCE YOU REACH THIS POINT AND YOU CAN NO LONGER TURN IT BY HAND. YOU MUST USE A TORQUE WRENCH TO TIGHTEN THEM TO THE SPECIFICATIONS LISTED BELOW. ONCE TORQUED, THE NUT WILL LOCK ONTO THE BOLT.**

**For camber changes greater than 1 degree, it will be necessary to install camber bolts in upper and lower bolt locations in the strut flange.**

1. Check and document initial alignment readings
2. Raise vehicle and remove tire/wheel assembly
3. Remove upper strut bolt (do not loosen lower strut bolt)
4. Install slotted washer on bolt.
5. Insert camber bolt with washer through the strut/spindle assembly in the same direction the OEM bolt came out. Snug lock nut but do not tighten
6. Loosen lower strut bolt. On models with splined spindle bolt, drive bolt out until splines are free from flange.
7. Reinstall tire/wheel assembly and alignment equipment or simply use Camber Kwik gauge. Rotate camber bolt until desired camber is achieved.
8. Tighten all bolts and torque but DO NOT EXCEED TORQUE SPECIFICATIONS.
9. Proceed with rest of alignment and road test vehicle.



Part #	Max. Torque	
1001	60 ft. lbs.	12mm Ultra Cam
1002	100 ft. lbs.	14mm Ultra Cam
1003	100 ft. lbs.	15mm Ultra Cam
1004	150 ft. lbs.	16mm Ultra Cam
1005	150 ft. lbs.	17mm Ultra Cam

**Limited Warranty**

Subject to Disclaimer. All Revotechnica products are warranted against defects in materials and workmanship for ninety (90) days from date of purchase. During the warranty period, Revotechnica will repair, or at its option replace at no charge, components that prove to be defective. The product must be returned, shipping prepaid, to Revotechnica facility. This limited warranty does not apply if the product is damaged by accident or misuse. The foregoing warranty is in lieu of all other warranties expressed or implied including but not limited to any implied warranty of merchantability, fitness, or adequacy for any particular purpose or use. Revotechnica shall not be liable for any special, incidental or consequential damages whether in contract, tort, or otherwise resulting from the use of or the inability to use the product.

**WARRANTY DISCLAIMER**

Use of this product in competition, or use on vehicles altered from original manufacturer's specifications or settings.. EXPRESSLY VOIDS WARRANTY. The user is urged to inspect for suspension binding or interference when the product is used in these manners. However, due to the varying conditions and manner of use which the product will be subjected to in such uses, Revotechnica makes no warranties, either express or implied, including any warranty of merchantability or fitness for a particular purpose for use in competition or with specifications or setting other than those specified by the original manufacturer's specifications.

## Checklist:

- \_\_\_ BS2122F-1.5 (2) 5-a
- \_\_\_ MAV2WD2223R-1.0 (2) 5-d
- \_\_\_ BS2122 SBEL (2) 5-e
- \_\_\_ BS2122 BLS (1 pack of 2) 2-j
- \_\_\_ BS2122 ABS bracket (1 L and 1 R) 2-o
- \_\_\_ CAMBOLT - 14 1-d
- \_\_\_ sticker