



PILOT

2009-2015 1 inch subframe kit installation guide

Professional installation is recommended

IMPORTANT!

Lifting and modifying the suspension on your vehicle may result in drive line vibrations, damaged bushings, erratic handling characteristics, and shortened suspension component life. HRG Offroad recommends the following:

- Checking and/or replacing worn drive axles with new parts, not remanufactured.
- Checking and/or replacing all worn factory rubber bushings with urethane bushings, such as Prothane.
- Checking and/or replacing worn shock absorbers and bump stops.
- Performing a 4 wheel alignment after working on suspension components.

Lift kits may not be legal for use on public highways in your area. Please check local laws before installing!!

WARNING!

Lifted vehicles are more prone to rolling over.

Some HRG Offroad products are designed to improve off-road capabilities. Modifying the suspension of your vehicle may result in handling characteristics that are different from a factory equipped vehicle. Extreme care must be used to prevent a rollover or loss of control. Always operate your modified vehicle at a reduced speed to ensure your ability to maintain control under all driving conditions. Driving your vehicle in an unsafe manner may result in serious injury or death. HRG Offroad lift kits are designed and tested to work together. HRG Offroad does not recommend combining this lift kit with any other type of suspension or body lift. Always wear your seat belt.

Included in the kit:

- 4 2.75x1" M14 spacers (front subframe)
- 4 3.5x1" "RSS" spacers (rear subframe)
- 4 1.25x1" M14 spacers (rear trailing arms)
- 6 1.25x1" M12 spacers (front subframe stiffener brackets)
- 2 1x1" M10 spacers (passenger side engine mount)
- 2 1x1" M10 spacers (center driveshaft carrier bearing)
- 2 .75x1" M8 spacers (driveshaft safety loop)

- 2 M8x40mm bolts (driveshaft safety loop)
- 1 .75x1 M8 spacer (parking brake cable)
- 1 M8x40 bolt (parking brake cable)
- 4 M14x135mm bolts (rear subframe)
- 4 M14x135mm bolts (front subframe)
- 4 M14x90mm bolts (rear trailing arms)
- 2 M10x50mm bolts (center driveshaft carrier bearing)
- 2 M10x70mm bolts (passenger side engine mount)
- 6 M12x50mm bolts (front subframe stiffener brackets)
- 1 1" foam seal (steering coupler)

Installation time: Approximately 4-5 hours.

Skill level: Moderate (minor cutting, no welding)

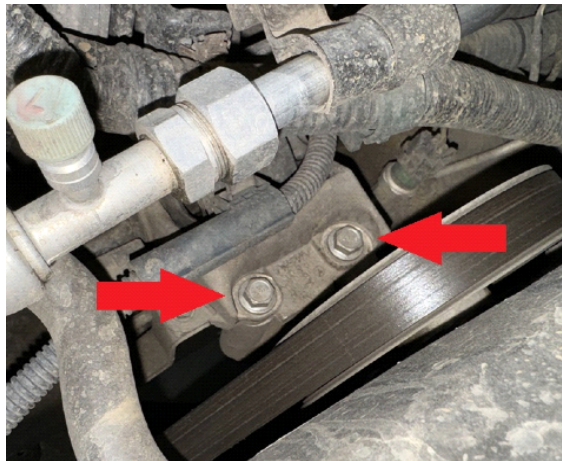
Tools required:

Jack, lug wrench, jack stands, impact wrench, socket extension, 12, 14, 17, 18 and 21mm sockets, 14 and 18mm wrenches, heavy hammer, pry bar, torque wrench, paint pen.

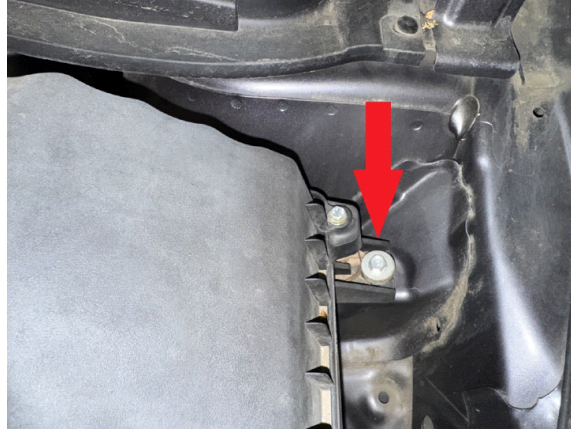
Front installation:

Step 1. Disconnect negative battery terminal.

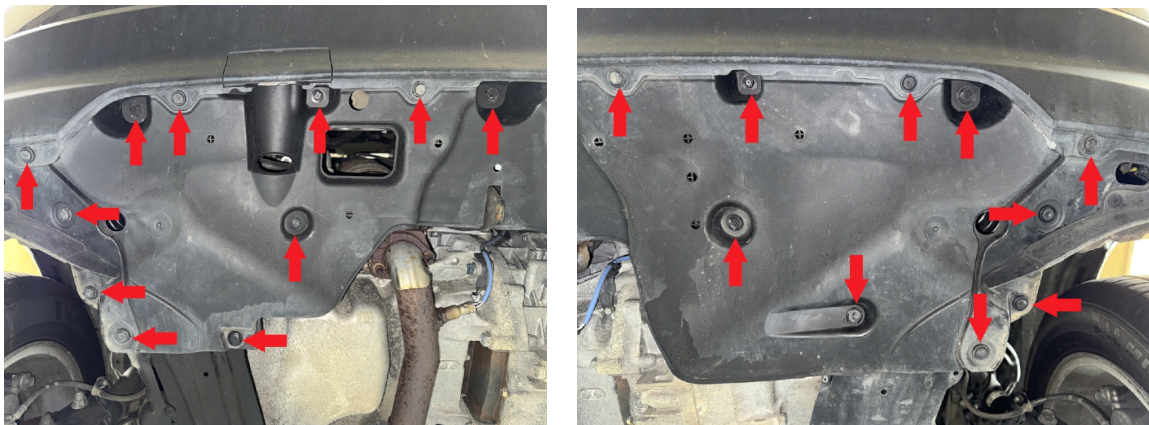
Step 2. Remove 2 M10 bolts holding engine dampener to engine block.



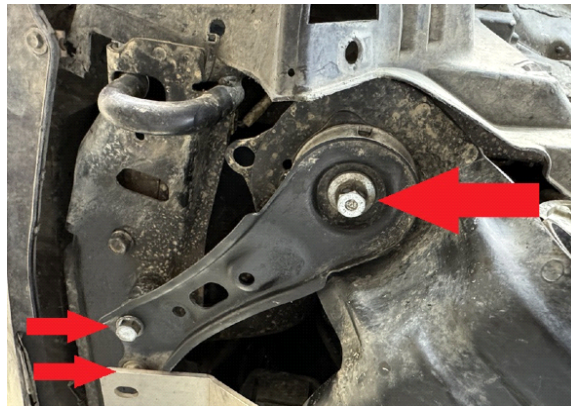
Step 3. Remove bolt holding air box as shown:



Step 4. Remove lower plastic splash guard under front valence to gain access to front main subframe bolts. Take care not to break plastic retainer clips. Save hardware.



Step 5. Remove 8 M12 bolts holding subframe stiffener brackets to body.



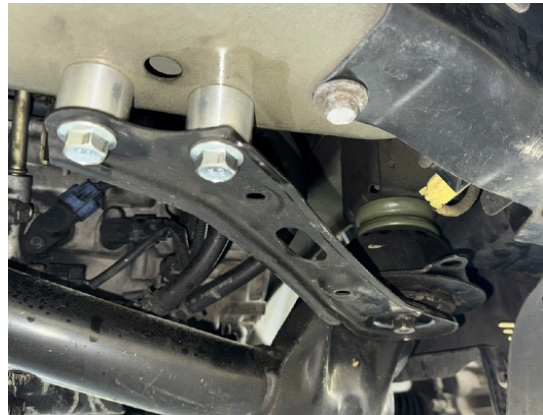
Step 6. Loosen but do not remove 4 M14 main subframe bolts allowing subframe to drop approximately one inch.



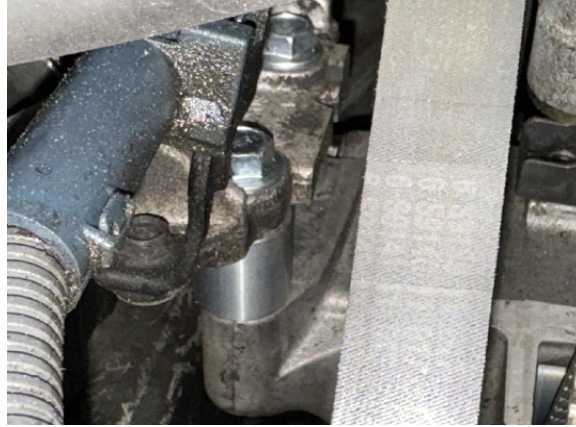
Carefully lower engine/subframe with floor jack, remove main subframe bolts one at a time and slip 2.75x1 M14 spacers between subframe and body. Installing the spacers one at a time keeps the subframe secure and aligned during installation.



Step 7. Install 4 1.25x1 M12 spacers between subframe stiffener brackets and body using supplied M12x50 bolts.



Step 8. Lower vehicle back down and install 2 1x1 M10 spacers between engine mount and engine bracket, using supplied M10x70mm bolts.



Step 9. Trim plastic splash shield as necessary to fit with lowered subframe, reinstall using original hardware.

Step 10. Under driver dash, pull back carpet and remove plastic dust cover on steering column to gain access to steering coupler.

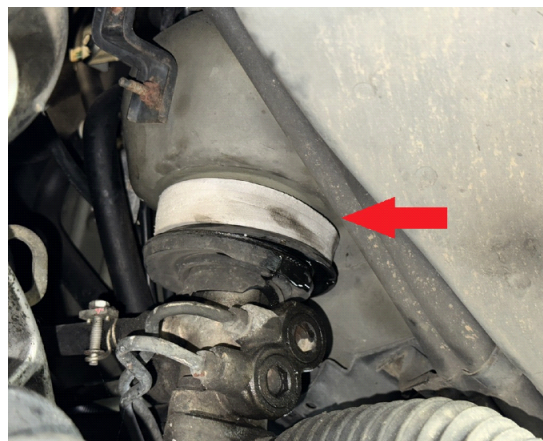
Step 11. Using a body saw, trim sheet metal as needed for clearance around steering coupler. This can also be done by simply bending the sheet metal back about 1/2 inch around the coupler. Turn steering wheel to verify the coupler has proper clearance.



TIP: If steering feels tight after installation, loosen (do not remove) and retighten bolts holding steering coupler to steering shaft. This will allow the column to self-adjust. (see photo)



Step 12. Install foam weather seal between steering rack and firewall. Seal in place with silicone caulking



Step 13. Re-install dust cover on steering column below interior dashboard.

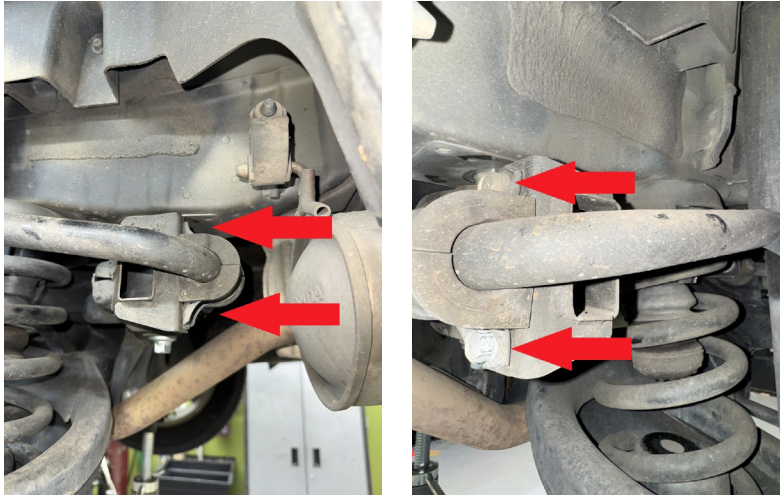
Step 15. Referring to factory service manual, torque all bolts to spec and mark with paint pen once completed.

Step 16. Reinstall wheels and lower vehicle.

Rear installation:

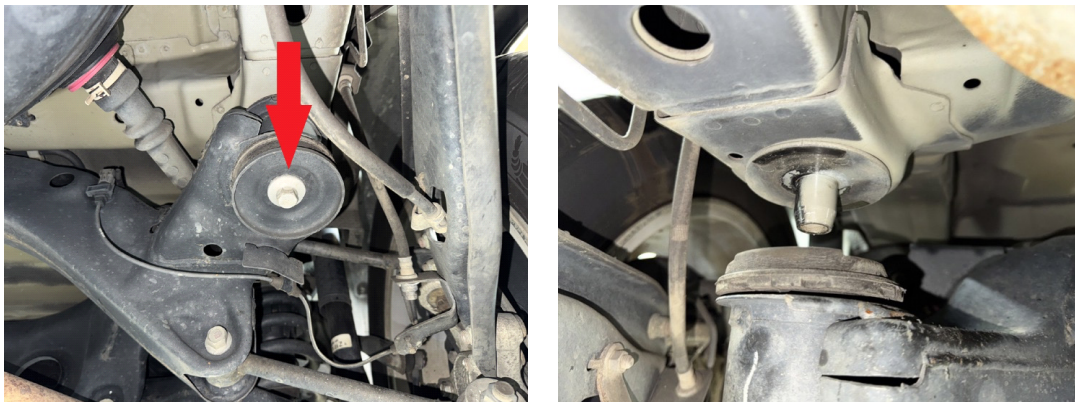
Step 1. Lift vehicle and support with jack stands.

Step 2. Remove 2 14mm bolts on both driver and passenger side holding sway bar to subframe. Save hardware.



Step 3. Install sway bar relocation brackets between sway bar mounting brackets and subframe.

Step 4. Support rear subframe with floor jack or screw jack. Loosen but **do not remove all** 4 main M14 bolts holding subframe to body, lower the subframe enough to remove one bolt and install one 3.5x1" spacer between subframe and body. These spacers will slide over the alignment pins on the frame.



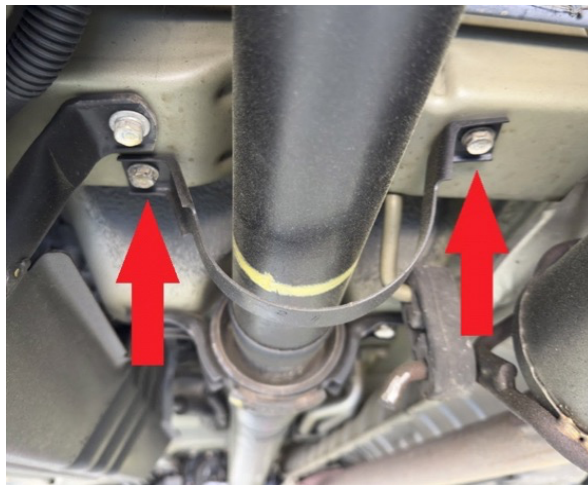
Step 5. Remove the remaining OEM rear subframe bolts one by one, installing remaining 3 spacers and replacing with M14x135 bolts as you go.



2WD MODELS SKIP TO STEP 7

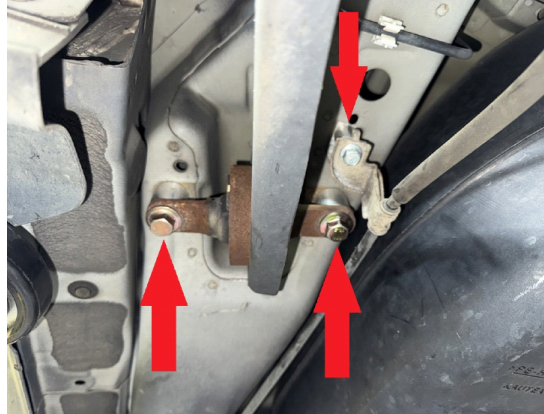
Step 6. Remove 14mm bolts holding carrier bearing to body. Install (2) 1x1" M10 spacers between carrier bearing and body and secure with M10x50 bolts.

Step 7. Remove M8 bolts from driveshaft safety loop, install (2) 0.75x1" M8 spacer and M8x40 bolts between loops and body.



Step 8. Remove one 19mm bolt from driver side rear trailing arm and temporarily replace with one of the M14x90 bolts included in the kit. Remove remaining OEM bolt and place 1 1.25x1 M14 spacer between trailing arm and body. Tighten bolt. Repeat process for other bolt, and then repeat entire process for passenger side. Take extreme care not to cross thread these bolts!

Step 9. Remove 12mm bolt holding parking brake cable on driver side and install 1 0.75x1 M8 spacer and secure with M8x40 bolt. (see photo)



Step 10. Double check all bolts!

Step 11. Get a professional alignment.

Note: Installing this kit will change the suspension geometry and will require a 4 wheel alignment, and possibly front/rear camber correction kits.

Warning: Failure to follow the procedures in these installation instructions may result in unsafe handling characteristics, damage to vehicle, or loss of control.

For tech support, please call 1-844- HRG LIFT (474-5438) from 8-4:30 PM EST Mon-Thu 8-3:30 PM Fri or email us 24/7 at support@hrgoffroad.com.

This product is intended for off-road use only!!

Copyright HRG Offroad 2025