



## 1997-2001 Honda CRV2WD/4WD 7mm subframe kit installation guide

*Professional installation is recommended*

*FOR OFF-ROAD USE ONLY!*

### **IMPORTANT!**

Lifting and modifying the suspension on your vehicle may result in drive line vibrations, damaged bushings, erratic handling characteristics, and shortened suspension component life. HRG Off-road recommends the following:

- Checking and/or replacing worn drive axles with new parts, not remanufactured.
- Checking and/or replacing all worn factory rubber bushings with urethane bushings, such as Prothane.
- Checking and/or replacing worn shock absorbers and bump stops.
- Performing a 4 wheel alignment after working on suspension components.

**Lift kits may not be legal for use on public highways in your area. Please check local laws before installing!!**

### **WARNING!**

***Lifted vehicles are more prone to rolling over.***

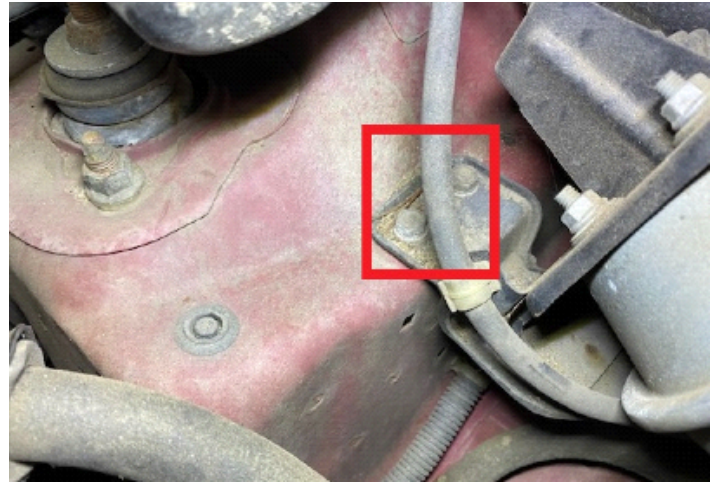
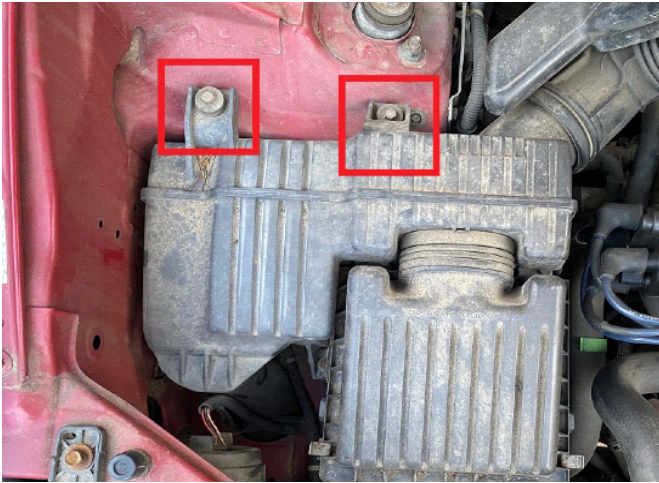
Some HRG Offroad products are designed to improve off-road capabilities. Modifying the suspension of your vehicle may result in handling characteristics that are different from a factory equipped vehicle. Extreme care must be used to prevent a rollover or loss of control. Always operate your modified vehicle at a reduced speed to ensure your ability to maintain control under all driving conditions. Driving your vehicle in an unsafe manner may result in serious injury or death. HRG Offroad lift kits are designed and tested to work together. HRG offroad does not recommend combining this lift kit with any other type of suspension or body lift. Always wear your seat belt.

### **Included in the kit:**

- 1 1.25 inch x7mm M12 spacer (manual transmission only)
- 4 1 inch x7mm spacers M10 (front torque mounts)
- 2 1.5 inch x7mm spacers M12 (transmission)
- 4 1.5inch x7mm M14 spacers (main subframe)
- 1 long "8" spacer (engine)
- 2 short "8" spacers (main subframe)

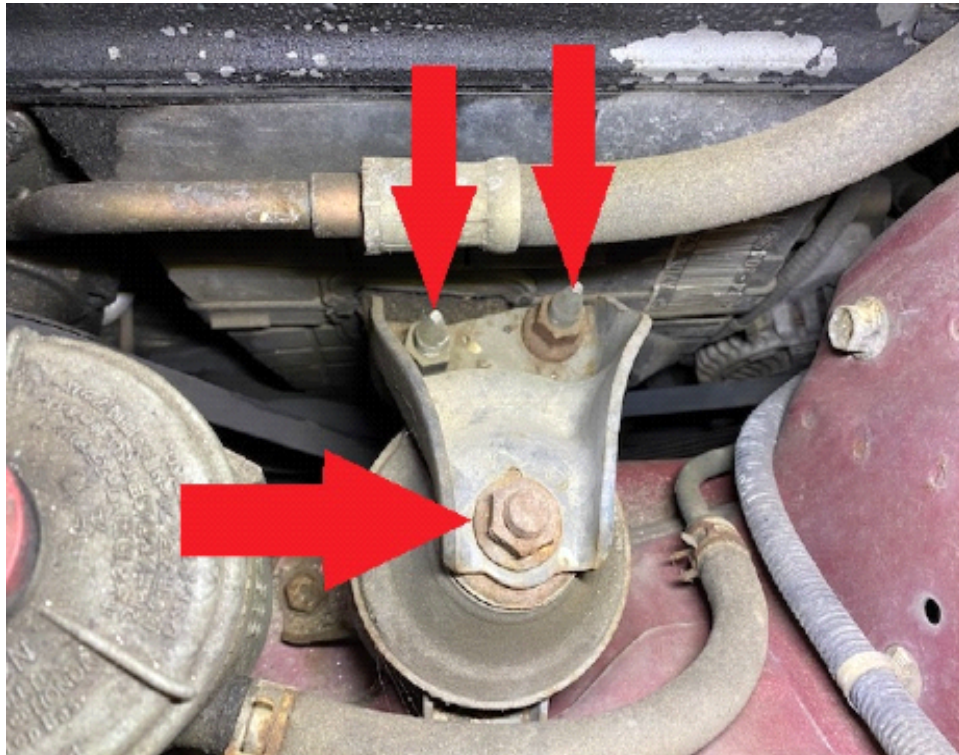
PLEASE NOTE: THIS KIT WILL ONLY COUNTERACT A VERY SLIGHT AXLE WOBBLE. IF YOU ARE EXPERIENCING SIGNIFICANT AXLE WOBBLE YOU WILL NEED A FULL 1 INCH SUBFRAME KIT.

Step 1. Remove factory air box and cruise control module. (if applicable)



Step 2. Support engine/transmission with a floor jack and a square of plywood.

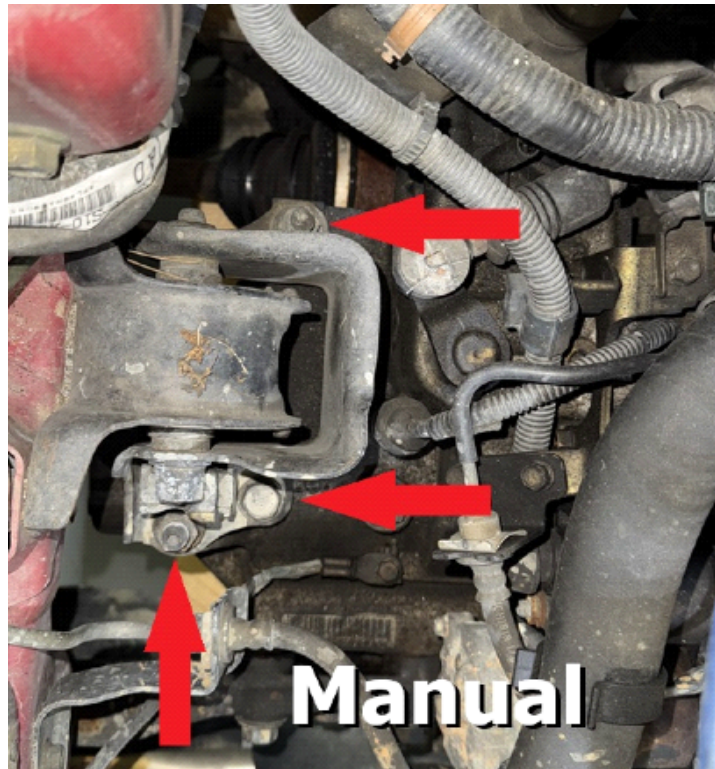
Step 3. Remove 3 17mm nuts, remove upper engine mounting bracket.



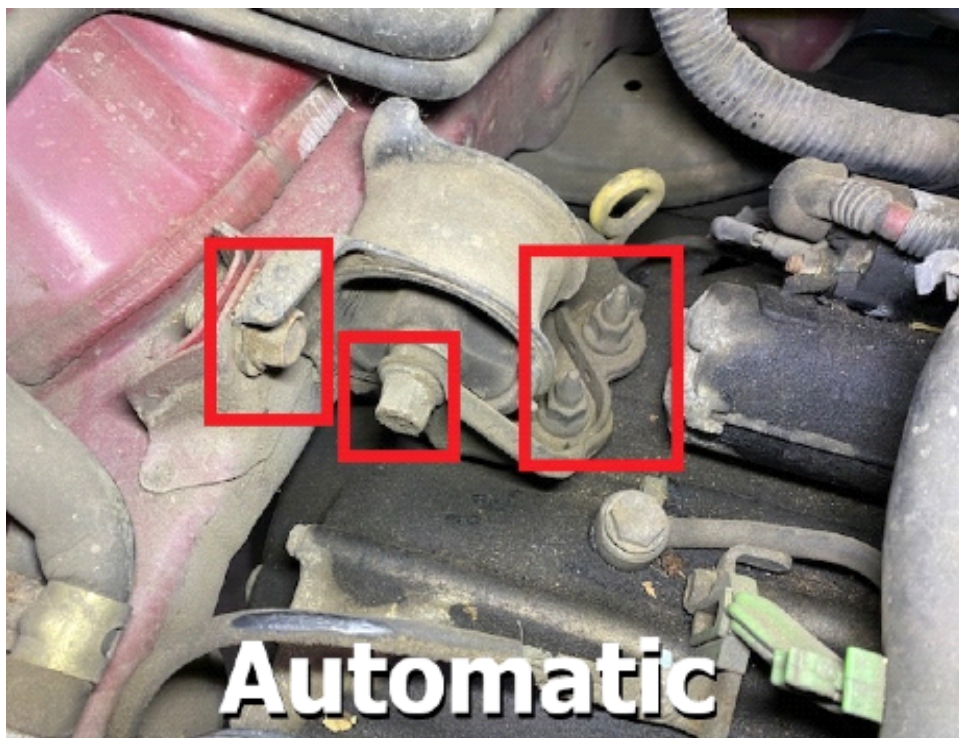
Step 4. Place long "8" spacer over studs. Reinstall upper engine mounting bracket. See diagram below.

Step 5a. (Manual transmission) Remove transmission mounting bracket. Do not remove transmission mount from frame rail.

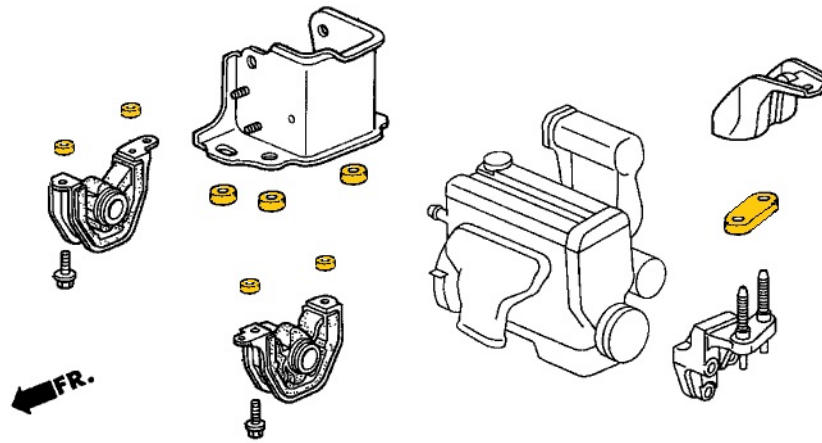




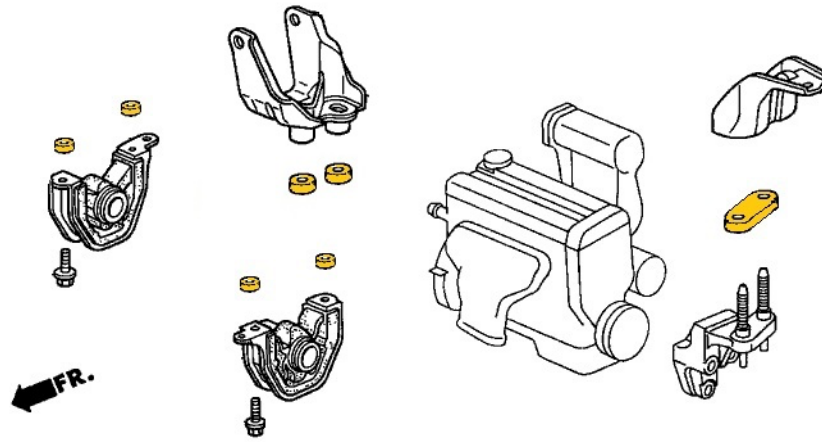
Step 5b. (Automatic transmission) Remove transmission mounting bracket AND transmission mount from frame rail.



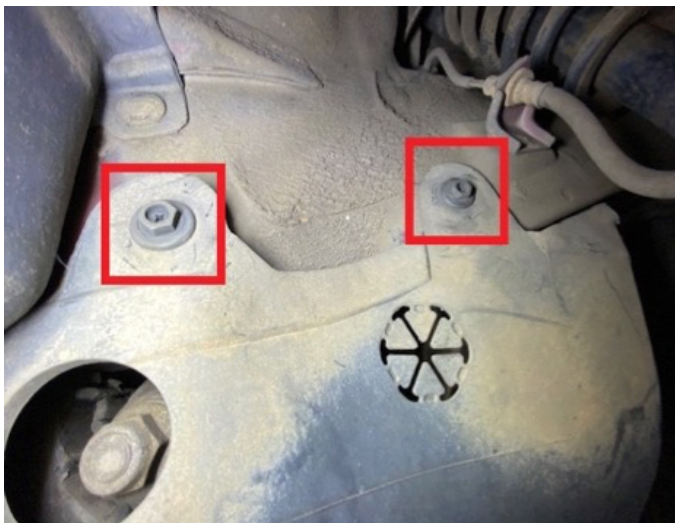
Step 6a. (Manual transmission) Place 2 1.5x7mm M14 spacer on studs. Place 1 1.25x7mm M12 spacer on bolt hole. Reinstall bracket, sandwiching the spacers between the transmission case and the bracket.



Step 6b. (Automatic transmission) Place 2 1.5 inch x 7mm M14 spacers on studs. Reinstall bracket, sandwiching the spacers between the transmission case and the bracket.



Step 7. Remove plastic splash shield from fender wells to gain access to the torque mounts (if applicable)



Step 8. Remove 2 14mm bolts holding torque mount to driver side lower frame rail.

Step 9. Place 1"x7mm M10 spacers between torque mounts and frame rail, reinstall original bolts. (see diagram above)

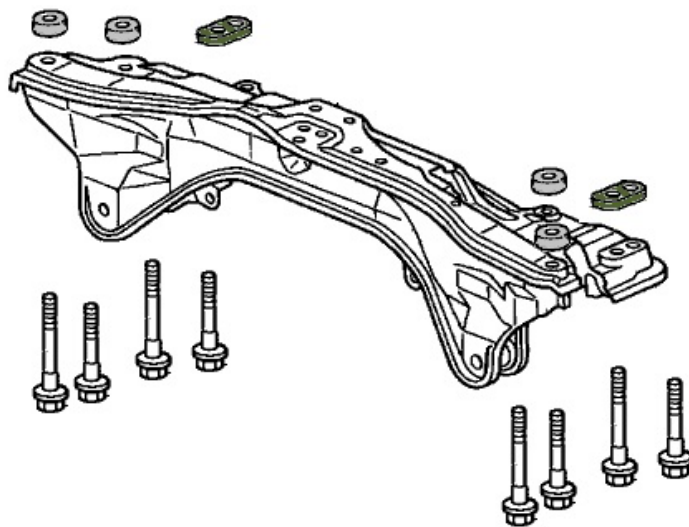


Step 10. Support subframe with floor jack or safety jack. Loosen subframe bolts to allow a ½ inch gap between the subframe and the body.



Step 11. Place “8” spacer between the subframe and body (see diagram below) and reinstall bolts as you go. Do not tighten bolts until all spacers are installed.

Step 12. Place 4 1.5 inch x 7mm spacers between subframe and body. (see diagram below) and reinstall bolts as you go. Tighten all subframe bolts to 150 ft-lb.



Step 13. Reinstall plastic splash shield.

Step 14. Reinstall air box.

Step 15. Reinstall cruise control module. (if applicable)

Step 16. Reinstall front wheels.

**Note: Installing sub frame spacers will change the suspension geometry and will require a 4 wheel alignment.**

**Warning: Failure to follow the procedures in these installation instructions may result in unsafe**

**handling characteristics, damage to vehicle, or loss of control.**

**For tech support, please call 1-844- HRG LIFT (474-5438) from 8-4:30 PM EST Mon-Thu 8-3:30 PM Fri or email us 24/7 at [support@hrgoffroad.com](mailto:support@hrgoffroad.com).**

***This product is intended for off-road use only!!***

Copyright HRG Offroad 2026