



## Rear hitch bumper installation guide

*Professional installation is recommended*

### Included in the kit:

- 1 rear hitch bumper
- 2 bumper mounts
- 1 bumper filler panel with license plate mount
- 1 3 inch LED flush mount floodlight (reverse light)
- 4 M10x35 bolts
- 4 M10x25 bolts
- 12 M10 nuts
- 1 M8x25 bolt
- 1 M8 nut
- 2 M6 stainless steel acorn nuts (license plate)
- 2 M4x30 screws (license plate light)
- 2 M4 nyloc nuts (license plate light)
- zip ties
- butt connectors (reverse light)

### Skill level: Easy

### Installation time: 1-2 hours

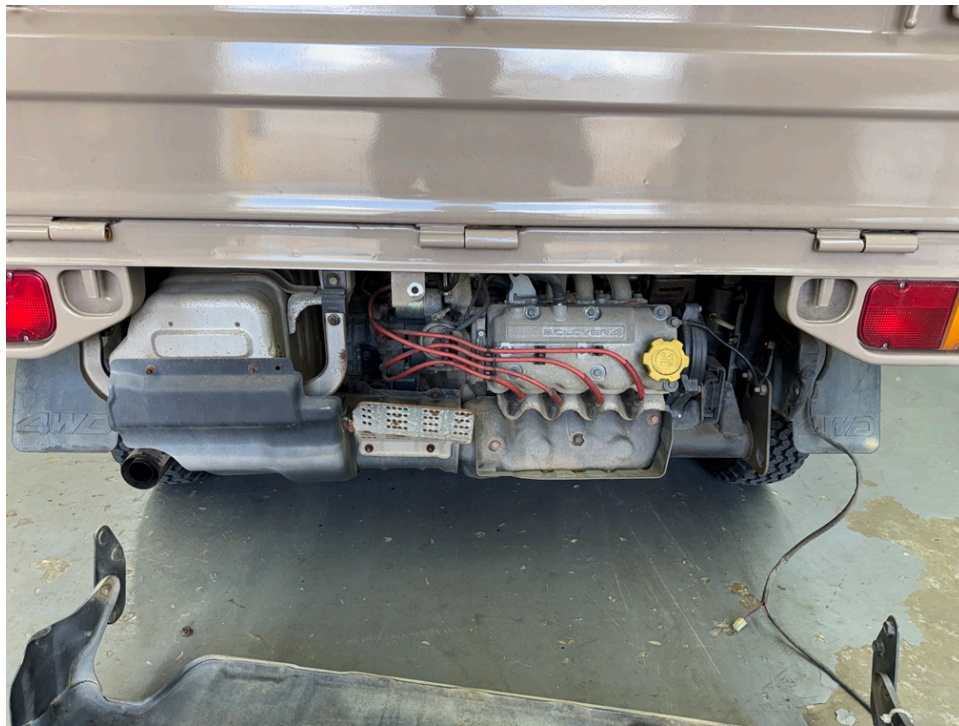
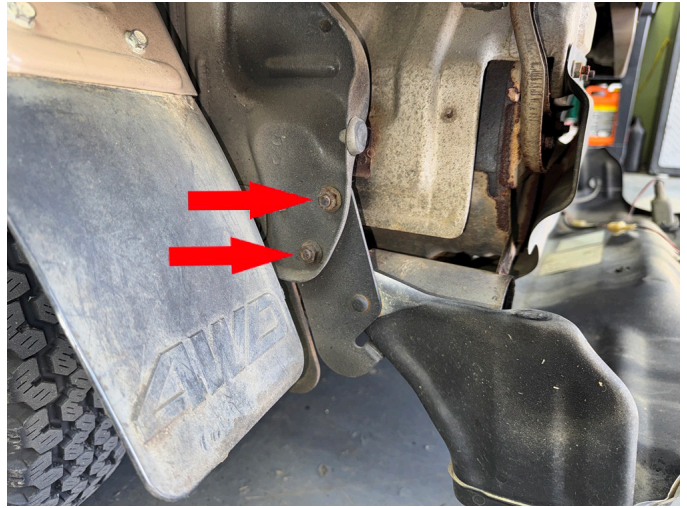
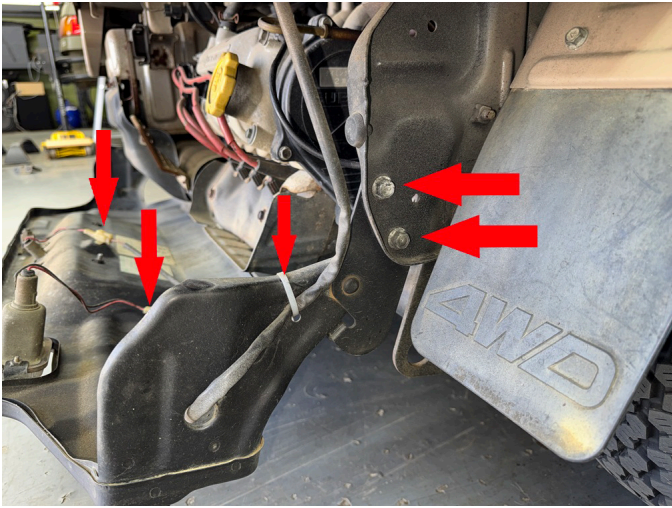
**Tools required:** Floor jack, impact gun, metric socket set to 14mm, philips head screwdriver, 5mm hex key, wire strippers, wire crimping tool, 14mm ratcheting wrench.

**Note to installer:** This bumper kit does not include trailer light connectors. Trailer wiring will have to be purchased and installed separately.

Step 1. Using the key, unlock and open the engine cover.

Step 2. Disconnect wiring to reverse and license plate lights. Remove license plate light.

Step 3. Remove bolts holding engine cover to frame.

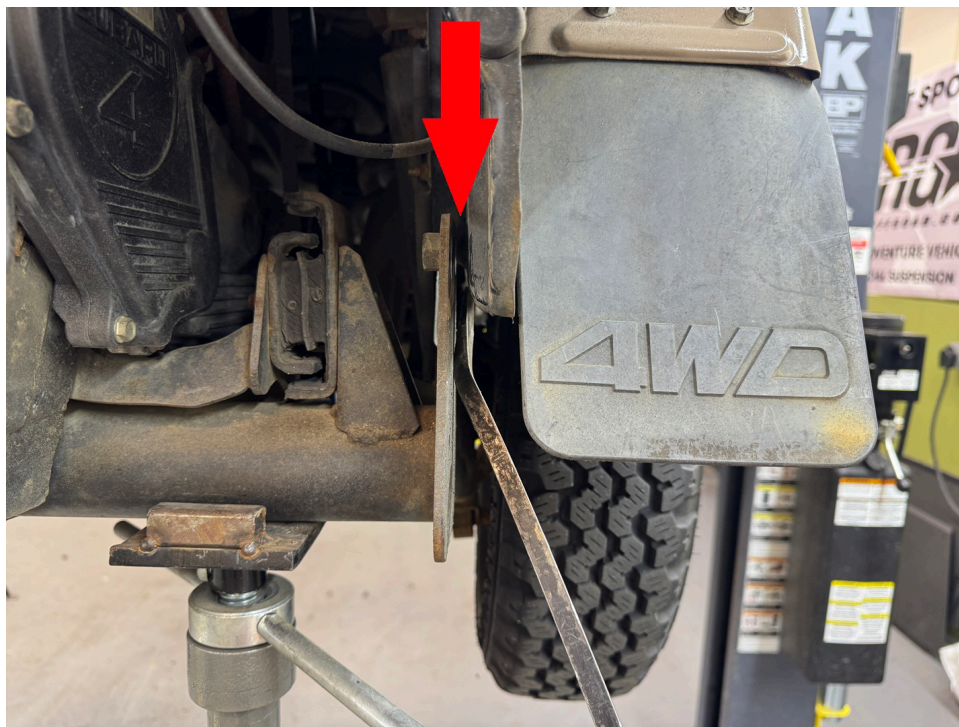


Step 4. Place jack under engine and lift up slightly.

Step 5. Remove bolts holding engine cradle to driver side (RH) frame.

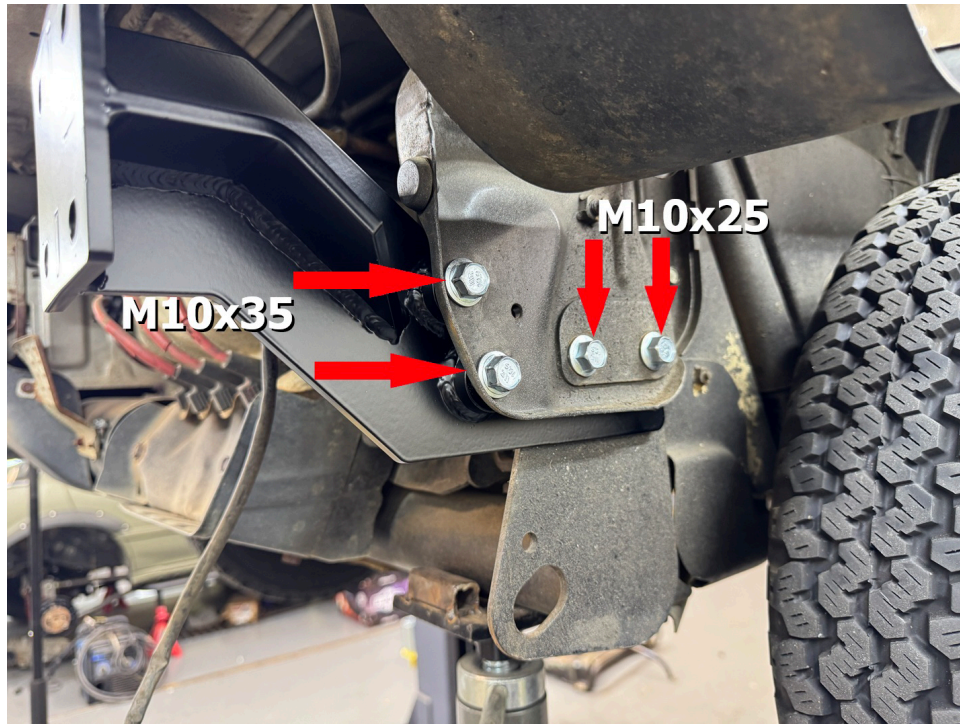


Step 6. Using a pry bar, open up the gap between the engine cradle bracket and frame as shown:

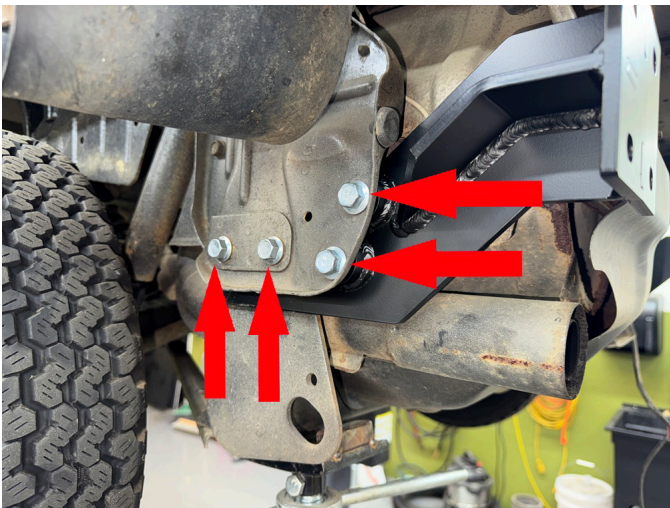
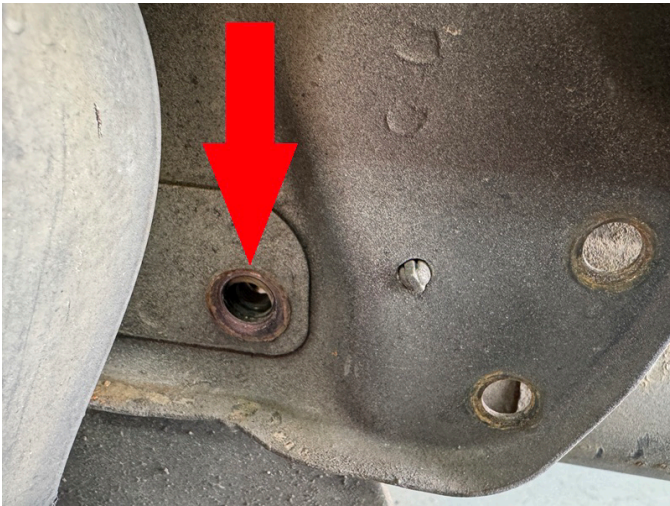


Step 7. Install driver side bumper mount as shown, using M10x25 bolts in place of the OEM engine cradle mounting bolts.

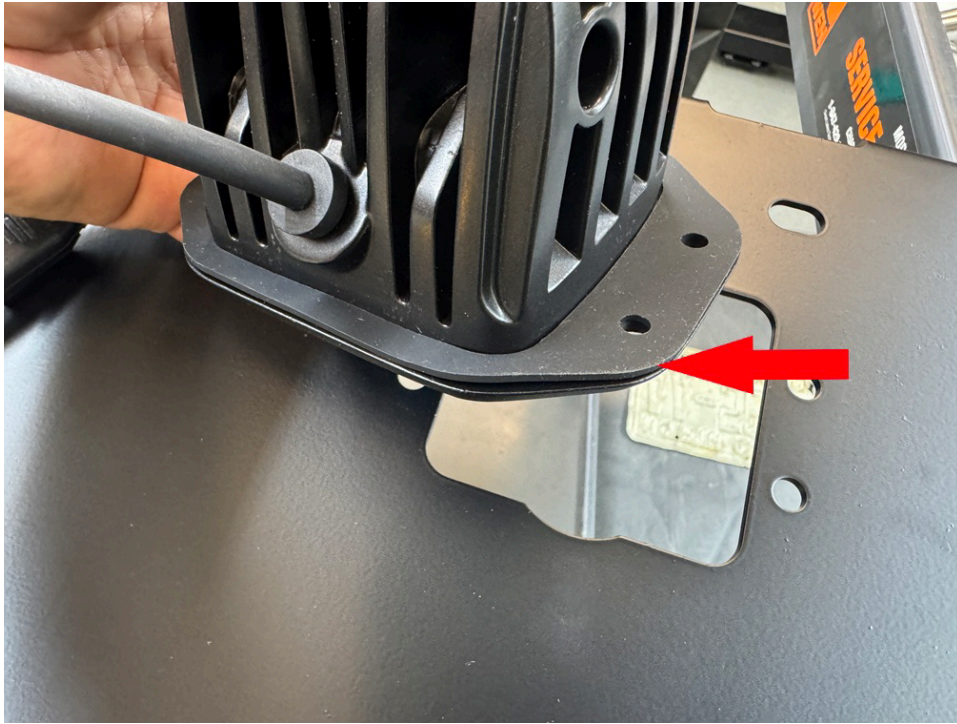
Step 8. Install M10x35 bolts in place of OEM engine cover bolts, secure with M10 nuts. Leave all hardware loose for now.



Step 9. Repeat process on passenger (LH) side. Leave all hardware loose for now.



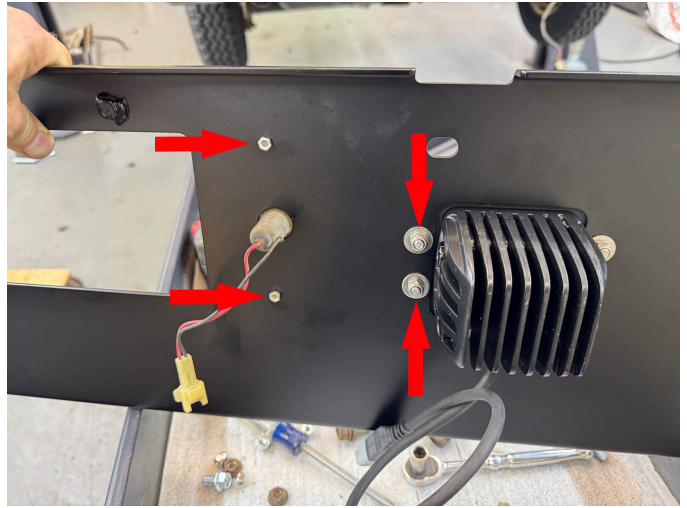
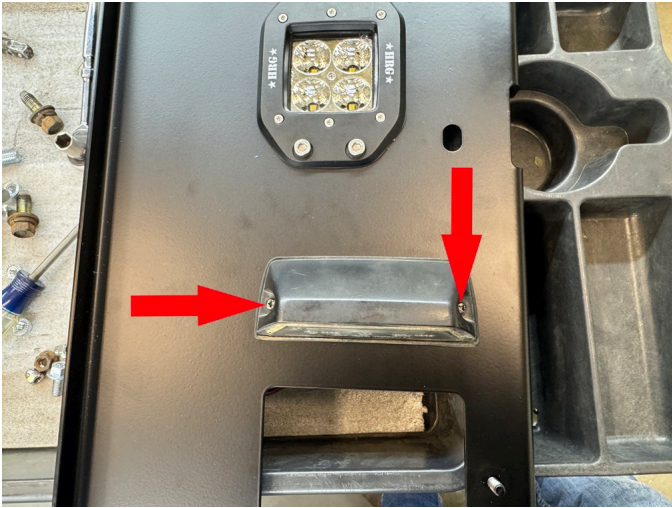
Step 10. Place rubber gasket on reverse light.



Step 11. Install reverse light as shown.



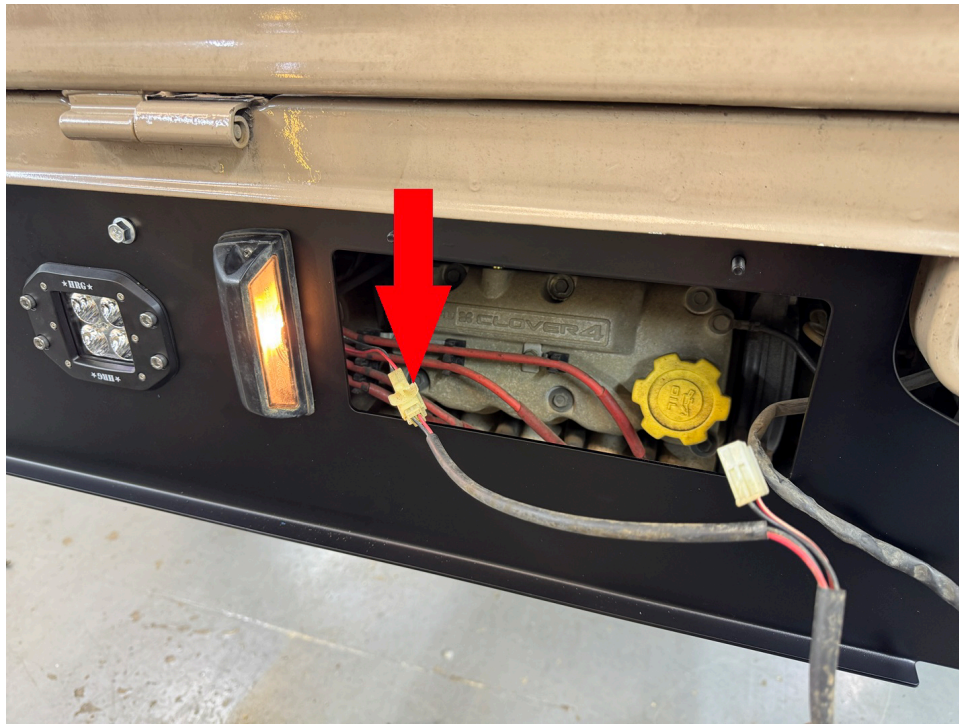
Step 12. Using hardware included in the kit, install OEM license plate light as shown.



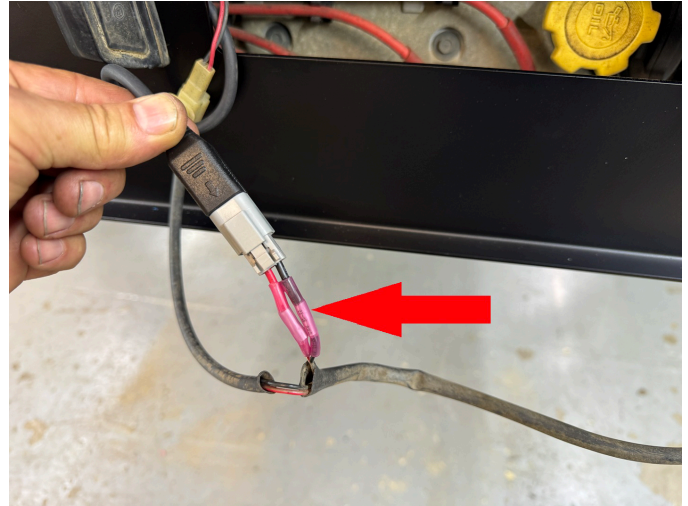
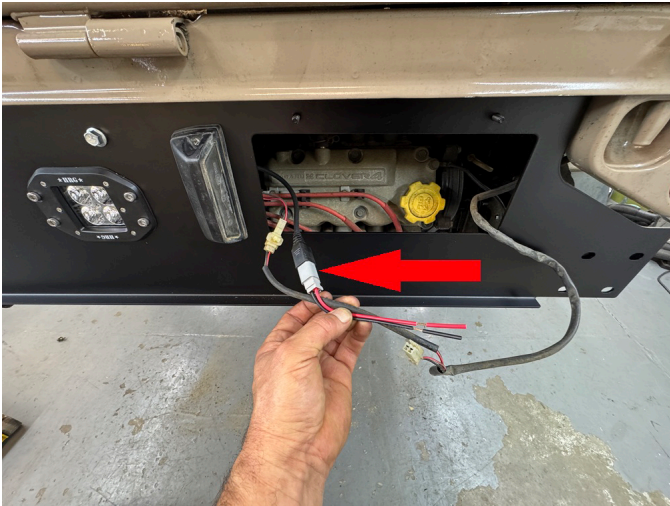
Step 13. Mount filler panel loosely with the M8x25 bolt and M8 nut as shown.



Step 14. Reconnect license plate light and confirm operation



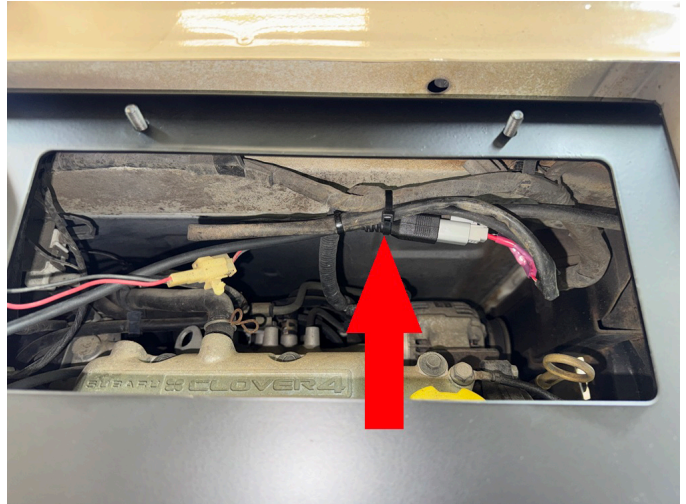
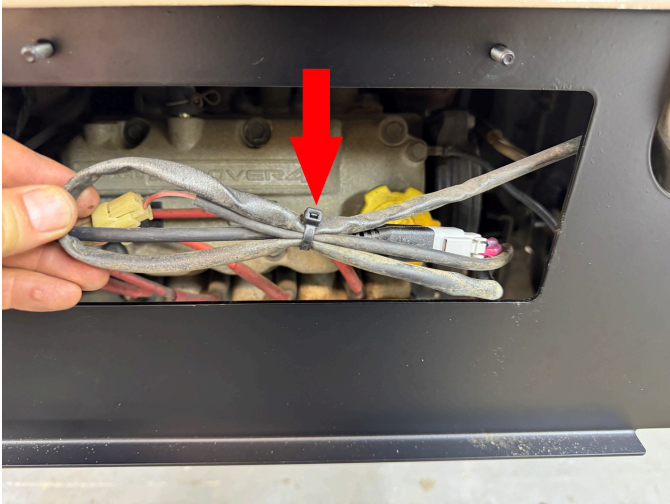
Step 15. Plug in pigtail harness to reverse light and connect wires to existing reverse light wiring as shown.



Step 16. Confirm reverse light operation.



Step 17. Zip tie the wiring into a bundle and then zip tie to the existing wiring harness as shown.



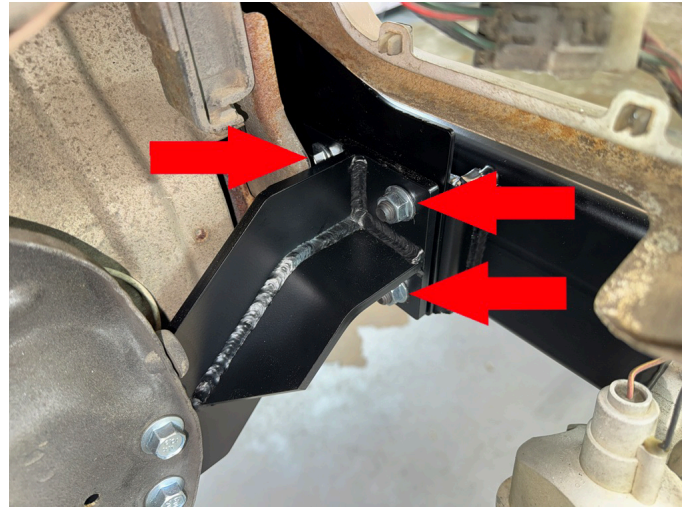
Step 18. Have a second person help you line up the bumper onto the mounts and secure the bumper in place with M10 nuts.



Step 19. Remove passenger (LH) side taillight to allow access to bumper mounting bolts.



Step 20. Using a 14mm ratcheting wrench, install remaining M10 nuts.



Step 21. Repeat process on driver (RH) side.

Step 22. Adjust bumper position as needed for best fit.

Step 23. Tighten ALL bolts at this time. Torque all M10 hardware to 40 ft-lb.

Step 24. Install license plate using m6 acorn nuts.

Step 25. Enjoy your new bumper!

**For tech support, please call 1-844- HRG LIFT (474-5438) from 8-4:30 PM EST  
Mon-Thu 8-3:30 PM Fri or email us 24/7 at [support@hrgoffroad.com](mailto:support@hrgoffroad.com).**