



2022+ Ford Maverick (ALL MODELS) Ditch Light Bracket Installation Guide
Professional installation recommended.

Included in the kit:

1 left and 1 right side ditch light bracket.

2 LED pod lights

1 wiring harness with relay and switch

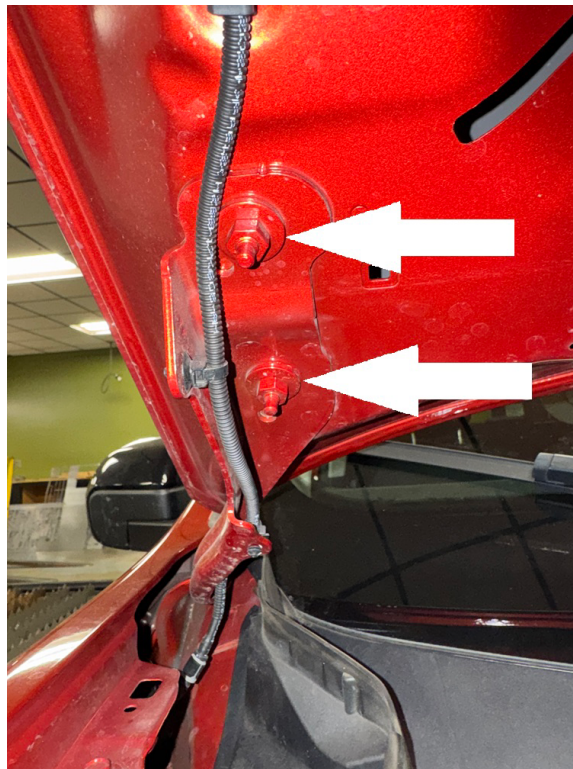
cable ties assortment

Approximate installation time: 1 hour

Tools required:

12mm and 13mm socket, 13mm wrench, dykes pliers, common pliers, 1/8" drill bit, 3/8" drill bit, 3/4" unibit, utility knife, wire fish tool (AKA 24 inch zip tie), electrical tape.

Step 1. Remove 2 nuts holding passenger's side hood hinge to hood.



Step 2. Place ditch light bracket over studs and reinstall OEM nuts.



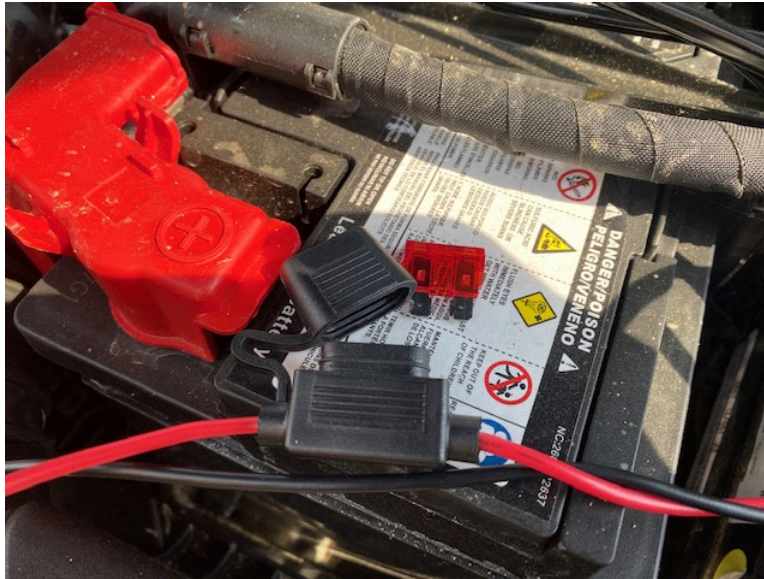
Step 3. Using paint shadow as a reference, align hood and tighten nuts.

Step 4. Using M8x16 bolt and nut, install pod lights provided with the kit.



Step 5. Repeat steps 1-4 for passenger side.

Step 6. Remove fuse from wiring harness.

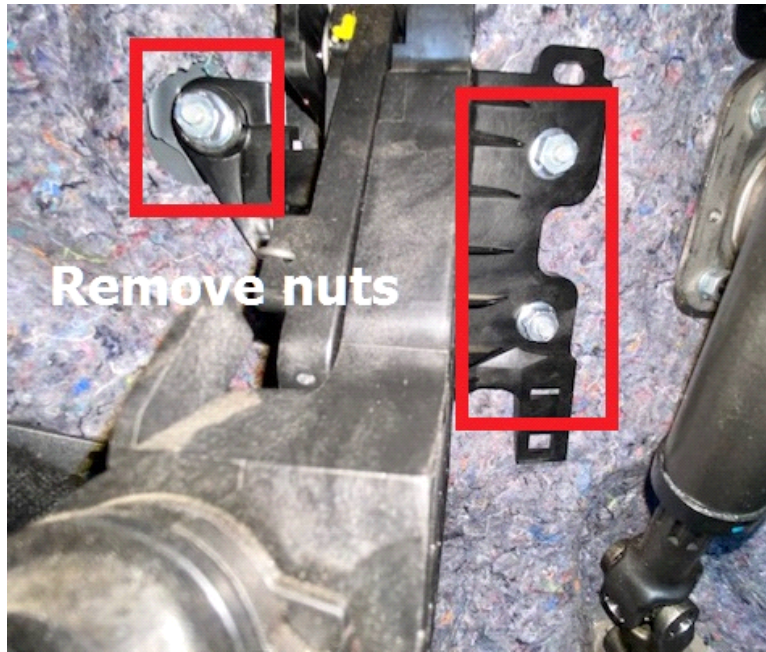


Step 7. Connect main power cable to positive battery stud.

Step 8. Connect main ground cable to chassis.



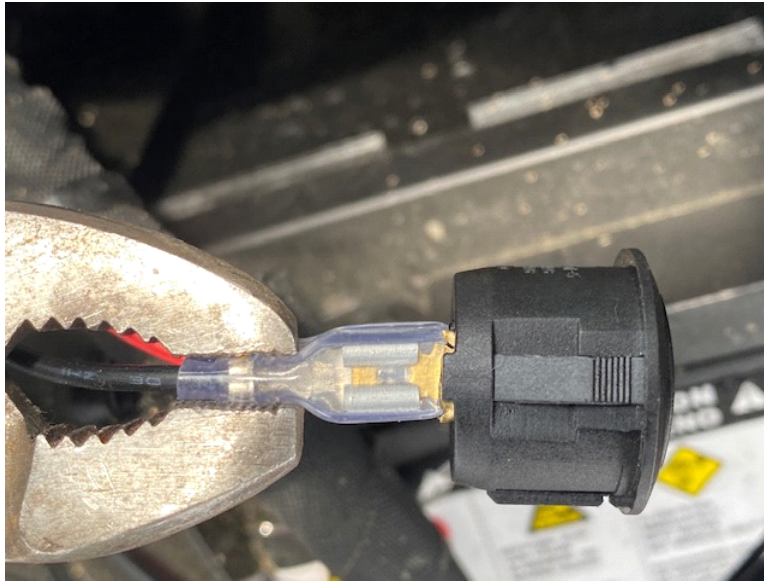
Step 9. Remove parking brake override housing from firewall.



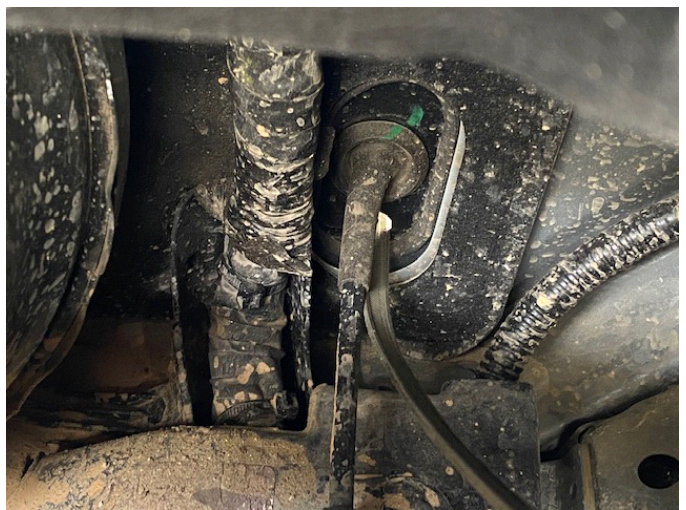
Step 10. Using a 3/8" bit, drill a hole in the plastic plug on the firewall.



Step 11. Using pliers, unplug wiring from switch as shown. DO NOT PULL ON WIRING.



Step 12. Using a wire fish tool, pull switch wiring through firewall.



Step 13. Replace nuts on parking brake override housing.

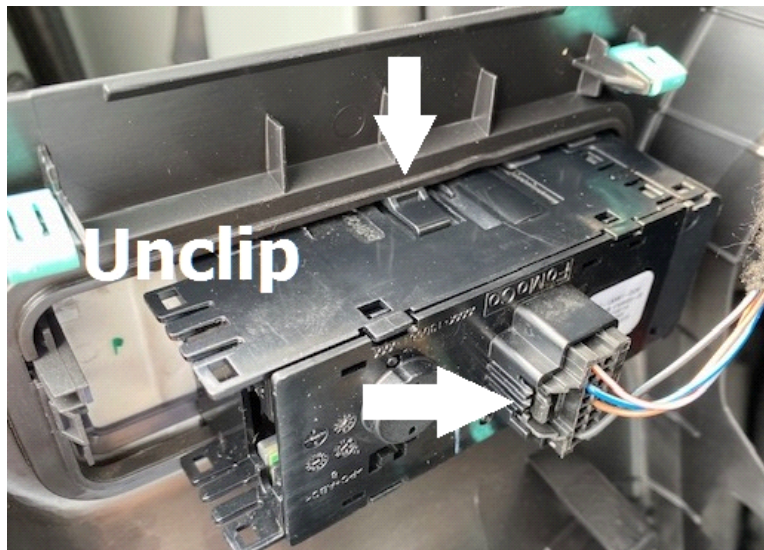
Step 14. Choose a suitable location to mount power switch. It can be mounted wherever you like. (We mounted ours to the light control panel)

Step 15. Pull off dashboard side panel next to door jamb.



Step 16. Pull off left side panel below steering wheel.

Step 17. Unclip wiring harness from headlight control panel, unclip from dash panel.



Step 18. Mark center of hole for power switch.



Step 19. Using a 1/8" bit, drill pilot hole.



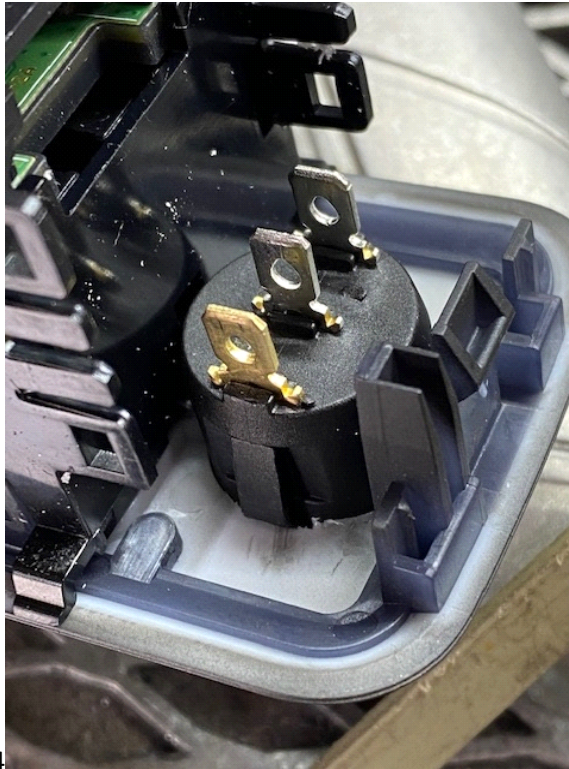
Step 20. Using a large unibit, drill hole out to 7/8" (Be careful not to go over)



Step 21. Using a utility knife, trim mounting switch as shown:



Step 22. Mount power switch.



4

Step 23. Re-install left side dash panel below steering wheel.

Step 24. Re-install dashboard side panel.

Step 25. Reconnect wiring to power switch, plug in headlight control harness, secure wiring with cable tie as shown:



Step 26. Secure wiring with cable ties as shown.



Step 27. Reinstall headlight control panel.



Step 28. Route wiring to lights as shown, secure with cable ties:





Step 29. Install fuse, test lights.



Step 30. Find some trails!!

**For tech support, please call 1-844- HRG LIFT (474-5438) from 8-4:30 PM EST
Mon-Thu 8-3:30 PM Fri or email us 24/7 at support@hrgoffroad.com.**

This product is intended for off-road use only!!

Copyright HRG Offroad 2026